

THIS DRAWING IS TO BE READ IN CONJUNCTION WITH SEPERATE GROUP / SITE SPECIFIC CONSTRUCTION NOTES AND MATERIALS SPECIFICATION.

### DRAWING NOTES

All tree and shrub locations and species must be taken into consideration by the project Structural Engineer to ensure that foundation design accords with the specifications set out in Chapter 4 of the NHBC Standards. The Landscape Contractor must ensure that plant material is planted in the locations shown and with NO SUBSTITUTIONS made without consulting the Group Landscape Design Department. It is the Landscape Contractor's responsibility to ensure that all underground services have been located and identified in advance of tree pit excavation so that no services are damaged or compromised by tree planting. Any changes to tree positions, species or specifications must be approved by the Group Landscape Design Department. Underground service strips are to be kept free of all plant material. Contractors must comply with all Health and Safety regulations and be aware of project/site specific information including referring to the information set out in the CDM drawings.

### CDM LEGEND

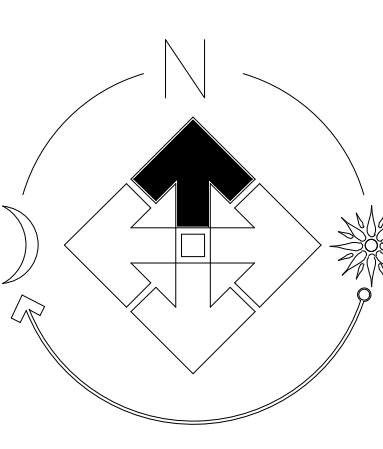
Symbol	Brief description of risk
	Severer assessment
	Overhead overhead services
	Trees have protection order in place, guarding required

NOTES:  
Principal contractor to ensure all health and safety procedures are being correctly followed in relation to all temporary works

### LEGEND

	EXISTING TREES/HEDGES With Root Protection Area To be retained
	PROPOSED TREES See Schedule
	SPECIMEN PLANTING See Schedule
	ORNAMENTAL HEDGE See Schedule
	NATIVE HEDGE See Schedule
	PROPOSED PLANTING See Schedule
	TURF With area (m <sup>2</sup> )
	GRAVEL To Regional Specification
	AMENITY GRASS AREAS Wear Tolerant Turfgrass Mixture Emergence 6000 sown at 4 g/m <sup>2</sup> Keep mown short to 40mm
	WILDOFLOWER MEADOW Special General Purpose Meadow Mixture Emergence 6000 sown at 4 g/m <sup>2</sup> Grass seed to be retained and managed where appropriate to support new sowing
	SEASONAL WETLANDS Meadow Mixture for Seasonally Wet soils Emergence 6000 sown at 4 g/m <sup>2</sup>
	EXISTING VEGETATION In association with existing ditch and boundary Where retention is required use with Meadow Mixture for Seasonally Wet soils Emergence 6000
	BULB PLANTING Bulbs scattered by hand and planted where they fall to create a natural look
	BOUNDARY MIX See Schedule
	SHRUB MIX See Schedule
	SENSORY MIX See Schedule
	ROOT BARRIER Between Development Tree Planting and Western Cycle Path To Engineers specification
	SEATS As Supplied by Broyou Ltd 2 Ashbourne Seat Ref: BS 720 Or similar approved

FOR BOUNDARY TREATMENTS INFORMATION SEE EXTERNAL WORKS DRAWING



### PLOT NUMBER SHEET REF.

SHEET 002: 1-19, 24-34, 117-127, 162-165  
SHEET 003: 150-161, 166-230  
SHEET 004: 98-116, 128-149 +LAP  
SHEET 005: 20-23, 35-97

### PLAY AREA LEGEND

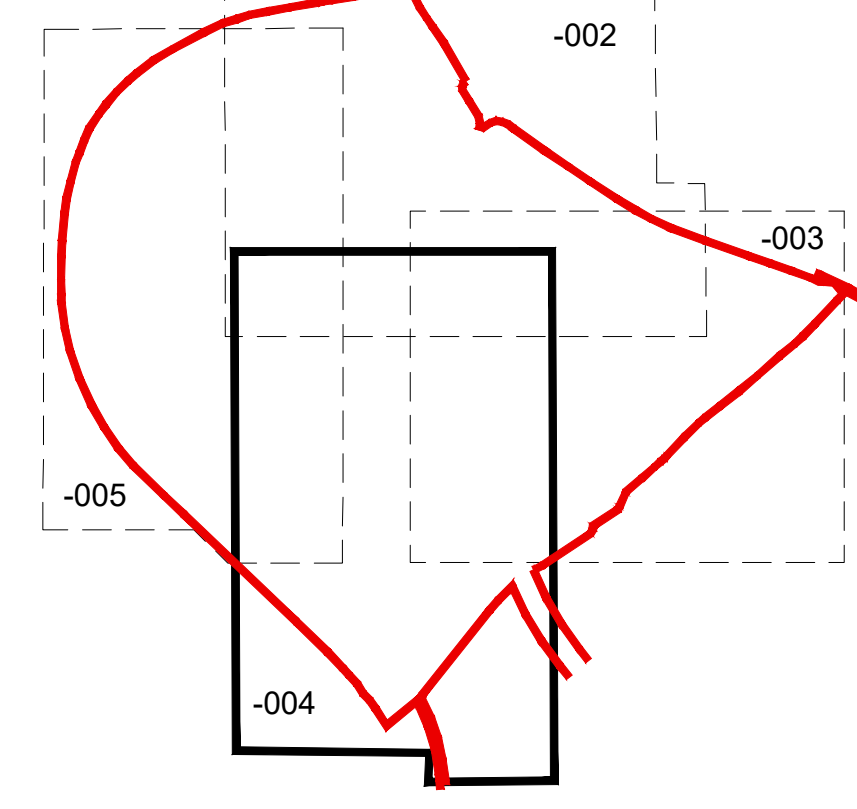
	1. OLIVIA TRAIN As Supplied by Mirica Design & Play Ref: SB001 Or similar approved
	2. RACHEL CARRIAGE As Supplied by Mirica Design & Play Ref: SB002 Or similar approved
	3. LIMA UNICORN SPRINGER As Supplied by Mirica Design & Play Ref: SB003 Or similar approved
	4. LITTER BINS As Supplied by Broyou Ltd 2 Ashbourne Seat Ref: BS 720-5 Or similar approved
	5. SEATS As Supplied by Broyou Ltd 2 Ashbourne Seat Ref: BS 720 Or similar approved
	SIGNAGE Ownership/Usage Exact Wording to be Agreed with the Local Planning Authority
	SELF-CLOSING GATES v1.1 1.2m High Double Pedestrian & Vehicle Gates As Supplied by Wickstead Playgrounds Ltd Ref: WICKGATES & WICKGATES T112 Or similar Approved
	GRASS MATTING As Supplied by Techno Ltd 1.5m x 1m Grass Mats Pegged into Place & Tied Together with Cable Ties Or similar Approved

LAP INSTALLATION NOTES  
Play provision should be in accordance with the layout proposed. Individual elements within the layout are to be designed and implemented by a reputable natural play provision company registered and approved by ROPPA, CHAS or equivalent. All component materials and structures are to meet current safety standards and are to be subject to a suitable balanced risk assessment, guided by EN1176 and EN1177, at the design stage and at the pre and post installation stages. The play provider should also produce an ongoing maintenance plan for the play area. The play area is to be inspected and approved by a qualified play inspector prior to being opened for use.

Contractors must comply with all Health and Safety regulations and be aware of project/site specific information including referring to the information set out in the CDM drawings.

### SHEET LAYOUT LOCATION PLAN

NOT TO SCALE



### FOR SPECIFICATION, PLANTING DETAILS & SCHEDULE SEE DRAWING WE093-LS-006

Revision	Date
-	-