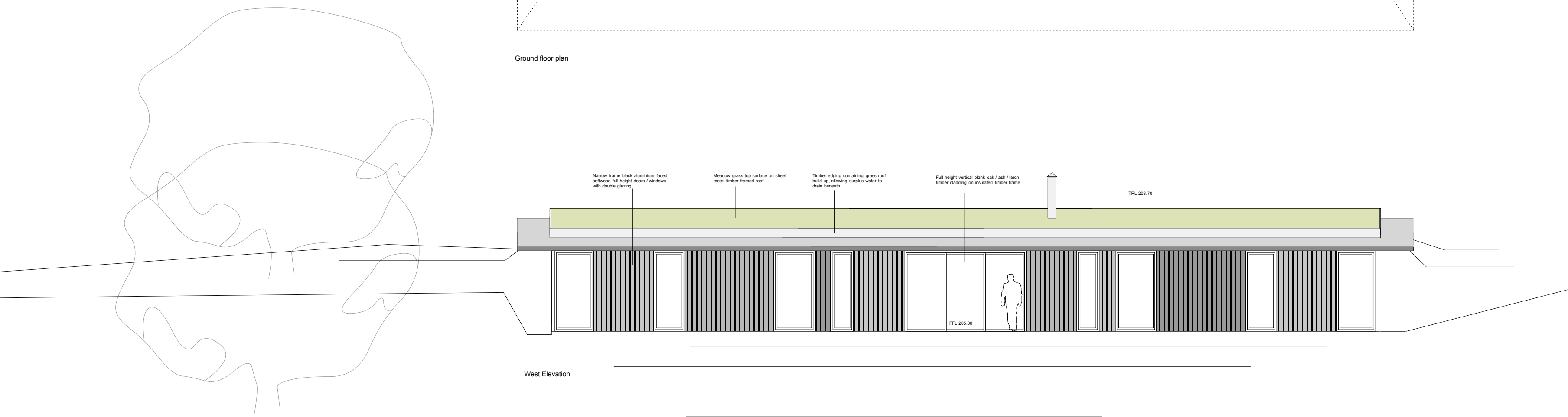
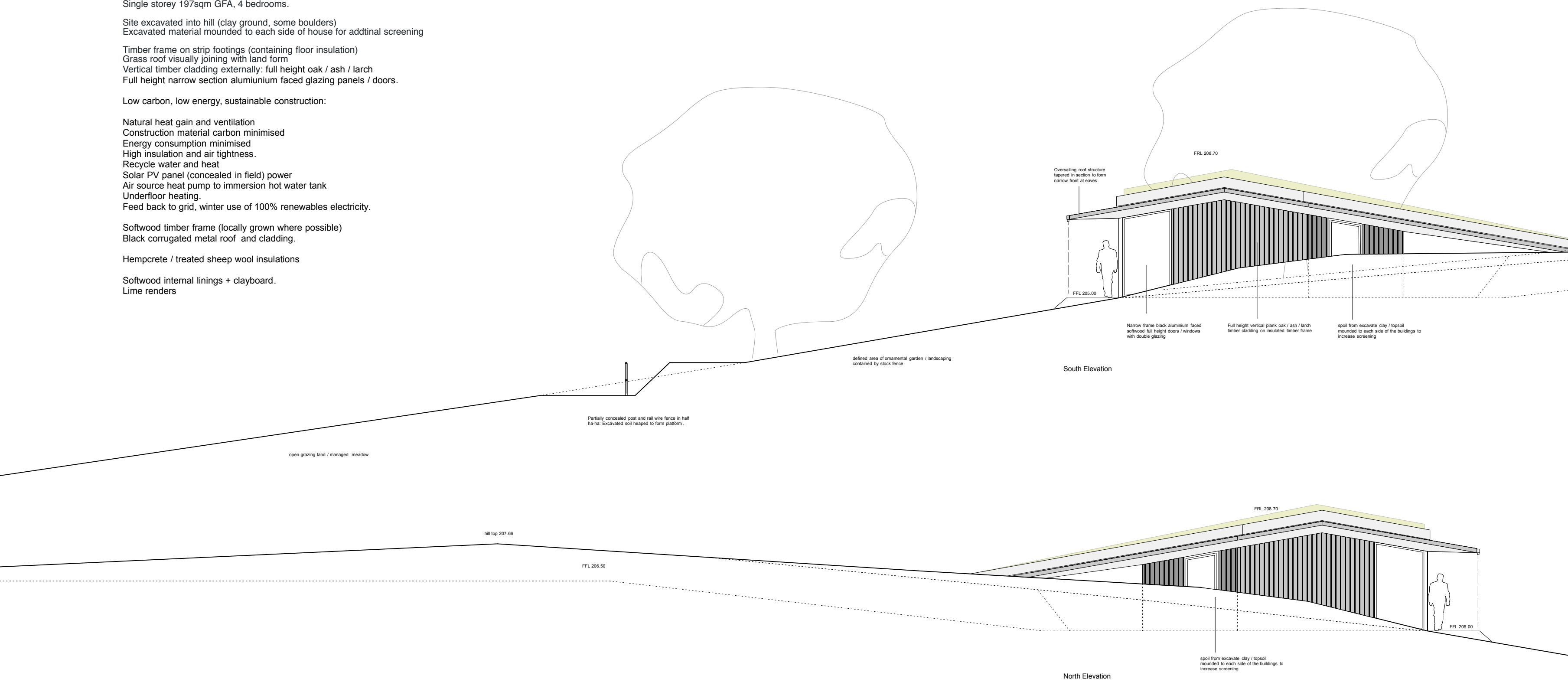


Ground floor plan

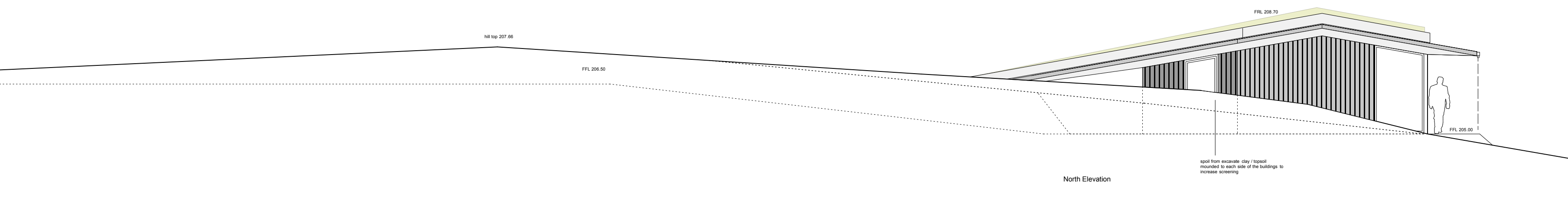


West Elevation

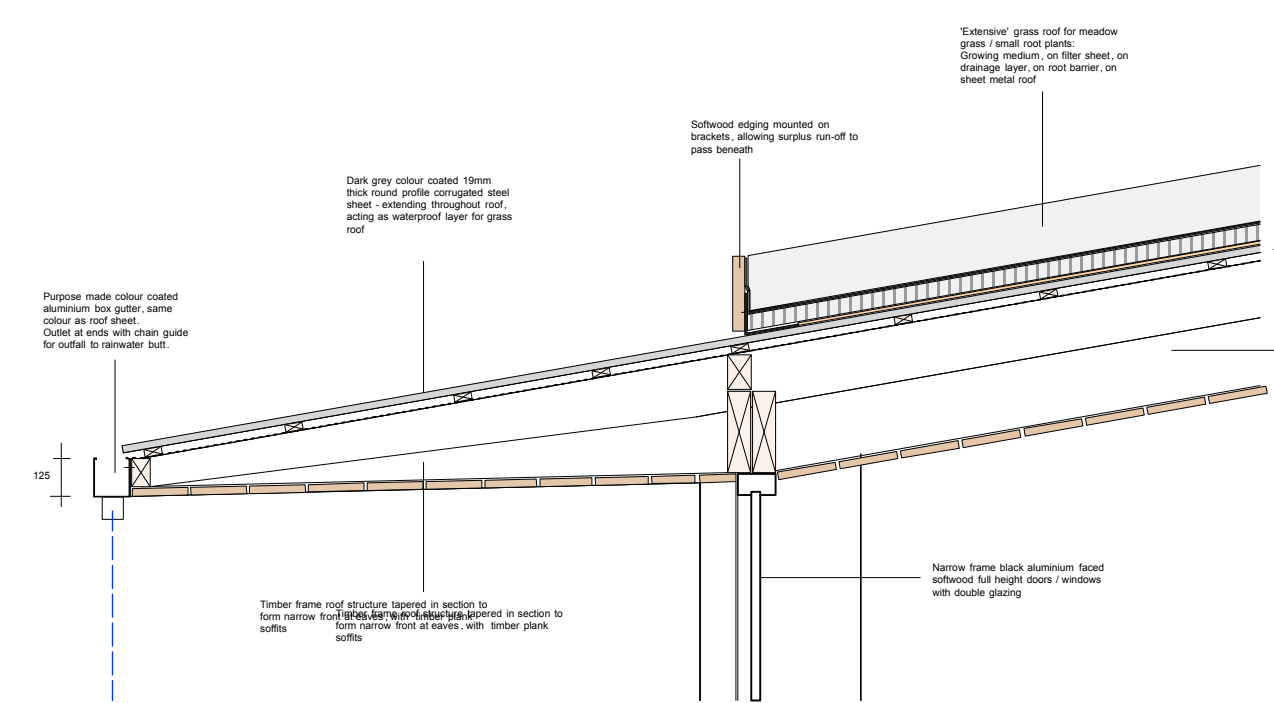
Field House D  
Single storey 197sqm GFA, 4 bedrooms.  
Site excavated into hill (clay ground, some boulders)  
Excavated material mounded to each side of house for additinal screening  
Timber frame on strip footings (containing floor insulation)  
Grass roof visually joining with land form  
Vertical timber cladding externally- full height oak / ash / larch  
Full height narrow section aluminium faced glazing panels / doors.  
Low carbon, low energy, sustainable construction:  
Natural heat gain and ventilation  
Construction material carbon minimised  
Energy consumption minimised  
High insulation and air tightness.  
Recycle water and heat  
Solar PV panel (concealed in field) power  
Air source heat pump to immersion hot water tank  
Underfloor heating.  
Feed back to grid, winter use of 100% renewables electricity.  
Softwood timber frame (locally grown where possible)  
Black corrugated metal roof and cladding.  
Hempcrete / treated sheep wool insulations  
Softwood internal linings + clayboard.  
Lime renders



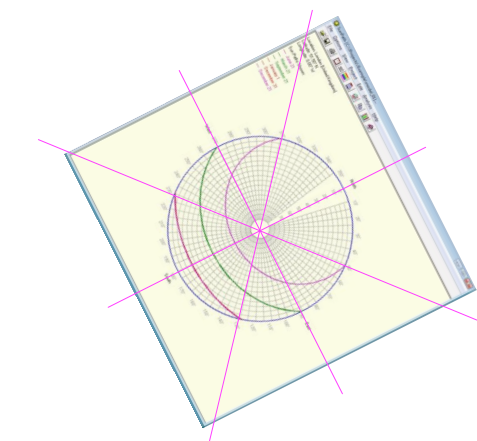
South Elevation



North Elevation



Typical projecting eaved eave detail  
1:20 @ A1, 1:40 @ A3



**Barley Knapp Farm**  
Peterchurch, HR2 0TE

Proposed Field House D  
Drawing Number: BK 10  
Scale: 1:100 @ A1, 1:200 @ A3

revised: 21 September 2022  
Priestman Architects