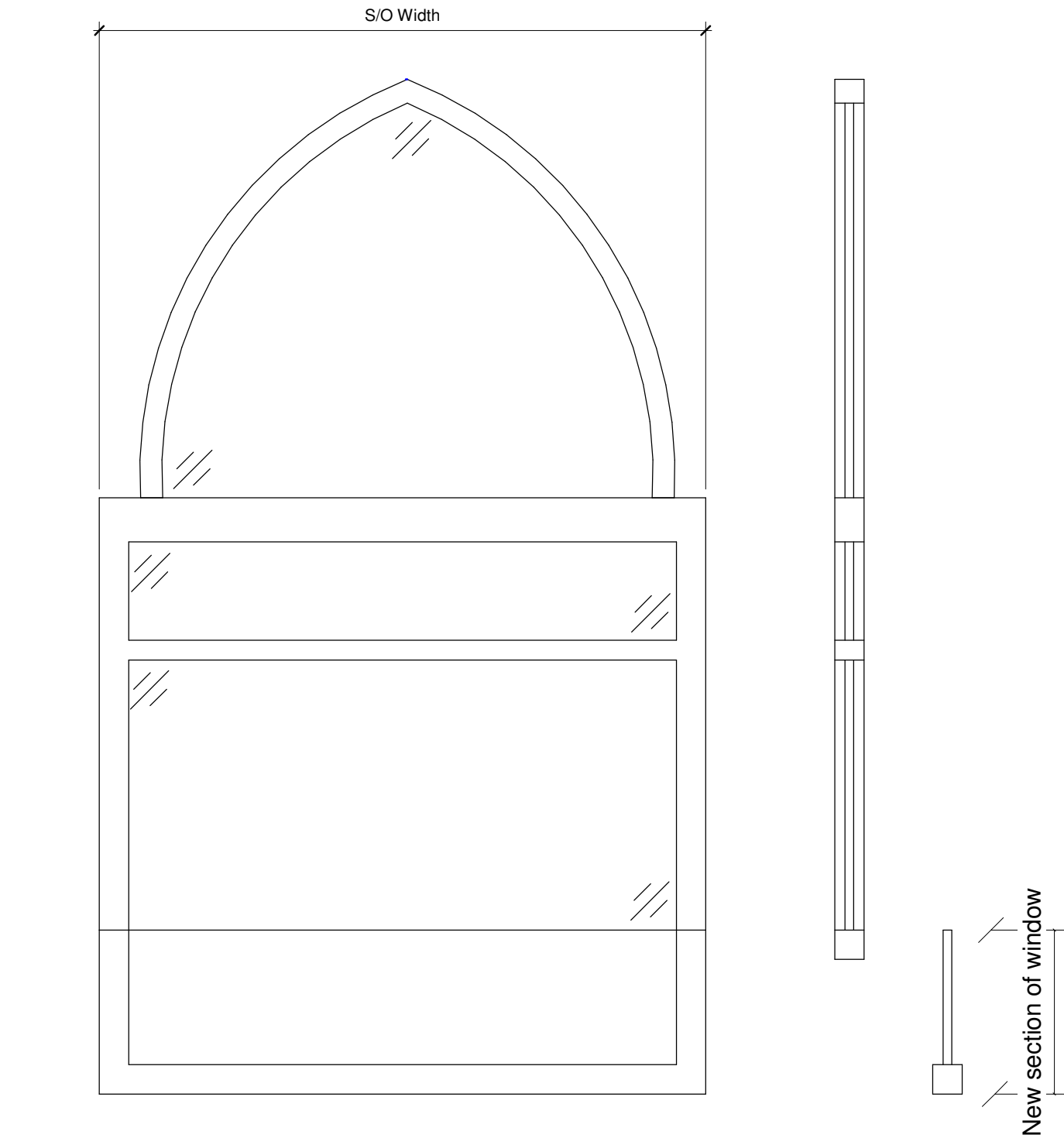


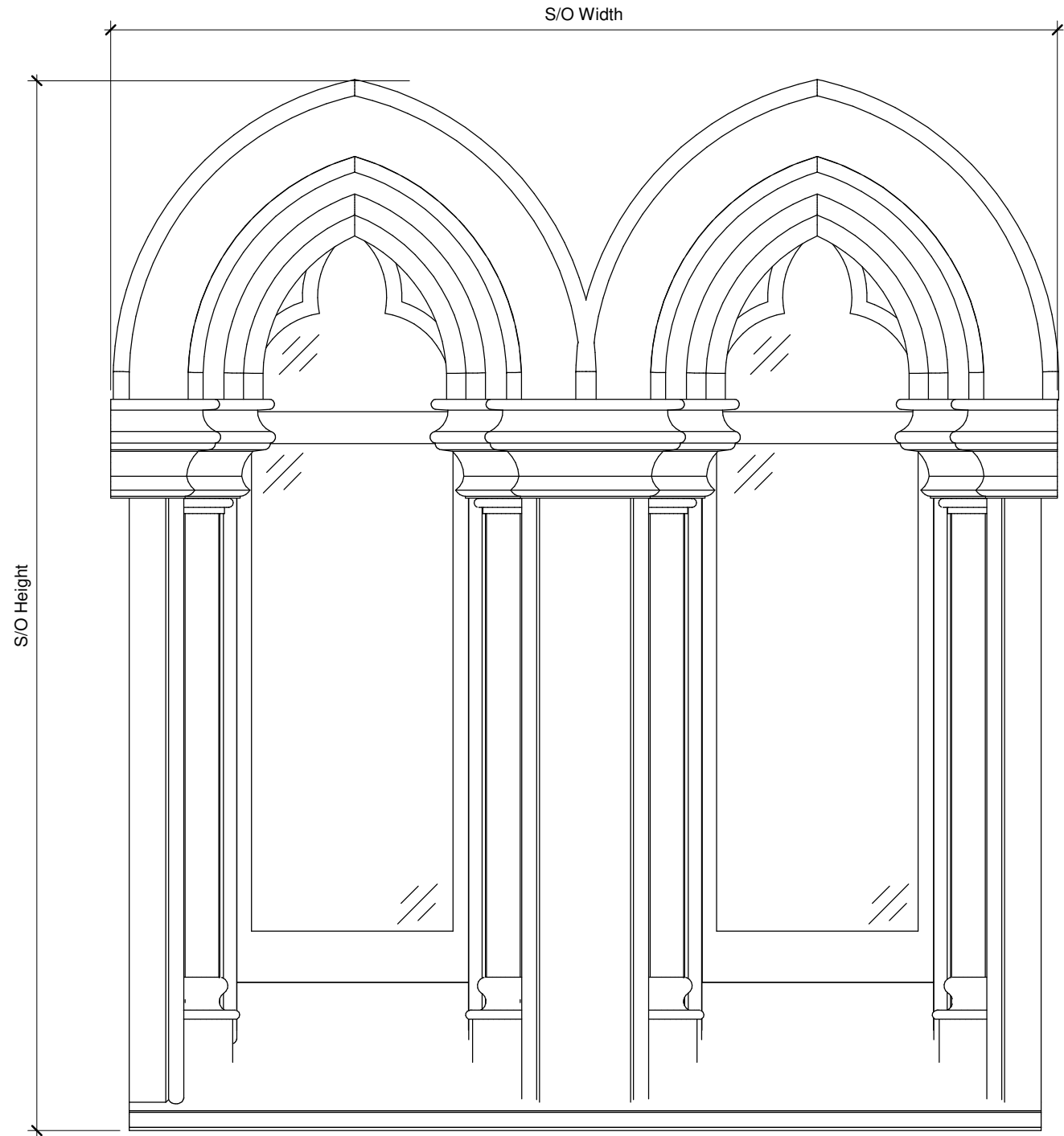
Window Type: **WT01**  
Existing pointed arched window

Window Schedule WT01	
Window Type	Count
WT01	4
WT01A	4



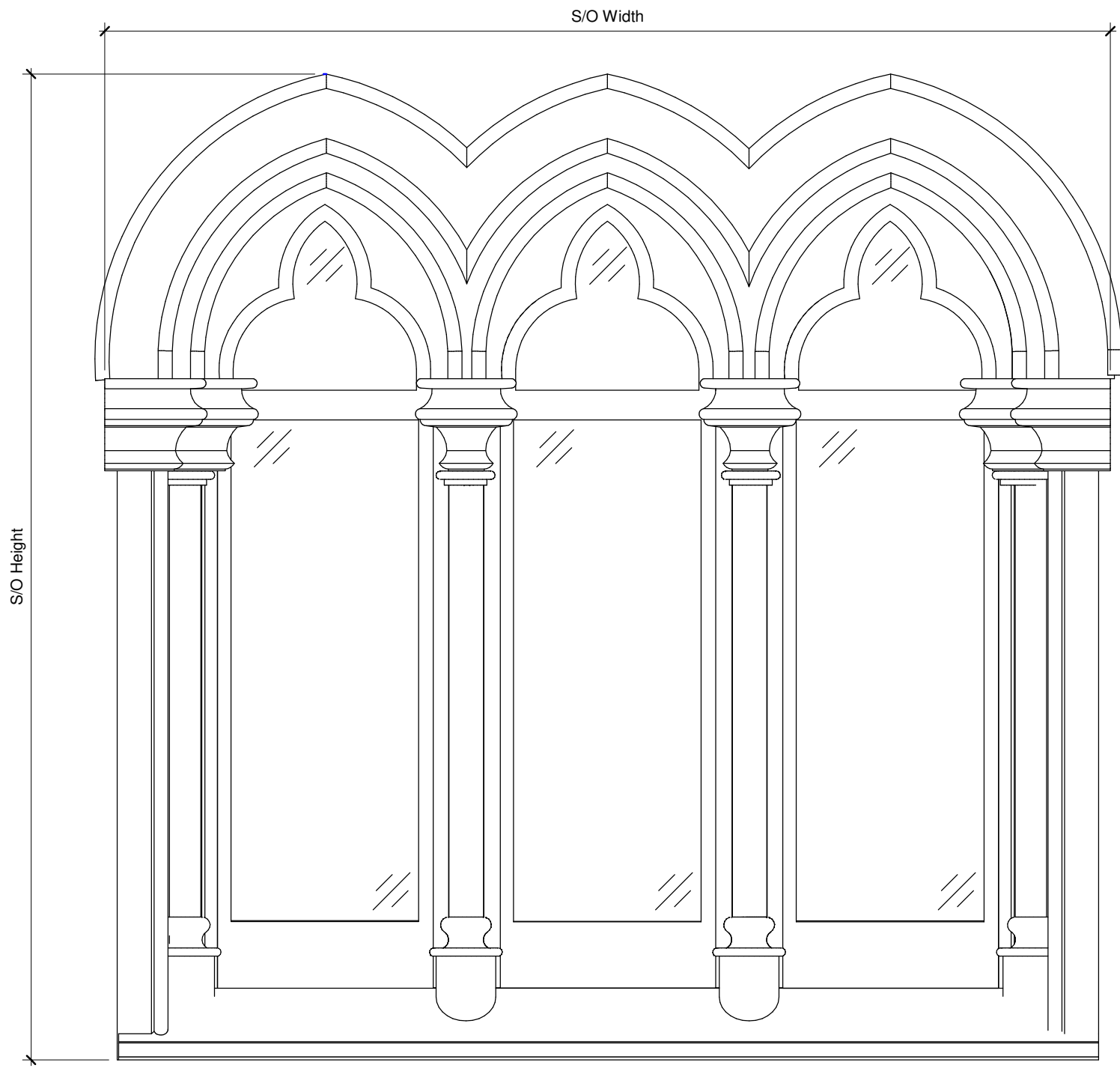
Window Type: **WT02**  
Existing double pointed arched fixed window

Window Schedule WT02	
Window Type	Count
WT02	2



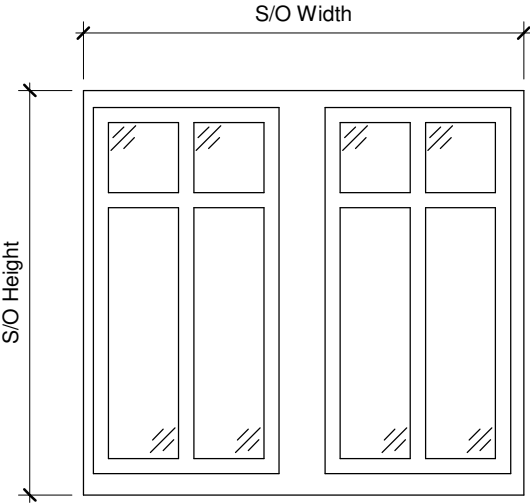
Window Type: **WT03**  
Existing triple pointed arched fixed window

Window Schedule WT03	
Window Type	Count
WT03	1



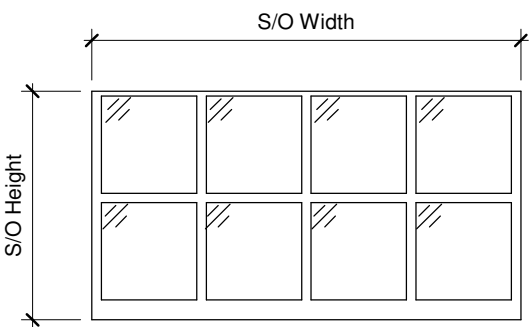
Window Type: **WT06**  
Existing fixed window

Window Schedule WT22B	
Window Type	Count
WT22B	1



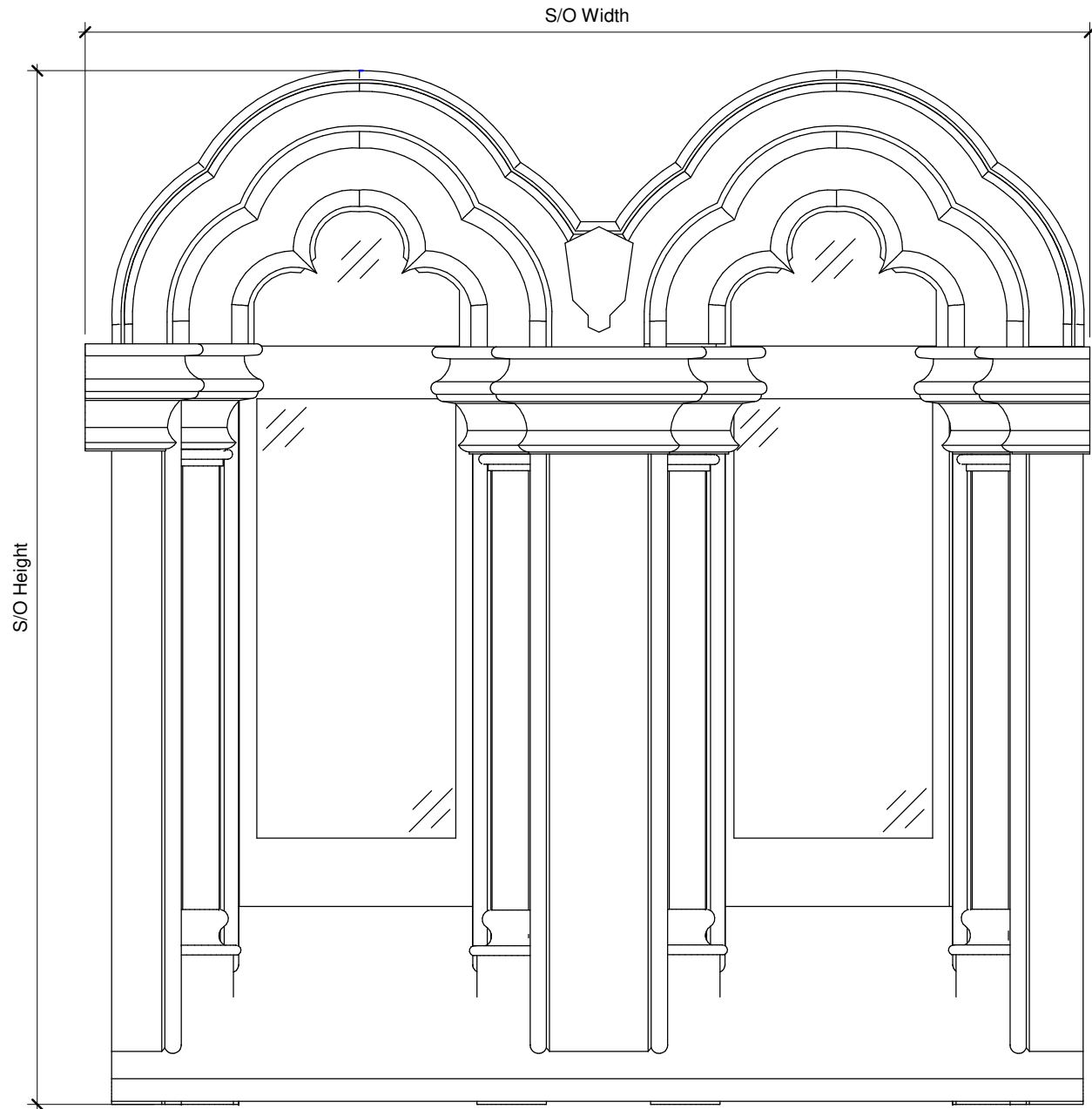
Window Type: **WT22B**  
Existing fixed window

Window Schedule WT22B	
Window Type	Count
WT22B	1



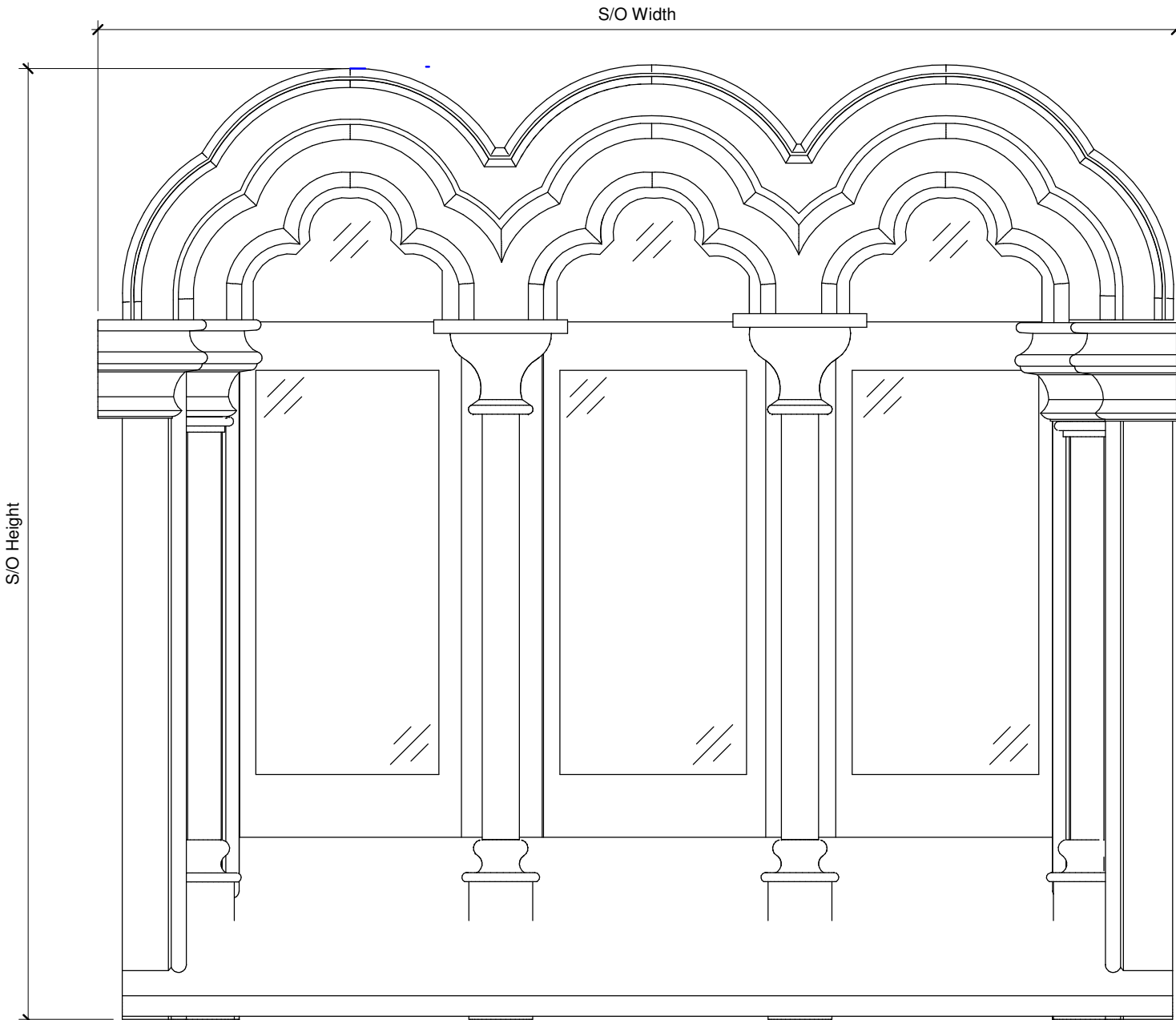
Window Type: **WT04**  
Existing double semicircular arched fixed window

Window Schedule WT04	
Window Type	Count
WT04	2



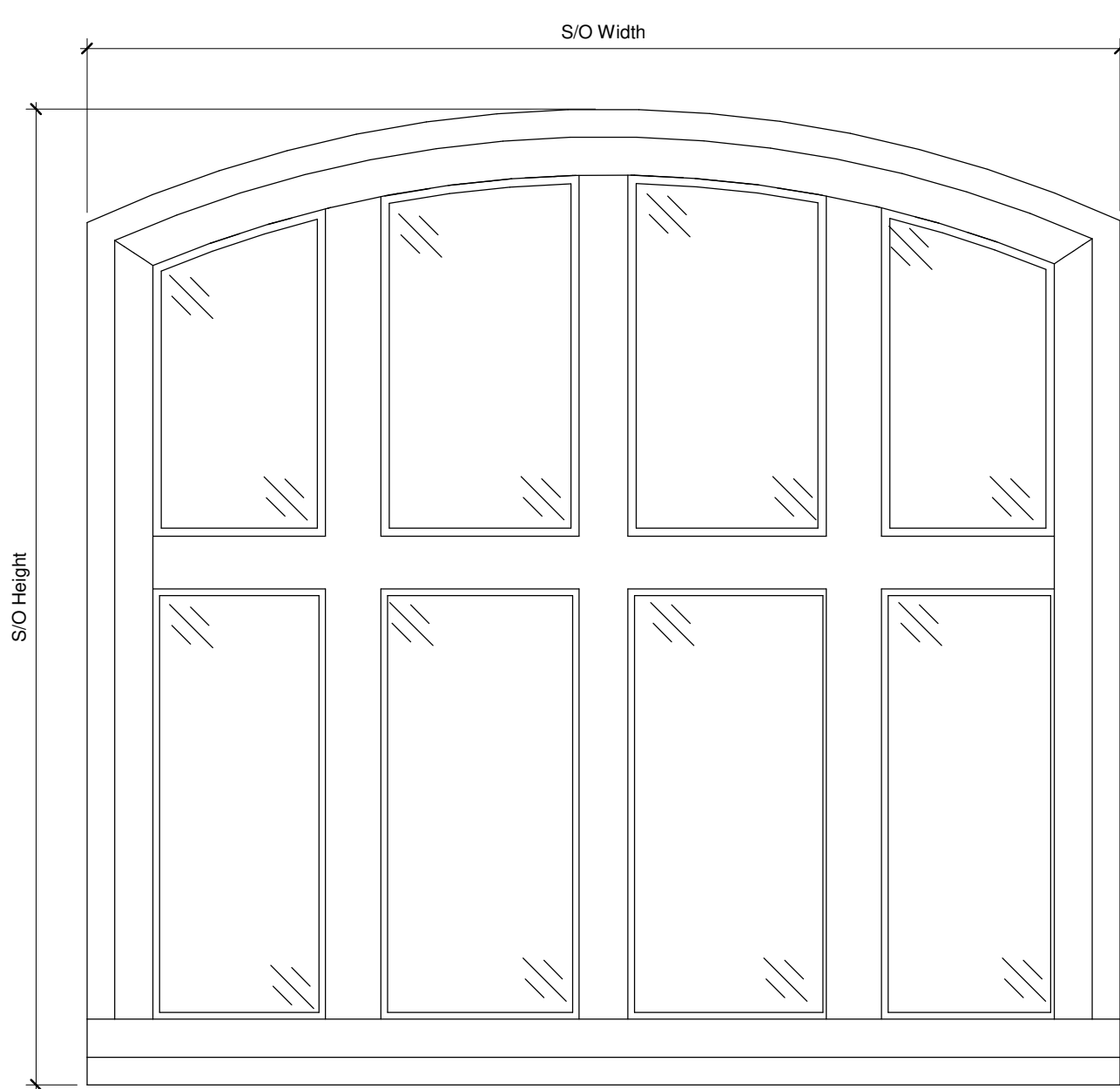
Window Type: **WT05**  
Existing double semicircular arched fixed window

Window Schedule WT05	
Window Type	Count
WT05	1



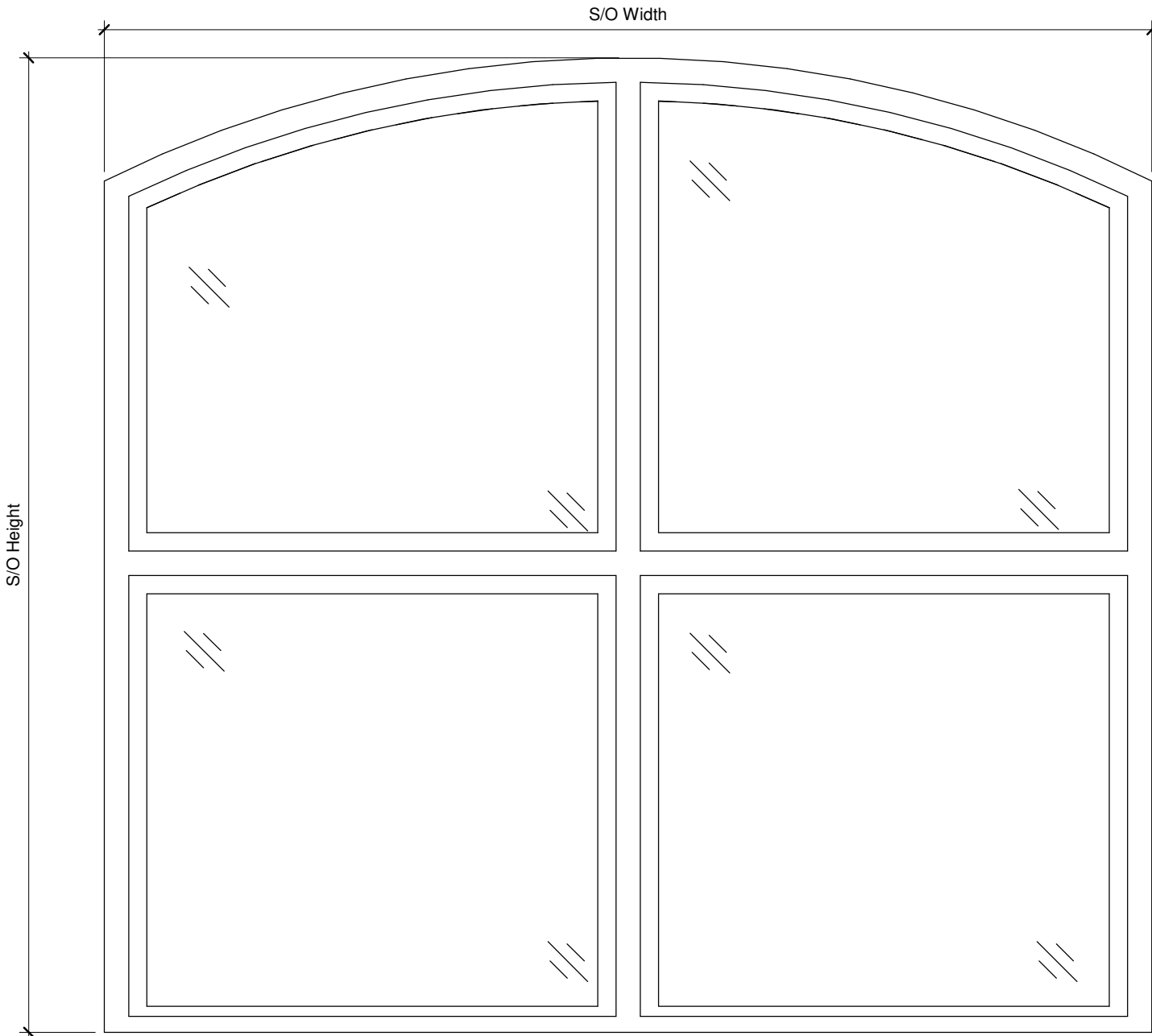
Window Type: **WT07**  
Existing fixed window

Window Schedule WT07	
Window Type	Count
WT07	3

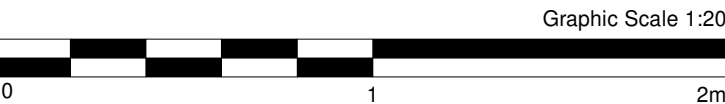


Window Type: **WT24**  
New Secondary Glazing to WT07

Window Schedule WT24	
Window Type	Count
WT24	3



Graphic Scale 1:20



**Notes**

This drawing is © Architype Ltd. Check this drawing is the latest revision. Do not scale from this drawing. Do not use the information on this drawing without checking all dimensions on site. Do not use any areas indicated for other valuation, purchase, sale or any other form of legally binding contract. Do not reproduce any part of this drawing without prior written consent. Report any discrepancies on this document to Architype. Read this drawing in conjunction with the associated models, specifications and related consultant's documents. Equivalent products / materials may be Approved where the Employer's Requirements, Thermal Performance, Airtightness and any other specified performance requirements are met. Subject to Architype "Acceptance". All materials to be certified to comply with BS 14001 or BES6001. All timber species and sources used in this development are not to be listed on the CITES appendices for endangered or threatened species (appendix I, II or III).

**GENERAL NOTE:**

- The information contained on this drawing is intended to reflect the desired architectural design intent. The contractor should check all site dimensions and will be responsible for developing this information into a technical design solution that meets all necessary standards (including responding to planning / listed building consent conditions) and then submitting to the Employers Agent and Client Design Advisor for approval prior to construction

**DRAWING NOTE:**

Drawing Note:

- The information on this drawing is to be read in conjunction with the security consultants report & the acoustic report - these reports have been produced following production of this drawing and may influence final product selection / specification.
- Read also in conjunction with specification documents and sustainability report.

Keyplan

P0 3	22/05/24	Planning Submission	IR	PN
P0 2	3/05/24	Stage 4a Cost Review	IR	PN
P0 1	16/01/23	Issued for stage approval	IR	PN
Rev	Date	Description	Drawn	Checked



Project  
Hereford Museum and Art Gallery  
Client  
Herefordshire Council  
Drawing Title

**Window Types Drawing (1 of 2)**

10265 - ART - XX - XX - DR - A - 22610

Status	Description	Rev
<b>S4</b>	For Stage Approval	<b>P0 3</b>
Date 07/30/22	Scale 1 : 20 @ A1	Drawn MY
Internal Proj Ref 10265	Model Ref 70000	Checked PN