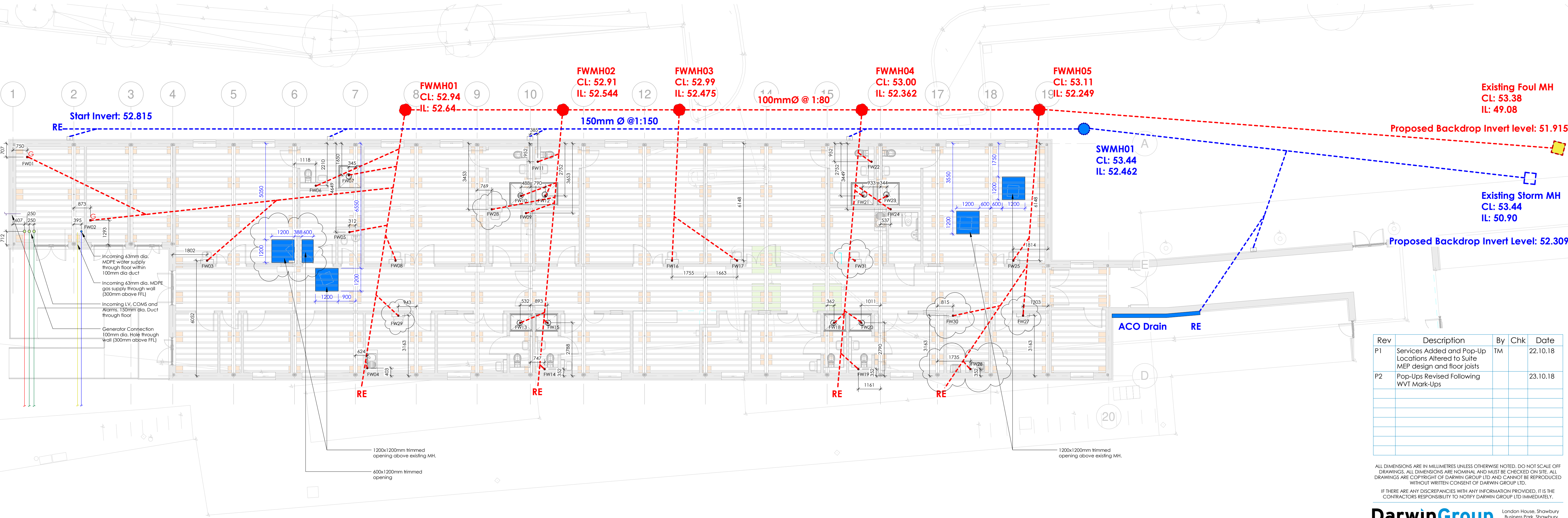


Manhole Reference	Chamber Details			Inspection Cover Details		Pipe Details		
	Chamber Diameter (mm)	Chamber Type	Cover Level	Load Class	Seal Type	Diameter (mm)	Invert Level	Depth (m)
FWMH01	450	PPIC	52.94	C250	Single	100	52.64	0.3
FWMH02	450	PPIC	52.91	C250	Single	100	52.544	0.366
FWMH03	450	PPIC	52.99	C250	Single	100	52.475	0.515
FWMH04	450	PPIC	53	C250	Single	100	52.362	0.638
FWMH05	450	PPIC	53.11	C250	Single	100	52.249	0.861
SWMH01	450	PPIC	53.44	C250	Single	150	52.462	0.978

Pipe Diameter (mm)	Length of pipe (l/m)
100	160
150	88
ACO	5m

Drainage Key		Services Key	
	Proposed Floor Gully	Water	
	Proposed Foul Water Manhole		
	Proposed Foul Water Drain Pipes	Gas	
	Rain Water Pipes	Electric	
	Rodding Eye	Ancillary Services	
	Proposed Storm Water Manhole	Generator Connection	
	Storm Water Drain Pipes		



Rev	Description	By	Chk	Date
P1	Services Added and Pop-Up Locations Altered to Suite MEP design and floor joists	TM		22.10.18
P2	Pop-Ups Revised Following WVT Mark-Ups			23.10.18

ALL DIMENSIONS ARE IN MILLIMETRES UNLESS OTHERWISE NOTED. DO NOT SCALE OFF DRAWINGS. ALL DIMENSIONS ARE NOMINAL AND MUST BE CHECKED ON SITE. ALL DRAWINGS ARE COPYRIGHT OF DARWIN GROUP LTD AND CANNOT BE REPRODUCED WITHOUT WRITTEN CONSENT OF DARWIN GROUP LTD.

IF THERE ARE ANY DISCREPANCIES WITH ANY INFORMATION PROVIDED, IT IS THE CONTRACTORS RESPONSIBILITY TO NOTIFY DARWIN GROUP LTD IMMEDIATELY.

DarwinGroup Construction Has Evolved
Design — Engineering — Contracting — Offsite — Minor Works
London House, Shawbury Business Park, Shawbury, Stretwisbury, S14 4EA
TEL: 01939 252900
www.darwingroupuk.co.uk

PROJECT TITLE: Hereford County Hospital
ADDRESS: Stonebow Rd, Hereford HR1 2BN

DRAWING TITLE: Proposed_Drainage&Services

DRAWING REFERENCE							
180085		DGL	01	XX	DR	A	1200
PROJECT	ORIGINATOR	VOLUME	LEVEL	TYPE	ROLE	NUMBER	
INITIAL ISSUE DATE		INITIAL ISSUE BY		INITIAL CHECKED BY		GIFA	
16/10/18		WEB		TM		657 m ²	
SUITABILITY				SCALE		SHEET	REV
S2 FOR INFORMATION				A5 indicated		A1	P2
STATUS CODE		STATUS DESCRIPTION					

00_Proposed_Drainage&Services
1 : 100

