

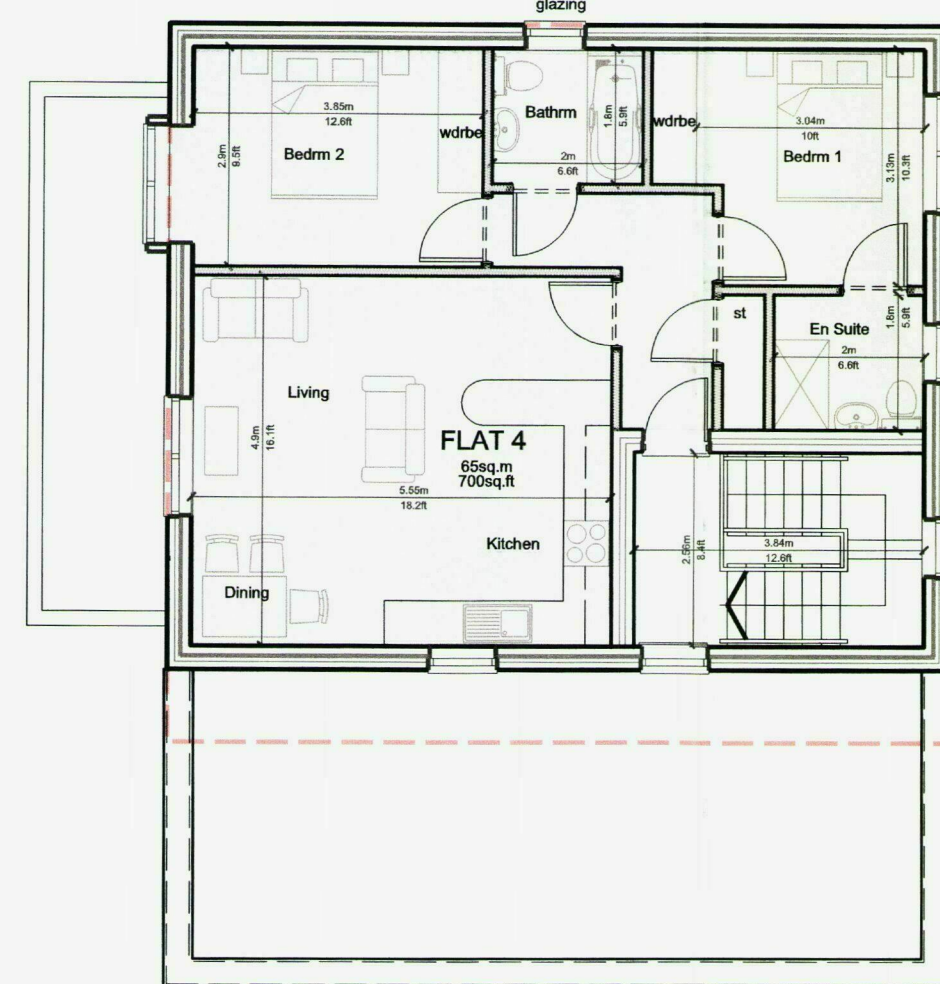
## BLOCK A

NORTH EAST (ST OWEN STREET) ELEVATION

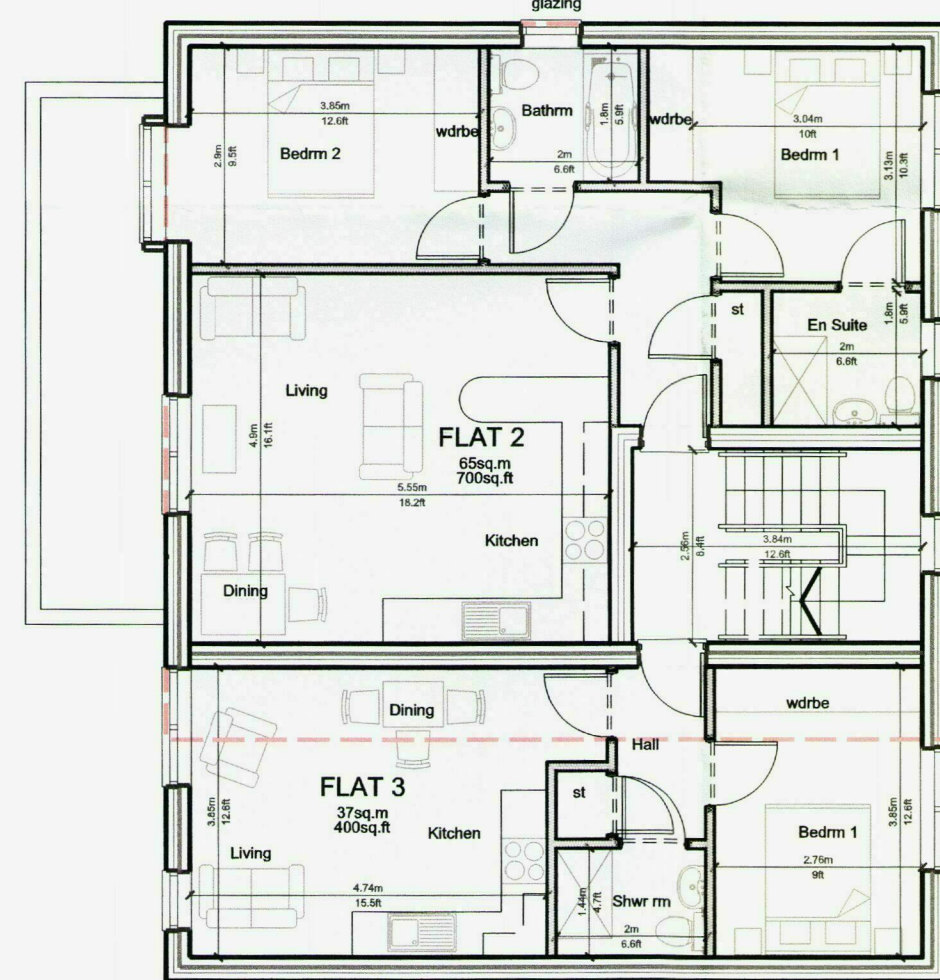
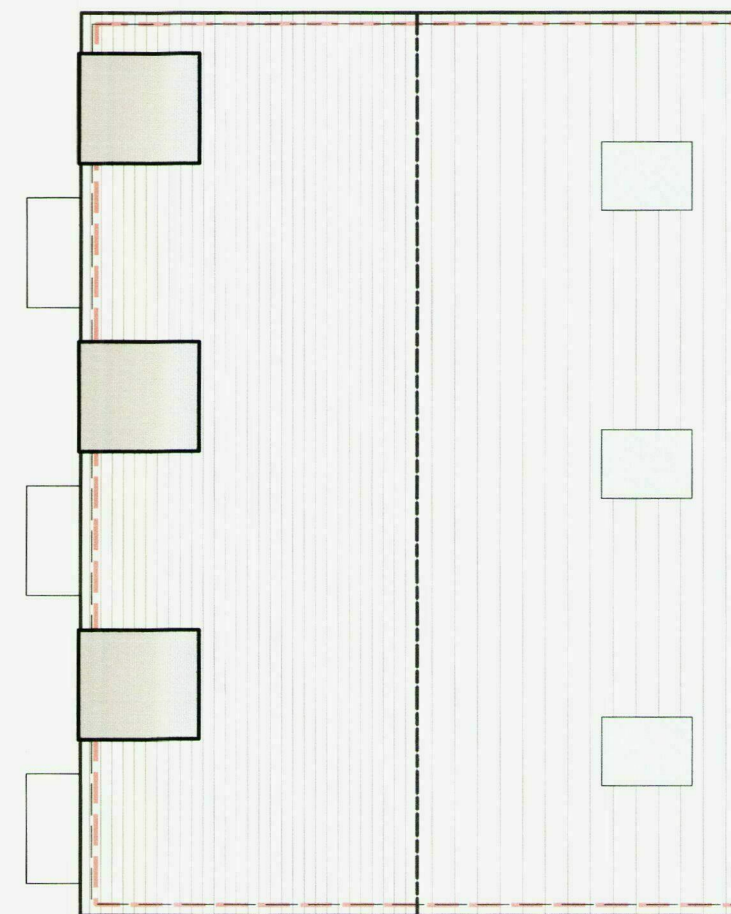
SOUTH EAST ELEVATION

NORTH WEST ELEVATION

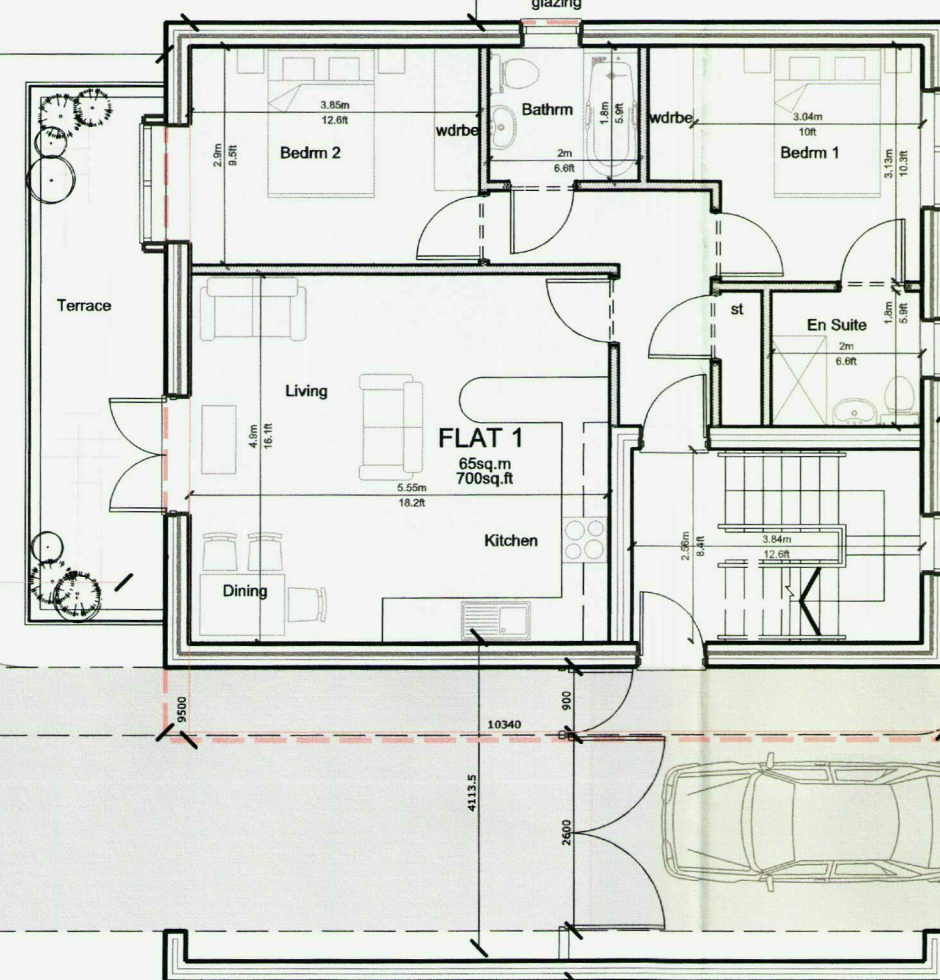
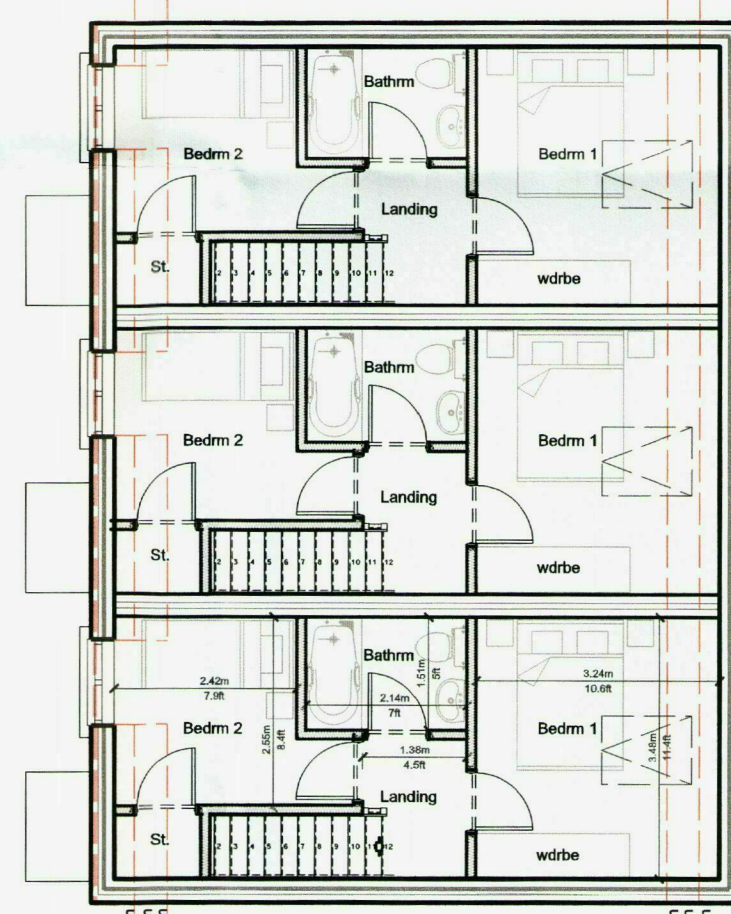
SOUTH WEST (REAR) ELEVATION



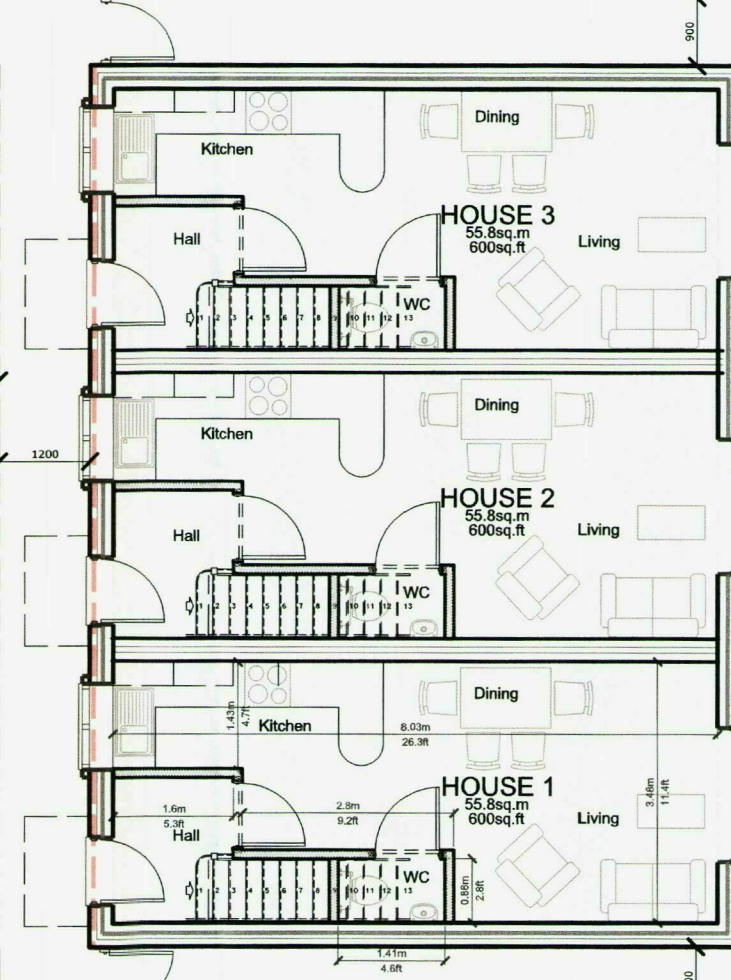
Extent of current Planning Approval



Extent of current Planning Approval



Extent of current Planning Approval

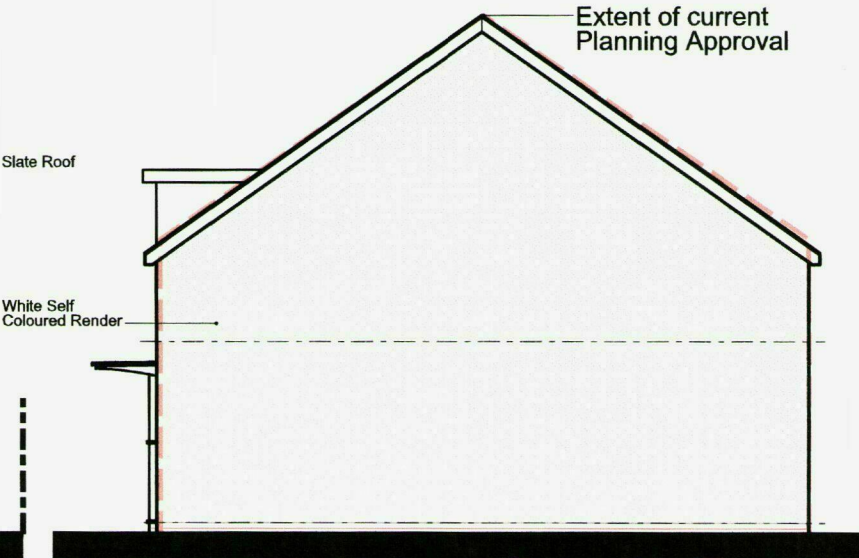


## BLOCK B - ELEVATIONS

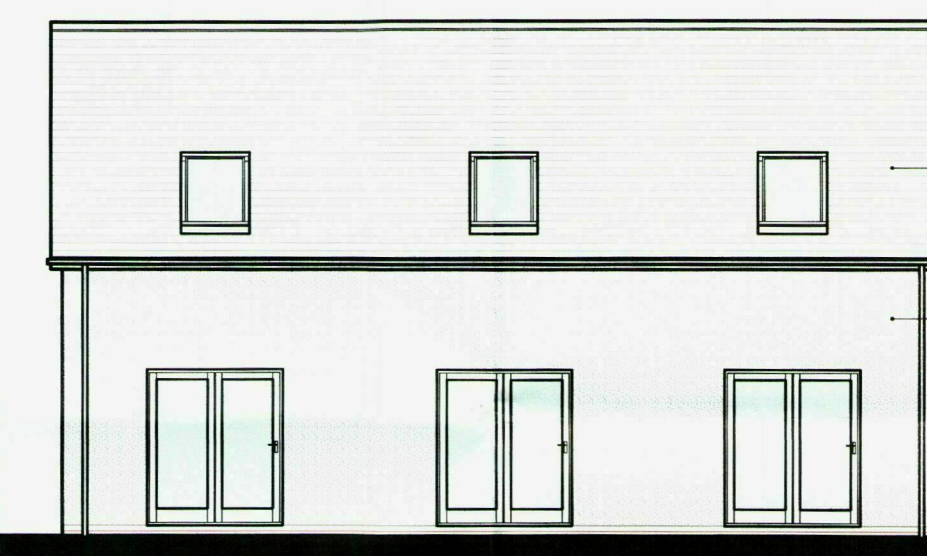
### BLOCK B - ELEVATIONS



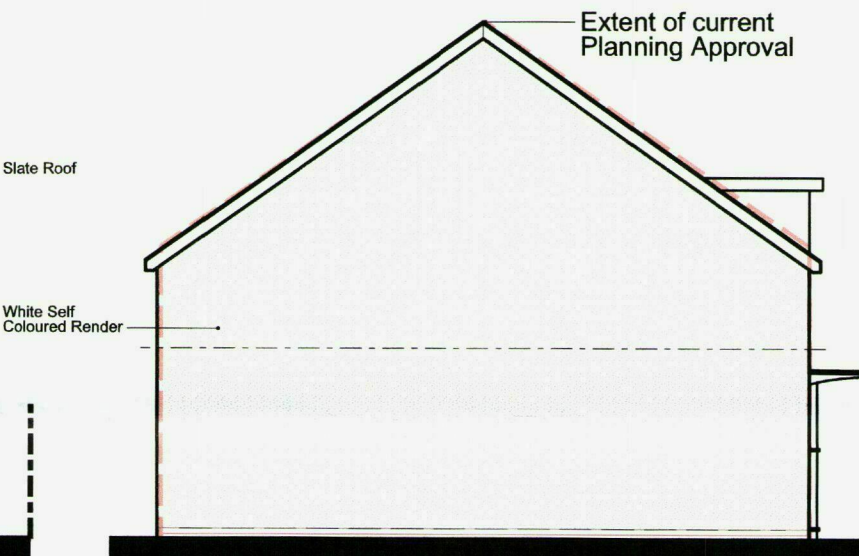
NORTH EAST (FRONT) ELEVATION



NORTH WEST ELEVATION



SOUTH WEST (REAR) ELEVATION



SOUTH EAST ELEVATION

### SCHEDULE OF AREAS

all areas gross internal

#### BLOCK A

FLAT 1 - 2 BED - 65sq.m - 700sq.ft.

FLAT 2 - 2 BED - 65sq.m - 700sq.ft.

FLAT 3 - 1 BED - 37sq.m - 400sq.ft.

FLAT 4 - 2 BED - 65sq.m - 700sq.ft.

includes some area of restricted headroom less than 1.8m at second floor level

APPROX TOTALS - 232sq.m - 2498sq.ft.

#### BLOCK B

HOUSE 1 - 2 BED - 55sq.m - 600sq.ft.

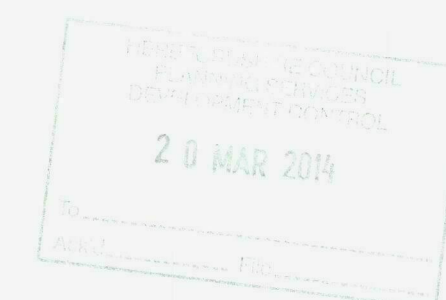
HOUSE 2 - 2 BED - 55sq.m - 600sq.ft.

HOUSE 3 - 2 BED - 55sq.m - 600sq.ft.

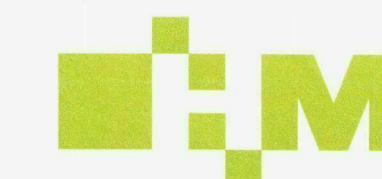
includes some area of restricted headroom less than 1.8m at second floor level

APPROX TOTALS - 165sq.m - 1800sq.ft.

APPROX TOTALS - 397sq.m - 4300sq.ft.



N - 19 March 14 - Block A elevations revised - C.E.  
M - 25 April 13 - Scheme layout revised - C.E.  
L - 18 March 13 - Scheme layout reduced - C.E.  
NB - NOT BASED UPON ACCURATE SURVEY INFORMATION  
REVISIONS



hookmasonarchitecture

Hook Mason Limited  
41 Widemarsh Street  
Hereford  
HR4 9EA

t. 01432 352299  
f. 01432 352272  
e. info@hookmason.co.uk  
w. hookmason.co.uk

PERFECTION HOMES

76-84 ST OWEN STREET  
HEREFORD

PROPOSED FLOOR PLANS & ELEVATIONS

SCALE @ A1

1:100

DRAWN BY IDJE/CE

DATE

OCT 12

DRAWING NO.

5107-12-2N

CHECKED BY DB

