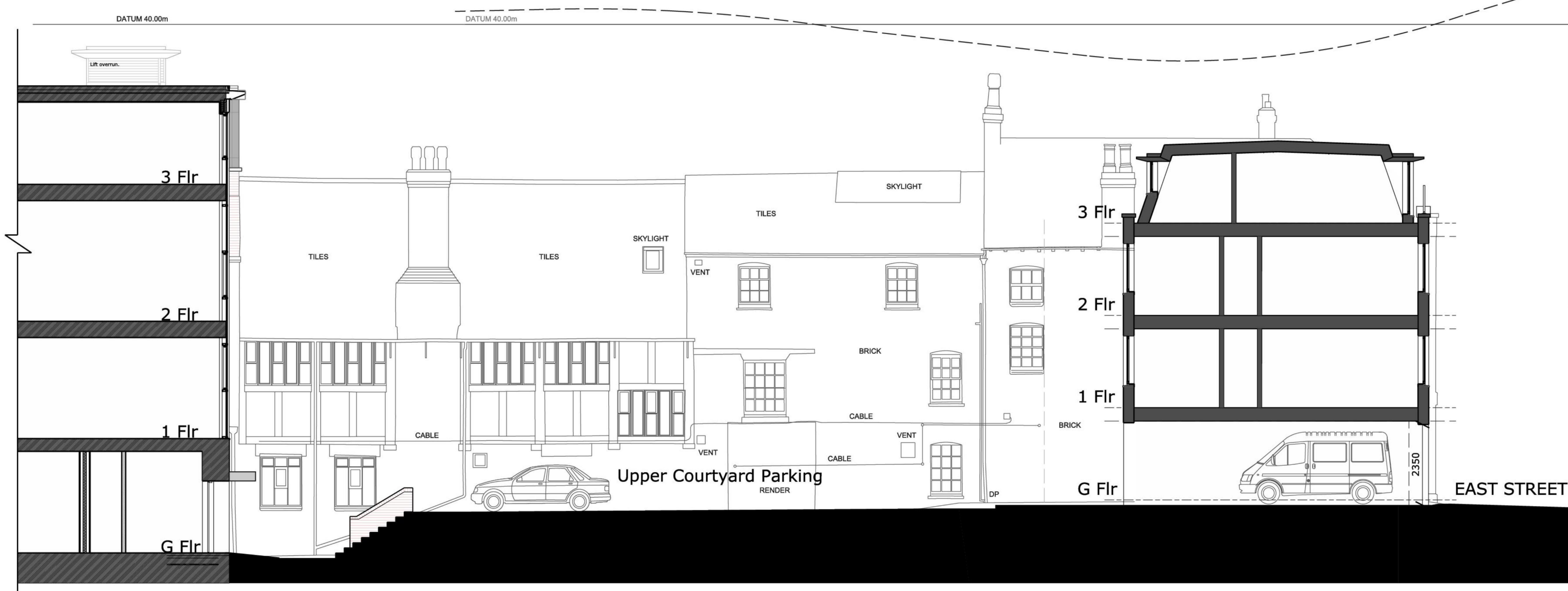
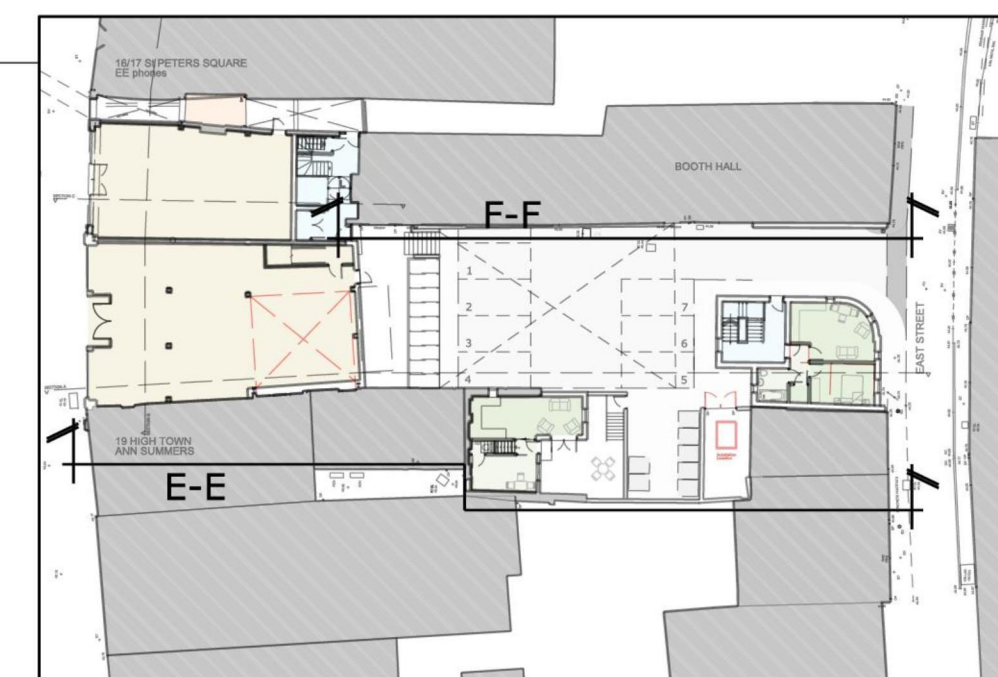


WEST ELEVATION - E-E



SECTION AND ELEVATION LOOKING TOWARDS THE BOOTH HALL - F-F



KEY TO ELEVATIONS

REVISIONS B - 03-10-17 - Ground Floor Apartment added to East Street Cottage Conversion added, Scheme updated - CE



hookmasonarchitecture

Hook Mason Limited
Studio 2, Thorn Office Centre
Rotherwas, Hereford
HR2 6JT

t. 01432 352299
f. 01432 352272
e. info@hookmason.co.uk
w. hookmason.co.uk

ALBAN HOUSE (HEREFORD) LTD

16-18 HIGH TOWN,
HEREFORD
HR1 2AA

PROPOSED SECTIONAL ELEVATIONS

SCALE @ A2
1:100

DATE
MAY 17

DRAWING NO.
7051-1-08B

DO NOT SCALE FROM THIS DRAWING

DRAWN BY CE

CHECKED BY CW

