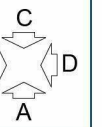
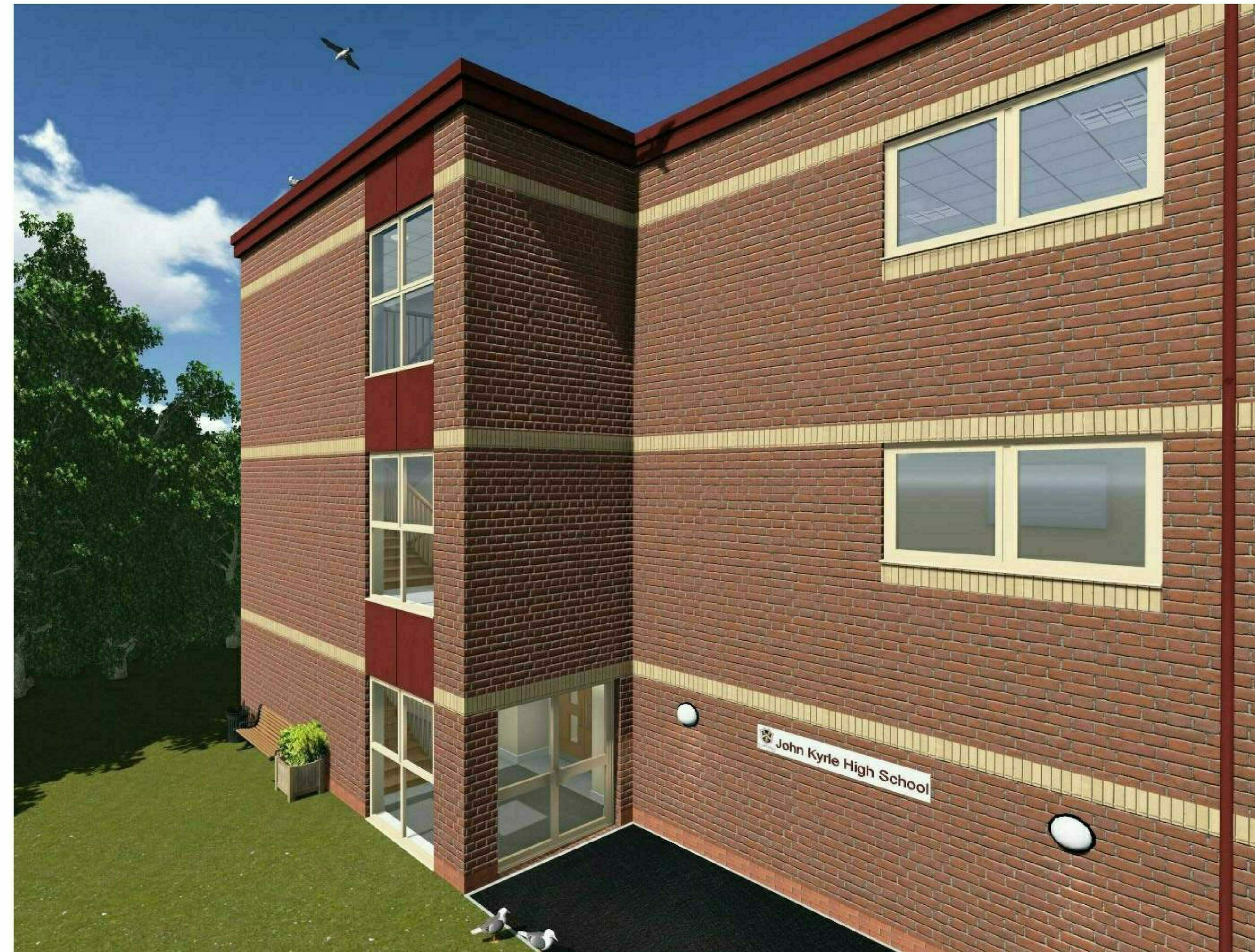


John Kyrle High School



LEGEND
 Specification takes precedence over all drawings
 All Furniture Shown Indicative only
 Steps and ramps shown indicative only
 Building Control may require variations to the steps & ramps design shown.
 Please Note:
 All 3D visuals are indicative. Please see technical specification for full scope of works.



Rev	Description	By	Date
A	Internal layout altered to match 'Clients' request through E-mail dated 06/12/13.	DK	10/12/13
B	AC Units, Condenser Units & Ventilation vents added. Inlet and exhaust pipes indicated. Curtain wall on Elevation A changed to brick only. Curtain Wall on Elevation B changed to windows and coloured cladding panels. All fire exit doors are now solid. External stair case run altered. Internal double doors added to each corridor. New window added in the Staff room.	DK	22/04/14

[illegible]

GFA	862.0 m ²	Total	33
-----	----------------------	-------	----

ALL DIMENSIONS ARE IN MILLIMETRES UNLESS OTHERWISE NOTED. DO NOT SCALE OFF DRAWINGS. ALL DIMENSIONS ARE NOMINAL AND MUST BE CHECKED ON SITE. ALL DRAWINGS ARE COPYRIGHT OF BUILT OFF SITE AND CANNOT BE REPRODUCED WITHOUT WRITTEN CONSENT OF BUILT OFF SITE.

John Kyrle High School
FQ007 -PL-290

20/01/14	C	DK	DH	
	REVISION	DRAWN	CHECKED	APPROVED

BuiltOffSite
The Education Specialists