

SAFEGUARD APEX BATTERY GARAGES

The market leading Compton SAFEGUARD range of top-quality, high-specification community garages is now available with an apex-style, steel security roof. The new range of SAFEGUARD APEX BATTERY GARAGES meets buyers and users needs by providing high vandal resistance, effective security and low maintenance combined with a more traditional appearance. The continuous eaves-to-ridge 'Hi Load' steel sheeting has a bold-roll tile profile with an external dark brown coating and an internal anti-condensation finish. The gable end peak is durable box profile steel cladding.



Block of four large SAFEGUARD SA30/57 garages.

With battery garages mostly located in community housing schemes where the general public has access 24 hours a day, vandalism and theft are serious problems that need addressing.

By providing high vandal resistance, effective security and low-maintenance combined with a more traditional appearance, **SAFEGUARD APEX BATTERY GARAGES** meet buyers and users needs most effectively and are the number one choice because of these design features and benefits:

- ✓ Order with complete confidence from a BS EN ISO 9001 quality assured supplier backed up by a 10-year structural guarantee.
- ✓ Materials and finishes are carefully chosen for good looks and minimum maintenance for the lifetime of your building.
- ✓ The wide choice of sizes and layouts - 3 widths and 2 lengths, 152mm or 229mm left and right-hand steps between garages and back-to-back blocks - offers buyers the most cost effective solutions and users the most practical access to the garages.

- ✓ Our nation-wide construction service uses skilled installation teams for guaranteed performance and quality every time.
- ✓ Heavy-duty, multi-spar, aggregate faced, **Compton SAFEGUARD** reinforced concrete wall panels with vertical reinforced ribs at 200mm centres give added strength.
- ✓ All concrete front gutters and doorposts incorporate galvanised reinforcement for long-term durability.
- ✓ The robust, high performance, apex-style, steel security roof has bold-roll tile profile roof sheeting and an anti-condensation internal finish.
- ✓ Retracting, spring-counterbalanced, plastisol-coated steel doors with vertical swaging are supplied pre-hung in matching steel frames for long-term reliability and lowest maintenance.
- ✓ For effective security, vulnerable door handles have been eliminated. To unlock a garage door, the key is inserted into a flush lock to release four spring operated latches.
- ✓ A hardwood weather bar is fitted to the floor slab behind each garage door to alleviate water ingress.



Block of 12 stepped SAFEGUARD SA24/49 garages.



Blocks of 4 and 3 SAFEGUARD SA24/49 garages.



Block of 6 SAFEGUARD SA24/49 garages.



Blocks of 4 back-to-back SAFEGUARD SA24/49 garages.

For the widest range, best value, quality and service choose **PREMIUM** or **SAFEGUARD** battery garages by Compton

13 JUN 2003

To:
At:



SAFEGUARD

APEX BATTERY GARAGES

Compton
buildings
Market Leaders

SAFEGUARD APEX BATTERY GARAGES code (SA) are offered with a choice of 3 standard widths (codes 24, 27 and 30) and 2 lengths (Codes 49 and 57). An example of a **SAFEGUARD GARAGE** code is **SA24/49** for garages with an internal width of 2.44m (8ft 0in) and an internal length 4.88m (16ft 0in).

Safeguard Garage Widths and Door Widths			
Model Code	SA24	SA27	SA30
External 1st Bay	2.69m (8ft 10in)	3.00m (9ft 10in)	3.30m (10ft 10in)
External Add bay	2.52m (8ft 3in)	2.82m (9ft 3in)	3.12m (10ft 3in)
Internal All bays	2.44m (8ft 0in)	2.74m (9ft 0in)	3.05m (10ft 0in)
Door Leaf	2.28m (7ft 6in)	2.58m (8ft 6in)	2.88m (9ft 6in)
Drive Through	2.16m (7ft 1in)	2.46m (8ft 1in)	2.76m (9ft 1in)

Safeguard Garage Lengths		
Model Code	External Length	Internal Length
/49	5.11m (16ft 9in)	4.88m (16ft 0in)
/57	5.92m (19ft 5in)	5.69m (18ft 8in)

Overall external lengths of back-to-back garages are double the above external lengths minus 76mm (3in).

Safeguard Garage Door Heights			
Model Code	SA24	SA27	SA30
Door Leaf	1.98m (6ft 6in)		
Drive Through	1.89m (6ft 2in)		

CONCRETE BASES & STEPPED GARAGES

Concrete bases must be both flat and level. For sloping sites, the facility exists to accommodate vertical left or right hand base steps with a height of 152mm (6in) or 229mm (9in) between garages. The shared party wall is positioned on top of the base step. Stepped concrete doorposts enable the doors and roofs to follow the steps in the bases. As it is essential that stepped concrete base slabs are cast accurately, a job specific base setting out drawing is provided on request.

UP AND OVER DOORS



Garage doors are of the sprung counterbalanced retractable type pre-installed in matching steel box profile frames. All doors (vertically swaged) and frames are fabricated from galvanised steel sheet and finished externally in a brown plastisol coating (an optional white plastisol coating is available). A numbered key is inserted into the flush lock and turned to simultaneously release four sprung slam latches. A hardwood weather bar is surface fitted to the base across the door opening to alleviate water ingress.

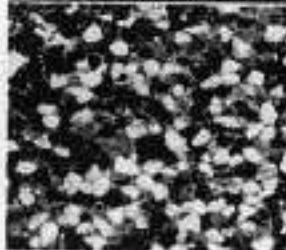
ROOF

For maximum durability, the roof is continuous eaves-to-ridge 'Hi Load' galvanised steel sheeting with a textured tile effect profile in a dark brown colour. All roofing sheets have an internal anti-condensation coating as standard for improved performance and added durability.

WALLS

Heavy-duty, steel reinforced non-combustible, precast concrete panels with vertical steel reinforced stiffening ribs at 200mm centres finished externally with an applied spar aggregate. All connecting bolts and other fittings are rusting resistant. All external joints are sealed internally with mastic. Gable peaks on end elevations have durable box profile sheeting with a mushroom plastisol finish. The wall to roof steel verge trims are finished to match the roof.

AGGREGATE FINISH



This maintenance-free, attractive, multi-coloured spar finish harmonises well with surroundings. The spar is factory applied to the front face of concrete doorposts, and wall panels. Aggregate faced concrete samples are available on request for planning applications.

RAINWATER DISPOSAL

Front elevations have aggregate faced concrete gutters above each door draining into internal aluminium downpipes cast into each doorpost to discharge rainwater at slab level from angled aluminium pipe shoes.

Rear elevations have Brown PVCu "Squareflo" gutters fitted to a brown plastisol steel fascia and 65mm square PVCu "close to wall" downpipes fitted to the rear wall to minimise the risk of vandal damage.

LAYOUT DRAWINGS

Standard plan and elevation drawings for battery garages are available for submission to the Local Authority. These also provide information on base sizes, foundation details and a cross section.

GARAGE CONSTRUCTION

Compton battery garages and buildings are erected Nation-wide by specialist construction teams.



Block of 3 SAFEGUARD SA24/49 garages.

SAFEGUARD BATTERY GARAGES
SAFEGUARD APEX BATTERY GARAGES
SAFEGUARD EXTRA-HIGH GARAGES
SAFEGUARD STORE BUILDINGS
PREMIUM BATTERY GARAGES
PREMIUM EXTRA-HIGH GARAGES
PREMIUM STORE BUILDINGS
OMNI MULTI-PURPOSE BUILDINGS

are available exclusively from:

Compton Buildings Limited
Commercial Division

Station Works, Fenny Compton,
Southam, Warwickshire CV47 2XB

Telephone: 01295 771748

Facsimile: 01295 771151

WebSite: www.comptoncommercial.co.uk

Email: sales@comptoncommercial.co.uk

To discuss your requirements or request a quotation please contact our Commercial Division as above.