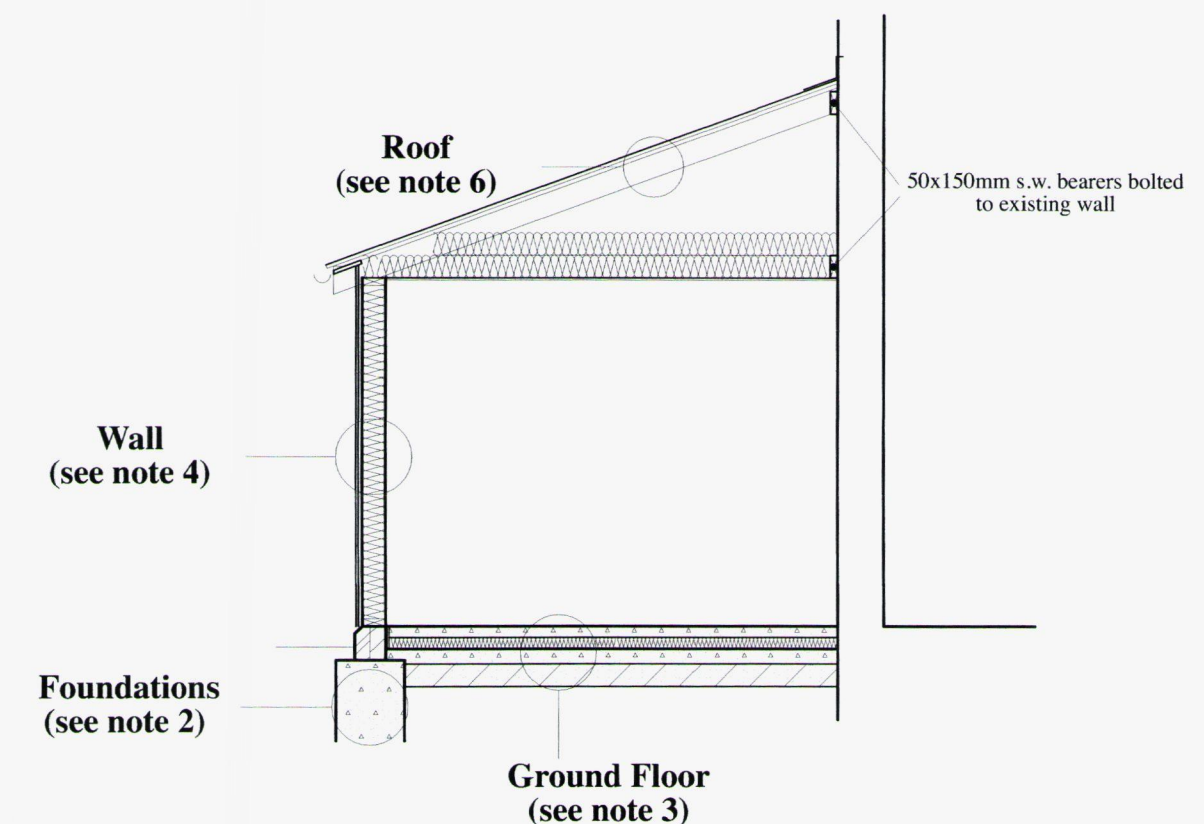


Ground Floor Plan

Scale bar  
0.1m @ 1:5  
0.4m @ 1:20  
1.0m @ 1:50  
2.0m @ 1:100  
4.0m @ 1:200  
10.0m @ 1:500  
25.0m @ 1:1250



Section A-A

## CONSTRUCTION NOTES

### 1. DRAINAGE DETAILS

100mm dia u.p.v.c. foul drains at 1 in 40 fall with pea gravel bed & surround ditto surface water drains at 1 in 60 fall with pea gravel bed & surround

### 2. BASE WALLS & FOUNDATIONS

hyload damp proof course on  
100mm dense concrete blockwork internally  
100mm brickwork externally with plinth header course  
450mm wide concrete trench fill foundation 1:3:6 mix (depth to be agreed with L.A. Building Inspector)

### 3. FLOOR

GROUND FLOOR  
75mm floor screed incorporating underfloor heating pipes on  
500 gauge polythene separating layer on  
75mm polyurethane insulation with  
25mm of same insulant to exposed floor perimeter on  
100mm limecrete floor slab on  
1200 gauge polythene d.p.m. on  
blinded hardcore

### 4. WALLS

weatherboard externally on  
40x50mm treated battens on  
breather membrane on 10mm OSB board on  
50x140mm structural frame with vertical studs @ 600mm c/c  
140mm rockwool insulation between studs  
12.5mm plasterboard & skin internally

### 5. DOORS & WINDOWS

Timber casement window fitted with 4:16:4 low E (hard coating) double glazed sealed units.  
Window & door to standard joinery design fitted with draught strips.

### 6. ROOF

Natural slates on  
25x50mm treated battens on  
breathable felt membrane on  
50x150mm C16 rafters @ 400mm c/c  
50x150mm C16 ceiling joists @ 400mm c/c  
12.5mm foil backed plasterboard & skim ceiling with  
150mm fibreglass insulation between ceiling joists &  
150mm fibreglass insulation over  
100mm half round upvc gutter & 68mm down pipe

### 7. VENTILATION

dashed lines to window elevation denotes opening lights  
mechanical ventilation provided at the following ratings:  
W.C. - 6 litres/sec (ref EXT 1)  
Utility- 30 litres/sec (ref EXT 2)  
(both operated by light switch with 15 minute over-run)

### 8. PLUMBING

shower and wash hand basin to have 40mm dia u.p.v.c. wastes fitted with 75mm deep seal traps.

### 9. FIRE DETECTION

S.A. indicated on floor plan denotes mains operated smoke alarm to B.S. 5446

### 10. ELECTRICAL

Energy efficient lighting to be provided in accordance with Table 4, Part L1. All electrical work required to meet the requirements of Part P (electrical safety) to be designed, installed, inspected and tested by a person competent to do so, providing an appropriate BS7671 electrical installation certificate on completion.

**Proposed Replacement Utility Room at  
Eyton Court, Eyton, HR6 0AG  
FLOOR PLAN, SECTION & NOTES  
Scale 1:50 January 2013 Dwg No EC-3**

**PAUL TITLEY  
Architectural Consultant**  
New Cottage, Upper Common, Eyton  
Leominster, Herefordshire. HR6 0AQ  
Tel: 01568 615507

