



**ALLAN MOSS ASSOCIATES LTD**

Environmental Planning and Landscape Design

**PROPOSED HEDGEROW TRANSLOCATION TO  
IMPROVE EASTERLY VISIBILITY FROM  
THE C1208 ONTO THE B4348  
HEREFORDSHIRE**

**LANDSCAPE REPORT**

Prepared for:

Penoyre Trust

Prepared by:

Allan Moss Associates Ltd  
March 2017

## **1.0 INTRODUCTION**

- 1.1 The Penoyre Trust is seeking planning permission to translocate a 49m section of hedgerow to improve easterly visibility from the C1208 onto the B4348. Allan Moss Associates Ltd has been appointed as the landscape consultant to the project.
- 1.2 This Landscape Report provides an evidence base to inform the decision making process from a landscape character perspective.
- 1.3 The site was visited in March 2017 for the purpose of preparing this report.

## **2.0 SUMMARY OF PROPOSED DEVELOPMENT**

- 2.1 Easterly visibility at the junction of the C1208 onto the B4348 is currently adversely affected by a bulge in a field boundary hedgerow and associated hedge bank adjacent to the B4348 as illustrated on the existing site plan at Appendix A.
- 2.2 The applicant is seeking planning permission to remove this bulge by translocating the hedgerow to a new position behind the visibility splay as illustrated on the proposed site plan at Appendix A. This will also enable the hedge bank to be straightened out.
- 2.3 A method statement for the proposed hedgerow translocation also forms part of the planning application documentation.

## **3.0 LANDSCAPE BASELINE**

- 3.1 The application hedge is illustrated in the photographs at Appendix B. It has already been coppiced in an attempt to improve visibility, but further improvement to visibility is still needed to satisfy Highway Authority requirements.
- 3.2 It forms part of a longer length of hedgerow on the south-eastern side of the B4348. There is also a hedgerow on the north-western side of the road as illustrated in the photographs. All these roadside hedgerows are tightly clipped.
- 3.3 The Herefordshire Landscape Character Assessment classifies the application site as falling within the Principal Timbered Farmlands landscape type, where field boundary hedgerows are one of the primary landscape characteristics.
- 3.4 The 1<sup>st</sup> Edition OS map of 1887 at Appendix C suggests that there probably was a hedgerow field boundary in this location at that time, containing several trees. The OS map of 1974 indicates road verges either side of the junction which do not feature on the 1887 map and a slight change to the garden boundary at Harewood-Turn which may have resulted from highway improvements.

- 3.5 The main receptors with views of these roadside hedgerows are motorists travelling along the B4348. There are no pedestrian footways. There are also potential views from Harewood-Turn as illustrated in Photograph 1.

#### **4.0 LANDSCAPE VALUE AND LANDSCAPE SUSCEPTIBILITY**

- 4.1 Given that field boundary hedgerows are a key characteristic of the local landscape, the application hedge does have value at a local level. However the proposal is to relocate the hedge to a new position rather than to permanently remove it. Its landscape value will therefore be retained once it becomes established in its new position.
- 4.2 Landscape susceptibility (ie. the ability of a landscape to accommodate change without undue negative consequences) is dependent on the nature of the change that is proposed. In this case, although the hedge will have to be relocated to a new position behind the visibility splay, its contribution to the character of the local landscape will be maintained once it becomes established in its new position. In such circumstances landscape susceptibility to the proposed change must be low.

#### **5.0 MAGNITUDE OF LANDSCAPE EFFECT**

- 5.1 The length of hedgerow affected by the proposed translocation is approximately 49m. The area affected by the proposed change is very localised and the duration of the effect would be short term until the hedge becomes established in its new position. The hedgerow has already been coppiced, so it would take time to regrow in any case even if it was not moved.

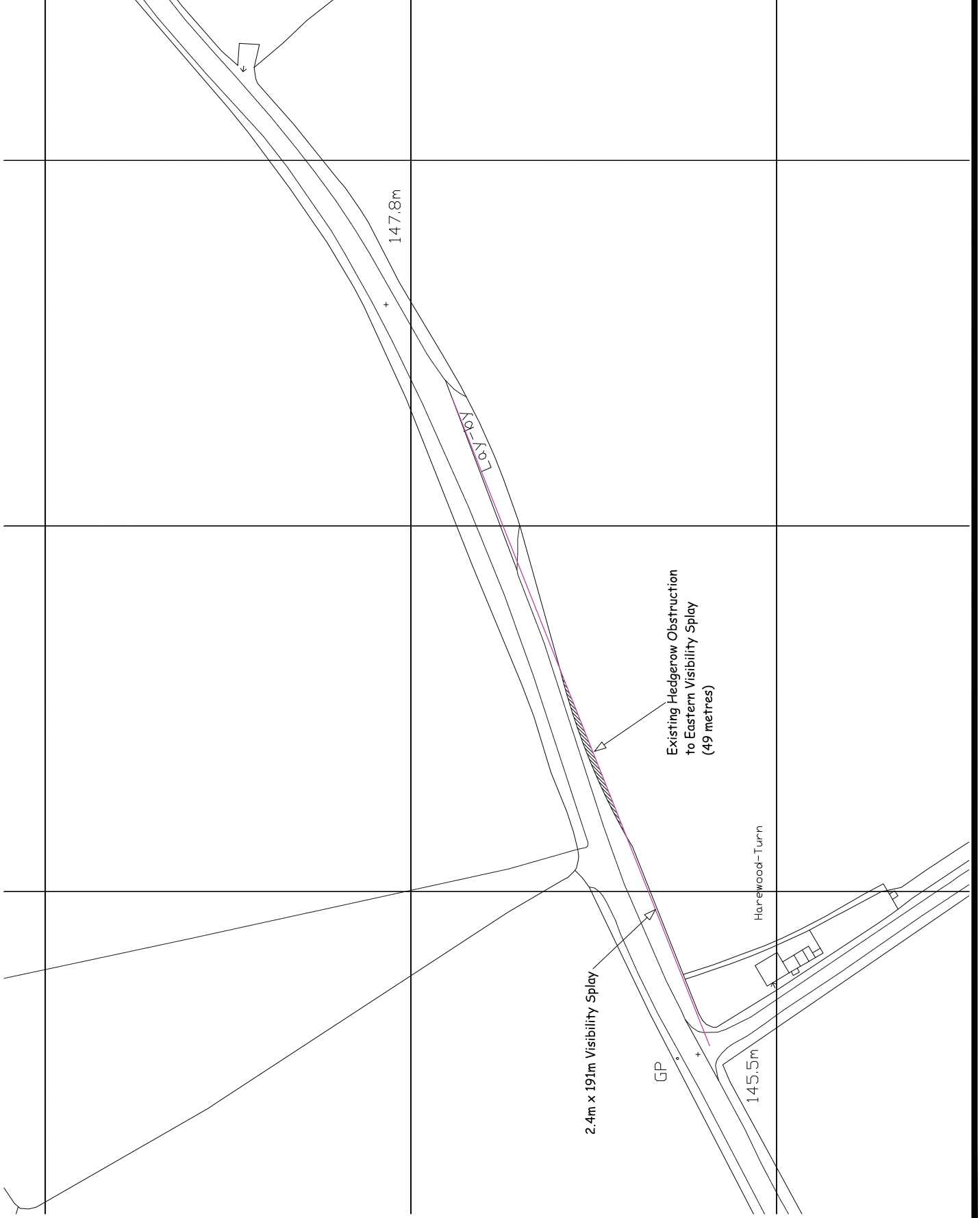
#### **6.0 OVERALL LEVEL OF LANDSCAPE EFFECT**

- 6.1 Although the application hedge is a characteristic landscape feature that does make a contribution to the character of the local landscape the proposal only involves its relocation by a few metres to a position behind the visibility splay. Although there would be a short term effect on the character of the immediate locality whilst it becomes established in its new position there would be no permanent adverse effect on landscape character.
- 6.2 The overall level of landscape effect is therefore considered to be negligible.

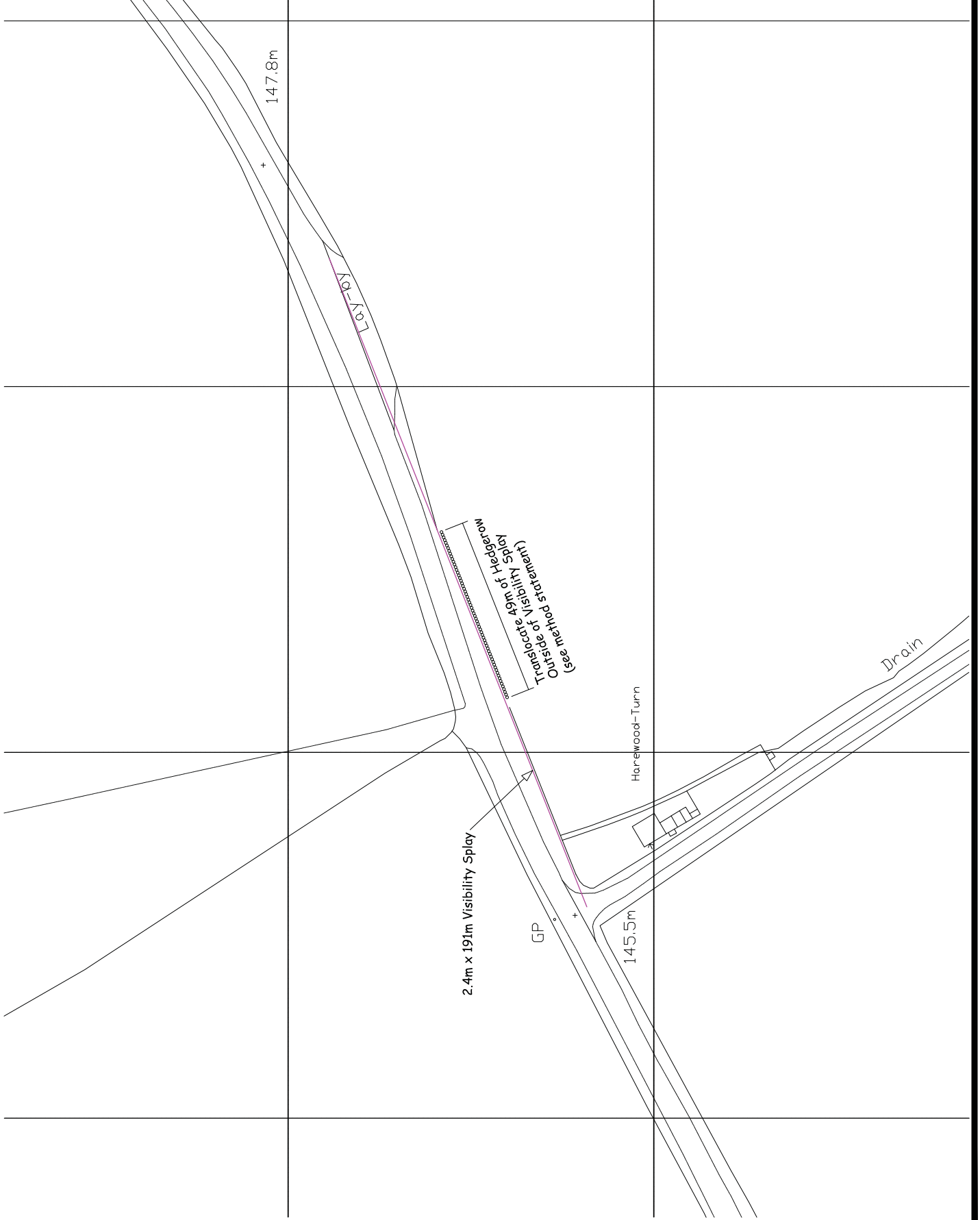
**Allan Moss BA (Hons), BPI, MRTPI, Dip LA, CMLI  
March 2017**

## **APPENDIX A**

### **Existing and Proposed Site Plans (Not to Scale)**



CLIENT	Penoyre Trust Hardwicke Court Hay on Wye Herefordshire HR3 5HA
JOB TITLE	Eastern Visibility Splay Improvement from C1208 to B4348
DWG. TITLE	Existing Site Plan
SCALE	1=500
DRN	PT
DWG. NUMBER	PT702
DATE	Mar 17
REV	-



CLIENT	Penoyre Trust Hardwicke Court Hay on Wye Herefordshire HR3 5HA
JOB TITLE	Eastern Visibility Splay Improvement from C1208 to B4348
DWG. TITLE	Proposed Site Plan
SCALE	1=500
DRN	PT
DWG. NUMBER	PT703
DATE	Mar 17
REV	-

## **APPENDIX B**

### **Photographs 1 to 4**





**Photograph 1: View from north-east along B4348.**



**Photograph 2: View from south-west along B4348.**



**Photograph 3: Close up view along the application hedge.**



**Photograph 4: View from junction of C1208 with B4348.**



## **APPENDIX C**

### **Historical Maps**

