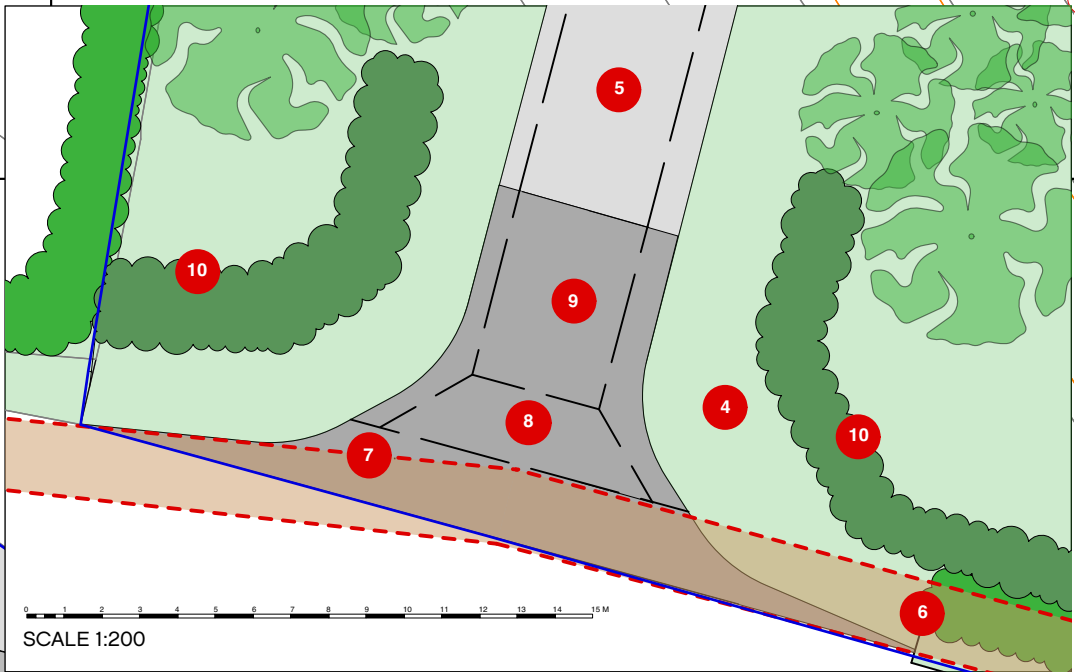
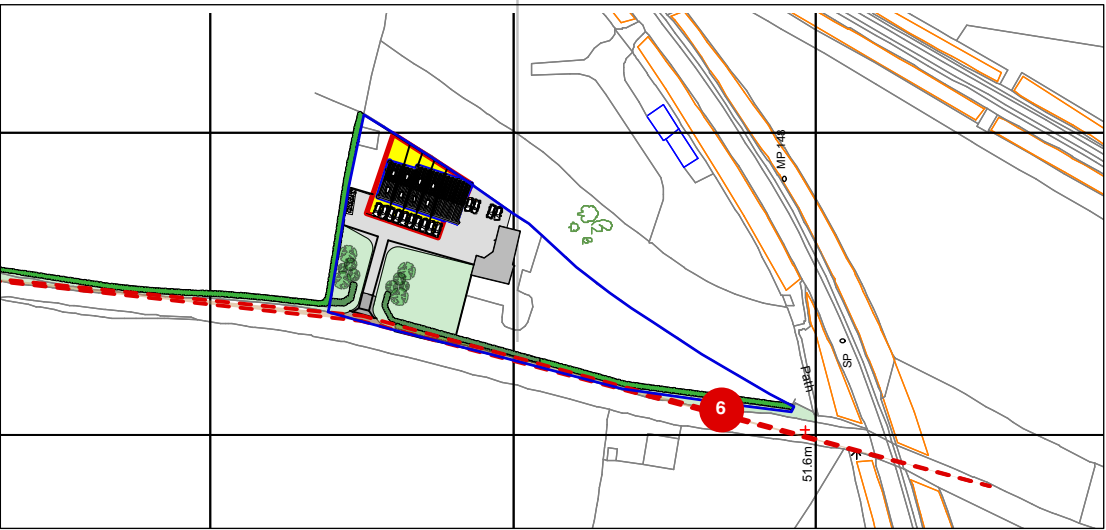


SPECIFIC NOTES

- | ITEM | NOTE   |
|------|--|
|      | SITE AREA 0.064 HA   |
|      | LAND IN APPLICANTS OWNERSHIP                                     |
|      | AMENITY AREA 0.032 HA  |
|      | BUILDING. AREA 0.032 HA  |
|      | COVERED CYCLE STORE  |
|      | OFFICE PARKING   |
|      | NEW SOFT LANDSCAPING TO REDUCE DRIVE AREA                        |
|      | 4.5M WIDE DRIVE  |
|      | IMPROVED VISIBILITY TO THE NORTH                                 |
|      | 2M SET BACK OVER WIDE OF OPENING                                 |
|      | 2X2M VISIBILITY SPLAY  |
|      | BOUND SURFACE FOR FIRST 10M OF DRIVE                             |
|      | EXISTING HEDGEROW REPLANTED TO GIVE AT LEAST 3M VERGE TO HIGHWAY |
|      | DRIVE OPENING REDUCED AND POSITIONED TO GIVE MAXIMUM VISABILITY  |



Revision	Date	Amendment
A	18.01.18	IMPROVED VISABILITY. NARROWED DRIVE. CYCLE STORE
B	30.01.18	4M WIDE DRIVE CHANGED TO 4.5M WIDE