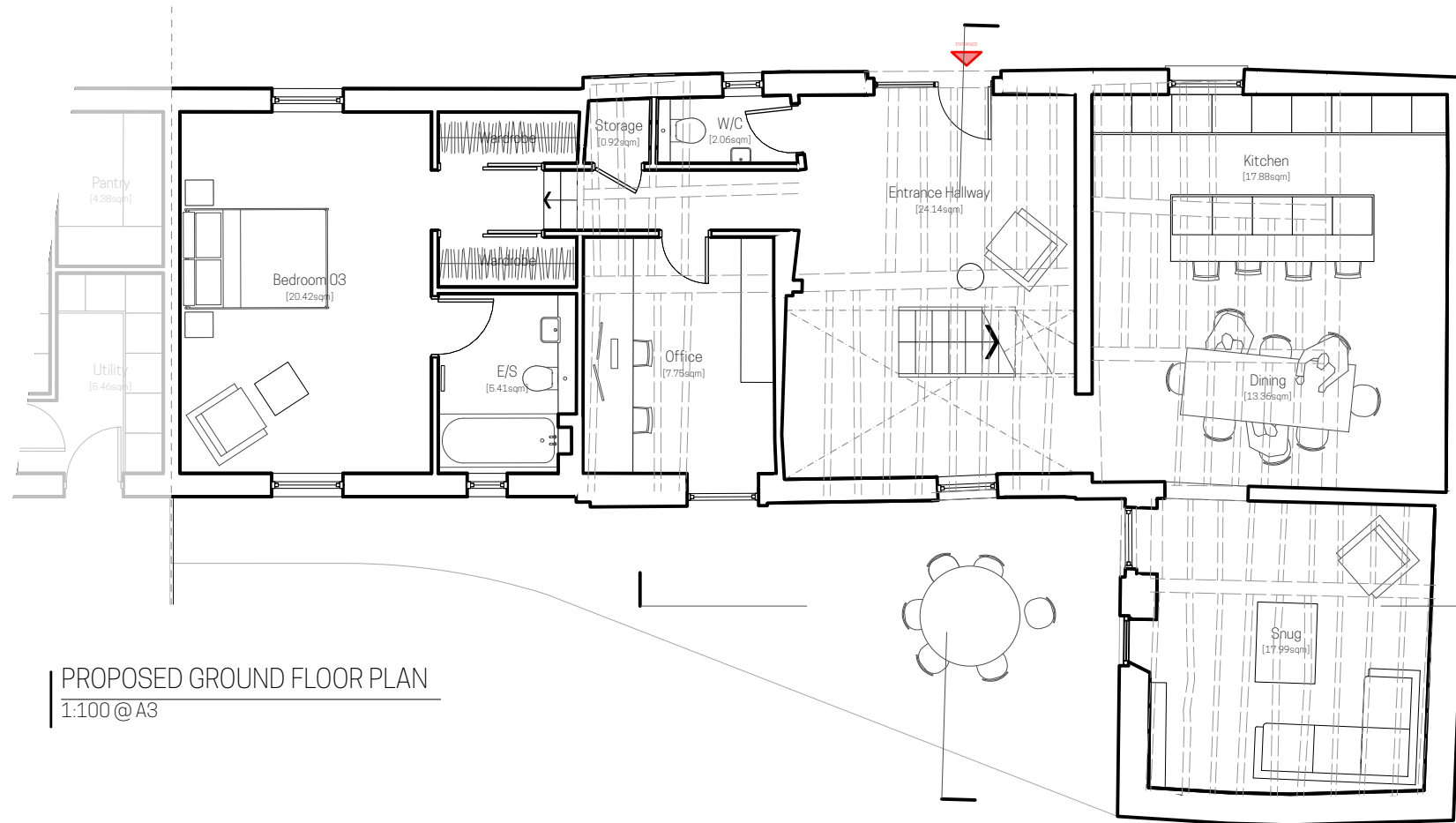
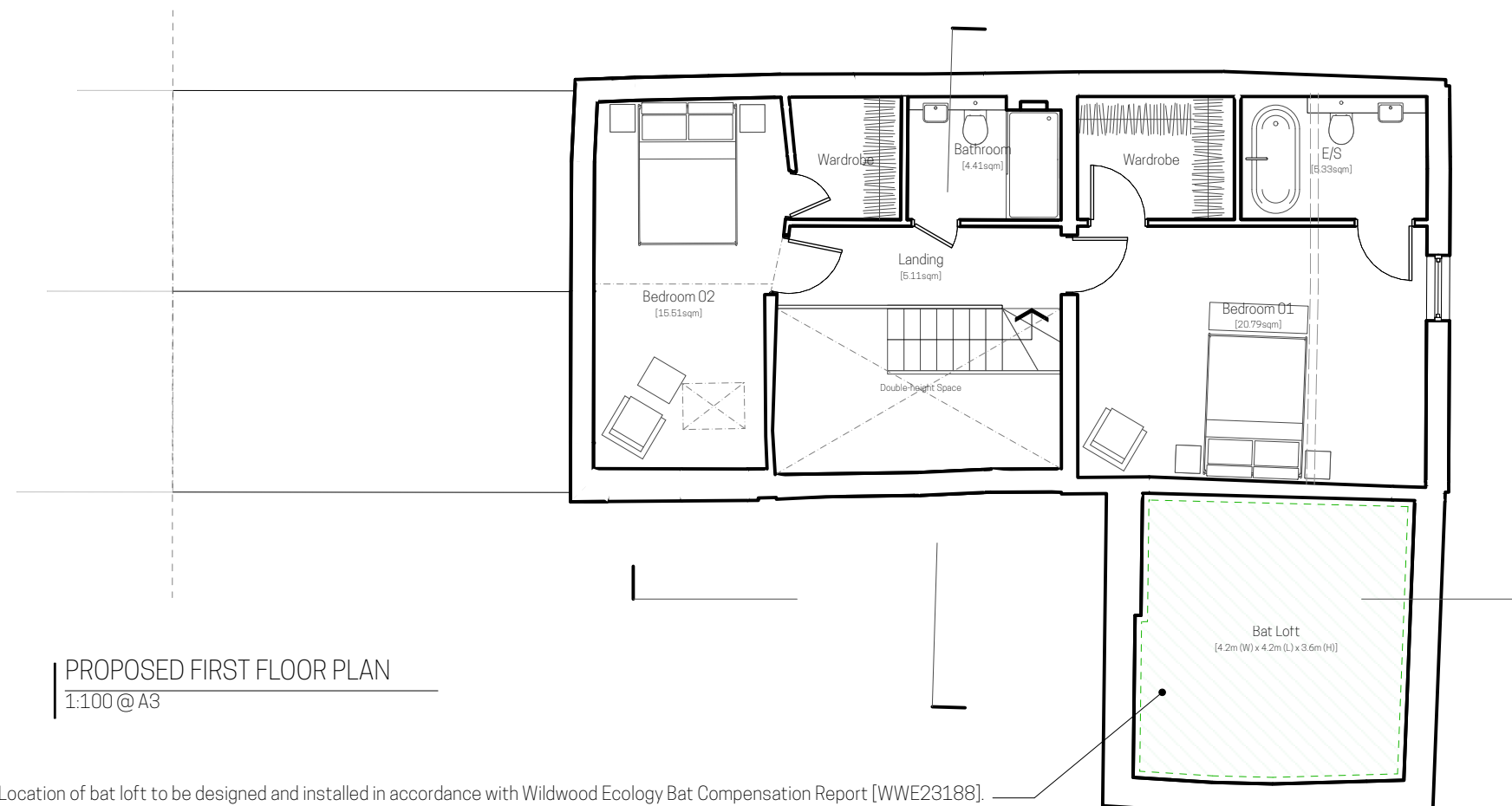


DESCRIPTION:	DATE	REV:
General drawing development.	27.06.22	A
General drawing development.	05.08.22	B
General drawing development.	10.08.22	C
General drawing development.	03.10.22	D
Amendments further to C80 comments received 19.01.23.	15.06.23	E
Amendments further to meeting with PO + C80 on 22.05.23.	10.07.23	F
Amendments further to meeting with PC on 12.12.23.	17.01.24	G
Amendments further to meeting with PC on 18.01.24.	06.02.24	H
General drawing development.	05.03.24	I
Amendments further to C80 comments and requests.	12.03.24	J



PROPOSED GROUND FLOOR PLAN
1:100 @ A3



PROPOSED FIRST FLOOR PLAN
1:100 @ A3

Location of bat loft to be designed and installed in accordance with Wildwood Ecology Bat Compensation Report [WWE23188].



KODA
architects and historic building consultants

E: info@kodaarchitects.com
T: 01432 805459 W: www.kodaarchitects.com

CLIENT: CALLOW DEVELOPMENTS LTD.
SITE ADDRESS: Manor Farm, Monkland Herefordshire, HR6 9DB.

DWG No: 1903 313
Date: MAY 2022
Rev: J
Scale: 1:100 @ A3
Drawn by: FH
Status: PLANNING
Drawing title: UNIT 03 / PROPOSED FLOOR PLANS