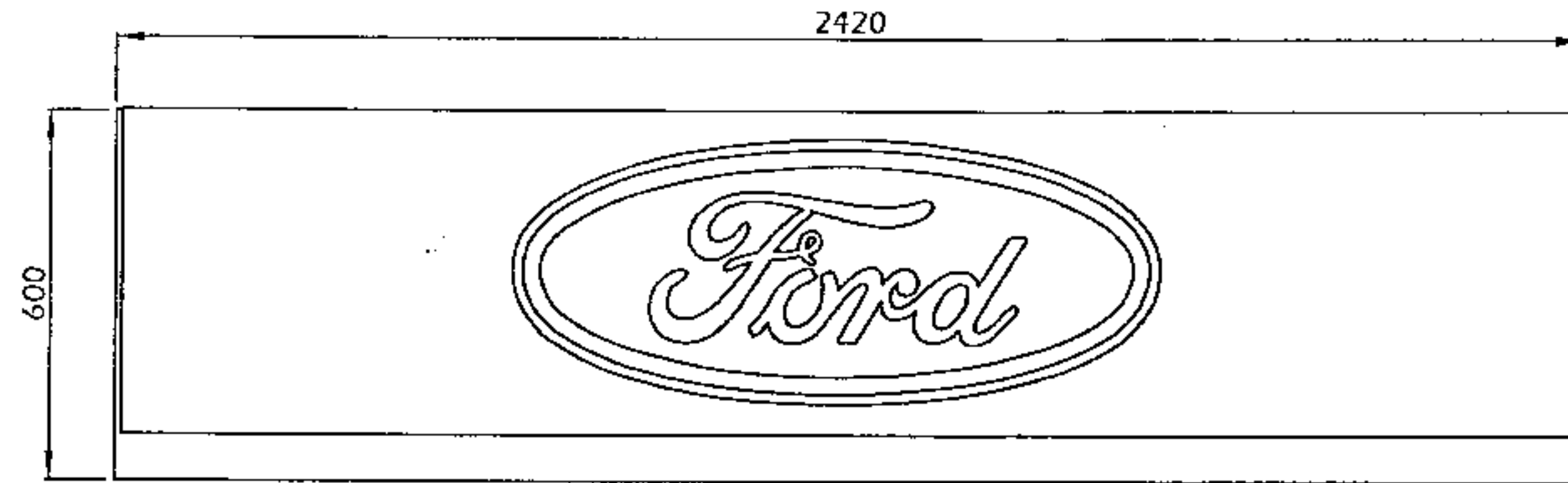


SIZE 3 BRAND CLIP FRONT VIEW
SCALE 1:15



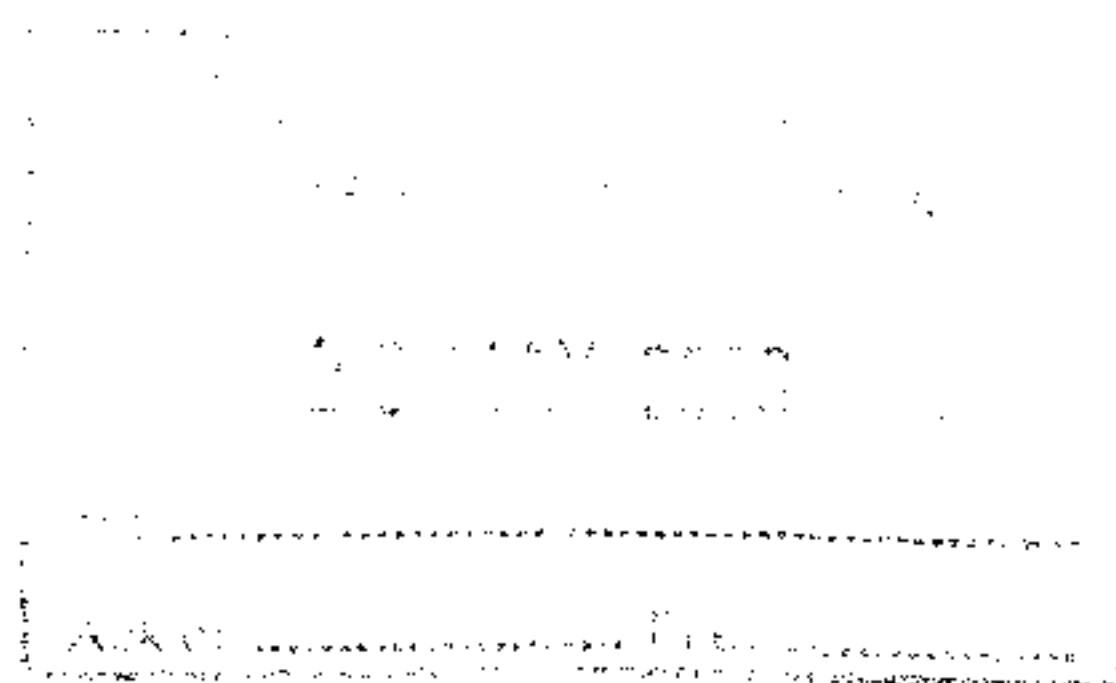
O/A SIZE OF SIGN 2420mm x 600mm
O/A WEIGHT OF SIGN 31.5Kg

CONSTRUCTION

MAIN FACE PANELS ARE CONSTRUCTED FROM RADIUS 3mm ALUMINIUM PANELS PVDF SPRAYED FORD SILVER (RAL 9006). THE FACE PANELS ARE FIXED TO A 3mm ALUCOBOND BACK PANEL SPRAYED FORD BLUE (RAL 270 30 35). BRAND CLIP FACE PANELS ARE TO BE APERTURE CUT TO ACCEPT A SIZE 2 FORD BUTTON OVAL FORMED FROM 3mm BLUE ACRYLIC WITH A CHROME OUTLINE. FASCIA IS INSTALLED BY WAY OF BRACKETS TO A SUITABLE WALL FIXED LADDER SYSTEM.

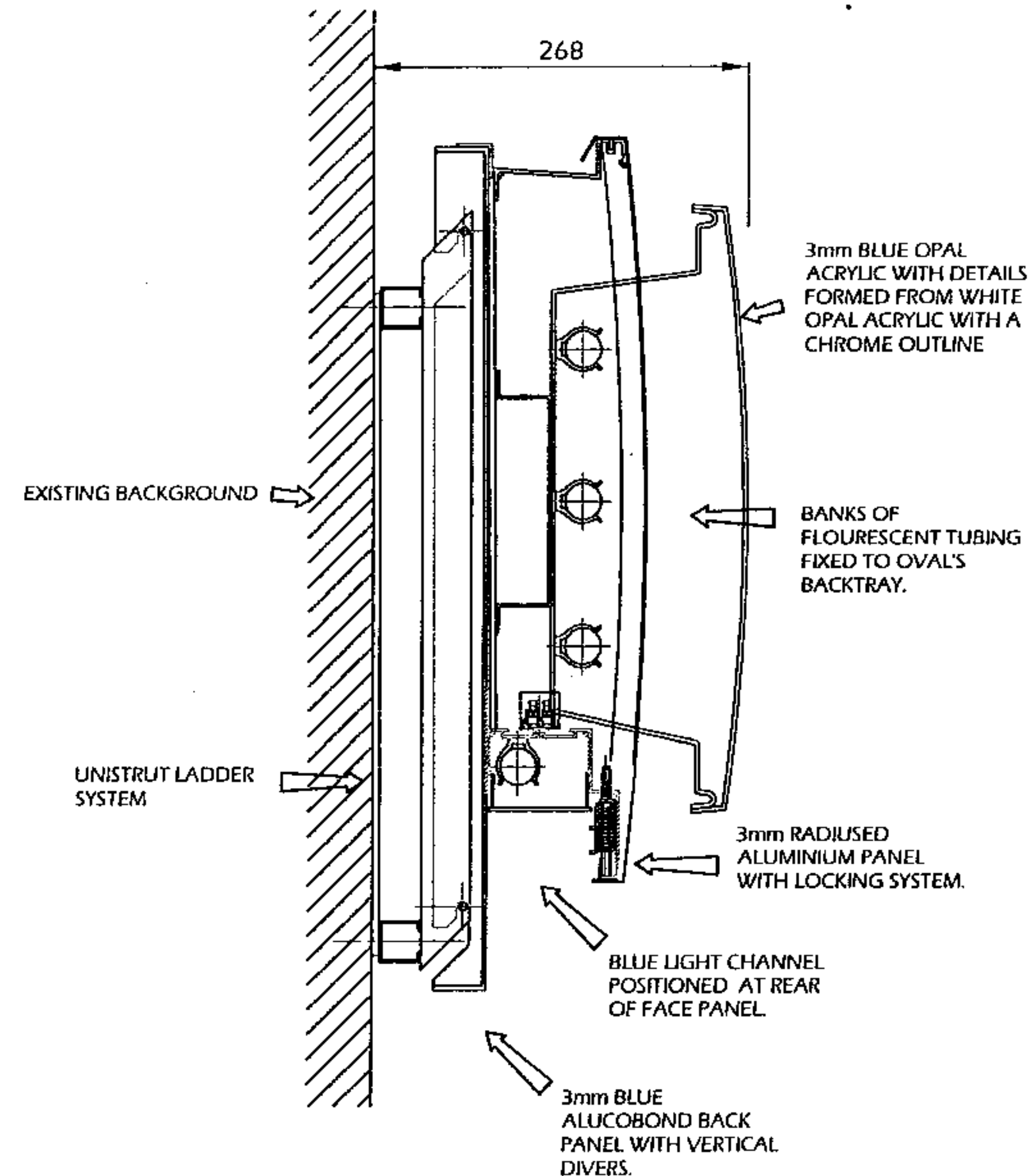
ILLUMINATION

BRAND CLIP BUTTON LOGOS ARE INTERNALLY ILLUMINATED BY BANKS OF FLOURESCENT TUBING. CLIP IS ALSO ILLUMINATED VIA A BLUE LIGHT CHANNEL POSITIONED BEHIND THE LOWER REAR SECTION OF THE FACE PANELS. TOTAL ELECTRICAL LOADING:- 1 AMP



SIDE VIEW THROUGH SECTION
SCALE 1:5

NC06/1637/A



Notes

Amendments

No.	Description/Date	Date



ARLUX (UK)

Units 7-9 Tien Business Centre
Sutton Coldfield, Birmingham B40 1JL
Warwick, CV34 9ER England
mail@arlux.co.uk

Client

FORD

Project

THROUGH SIDE SECTION

Drawn: A.J.E Date: 01.03.06

Approved: Date:

Scale: AS STATED @ A3 Revision: A

Dwg. No: FOR/xxx/001 Sheet: 1 of 1

FOR/xxx/001 1 of 1

SCALE APPLIES TO ALL DIMENSIONS UNLESS OTHERWISE SPECIFIED

© 2006 ARLUX (UK)

THIS DRAWING IS THE PROPERTY OF ARLUX (UK) AND IS TO BE USED BY THE CLIENT FOR THE PROJECT ONLY. ANY REPRODUCTION OR ALTERATION OF THIS DRAWING WITHOUT THE WRITTEN PERMISSION OF ARLUX (UK) IS STRICTLY PROHIBITED.