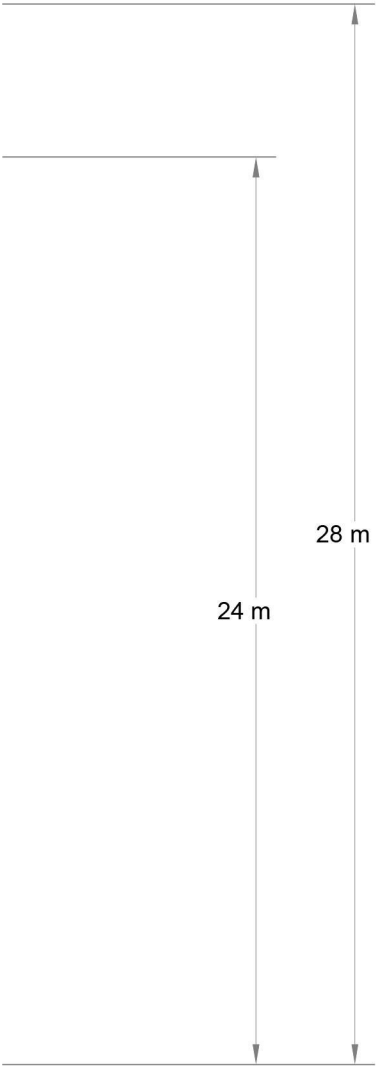
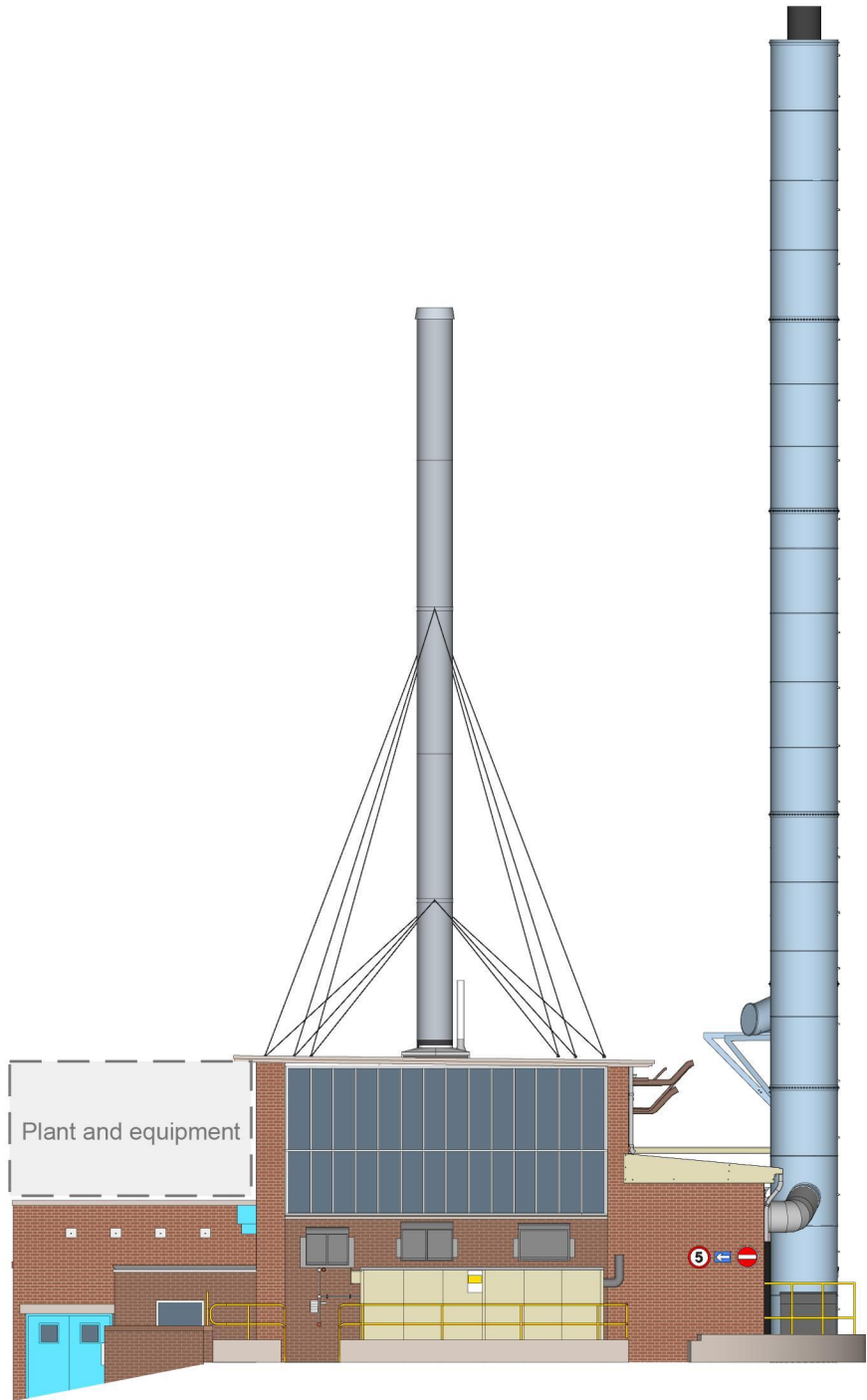
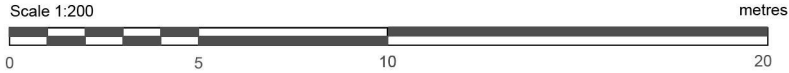


P:\Shared\PESL\Consulting - Documents\1_P\Projects\MON.004.b - Martbrook MCP boiler support3_Working docs\A Draft working versions\Figures\layouts\Submission 03-2021\Planning application\boiler house elevations (2021 late) FINAL [Figure 3] Rev 1 layout



Notes

- i) Guy lines shown are indicative.
- ii) Target design height for new stack is 24 metres Above Ground Level (AGL).
- iii) Maximum design height for new stack for planning is 28 metres AGL.



Drawing title
Figure 3.8: Building elevations south - proposed

Date	March 2021
Revision	Final (Rev 1)
Scale	1:200 @ A3
PESL No.	MON.004.b



Project
Planning application for
new boiler stacks

Client
Mondelez UK Production Ltd