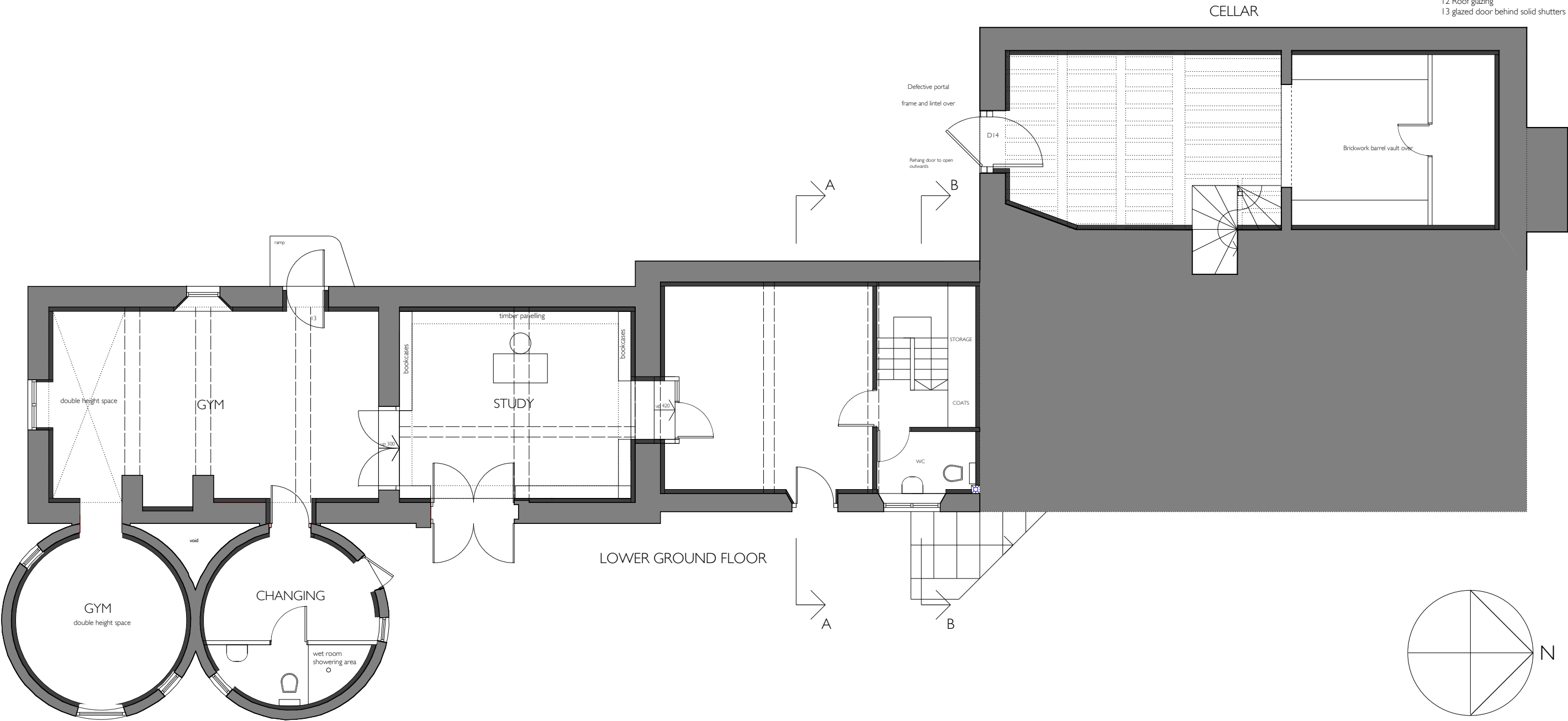


- Materials
- 1 Rubble stone
 - 2 Dressed stone quoins
 - 3 Red facing brick
 - 4 Exposed timber framing
 - 5 White painted timber doors and windows
 - 6 Unpainted timber doors and windows
 - 7 Natural slate roofing
 - 8 Leadwork
 - 9 new opening
 - 10 existing opening
 - 11 White painted cowls to hop kilns with integral glazing to top light interiors
 - 12 Roof glazing
 - 13 glazed door behind solid shutters



Revisions

13.06.16

Proposals for Oast House and Barn revised

Proposed Alterations

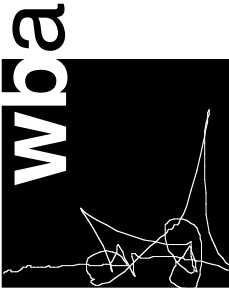
Lower Castleton Westside

Lower Ground Floor/Basement plan as proposed

Drawing no. **99242.P11A**

Scale 1:100 at A3

June 2016



warren benbow architects

21-22 Mill Street Kington
Herefordshire HR5 3AL

01544 239 136

www.warrenbenbow.com
Email@warrenbenbow.co.uk