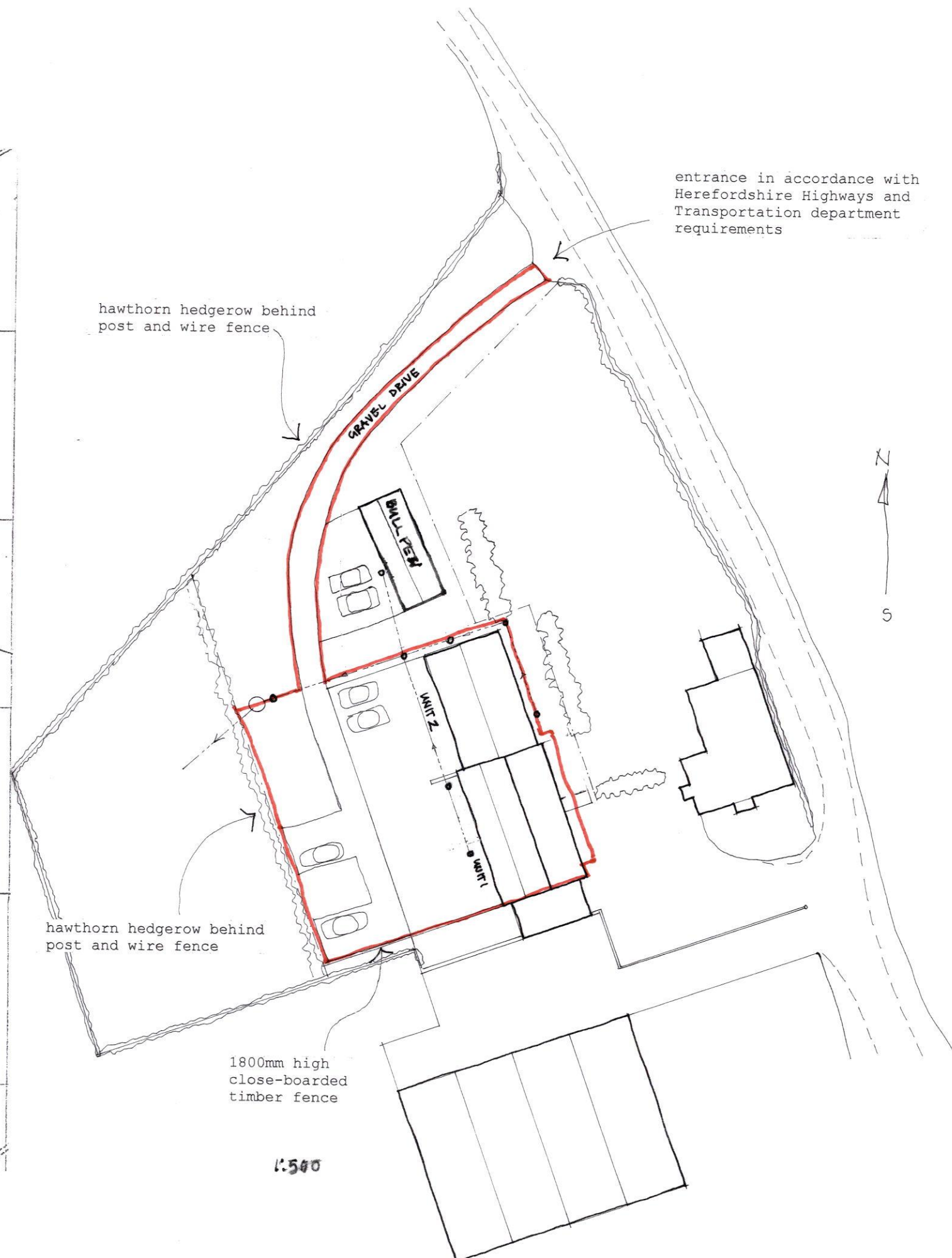
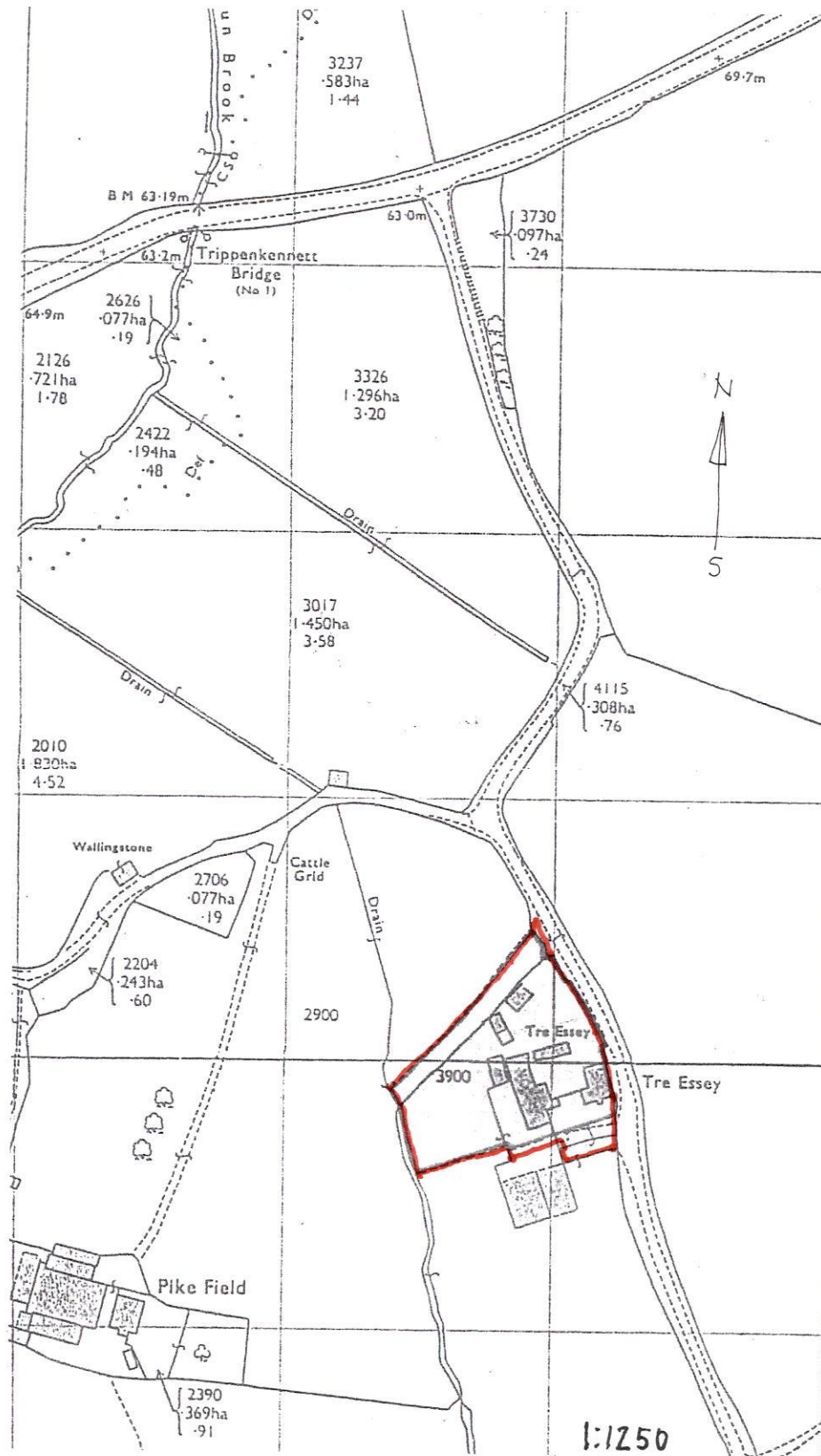


HEREFORDSHIRE COUNCIL  
PLANNING SERVICES  
DEVELOPMENT CONTROL  
28 JUN 2023  
To: \_\_\_\_\_  
Ack'd: \_\_\_\_\_  
File: \_\_\_\_\_



HOLIDAY LETS  
TRE-ESSEY FARM  
THREE ASHES  
HR2 8NA

UNITS 1 AND 2 TO ALLOW  
RESIDENTIAL ACCOMMODATION

MAY 23 5017:25  
SITE LOCATION 1:1250 @A3  
BLOCK PLAN 1:500 @A3

Geoff Jones : Architect  
53 Broad Street Ross-on-Wye  
Herefordshire HR9 7DY  
Phone 01989 769073  
geoffjones@geoffjonesarchitect.co.uk