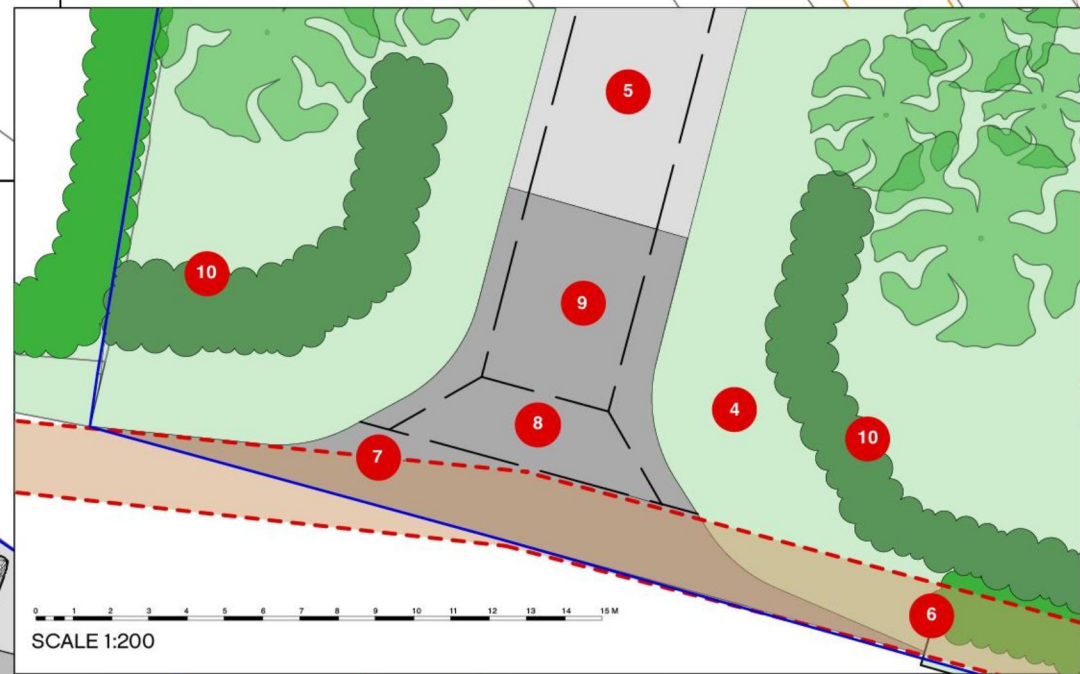
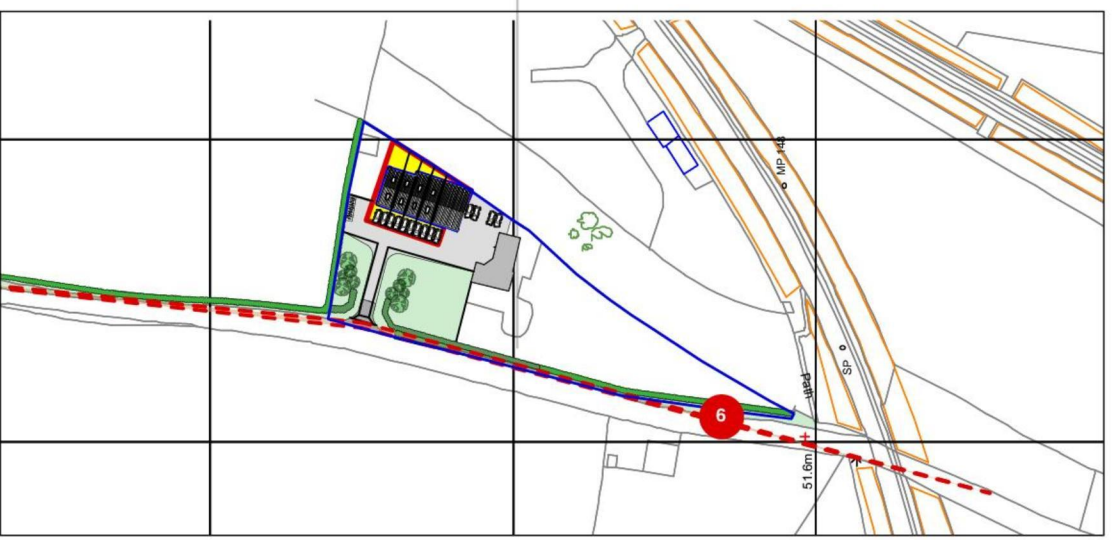


SPECIFIC NOTES

- | ITEM | NOTE |
|------|--|
| | SITE AREA 0.064 HA |
| | LAND IN APPLICANTS OWNERSHIP |
| | AMENITY AREA 0.032 HA |
| | BUILDING. AREA 0.032 HA |
| | COVERED CYCLE STORE |
| | OFFICE PARKING |
| | NEW SOFT LANDSCAPING TO REDUCE DRIVE AREA |
| | 4M WIDE DRIVE |
| | IMPROVED VISIBILITY TO THE NORTH |
| | 2M SET BACK OVER WIDE OF OPENING |
| | 2X2M VISIBILITY SPLAY |
| | BOUND SURFACE FOR FIRST 10M OF DRIVE |
| | EXISTING HEDGEROW REPLANTED TO GIVE AT LEAST 3M VERGE TO HIGHWAY |
| | DRIVE OPENING REDUCED AND POSITIONED TO GIVE MAXIMUM VISABILITY |



Revision	Date	Amendment
A	18.01.18	IMPROVED VISABILITY. NARROWED DRIVE. CYCLE STORE