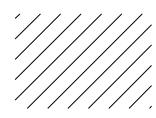
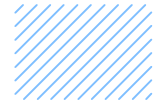


External Defects - Hatch Key:

General exterior material defects are noted in this drawing using the following hatches:



Repoint open jointed brickwork areas, with associated percentages. (Note - this should be assumed to have 100% open joints unless otherwise stated).



Repoint open jointed entablature or cornice, between stonework.



Repoint open jointed copings, removing vegetation growth where present in places.



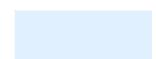
Repair and re-point cracks in masonry of stone or brickwork.



Hand clean staining and salt deposits to brick and stonework.



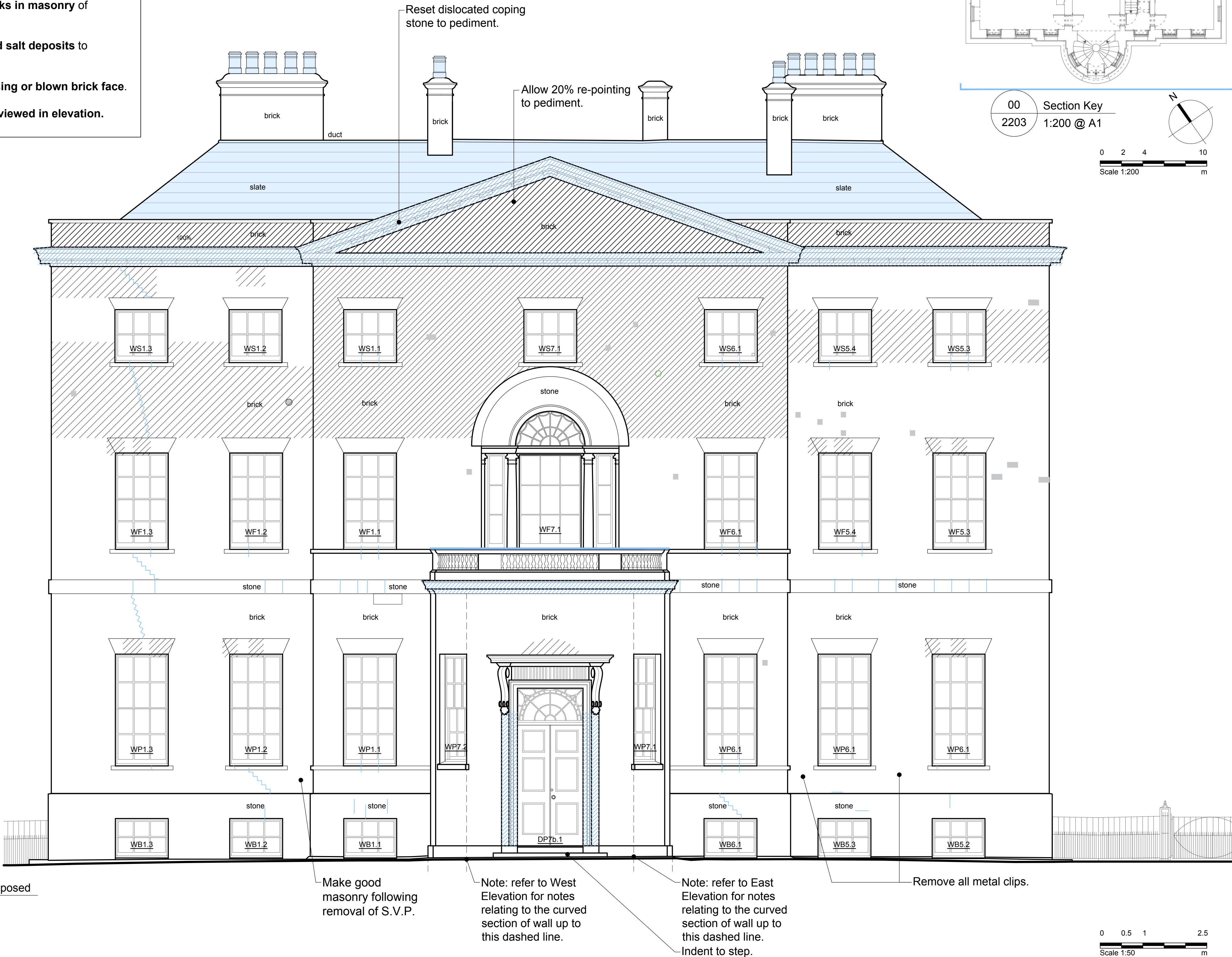
Replace damaged, missing or blown brick face.



Proposed to be added, viewed in elevation.

Drawing Specific Notes:

- Repairs to voussoirs of flat gauged brick heads to include re-pointing of false joints where present, in a soft lime mortar as per Architect's specification.
- Where fixings or fittings are removed from the external facade, any remaining holes or openings are to be made good to match the surrounding surface materials.
- Allow to repair joint beneath all stone cills and projecting stone features.
- Rake out junction between timber window frame, masonry, reveal and ... with ... sand mastic, to all windows.



Notes

1. Any dwg format drawing is to be read in conjunction with and at the scale of the accompanying pdf.
2. For status 'C' (Construction) drawings: All dimensions are to be checked on site by the contractor, scaling is for Local Authority purposes only. Unless otherwise indicated, all dimensions are in millimeters. All information on this drawing is to be read in conjunction with the relevant Donald Insall Associates specification and trade contractors' drawings and information by specialists.
3. In the event of any query, please contact us immediately.
4. This drawing may contain survey information by others and is to be used solely for the purposes for which it was issued.
5. These are uncontrolled documents issued for information purposes only. If you have any queries regarding the drawings, please contact DIA immediately. Please note DIA cannot be held responsible for any errors arising from changes made to an uncontrolled dwg file.

© 2016 DONALD INSALL ASSOCIATES LTD

Drawing Status			
F	Feasibility	B	Building Control
S	Sketch Design	D	Developed Design
P	Planning	M	Measurement
		T	Tender
		C	Construction
		R	Record

C	15-06-17	MXV	SM	Elevation general updates
B	07-12-16	MXV	SM	Drawing number changed from 2203 and updates
A	15-11-16	MXV	SM	Updates
0	08-11-16	MXV	SM	Initial Issue

Rev	Date	Dwn	Auth	Revision
-----	------	-----	------	----------

Moccas Court
Herefordshire

South External Elevation
As Proposed

Project	MCH01	No	2001
Scale (A1)	1:50	Status	S
		Revision	C

Donald Insall Associates
Chartered Architects and Historic Building Consultants

Bridgegate House, 5 Bridge Place, Chester CH1 1SA
(+44) 01244 350 063
chester@insall-architects.co.uk

01 South External Elevation - As Proposed
2001 1:50 @ A1