

ROOF

Lightweight roofing tile system.
Glazed panels over stairwells.
PV panels adjacent stairwells (Location subject to orientation).
PVC fascias and gutters.

WALLS

Insulated acrylic through colour render system.
Lightweight panels/ contrasting render.
Glazed balconies and infill panels.
Fully glazed stairwells.

CANOPIES

New entrance canopies to ground floor maisonettes.
Curved feature canopy to communal entrances.

WINDOWS & DOORS

New double glazed PVC windows, frames grey externally and white internally.
New front and rear entrance door to ground floor maisonettes to Secure by Design standards.
New entrance doors to upper floor maisonettes.

Opening lights are to be confirmed on site with contractor prior to manufacture.
Window dimensions are indicative for window tender only.
All sizes are to be checked on site by window manufacturer prior to manufacture.
Ventilation requirements to be confirmed by window manufacturer following site survey.

S / 101873 / FH



FRONT ELEVATION

GLAZED ROOF WINDOW WITH ALUMINIUM FRAMES. FRAME COLOUR: DARK GREY. RAL 7016.
PHOTOVOLTAIC ROOF PANELS.
ROOF: BRITMET SLATE 2000 LIGHT WEIGHT ROOFING SLATE PANELS. COLOUR: TITANIUM GREY.
METAL FLASHINGS & TRIMS COLOUR DARK GREY. RAL 7016.
FASCIA & SOFFITS: UPVC. COLOUR: DARK GREY. RAL 7016.
GUTTERS & DOWNPIPES: UPVC. COLOUR: BLACK.

TRESPA PANELS IN RIBBON WINDOW FRAME.
COLOUR: (GREY). IRON GREY.

EXTERNAL WALLS: INSULATED RENDER.
COLOUR: GREY. NATIONAL COLOUR SCHEME REF: S 6000-N.
COLOUR: PEACH. NATIONAL COLOUR SCHEME REF: S 0520-Y48R.
COLOUR: STANDARD WHITE.

WINDOWS TO MAISONNETTES: UPVC WINDOW FRAMES. COLOUR DARK GREY EXTERNALLY. RAL 7016. WHITE INTERNALLY.

BALCONIES: CLEAR TONGUED GLASS WITH POLYESTER POWDER COATED MILD STEEL DARK GREY FRAMES. RAL 7016. AND POLISHED STAINLESS STEEL TOP RAIL.

TRESPA PANELS IN RIBBON WINDOW FRAME.
COLOUR: (GREY). IRON GREY.

WINDOWS TO STAIRS: SINGLE PATENT GLAZING WITH ALUMINIUM FRAMES. FRAME COLOUR: DARK GREY. RAL 7016.

PREFABRICATED ENTRANCE CANOPIES TO MAISONNETTES. COLOUR: DARK GREY. RAL 7016.

TRANSLUCENT CURVED CANOPY TO COMMUNAL ENTRANCES WITH POLISHED STAINLESS STEEL SUPPORT STRUCTURE.

EXTERNAL WALLS: INSULATED RENDER.
COLOUR: GREY. NATIONAL COLOUR SCHEME REF: S 6000-N.

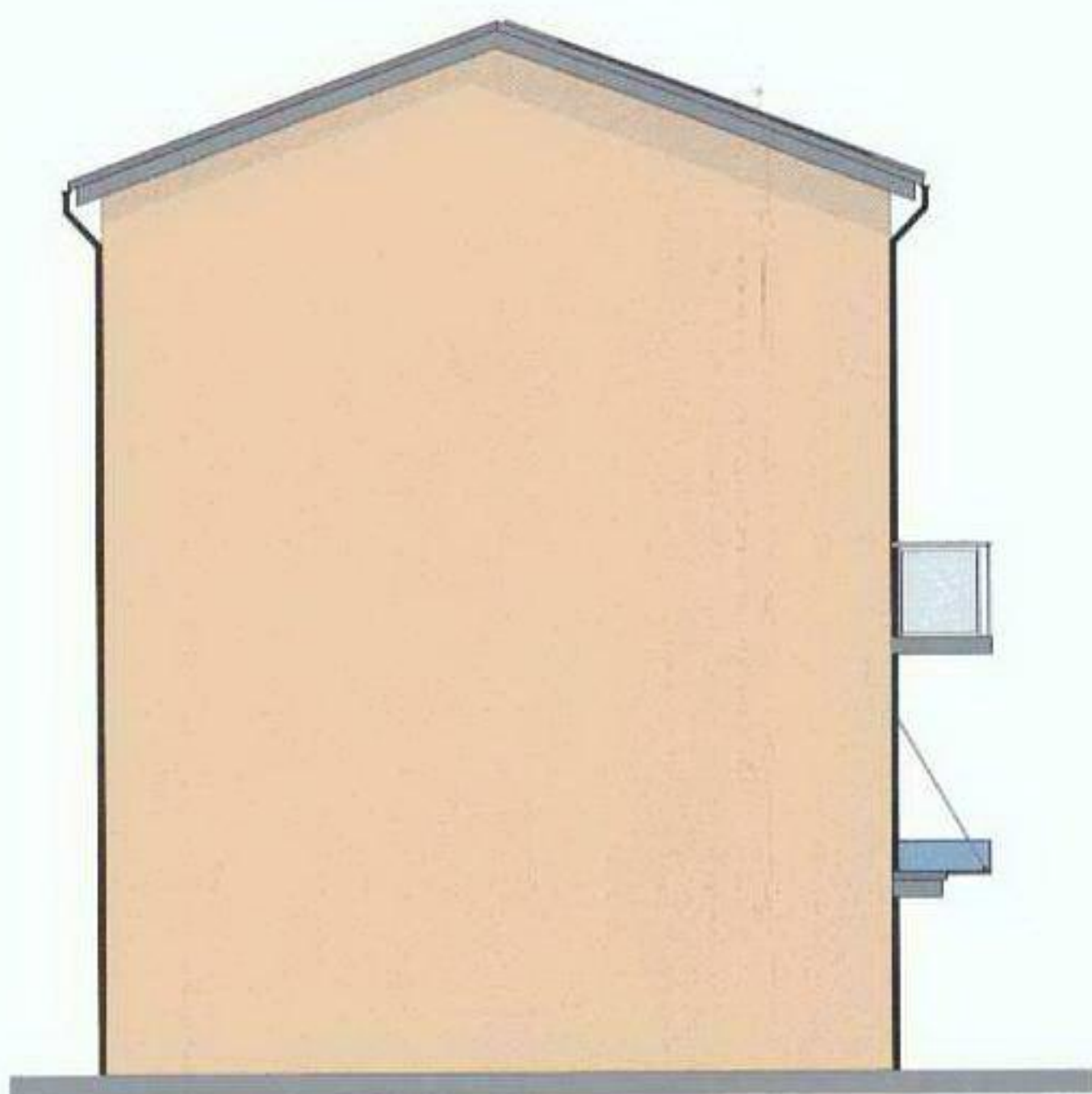


REAR ELEVATION

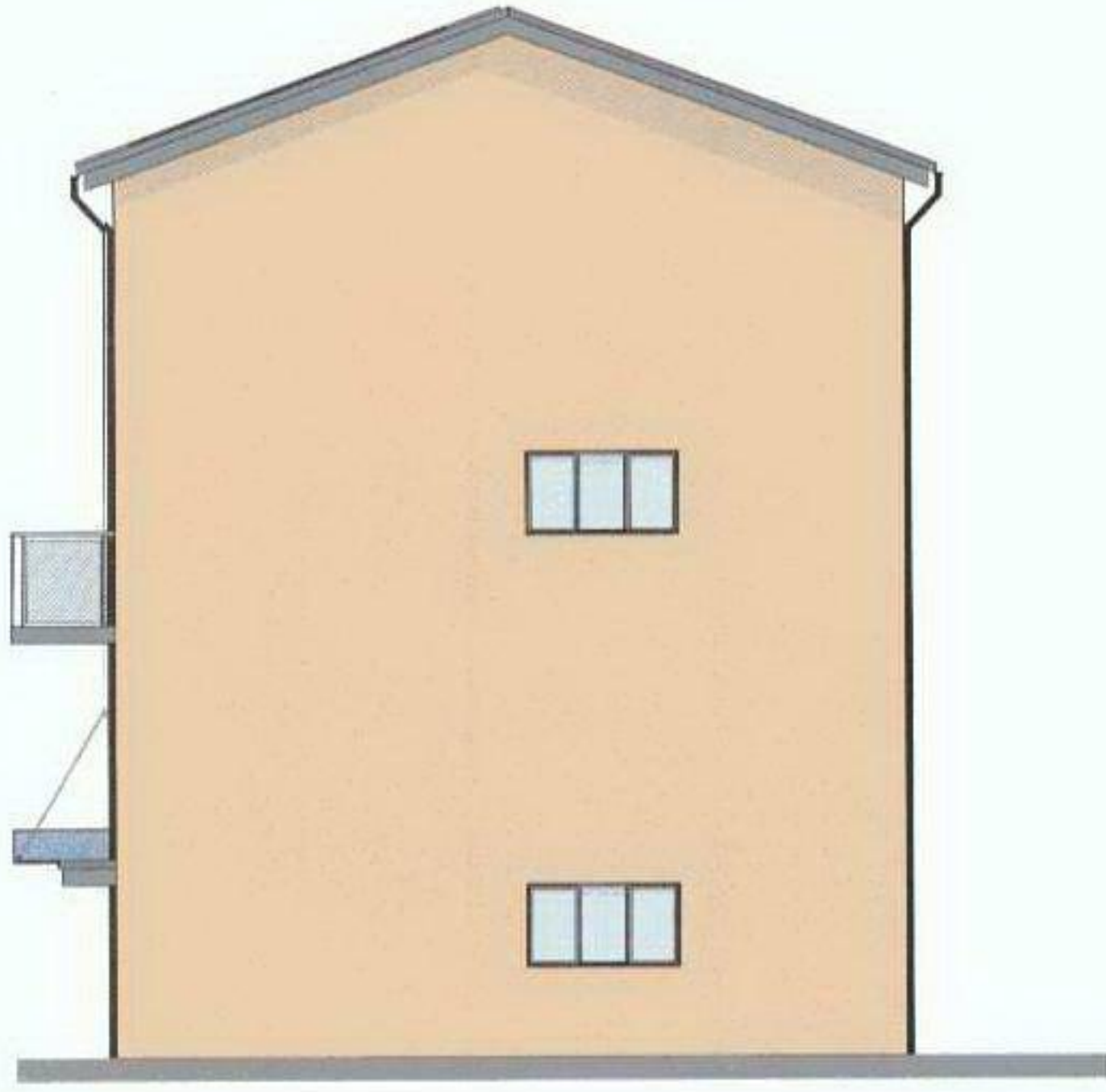
TRESPA PANELS IN RIBBON WINDOW FRAME.
COLOUR: (GREY). IRON GREY.

TRESPA PANELS IN RIBBON WINDOW FRAME.
COLOUR: (GREY). IRON GREY.

TRESPA PANELS IN RIBBON WINDOW FRAME.
COLOUR: (GREY). IRON GREY.



SIDE ELEVATION 1



SIDE ELEVATION 2



Rev.	Date	Description	Drawn	Check

WALKER TROUP ARCHITECTS
52 Lyndon Road
Sutton Coldfield
West Midlands B73 6BS
t: 0121 355 4040
f: 0121 355 0742
e: arch@walkertroup.co.uk

Contract
Tupsley & Moor Farm
Hereford

Sheet Title
Howard Court Proposed Elevations

Client
Bullock
Scale
1:100
Date
20/07/2010
Drawn By
LO
Checked By
SCO
Drawing Number
0940-104

