

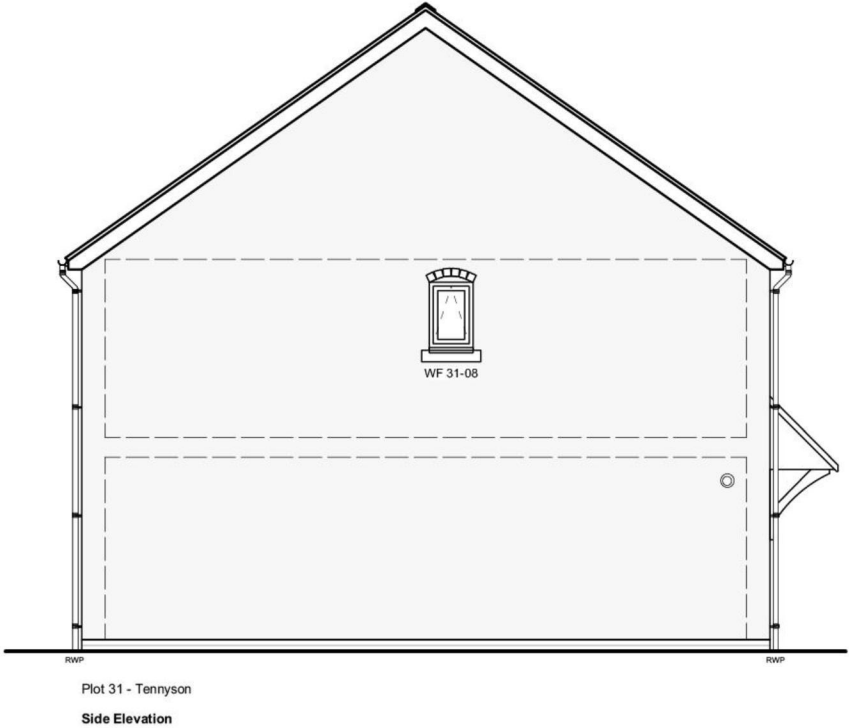
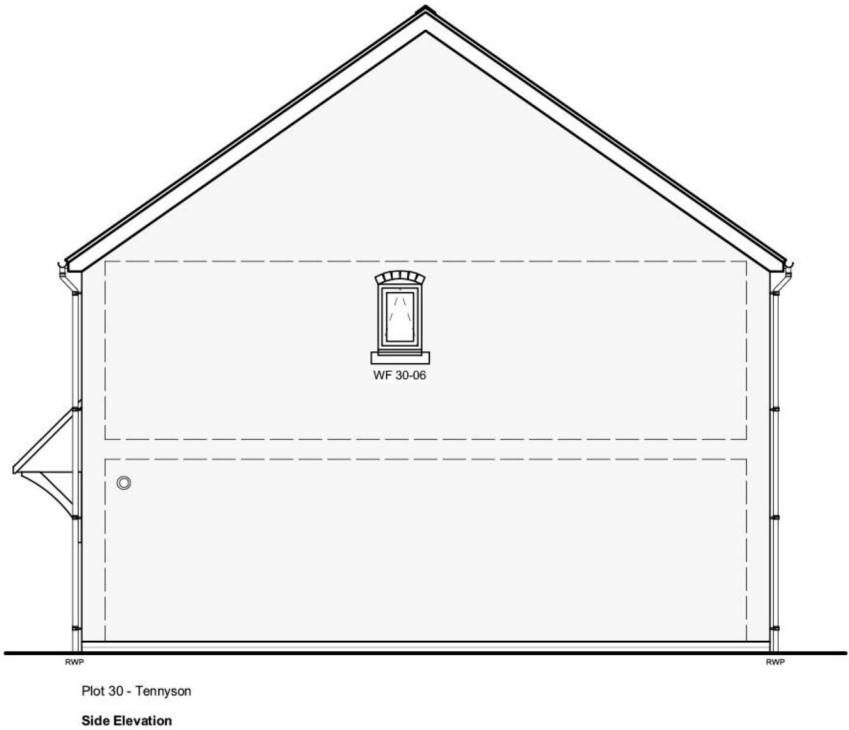
NOTES

This drawing is the copyright of Quattro Design Architects Ltd and should not be reproduced in whole or in part without written permission. Only figured dimensions to be used for construction. Check all dimensions on site. Any discrepancies are to be reported to the Architect as soon as possible.

REVISIONS

REV: DATE - DRAWN - CHECKED: NOTES

-: 20.02.17 - LW - RJF:
Drawing created.
Rev A: 17.08.17 - LW: Amendments to drawing following comments received from Shelley on 17.08.17.
Rev B: 30.05.17 - LW: Amendments to materials following SE at MFF comments received 30.05.18.



Key

- Silver Pearl Render
- Marley Eternit
- Concrete Plain Tile

- Window / Door Opening with hinges shown (example top hung window)
- Fixed Window Pane
- Stone Cill

- Elec. Meter Box
- Gas Meter Box
- (Meters to be painted the same colour as the facing to which its mounted upon)
- Rainwater Goods: Cast Iron Effect PVCU

- SVP
- Flue
- Extract Fan
- External Lighting

Please note that the following items are not shown:

Movement Joints - see engineers notes

Trickle Vents / Weepholes / Telescopic Vents - refer to details (1000 series drawings)

Any Ecologists Recommendations / Requirements

Tennyson
2 Bedroom House
79.8sqm 859sqft

DRAWING TITLE

Elevation
Plot 30,31 - Tennyson

PROJECT

Land at
Weston-Under-Penyard

CLIENT

M F Freeman

SCALE 1:100@A3
DATE March 2017



DRAWING NO. 5631/W/719
REV B

Matthews Warehouse, High Orchard Street
Gloucester Quays, GL2 5QY T: (01452) 424234