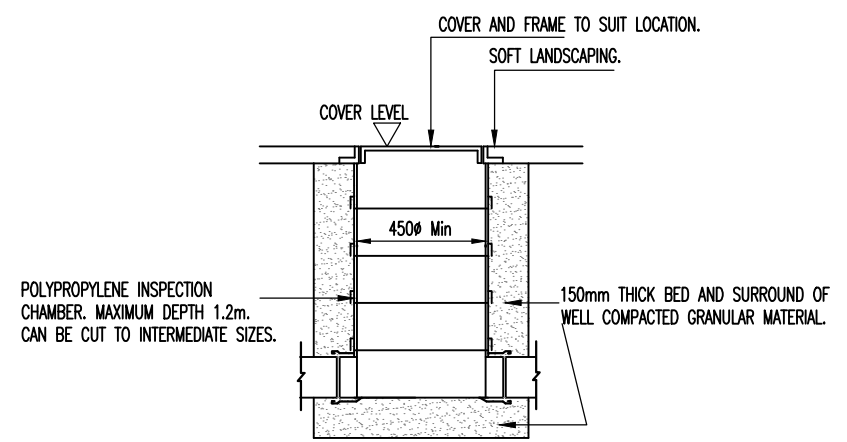
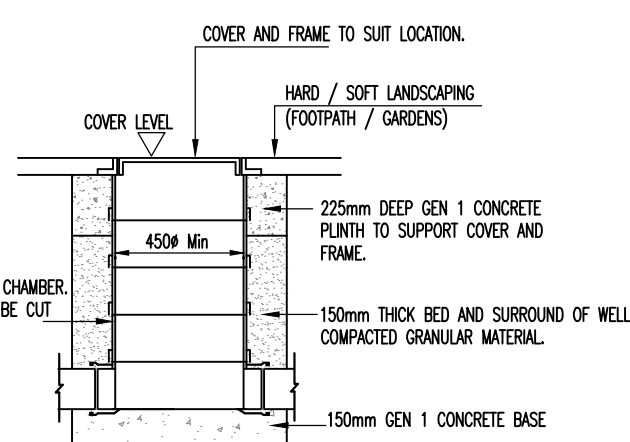


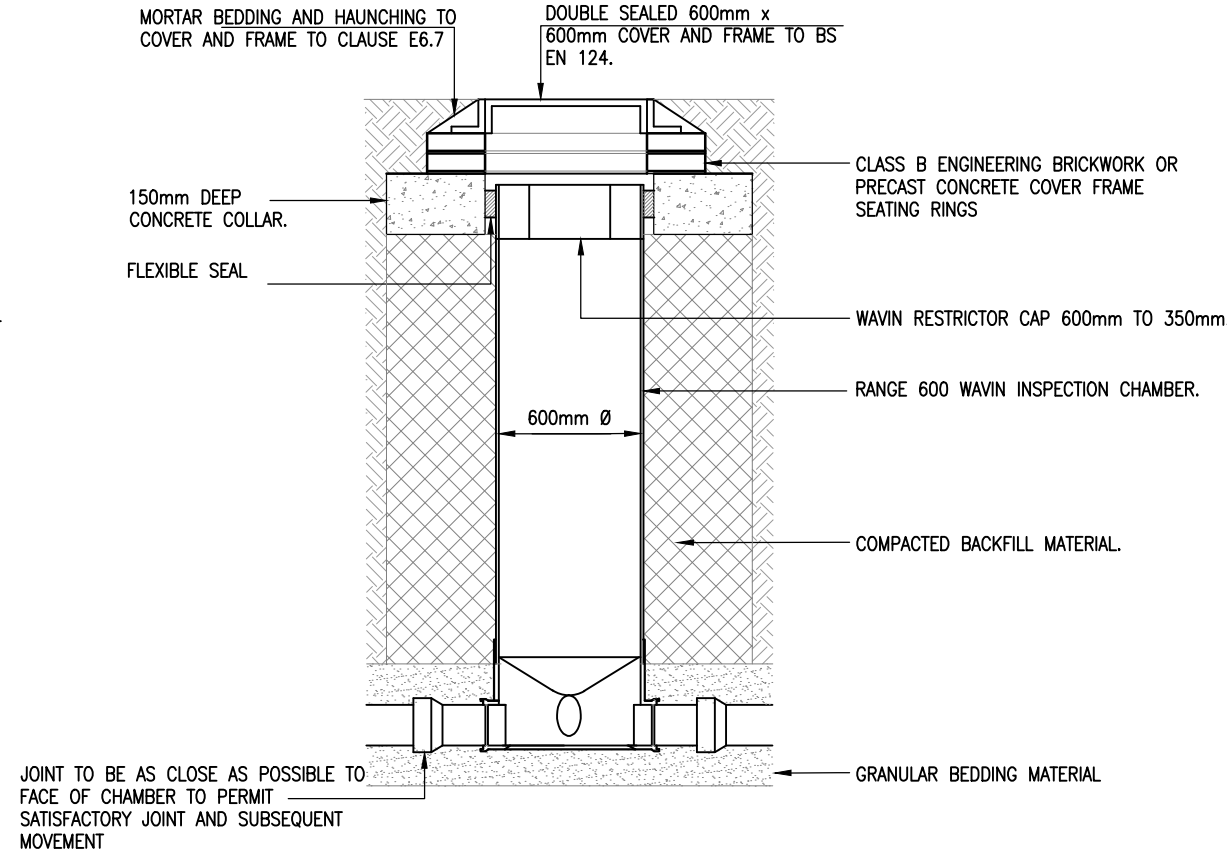
TYPICAL ACCESS CHAMBER DETAIL-TYPE 3 (FLEXIBLE MATERIAL DETAIL) SITED SOFT LANDSCAPE AREA



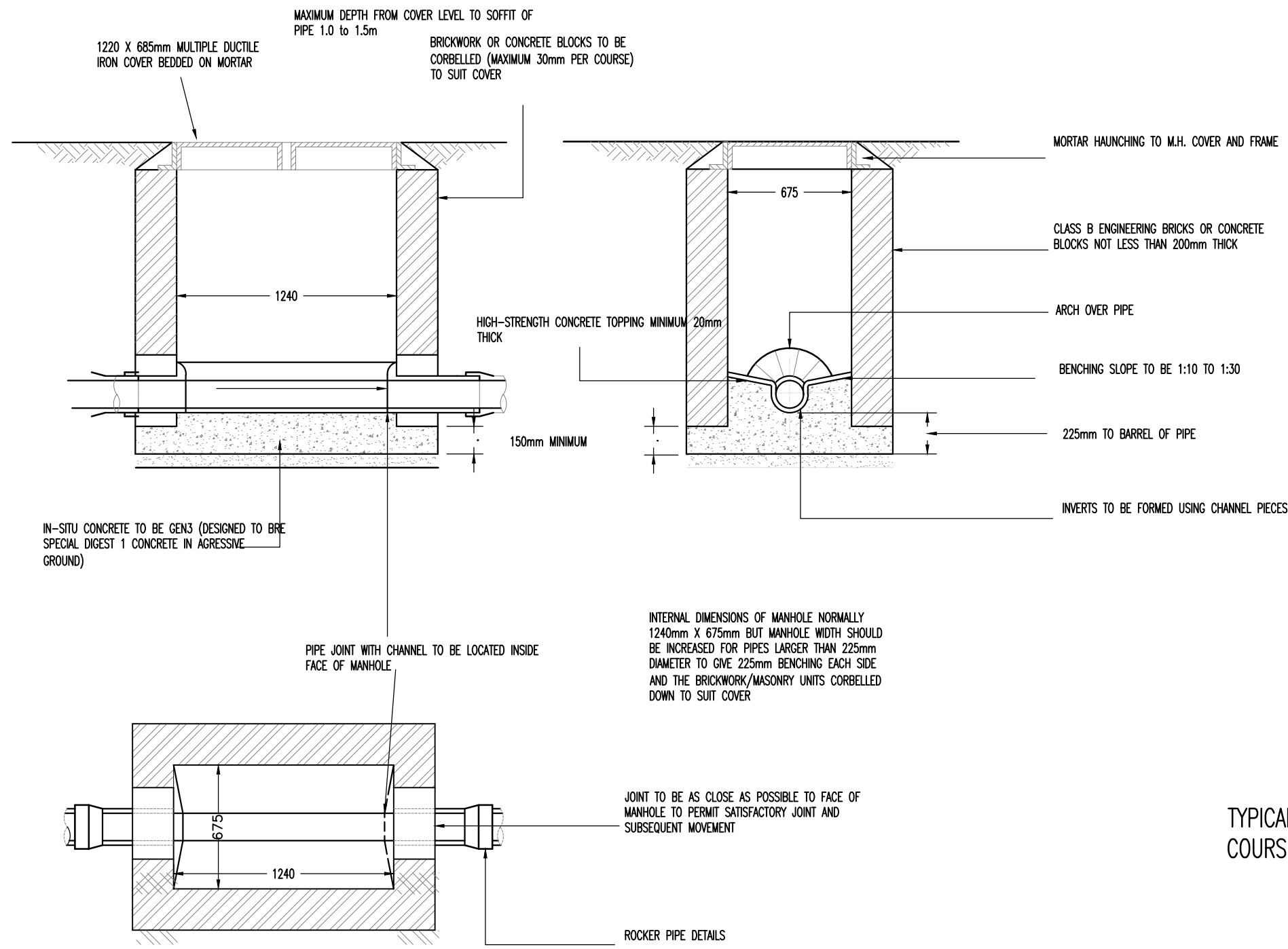
TYPICAL ACCESS CHAMBER DETAIL-TYPE 3 (FLEXIBLE MATERIAL DETAIL) TRAFFICKED AREA



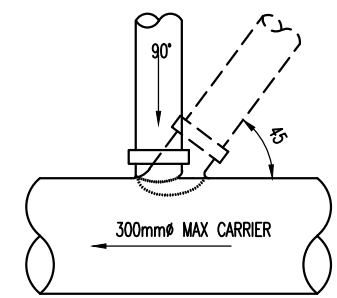
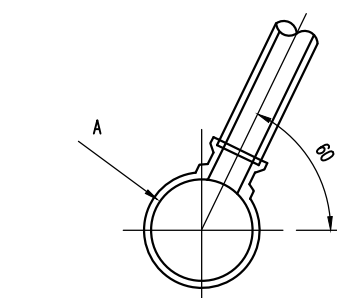
TYPICAL WAVIN RANGE 600 INSPECTION CHAMBER DETAIL (R600)



TYPICAL MANHOLE TYPE C



CONNECTION OF LATERAL TO CARRIER



NOTES

1. DO NOT SCALE FROM THIS DRAWING. USE FIGURED DIMENSIONS ONLY, IF IN DOUBT ASK.
2. ALL DIMENSIONS IN MILLIMETRES UNLESS NOTED OTHERWISE.
3. THIS DRAWING IS TO BE READ IN CONJUNCTION WITH ALL RELEVANT ENGINEERS AND ARCHITECTS DRAWINGS AND SPECIFICATIONS.

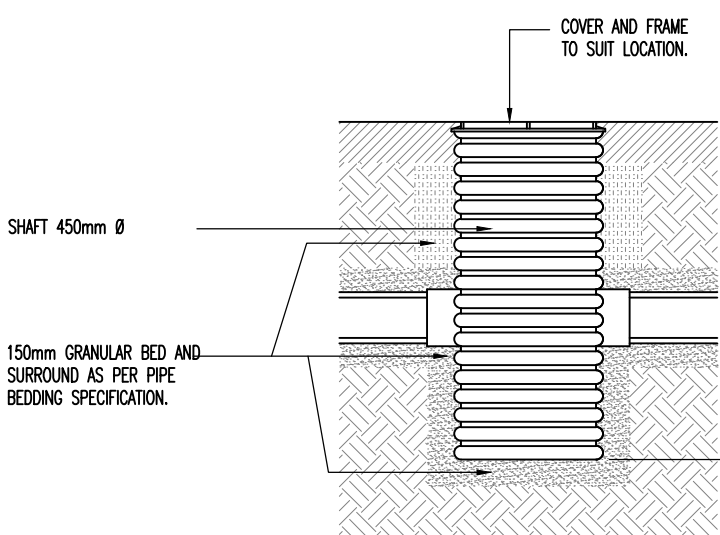
ROCKER PIPES

Nominal Diameter (mm)	Effective Length (mm)
150-600	0.600
675-750	1.000
over 750	1.250

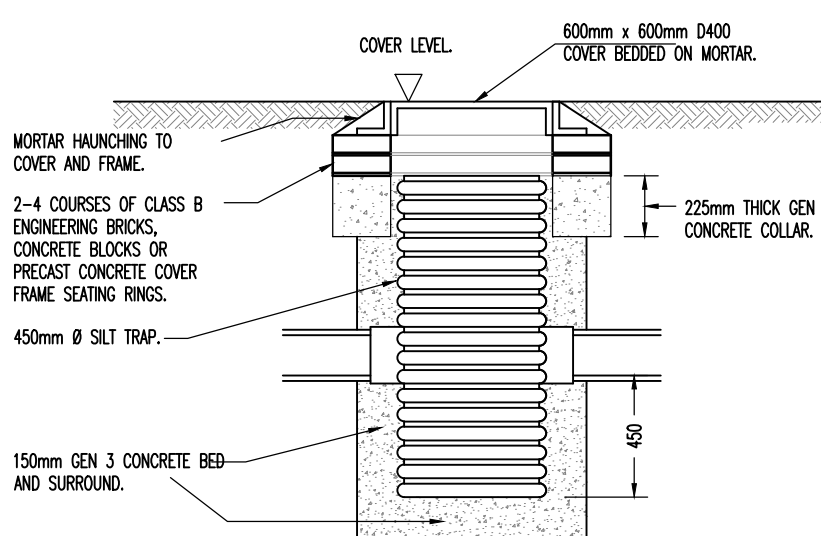
NOTE

PRIVATE DRAINAGE TO BE CONSTRUCTED IN ACCORDANCE WITH THE BUILDING REGULATIONS "APPROVED DOCUMENT H".

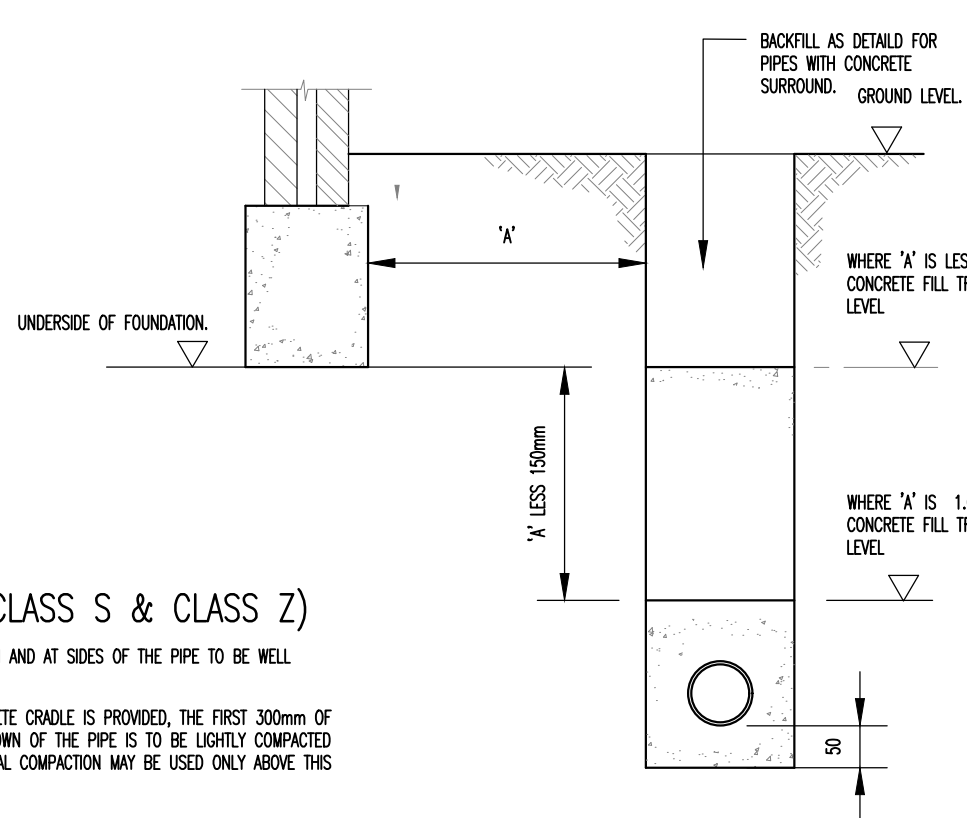
SILT TRAP



SILT TRAP WITH HEAVY DUTY D400 COVER AND FRAME



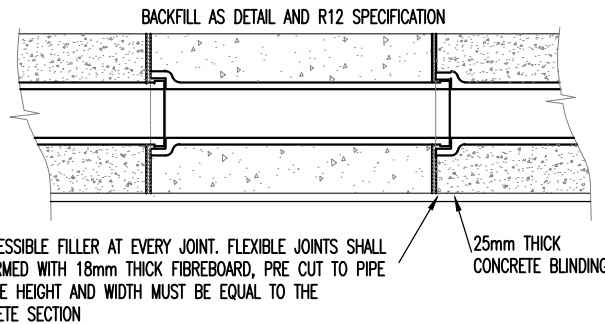
DETAILS ADJACENT STRIP FOUNDATIONS



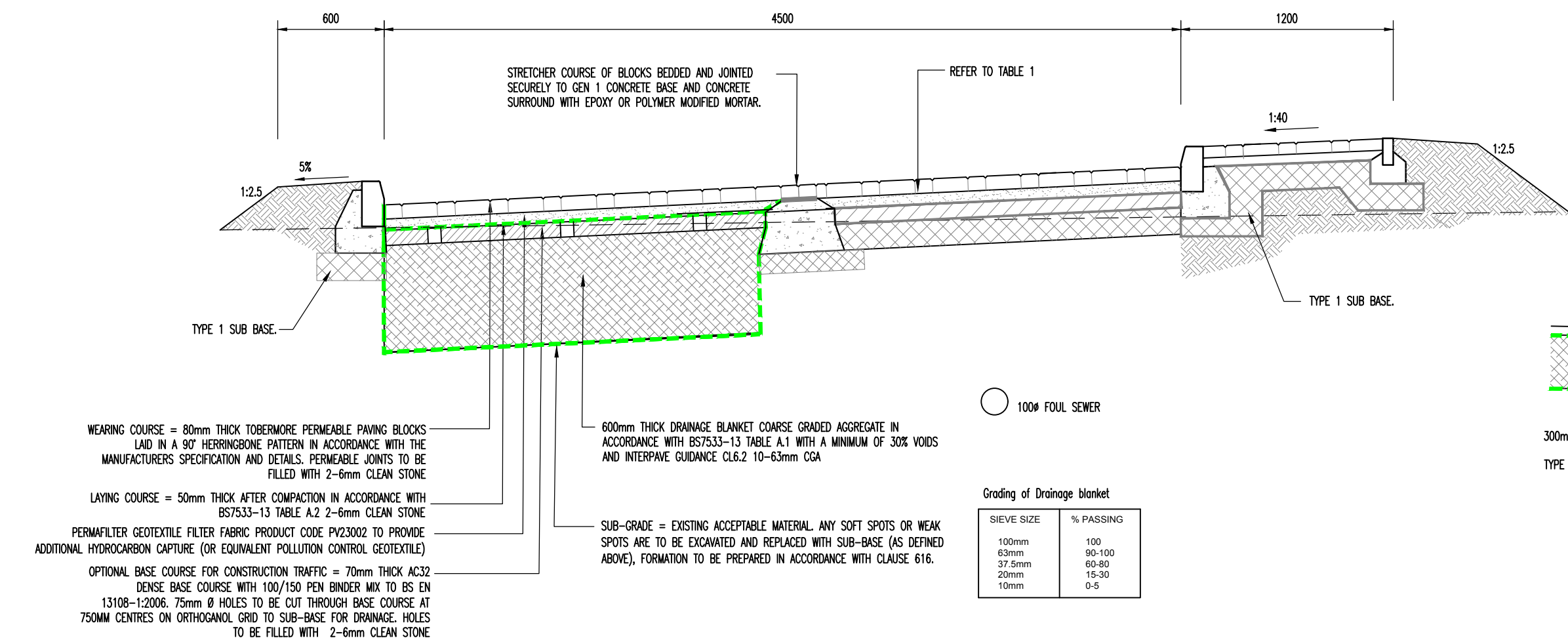
NOTES: (CLASS S & CLASS Z)

1. BEDDING BENEATH AND AT SIDES OF THE PIPE TO BE WELL COMPACTED.
2. WHERE A CONCRETE GRADLE IS PROVIDED, THE FIRST 300mm OF FILL ABOVE THE CROWN OF THE PIPE IS TO BE LOOSELY COMPACTED BY HAND. MECHANICAL COMPACTION MAY BE USED ONLY ABOVE THIS LEVEL.
3. CONCRETE GRADLES AND ARCHES MAY BE EXTENDED TO THE SIDES OF THE TRENCH.
4. GEOTEXTILES MAY BE USED WHERE DIRECTED OR APPROVED BY THE ENGINEER TO CONTAIN BEDDING MATERIAL IN CERTAIN SOILS E.G. RUNNING SAND.
5. IN VERY WET CONDITIONS, WHERE DIRECTED OR APPROVED BY THE ENGINEER A TEMPORARY LAND DRAIN MAY BE LAID WITHIN THE GRANULAR BED.
6. NOTES: (CLASS Z ONLY)
WHERE PIPES WITH FLEXIBLE JOINTS ARE USED THE CONCRETE PROTECTION SHALL BE INTERRUPTED OVER ITS FULL CROSS-SECTION AT EACH JOINT BY A SHAPED 18mm COMPRESSIBLE FILLER. IF PIPES ARE SURROUNDED IN CONCRETE THE JOINTS SHALL BE PROTECTED FROM THE INGRESS OF CONCRETE BY WRAPPING THEM WITH TWO COATS OF MASTIC BANDAGE TAPE.
7. CONCRETE TO BE GEN 1
8. WHERE FLEXIBLE PIPES ARE USED, CARE MUST BE TAKEN TO PREVENT THE PIPES FROM FLOATING.

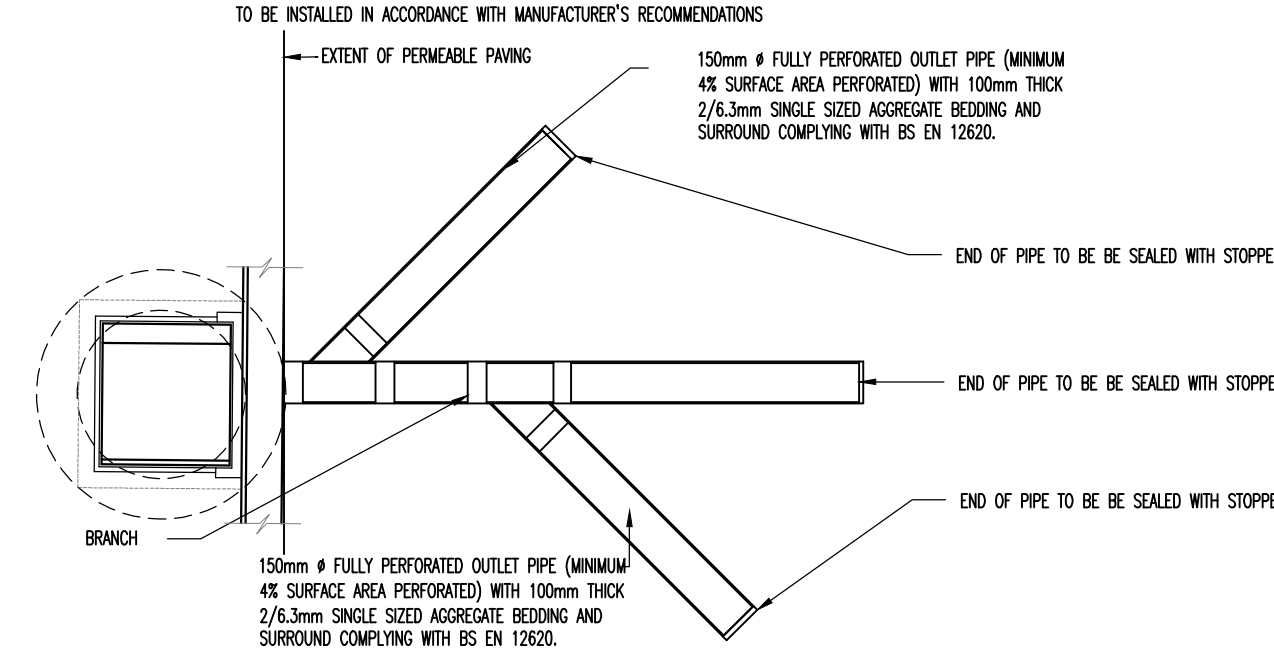
ELEVATION ON CLASS Z BEDDING



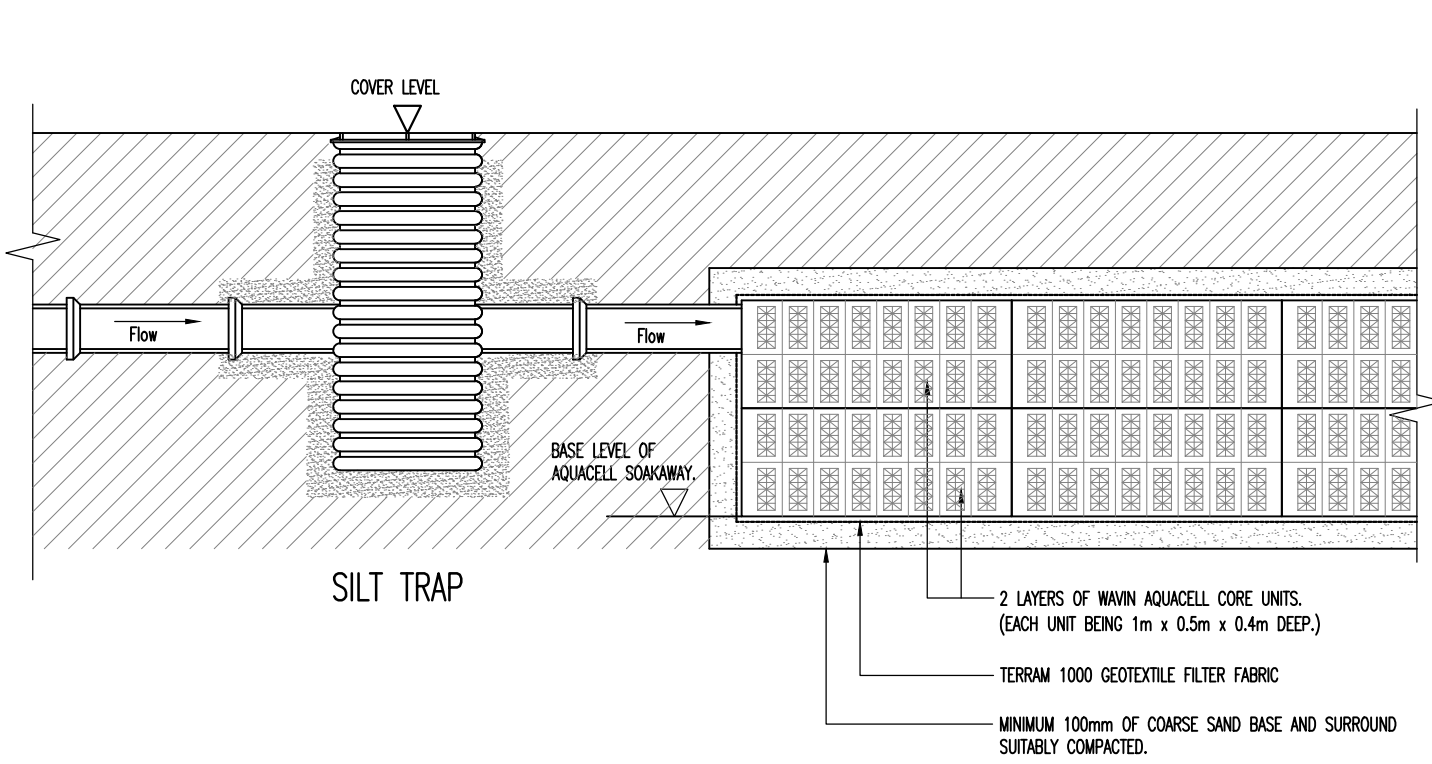
TYPICAL SECTION THROUGH ACCESS ROAD SHOWING TRADITIONAL BLOCKWORK CONSTRUCTION CROSSFALLING TOWARD PERMEABLE PAVING



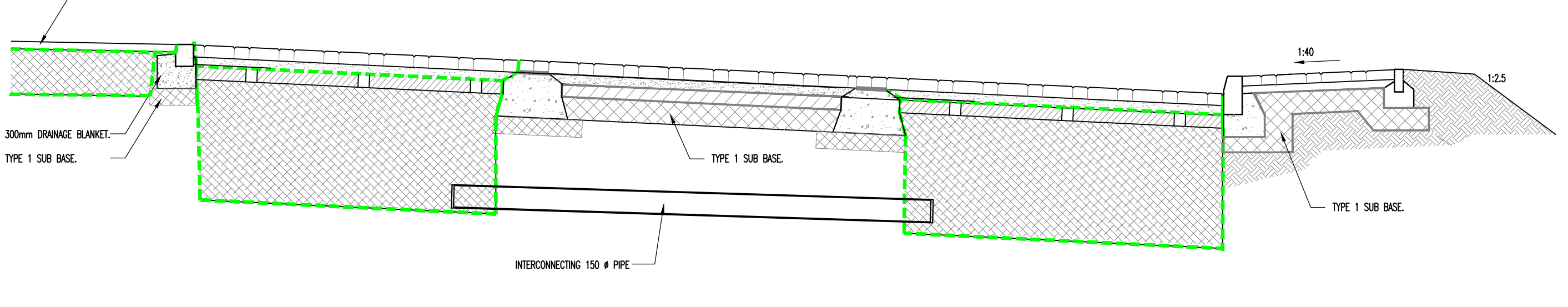
PLAN OF DISTRIBUTION PIPE WITHIN DRAINAGE BLANKET FROM ROAD GULLEY



AQUACELL SOAKAWAY DETAIL



SECTION THROUGH TURNING AREA TOWARD SHARED DRIVE



03.03.20	ISSUED FOR PLANNING	-
REVISION	-	-
DATE	-	CHECKED

Client:

Project Title:
**PROPOSED HOUSING DEVELOPMENT
BROOKSIDE, WHITCHURCH
ROSS ON WYE, HEREFORDSHIRE**

Drawing Title:
**PROPOSED DRAINAGE
CONSTRUCTION DETAILS**

Drawn By: RN	Scales: 1:250/8M1	Rev:
Date: FEB 2020	Drawing Number:	
Checked By:	10660-501	
Date:		

Drawing Status: **PLANNING**

njp
NJP Consulting Engineers Limited
20 St Andrews Crescent
Cardiff CF10 3DD
Tel: 029 2072 9500
Email: info@njpuk.com
Web: www.njpuk.com