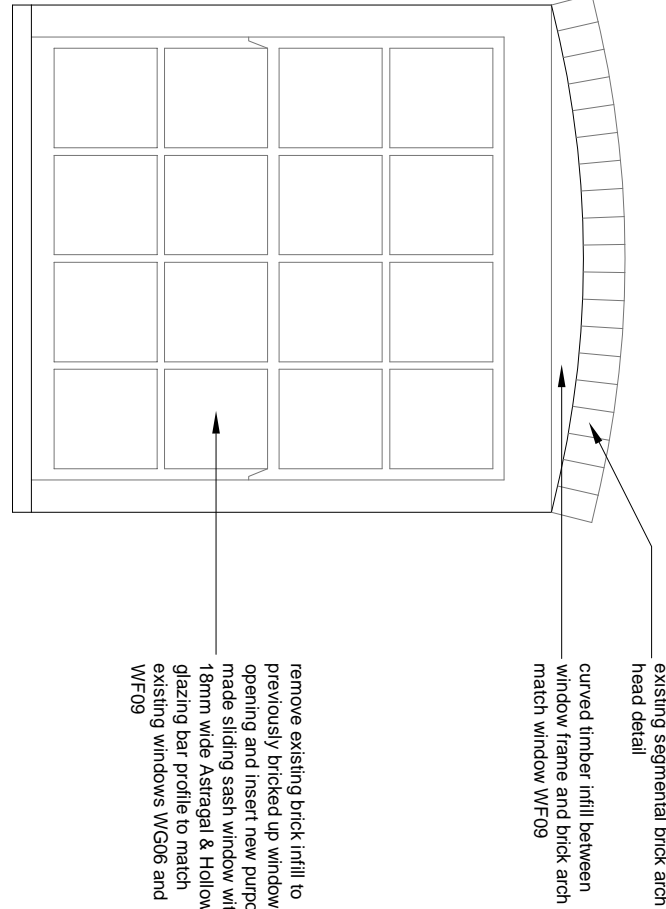
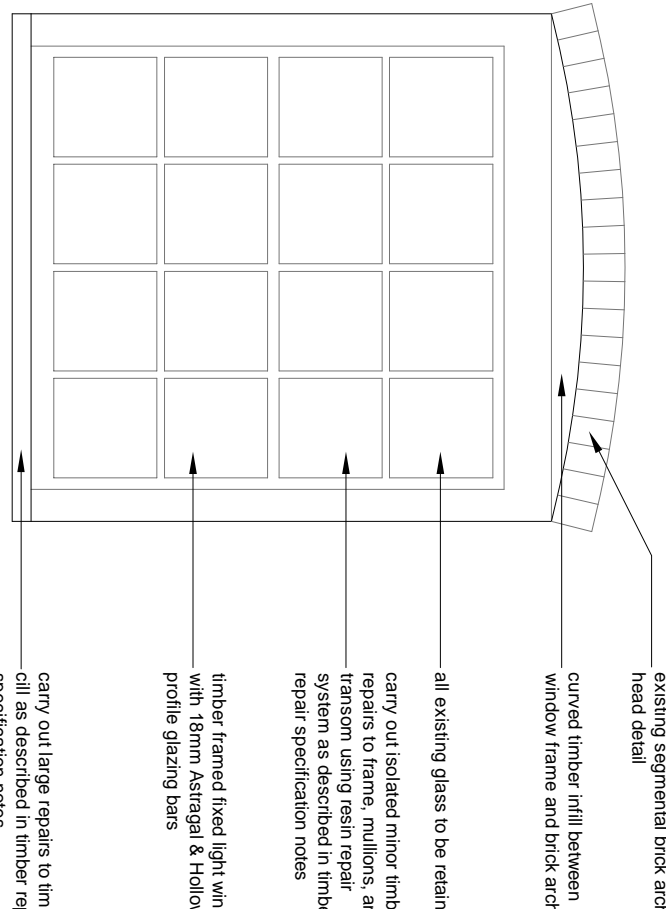


WF01 - South-East Elevation
(C17 Farmhouse)

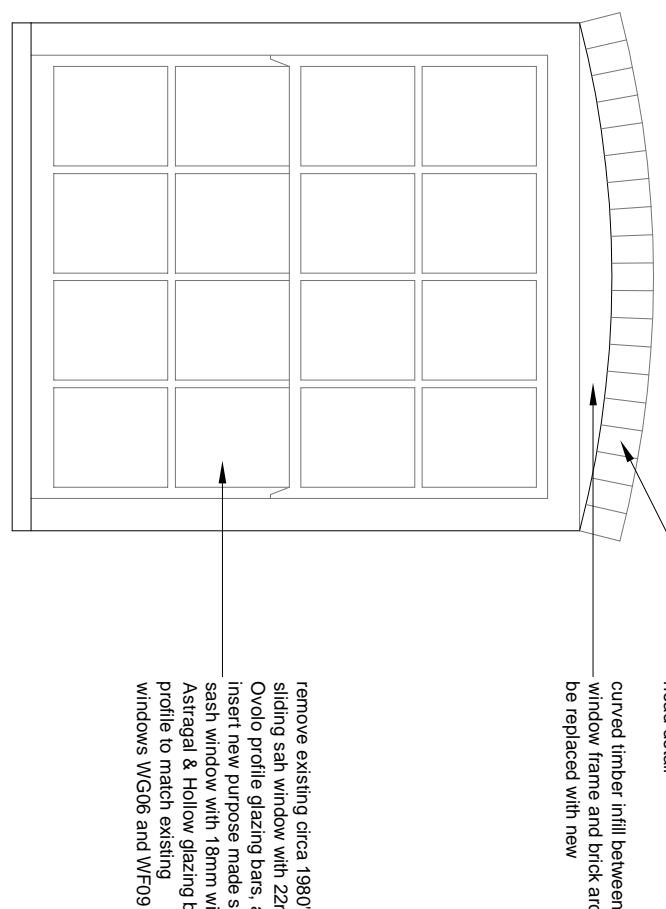
- Steel Window Renovation:**
- Any exposed areas of metal showing signs of rust are to be lightly brushed with a wire brush to remove most badly affected areas. Brush apply Rustins or similar water based rust converter treatment over affected areas to remove and neutralise remaining rust.
 - Lightly sand steel frames to remove loose and flaking paint. Do not completely remove paint.
 - Apply gloss paint finish to prepared areas. Paint colour to be white to match existing.



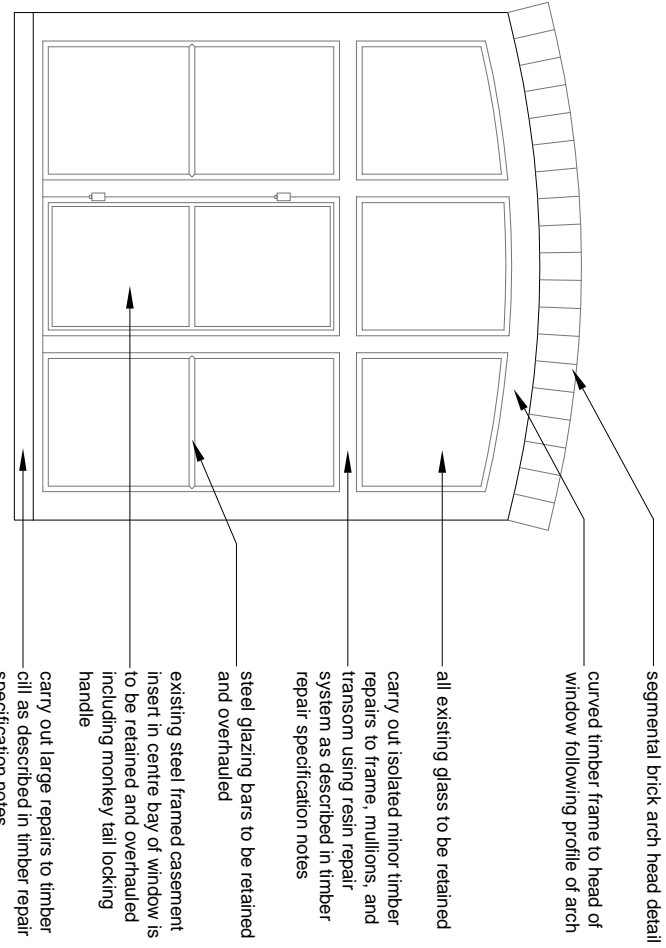
WF09a - South-East Elevation
(C17 Farmhouse)



WF09 - South-East Elevation
(C17 Farmhouse)

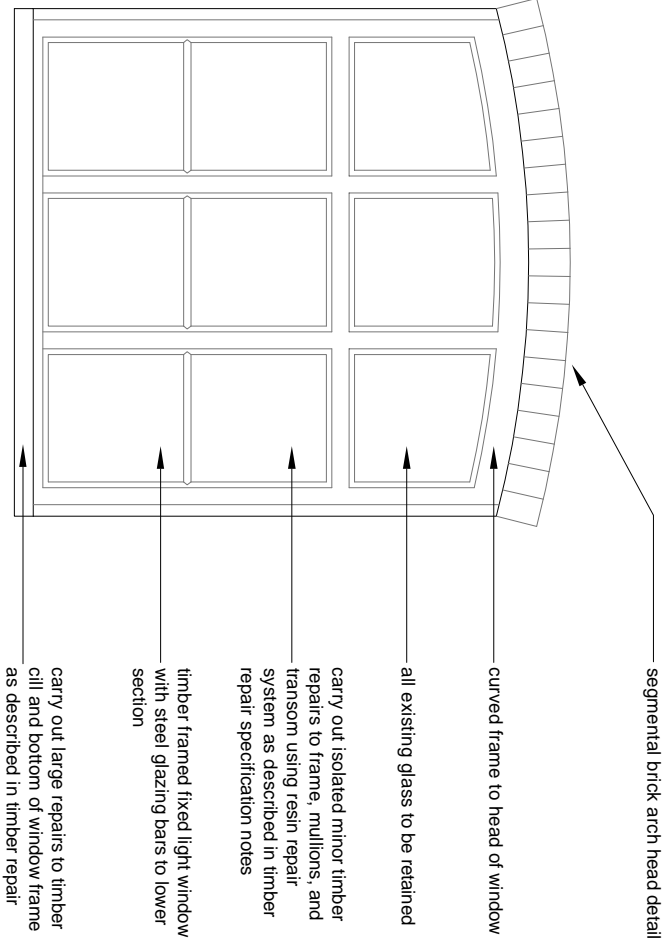


WF08 - South-East Elevation
(C17 Farmhouse)

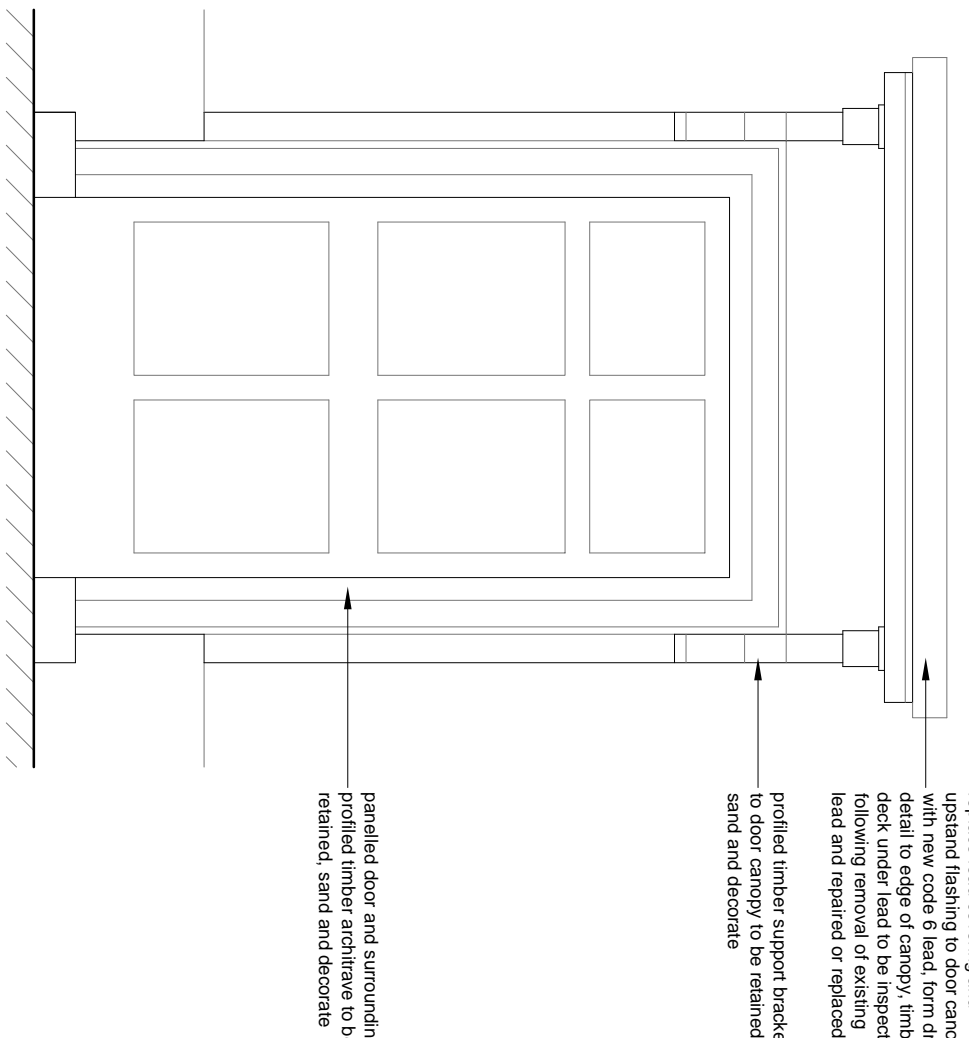


WG02 - South-East Elevation
(early C19 addition)

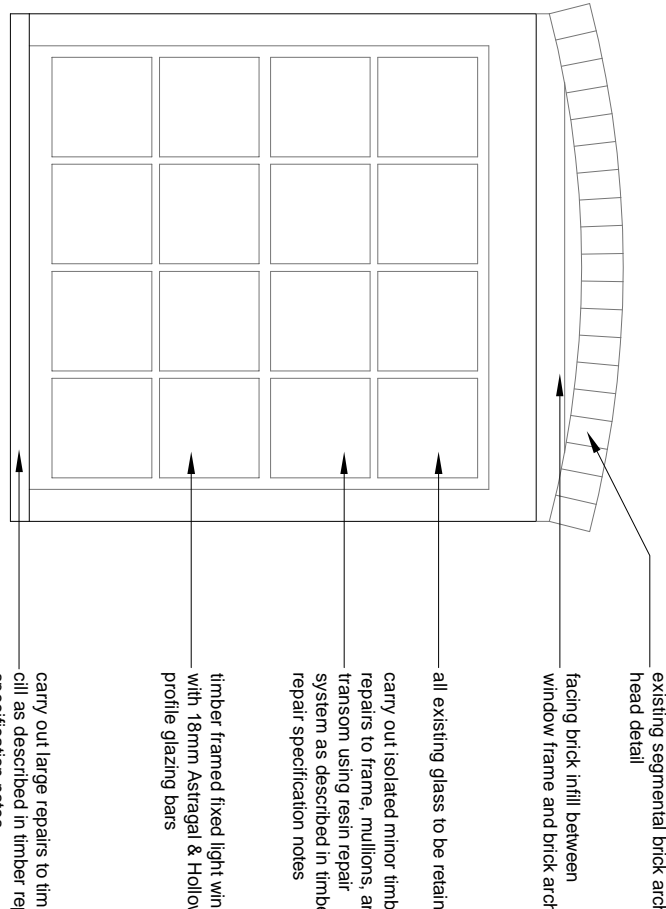
- Steel Window Renovation:**
- Any exposed areas of metal showing signs of rust are to be lightly brushed with a wire brush to remove most badly affected areas. Brush apply Rustins or similar water based rust converter treatment over affected areas to remove and neutralise remaining rust.
 - Lightly sand steel frames to remove loose and flaking paint. Do not completely remove paint.
 - Apply 2no. coats Dulux gloss paint to prepared areas. Paint colour to be white to match existing.



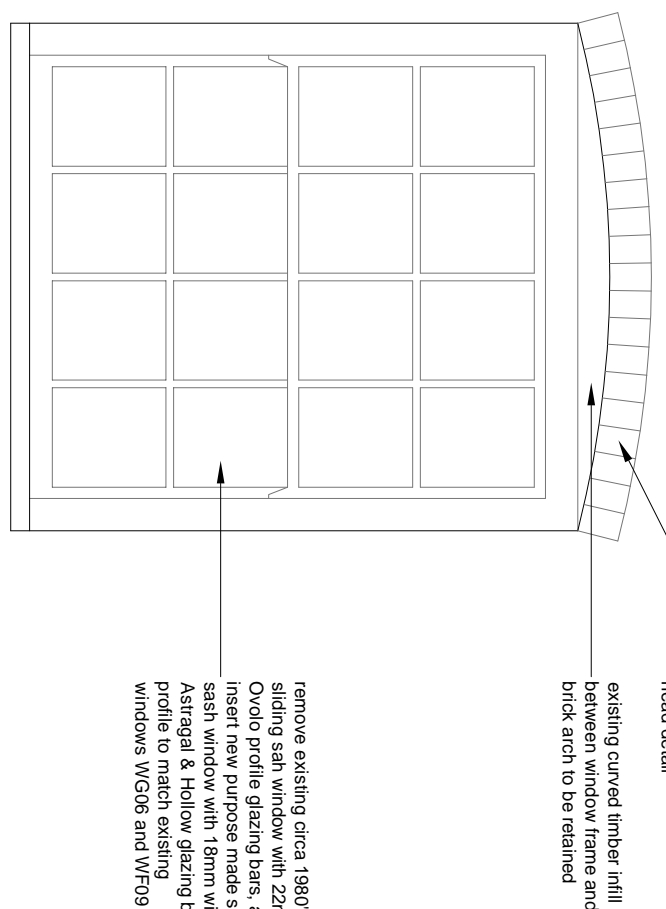
WG01 - South-East Elevation
(C17 Farmhouse)



DG01 - South-East Elevation
(C17 Farmhouse)



WG06 - South-East Elevation
(C17 Farmhouse)



WG05 - South-East Elevation
(C17 Farmhouse)

Timber Repair Specification:

Small Isolated Timber Repairs:

- Remove rotten area of timber using appropriate hand tools taking care to keep timber removal to a minimum.
- Clean sides of void using a router to ensure all rotten timber has been removed.
- Stabilize remaining timber using Repair Care Dry Fix or equal approved primer.
- Fill void using Repair Care Dry Flex or equal approved resin repair and smooth out to face of surrounding timber.
- Sand resin repair to be flush with surrounding timber and ready to receive paint finish.
- Larger Timber Repairs:**
 - Remove rotten area of timber using appropriate hand tools taking care to keep timber removal to a minimum.
 - Clean sides of void using a router to ensure all rotten timber has been removed.
 - Stabilize remaining timber using Repair Care Dry Fix or equal approved primer.
 - Fill larger void with either a timber insert, or splice in new of timber of a similar species to the original (ie. good quality softwood such as Douglas fir grade 2 or better, or an appropriate hardwood such as oak or ash).
 - Fill the gap between old and new timber using Repair Care Dry Flex or equal approved resin repair and smooth out to face of surrounding timber.
 - Sand resin repair to be flush with surrounding timber and ready to receive paint finish.

Decoration:

- Sand down window and door frames by hand to remove loose and flaking paint.
- Apply 1no. undercoat and 2no. coats Dulux gloss paint to prepared surfaces.

