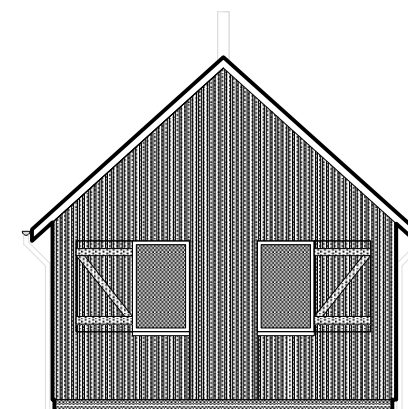
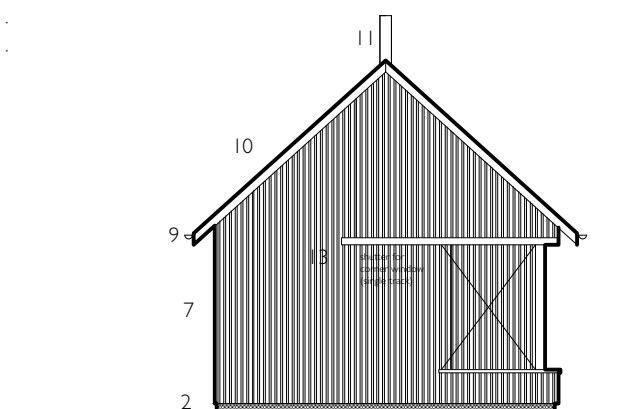


NORTH ELEVATION

DAY TIME SHUTTERS OPEN

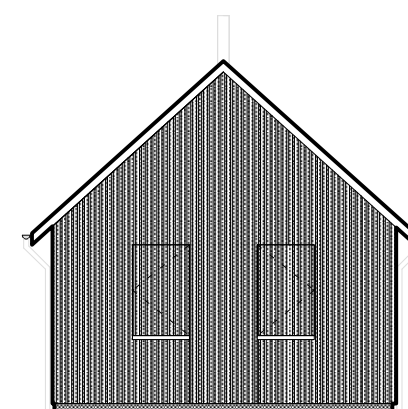


SOUTH ELEVATION

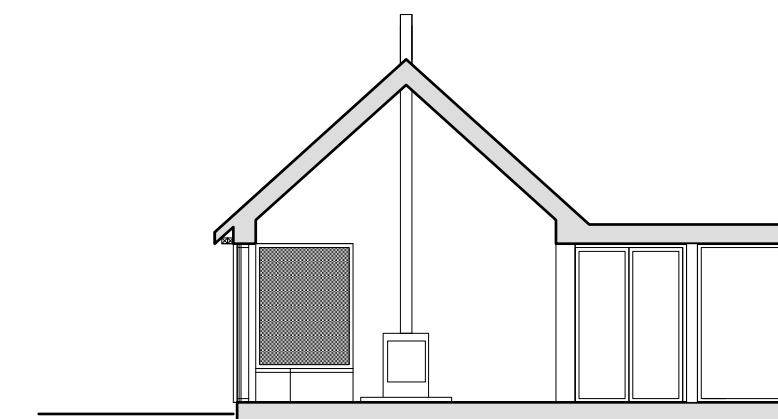


NORTH ELEVATION

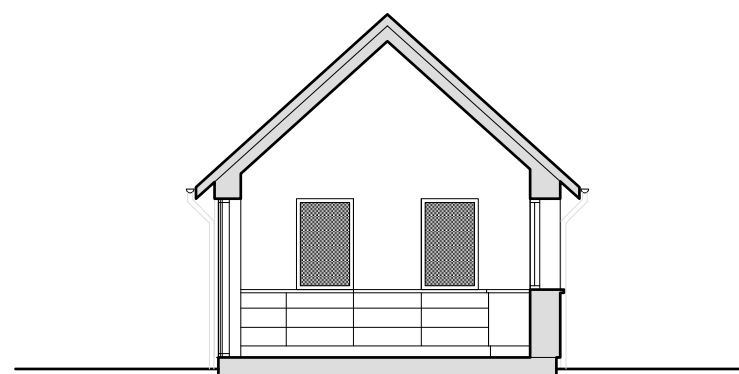
NIGHT TIME SHUTTERS CLOSED



SOUTH ELEVATION



SECTION LOOKING NORTH



SECTION LOOKING SOUTH

#### Key to Materials

- 1 Exposed black painted structural timber framing
- 2 Brick
- 3 Natural stone
- 4 Render
- 5 Slate roof
- 6 Painted timber windows and doors
- 7 Black stained vertical timber cladding
- 8 Aluminium/timber hybrid windows
- 9 Galvanised steel rainwater goods
- 10 Steel profiled sheet roofing (Corten)
- 11 Woodburner flue
- 12 Single ply roofing or lead
- 13 Black stained timber shutters

#### Revisions

A 26.10.20

Revised in light of comments  
from Planning & Conservation

B30.11.20

Revised in light of further comments  
from Planning & Conservation

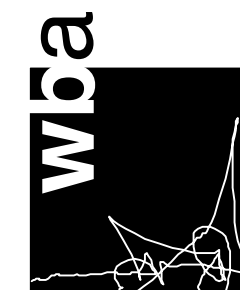
Proposed Extension  
2 Sheepwash Cottages Knill

**Gable elevations and  
sections as proposed**

Drawing no. **99720.P19B**

Scale 1:100 at A3

November 2020



**warren benbow architects**

21-22 Mill Street Kington  
Herefordshire HR5 3AL

01544 239 136

[www.warrenbenbow.com](http://www.warrenbenbow.com)  
[mail@warrenbenbow.co.uk](mailto:mail@warrenbenbow.co.uk)

