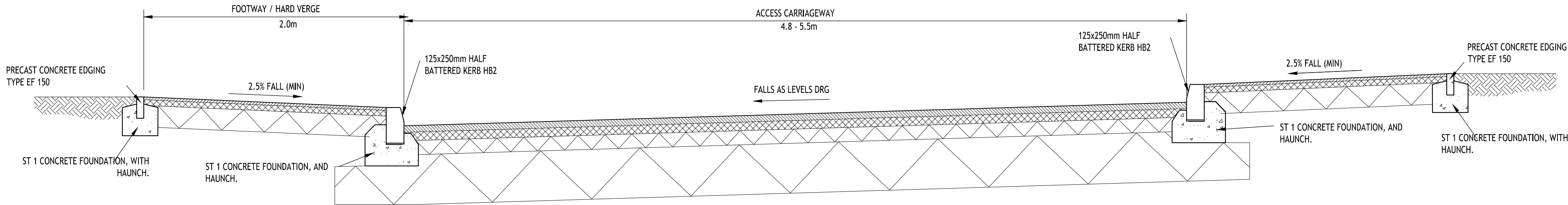


Notes:

1. ...



SECTION THROUGH NEW CARRIAGEWAY

FOOTWAY / HARD VERGE CONSTRUCTION

Surface Course -25mm Thick. AC 6 dense surf 100/150 to BS EN 13108-1

Binder - 75mm Thick. AC 20 dense bin 100/150 to BS EN 13108-1

on 150mm minimum MOT 1 Sub-base

CARRIAGEWAY CONSTRUCTION

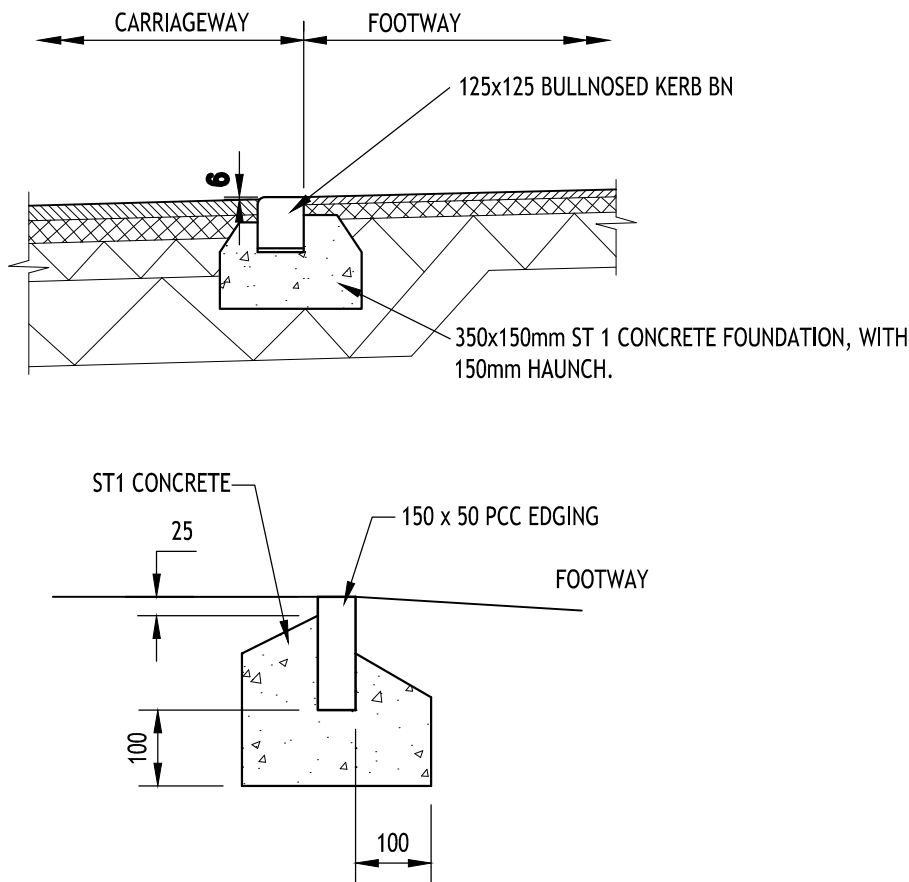
Surface Course -40mm Thick. HRA 55 surf 40/60 to BS 594

Binder - 60mm Thick. AC 20 dense bin 100/150 to BS EN 13108-1

Base - 130mm Thick. AC 32 dense base 100/150 to BS EN 13108-1

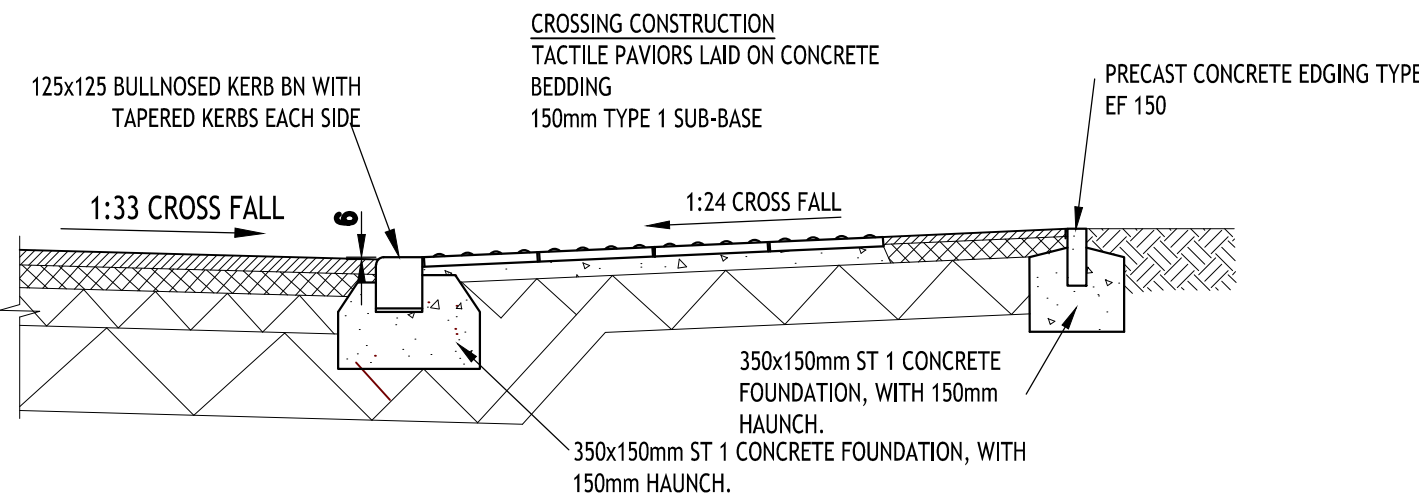
on 225mm MOT 1 Sub-base

CONSTRUCTION DEPTHS BASED ON ASSUMED CBR 5.0%. ACTUAL CBR TO BE DETERMINED ON SITE AND SUB-BASE / CAPPING ADJUSTED ACCORDING TO TABLE

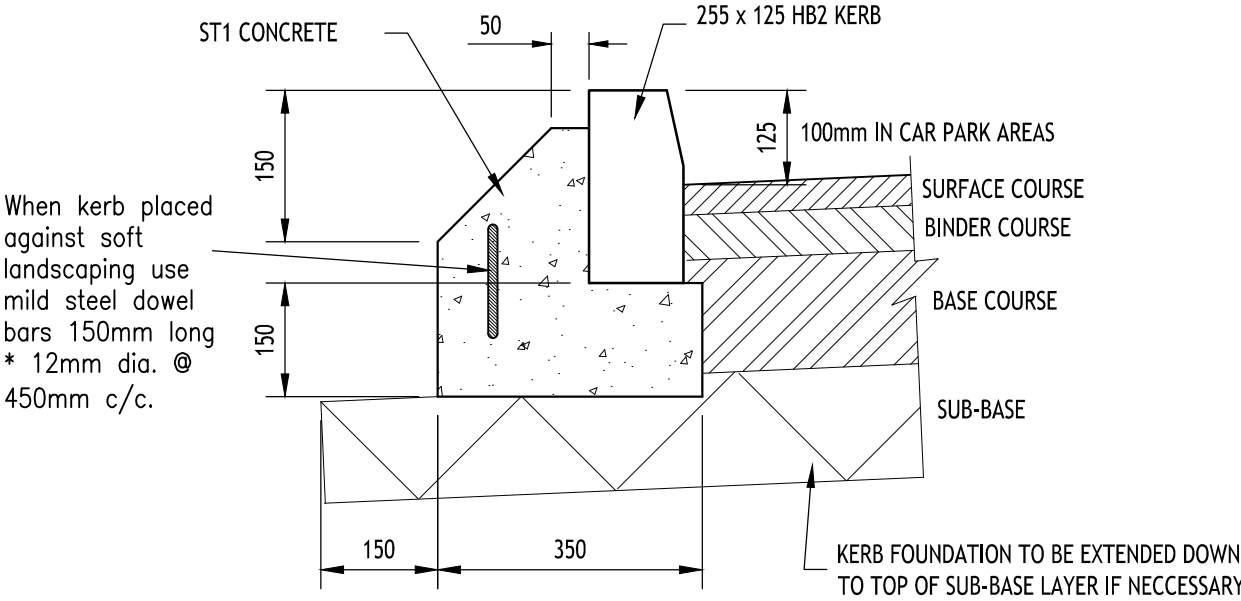


EDGING KERB FOUNDATION DETAIL

SCALE 1:10

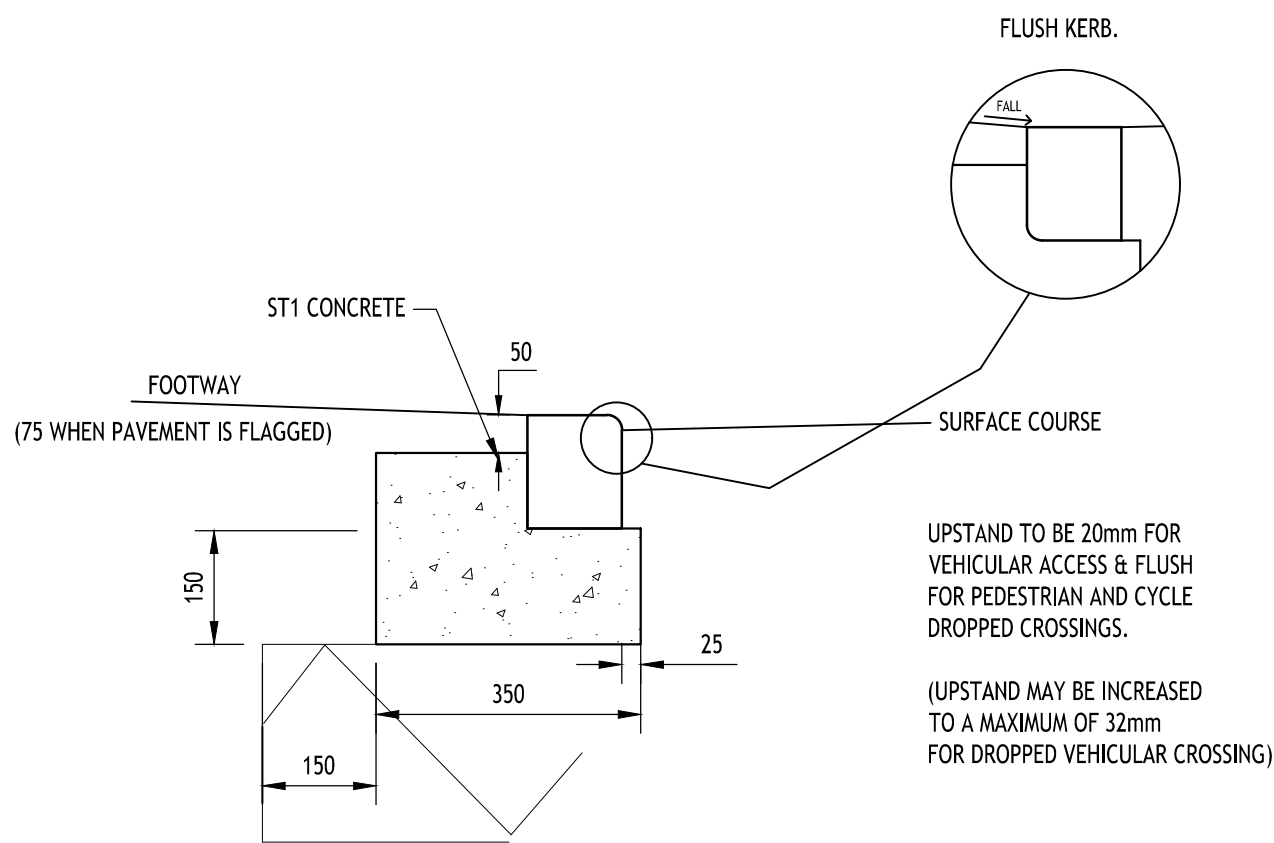


SECTION THROUGH PEDESTRIAN CROSSING



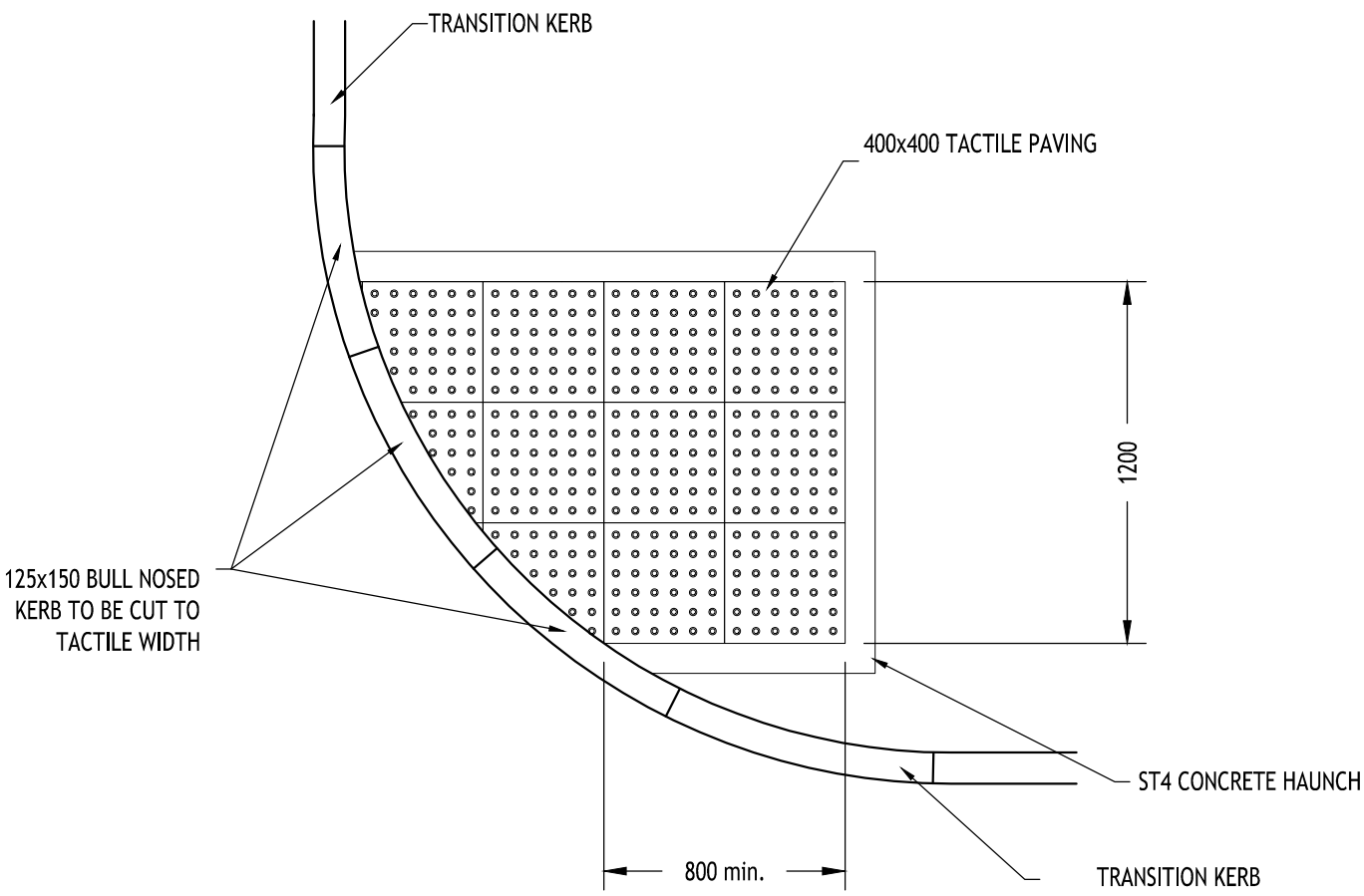
HB2 KERB FOUNDATION DETAIL

SCALE 1:10



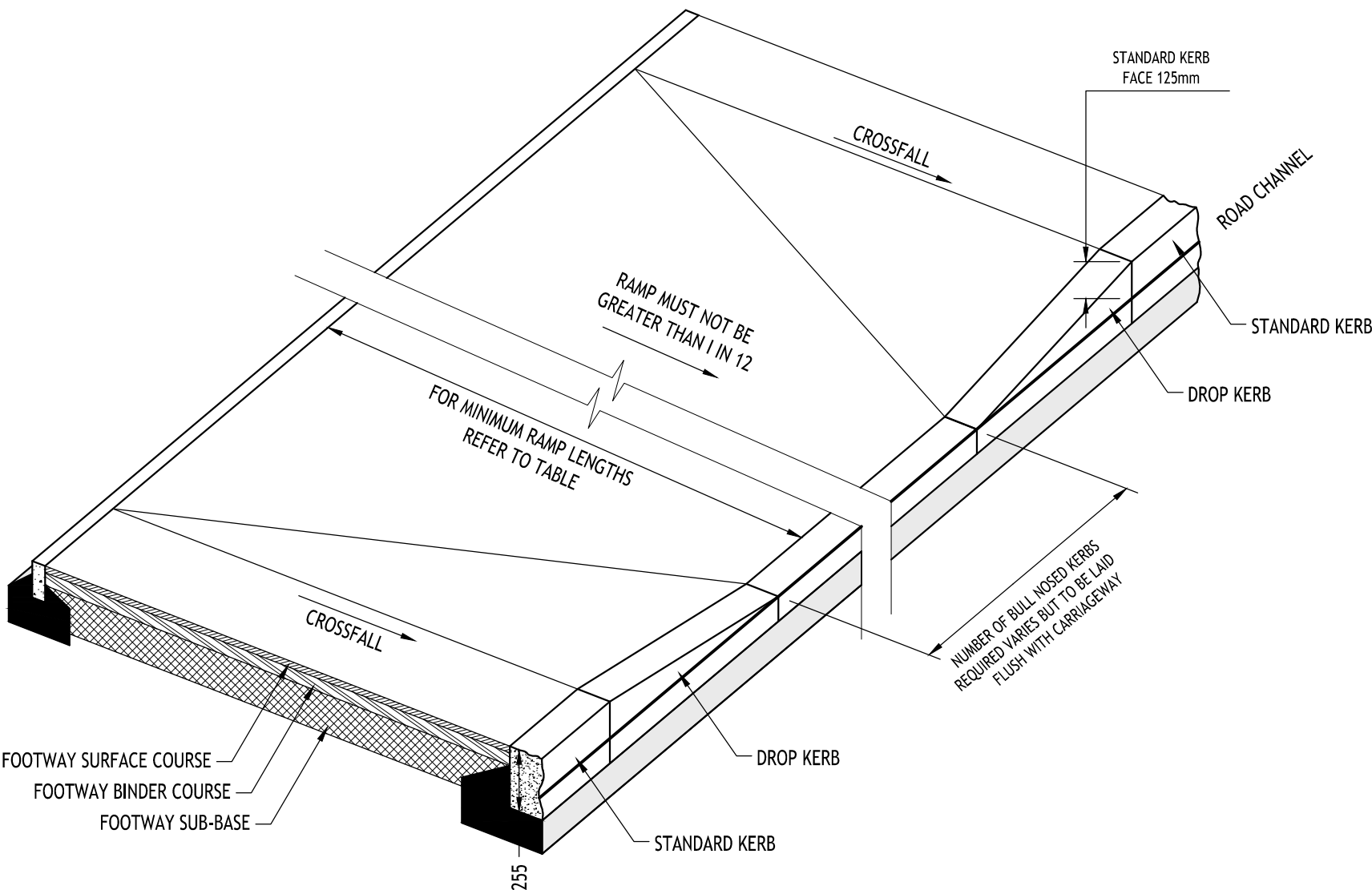
FOUNDATION DETAIL FOR 150x125mm B.N. KERB

SCALE 1:10



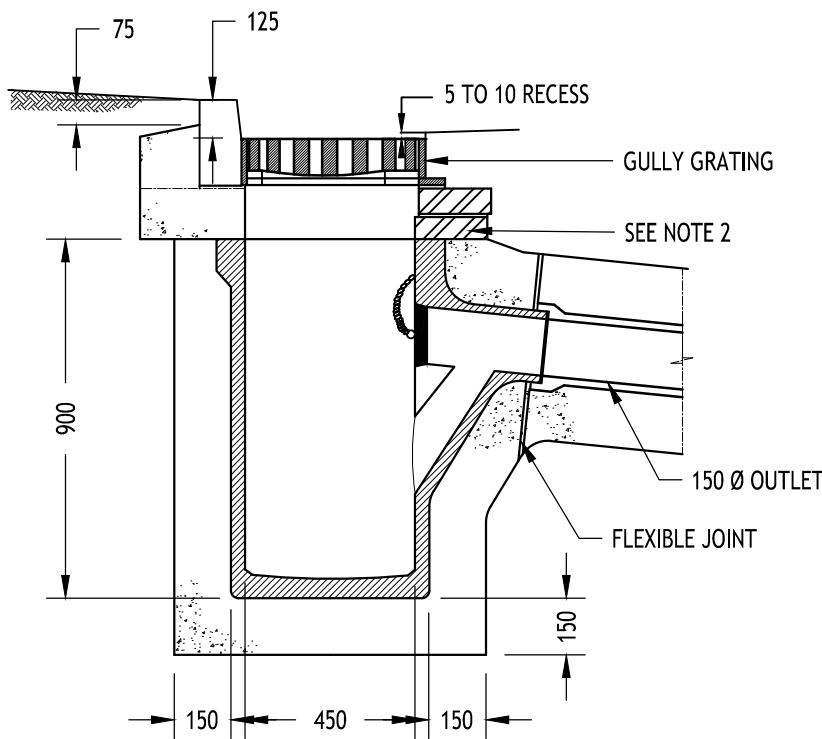
TACTILE PAVING LAYOUT ON A RADIUS

SCALE 1:25



STANDARD ROAD GULLY DETAIL

SCALE 1:20



1. DUCTILE IRON GULLY GRATING AND FRAME TO BS EN124 LOAD CLASS D400 BEDDED ON 10mm 1:3 SAND/CEMENT MORTAR (NON-ROCK DESIGN).
2. COVER AND FRAME TO BE SEATED ON 2 COURSES MIN , 4 COURSES MAX. OF ENGINEERING BRICKWORK CLASS "B".
3. GULLY POTS TO BE PRECAST CONCRETE TO BS 5911 PART 2 WITH 150mm THICK ST4 CONCRETE FOUNDATION AND SURROUND. OUTLET TO BE 150mm DIA., TRAPPED, WITH GALVANIZED METAL CHAIN AND STOPPER.
4. UNLESS OTHERWISE STATED PIPE CONNECTION BETWEEN MAIN RUN AND GULLY CONNECTION TO BE BEDDING TYPE Z.
5. MINIMUM WATERWAY OF GULLY TO BE 916cm.

P1	30.06.20	JCB	JH	PJB
Description: ISSUED FOR INFORMATION				
Issue	Date	By	Chk'd	App'd



Richmond House, Sandpiper Court, Chester Business Park, Chester, CH4 9QZ
T: 01244 684 900 E: info@tieruk.com www.tierconsult.co.uk

Client:

LIEUIN LIMITED

Project Title:
ROSEMARY LANE
LEINTWARDINE

Drawing Title:
ROAD CONSTRUCTION DETAILS

Scale at A1: AS SHOWN	Drawn By: J.C.BOTTING	Start Date: 27.08.2019
Project No: T_19_2172	Drawing Status: PRELIMINARY	
Drawing No: 60-04	Issue: P1	