



# CATALOGUE CABINS

0121 288 2840  
[www.britishlogcabins.com](http://www.britishlogcabins.com)

## LUXURY LOG HOMES

Complete design and build service meeting full UK building regulations.

## WOODLAND CABINS

A permitted development in your woodland that adds real value.

## CUSTOM TIMBER PROJECTS

Timber design and build projects, from garden buildings and pergolas to furniture and kitchens.



## BRITISH LOG CABINS

The home of handcrafted log building in the UK





08

TURNKEY LOG HOMES

A complete log home design and build service. Custom specifications, flexible service and a passion for the trade.



14

WOODLAND & GARDEN CABINS

We offer several construction methods and build cabins to any shape and size, for any purpose.

5 **HANDCRAFTED LOG BUILDING**  
What is it exactly?  
The trade, the art, the history.

12 **SELF BUILDERS**  
Log work only and sealed shell packages available for nationwide delivery. Manage your own log cabin project.

18 **ROOFING OPTIONS**  
Roofing finishes that we offer.  
The pros, the cons and the value.

20 **PLANNING AND DESIGN SERVICE**  
In house drafting service, offering a smooth workflow from pencil to chainsaw.

23 **EXAMPLE PLANS**  
To give you inspiration. Here you will find some of our stock plans. Prices based on these plans can be found in the Price Guide.

33 **BOILER HOUSES AND TIMBER FRAMED BUILDINGS**  
We don't just build with logs.

34 **QUESTIONS & ANSWERS**  
All the answers to your most commonly asked questions.

36 **LOG BUILDING COURSE**  
Learn the basics of log building our two week course in log construction.

38 **OTHER PRODUCTS**  
Log picnic tables to commercial signage, our extensive range of timber products.

40 **LOG MARQUEES**  
Beautiful temporary buildings to suit any event.

42 **LUXURY SHEPHERD HUTS**  
Simple buildings: no planning, no mess. Functional and beautiful.

43 **CEDAR WOOD HOT TUBS AND SAUNAS**  
The ultimate outdoor luxury. Perfect for relaxing alone or with friends and family.

HELLO

Welcome to British Log Cabins.  
The home of handcrafted log building in the UK.

Thanks for picking up our brochure. Our company has come a long way over the past 7 years and I hope that our new CATALOGUE CABINS publication represents what we stand for and the quality of our workmanship, giving you an insight into what drives us and what we are able to offer as a company.

Our product remains unique because the skill set required to produce handcrafted log cabins and post and beam cabins to a high standard is still a rare commodity in the UK. We pride ourselves on the quality of our workmanship and our flexible approach to new projects. We are always thinking outside the box to develop our product line, our methods and our service.

We have recently launched our new handcrafted log marquee, available for event hire and for purchase. We are making a strategic move into the glamping and mobile home market offering high quality, substantial, natural log cabin solutions built to BS3632. We are also expanding our product range to include Cedar timber products (off our saw mill) and log furniture.

Our log building course 'Log Building 101' is going from strength to strength with updated literature each year and a fresh cabin design for students to work on. We are working on developing shorter courses for those who would like a less intensive taste of log building and more advanced courses covering larger buildings and other notch types.

The popularity of log cabins and log homes in the UK has increased dramatically over the past few years. We see this through an increase in demand for our work, but it is also evident in greater media interest and coverage of log cabins

in the national press. BLC has recently been featured in both *The Sunday Times* Home supplement and had a case study published in *Build It Magazine*. We have also experienced a flourish of followers on our facebook page and an ever increasing number of subscribers to our popular email newsletter.

Martyn, myself and the whole team at BLC have a passion for log building. Every project at British Log Cabins is treated with fresh eyes, helping to drive innovation within and expansion of the log home industry in the UK.

Our log cabins and log homes are things of daydreams and fairy tales. We would like to thank our customers to date for their vision, determination and belief in our skills and in our products. BLC would not be the company it is today without you and we would not have had the opportunity to do what we love doing for a living!

We look forward to taking on further interesting log building projects and sharing in your aspirations to create unique, natural spaces around the UK.

Please don't hesitate to be in touch with us to discuss log building and any projects you have in mind, however far in the future. All dreams have to start somewhere.

DAN WARING, BRITISH LOG CABINS  
Director



# HANDCRAFTED LOG BUILDING

## The trade, the art, the history.

A handcrafted log cabin is a cabin built in the traditional way, using full round logs.

**At British Log Cabins we pride ourselves on our unique, specialist, artisan skills in producing beautiful buildings by hand from the raw material.**

Log building as a construction method and artform has been around for centuries. It's origins were in Eastern Europe and Scandinavia. As a trade it has a long established history...

"By stacking tree trunks one on top of another and overlapping the logs at the corners, people made the "log cabin". They developed interlocking corners by notching the logs at the ends, resulting in strong structures that were easier to make weathertight by inserting moss or other soft material into the joints. As the original coniferous forest extended over the coldest parts of the world, there was a prime need to keep these houses warm. The insulating properties of the solid wood were a great advantage over a timber frame construction covered with animal skins, felt, boards or shingles. Over the decades, increasingly complex joints were developed

to ensure more weather tight joints between the logs, but the profiles were still largely based on the round log."

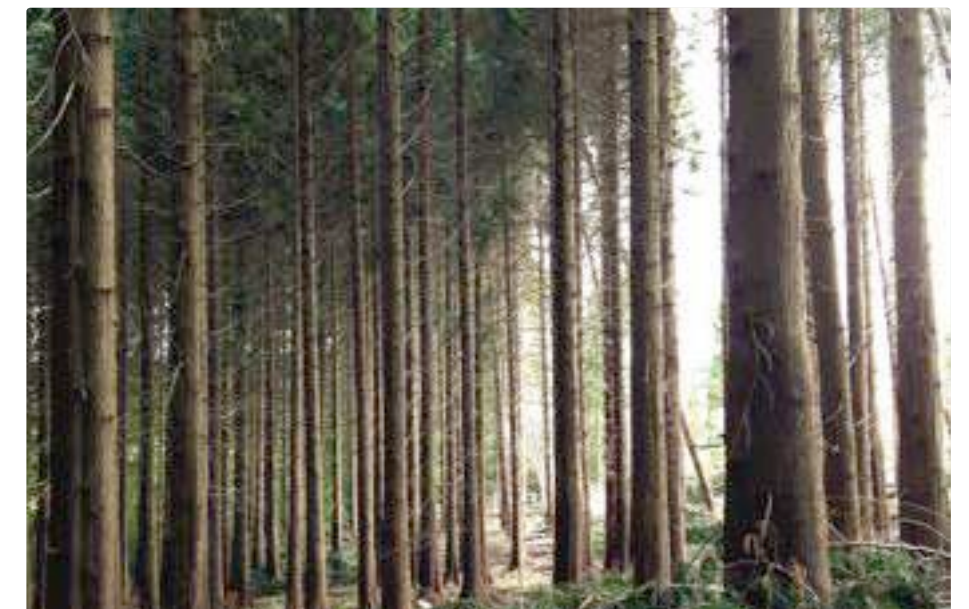
**Weslager, C. A.** (1969), *The Log Cabin in America.*

These skills mostly skipped over mainland United Kingdom on their way to frontier America. Medieval Brits tended to build with local stone, and hardwood timber frames, not having access to the abundance of faster

growing coniferous forests of Scandinavia or the much established softwoods to hand in North America. But since the evolution of commercial forestry and the introduction of suitable species into the UK this has been changing... this is where British Log Cabins steps in, using modern handcrafted log building techniques to provide character filled and sustainable log homes around a once deprived country.

### BELOW

**The raw material**  
A beautiful stand of sustainably grown timber perfect for log building.



### BUILT IN LOG

Scandinavian saddle notch on a handcrafted log home by British Log Cabins.







**The beauty of the log cabin is not only in its aesthetic form but in its function. Log building has come a very long way since its inception, but our need for shelter remains as important as ever, as well as looking at more sustainable buildings.**

The essence of log building is to use the materials around you, that are close at hand, to build shelter in order to survive. Due to the way the trade has evolved, this raw, natural need for shelter is evident in even the most elaborate log homes built today. The materials we use are the same as they were 400 years ago and the techniques are merely refined versions of those used by generations gone by.

**ABOVE**  
Handcrafted log home on a lake with an internal mezzanine level. Western Red Cedar construction.

**RIGHT**  
Beautiful woodland retreat with a covered deck.

Our team is trained with quality and accuracy as a priority, ensuring that you get the best product possible. We only use British grown, sustainably sourced and meticulously selected Western Red Cedar and Douglas Fir in the construction of our Handcrafted log cabins.



Our cabins are mostly built using the 'full scribe' handcrafted log building methods which means that each log is completely scribe fitted to the log below creating a weather tight seal. The most common of these is the Scandinavian saddle notch method (or rams head variation).

The saddle notch methods are by far the most extensively used in the log building industry today and are widely considered to be the premium of log cabin building techniques.

The beauty of full scribe log building methods is that every knot, hollow and contour of the log below is precisely fitted to the log above, creating seamless, airtight joints throughout the building. With meticulous attention to detail in all of our logwork the finished product is absolutely stunning with massive logs faultlessly joined together with minimal tolerance.

Due to the interlocking nature of the log cabin, the intricate notches used, and

“

The materials we use are the same as they were 400 years ago and the techniques are merely refined versions of those used by generations gone by.



**RIGHT**  
Post and beam porch on a woodland retreat with milled Douglas Fir decking boards.

**BELOW**  
Small woodland cabin with an insulated Cedar shingle roof, log burner and decking.



that the natural shape and size of the log is being preserved the handcrafted cabin is a stunning natural structure that will last for hundreds of years.

Most of our handcrafted log cabins are initially constructed in our log building yard in Shropshire. Once we have

completed the logwork we mark each log's position in the building and treat with timber preservative. We then take it apart piece by piece and load the lorry ready for delivery.

Once on site, the logwork quickly goes back together on your footings like a large jigsaw puzzle, an average log home taking only two weeks to reassemble.

As the cabin goes together the fitting team bore slots in the logs to conceal electrical and plumbing installations. When the log work is complete on your footings it is sanded, washed and treated with a second coat of preservative.

The finishing work can then begin...



# LOG HOME STYLING

A handcrafted log cabin is a beautiful thing. A handcrafted log home is another level of individuality that should reflect the functional and aesthetic requirements of the people who are going to live in it. Our log home specifications are completely customisable. From roof finishes to heating system, from floor coverings to window design we can come up with a home specification that suits you and your budget while meeting current building regulations. We also offer a very flexible building contract from log-work only, through to complete turn-key log home solutions. We can create stunning design features such as log staircases and handrails, log accents, built in furniture and mezzanine floor levels.

**CUSTOM CEDAR TRIMS**  
Fascias, soffits and barge boards are custom milled by us from the same trees used to build the log-work

**POST AND BEAM PORCH**  
Handcrafted post and beam porch with a slate roof breaking the line of the main elevation

**POST AND PURLIN ROOF SYSTEM**  
Utilising massive mortice and tenon joints the purlins are left exposed internally. The gable ends are clad in waney edge Cedar.

**SLATE ROOF**  
Warm deck insulated natural slate roof

**EXTRUDED GUTTERING**  
Low maintenance extruded aluminium guttering

**DOORS AND WINDOWS**  
High quality softwood, double or triple glazed doors and windows.

**STONE PLINTH**  
Natural stone found on site and used to clad the concrete block foundations.

**INDIAN SANDSTONE**  
Indian sandstone capping to finish off the stone plinth to the log work.

**All of the ingredients matter.**  
Right down to the last detail every element specified for your log cabin or log home adds individuality and character.



**The quality finish on the outside of your building needs to flow through to the inside.**

The internal specification of your log home, log cabin or any building for that matter should be approached with a lot of thought and analysis. How will you use the space? How can the materials and products chosen both make you feel at home and serve a practical purpose? How energy efficient are the appliances? The balance between budget and finish is an age old dilemma. Careful management of priorities can turn a modest budget into a dream home without too much compromise.

There are a few elements that we recommend and generally specify in our log homes including underfloor heating, a wood burning stove and hardwood flooring but all of the elements are completely changeable and many options are available during the specification process. If you want to sit back and let us manage the details and take care of the organisation, our turnkey package offers complete project management for absolute peace of mind. BLC manages the whole build, from footings to light fittings. We project manage from the onset including structural engineers, ecological surveys, building control approvals and energy calculations along with the specification and fitting of all materials.

If you would like to add extra flare to the finished home we also have an interior designer on hand to help with decorations and soft furnishings. A great advantage to turnkey packages is that all communications are with one company, this allows you to oversee the project from a distance being consulted only



**RIGHT**  
360 degree log stove set on an old mill stone found on site.

**LEFT**  
Lounge / diner with a high end finish including a log spiral staircase leading to the mezzanine level.

**BELOW**  
A light and airy kitchen with solid timber units and a ceramic sink.



on the details that matter with all intricacies ironed out behind the scenes. Most people work full time and have family commitments that prevent them from building their own home.

We offer a flexible approach towards our home building packages, allowing you to pick and choose which elements that you would like us to provide and which you would like to complete yourself (or to use your own trusted trades to complete). See our price guide for a standard specification and inclusions.

**RIGHT**  
Luxury en-suite bathroom with slate tile floor and traditional roll top bath.





# TAKE CONTROL

## You: The project manager.

### LOGWORK ONLY

A logwork only package includes just that, the handcrafted logwork built to ILBA\* standards. Most logwork only packages include reerection on site, but we can also supply the handcrafted logwork as a kit, numbered and supplied with a plan for reassembly. We also supply detailed drawings of how to fit doors and windows into the logwork and offer advice on log building specific construction techniques. The log work only option takes advantage of our specialist skills whilst allowing you to choose other trades and finishes yourself, project managing the build from start to finish. Logwork comes from our yard treated for wet rot, dry rot and wood boring insects leaving the final UV/pigmented treatment to you. All door and window openings are cut and recessed to allow for shrinkage.

**Please see price guide for a standard inclusions in a logwork only contract.**



**ABOVE**  
Roof going on  
a log home.

### SEALED SHELL

This is our most popular contract. BLC provides the logwork, warm deck, insulated roof and energy efficient doors and windows so that you can take the project to completion with a roof over your head. We offer many different roof finishes (see page 18) and use a wide range of joinery suppliers giving you plenty of options to

determine the finished effect of the building. If you want to save money by managing the project yourself but want to have confidence in getting to the sealed shell stage then this is for you. We can offer great value for money in getting you to this stage of your project.

**Please see price guide for a standard inclusions in a sealed shell contract.**

**BELOW**  
3 bedroom log-work  
only project  
delivered on site.



“

We have found BLC staff helpful and considerate at all times and would be willing to allow others, thinking of installing a similar shelter, to visit our site by prior arrangement.

**John Lane**  
Woodland Shelters, John Lee  
Wood Scout Campsite, Leics.





**LEFT**  
A 4m x 3m cabin  
built at a school in  
Worcestershire.

**BELOW**  
Floor joists fitted  
into the foundation  
log with a slot cut to  
accept the flooring.



# WOODLAND & GARDEN CABINS

**In your woodland...** A log cabin is a permitted development in your woodland, adding not only value but amenity and enjoyment.

**A** woodland cabin is a fantastic investment, adding not only monetary value to your woodland but also enjoyment and amenity, for occasional camping use and secure storage of materials and tools. A woodland cabin allows for the enjoyment and use of your woodland year round. Have a log burner fitted and a couple of bunks and get back to nature! A woodland is the perfect, natural setting for a handcrafted log cabin.

Even better if the trees in that woodland can be used to build it. Given the right species and specification is available we can fell the trees in your woodland, strip the bark by hand and build you a woodland shelter on site.



**BELOW**  
Small cabin with a turf  
roof set on a steep  
bank, built from trees  
felled on site



## BLC SURVEY

If you would like us to conduct a survey of the timber on your site to determine its suitability we can arrange this. If it turns out that the timber in your woodland is not suitable then we can source the timber elsewhere, build the cabin in our yard and then deliver it to site. We are very good at getting around problems with access, we have built cabins on steep banks in dense woodland, miles from a road.

**With the right planning and equipment any project is possible.**

## APPLICATION

The Town and Country Planning Act 1990 allows for development in woodlands to facilitate the management and development of those woodlands. The application is a simple process, a short form to fill out describing the nature, size and location of the building followed by a 28 day notice period. We can fill out the form for you or you can get one from the council and do it yourself.

**If you are looking for a patch of woodland there are many agents around specialising in the sale of small woodlands.**

## METHODS

A woodland cabin is suitable for all of the building methods that we offer; post and beam, handcrafted log or timber frame. The style and specification is entirely up to you. We will provide you with options for floor covering, level of insulation, type of footings and door and window styles along with design options such as covered decks, enclosed storage areas and built in bunk beds. We really do offer the opportunity to build your perfect, natural woodland retreat. See our example plans and price guide or get in touch for more info...



**PICTURED**  
A log burning stove is  
an essential addition to  
a woodland cabin.



**PICTURED**  
A 7m x 4m  
woodland cabin  
in Chepstow.  
Footings built  
from rocks found  
on site, the trees  
were also felled  
in the woodland  
where the cabin  
was built.

## Steps to take:

- Buy a piece of woodland
- Contact BLC for a site survey
- Commission BLC to design your cabin
- Send Prior Notification to Council
- Wait 28 days
- Order your log cabin!





## In your Garden...

Adding space, functionality, style and real value to your property. A garden cabin from BLC is the quality choice.



### LEFT

An extension of your home. Your garden cabin can be finished to luxurious standards.

### RIGHT

Custom post and beam garden room with a large deck and a sedum roof.



“

I think I spend more time here than I do in my house!

Robin Sandow

## Have you ever wanted a retreat at the bottom of the garden?

Do you work from home and need extra space for an office? How about workshop? A gym? Or a bunkhouse for the kids? Look no further. We can create beautiful handcrafted log cabins, profiled round log cabins and post and beam structures of any shape and size, for any purpose.

In the curtilage of your home you are permitted to have a development 4m in height without planning permission provided that all of the limits and conditions are met. The total area covered by out buildings cannot exceed 50% of the grounds of your house. For more information and up to date revisions to the permitted development rules in the UK please see the Planning Portal website.

### HANDCRAFTED LOG CABIN

A handcrafted log cabin offers a brilliantly different way to extend your house into your garden. A solid and natural feature to your property, adding value and style.

### CUSTOM DESIGN

We provide custom designs to accommodate any use so regardless of your needs or space requirements we can come up with a solution. See page 20 for more information on our custom design service.

### PROFILED LOG CABINS

We also offer a range of profiled log cabins with uniformly rounded logs. These can be built with a log diameter of 160mm to 300mm.

All of our profiled round log cabins are also custom made. The benefit of a BLC profiled log cabin is that you get the clean, modern lines of a round log cabin but we still cut all of the joints by hand (rather than by machine) ensuring the accurate, hand scribed fitting of each log in the building.

### POST AND BEAM OPTIONS

Our post and beam buildings are also offered as either a kit or as a completed project. The post and beam option tends to come out slightly cheaper and can be built more quickly. Post and beam buildings can be styled either modern or rustic with a range of cladding, roofing and internal finish options.

“

We are really pleased with our garden room, it is a lovely warm and peaceful retreat. You have a great team who we felt really comfortable with and who answered our many queries with patience and good humour. Jane Davies-Slowik - Post and Beam garden room, Harbourne



**FAR LEFT**  
Profiled post and beam exterior detail.

**LEFT**  
Custom designed, profiled workshop.



**Choose your roof.** A large part of how your building will look from the outside is dependant on the roof finish you choose. Here are some of our most common roofing options.

# A ROOF OVER YOUR HEAD

**ROOF STRUCTURE**  
A post and purlin roof structure, raftered and ready for batten and slate.

The type of roof specified will add a certain character to the building, whether this is to fit in with surrounding buildings or to blend into the surrounding natural environment.

With this in mind, at BLC we offer a wide variety of roofing solutions for your cabin or home. The standard roof finishes that we offer are detailed below. This range is always being developed so please ask for further options.



## NATURAL SLATE

Nothing is better than a well sourced and properly fitted slate roof. Used in the UK since Roman times this hardy roof covering is long lasting and has the look of pure quality.



## CEDAR SHINGLE

Giving a lovely, warm look to the building Western Red Cedar shingles will last 30-50 years or more. We use only Blue label shingles on our log homes which are 100% heartwood.



## SEDUM

Blend completely into the natural surroundings. A sedum roof is a living green roof. They are low maintenance (no moving required) and drought tollerant.



## CLAY TILE

Available in a variety of colours and blends, traditional clay tiles add a high quality, very durable finish. The colour options allow for a distinctive contrast with the log-work.



## PROFILED STEEL SHEET

Profiled steel sheets come with a wide choice of colour and profile, with a hard plastic coating will also stand the test of time. We now also supply profiled Coreten roof sheets.



## OTHER?

If you want something a little different we can fit any type of roof to our log cabins whether it be thatch, zinc, weathering steel, profiled slates or pan tiles. Just get in touch and let us know your ideas.



# PLANNING & DESIGN



**PICTURED**  
Custom designed  
3 bedroom log home  
in progress.

**Abraham Lincoln, probably the most famous man ever to live in a log cabin once said:**

“  
Give me six hours to chop down a tree and I will spend the first four sharpening the axe...”

...Clever bloke. Planning and design are important in any task. At British Log Cabins we understand the importance of getting the design of your log home right. We charge a flat fee for initial CAD drawings based on a design brief, which we help to develop.

Offering a design and build service means that the same team that designs your log cabin or log home, also writes the specification and manages the construction team through to completion. This allows a smooth workflow from pencil to chainsaw.

Our drafting and design service fees are refundable upon placement of the order for your building and include:

- Scaled floor plans and elevations
- Initial draft plans and first 3 revisions
- Specification of materials and full quotation  
Please see our current price guide for service fees

If you would like further assistance on the planning side of your project we also offer:

- Site plans
- 3D rendering
- Full construction (building regs) drawings
- Structural and energy calculations
- Planning consultancy
- Access statements and planning submission



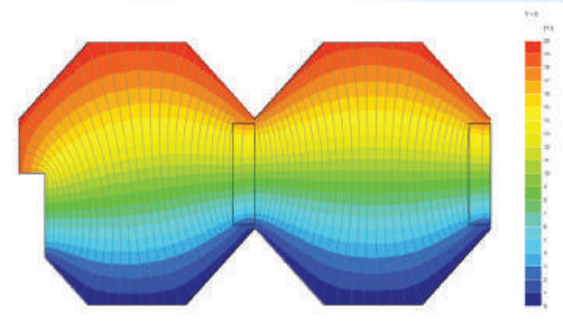
## THE PROCESS

Generally the first step is to seek planning advice. Planning consultants in the locality of your site are generally the best equipped to help, they will have the best grasp of the local development plan and have a good idea of the local council's interpretation of planning policy.

Alongside getting advice on what you are allowed, you need to determine what you want. This is where we can help... some customers have already sketched floor plans and picked out the kitchen. Others need more guidance, either way we are there to offer advice in both design and specification to achieve the outcome that best suits your needs. We will arrange a meeting with you, either in our yard in Shropshire so that you can see the team at work and drink tea in our handcrafted log office, or on your site so that we can look at the specifics of your project. In this initial meeting we will come up with a design brief to produce your initial draft plans. Once you have your draft plans we will go back and forth until you are completely happy with the design.

If permission is already in place or your cabin qualifies as a permitted development then at this point we can draw up a contract, take your order and begin construction.

If you require planning, your drawings will need to be submitted to the council for approval, once permission is granted, we can then proceed with the project.







**BUILDING REGULATIONS**

UK Building Regulations are a set of minimum standards for the design and construction of buildings. They ensure the health and living conditions of people in and around those buildings. Fuel and power conservation is paramount in current regulations with strict standards applied to the external fabric of the building.

At BLC we have invested heavily in research and development to ensure that our log homes pass and exceed building regulations standards. We have developed unique construction details to minimise thermal bridging and carried out extensive thermal modelling to collate the necessary data on our construction methods to be able to prove their efficiency correctly.

**CODE OF SUSTAINABLE HOMES (CSH)**

The CSH is a UK government initiative to drive change in home building practice. It is a measure of key elements in design and construction that affect the sustainability of a new home. The CSH is the national standard for sustainable homes, used by home designers and builders as a guide to development.

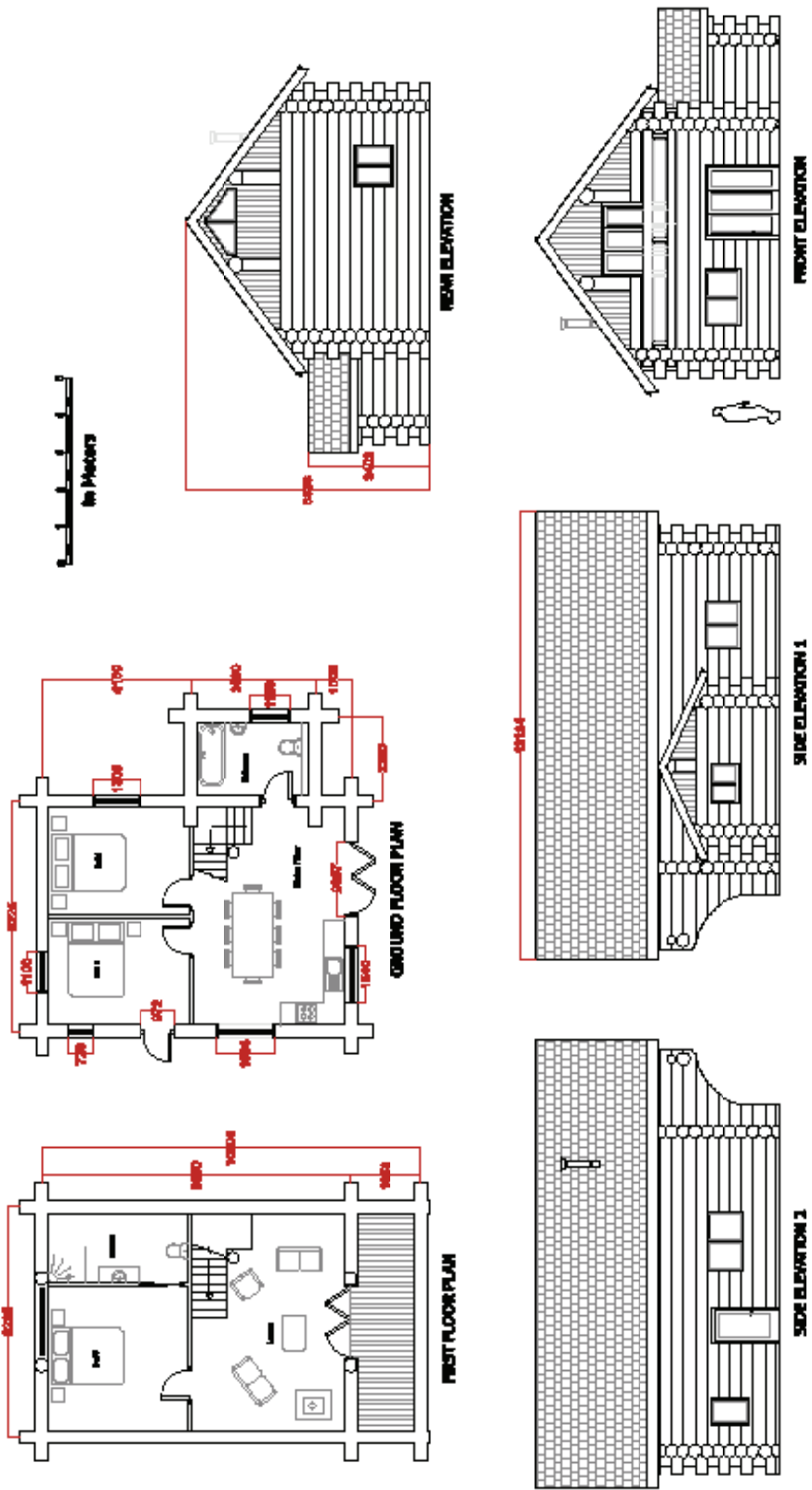
If the construction industry builds the homes required (in the UK), by 2050, as much as one-third of the total housing stock will have been built between now and then!

Almost 50% of the emissions in this country are created by construction and household energy use. This provides a massive opportunity to make a real difference.

At British Log Cabins we are committed to being a part of this progress and have already completed projects complying to CSH. All of our designs and specifications incorporate CSH design methods and requirements. The Code of Sustainable Homes is not only concerned with insulation and energy consumption but also water conservation, material selection, surface water run off, waste management, ecological impact, health and well being and security.

“BLC were very helpful with the initial plans, building regs and general preparation before the job started. They did an excellent job and were great to work with. The quality of workmanship is very good and we have complete confidence in them.

Robert Price - 2 bedroom log home, Shropshire.

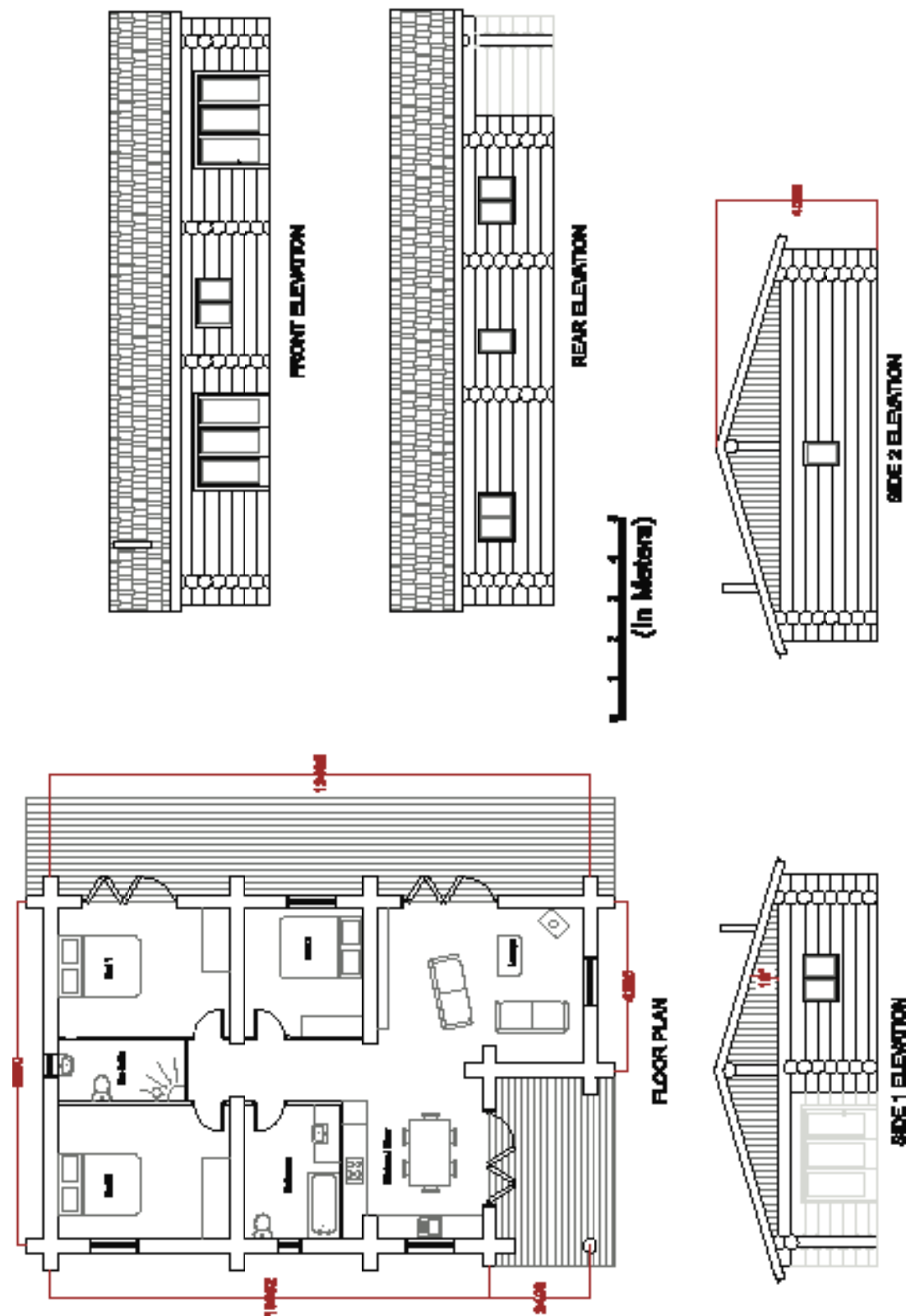


**FOREST LODGE 3**

A gorgeous handcrafted log cabin with great proportions, this design is suited to a location with dramatic views with a 1st floor lounge leading to a covered deck. The three bedrooms are spacious and the master bedroom on the first floor benefits from an en-suite.

N° OF BEDROOMS	3
EST. FLOOR AREA (M²)	54 + 48
SCALE	Do not scale

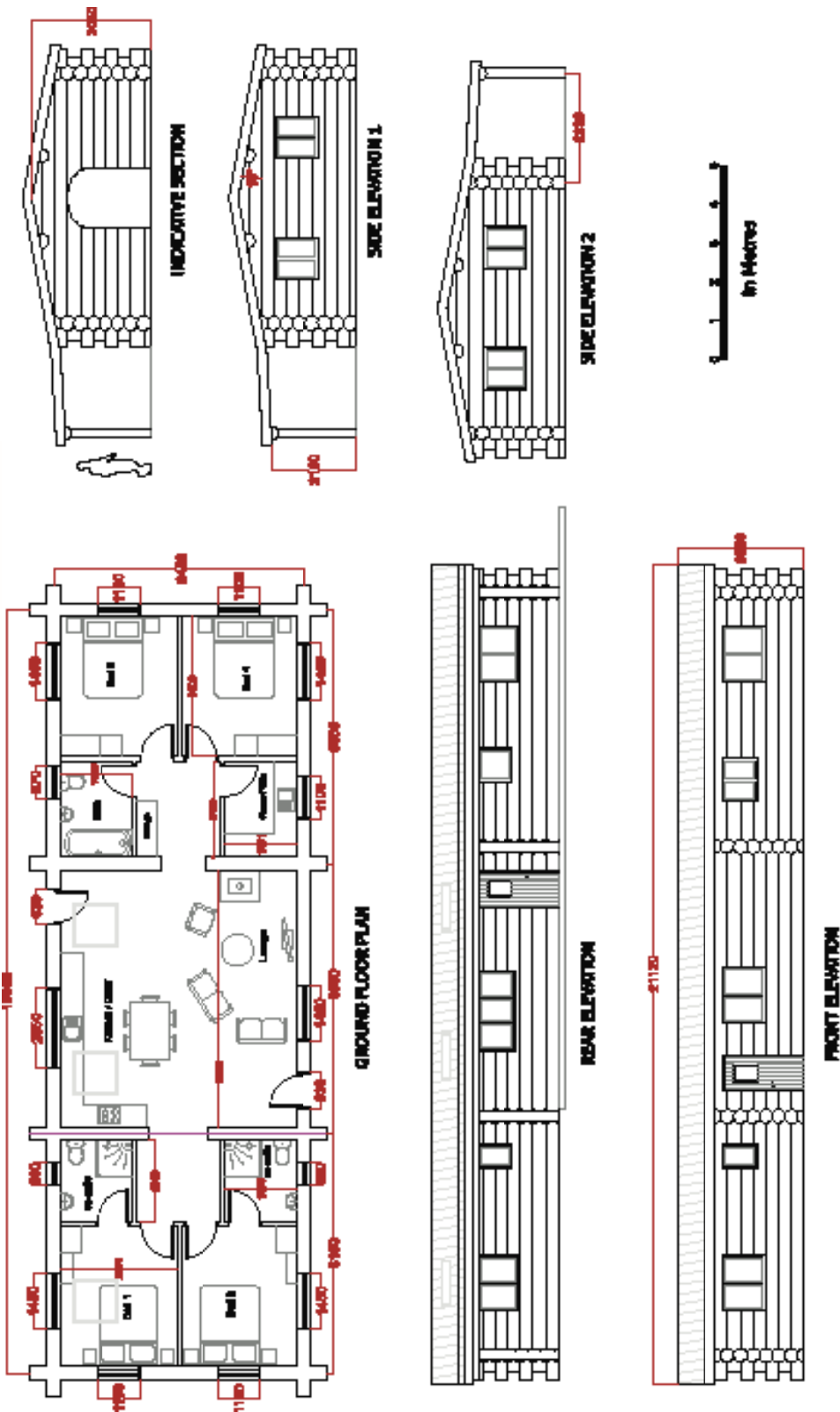




**BAWLEY VALE**

This design is focused on indoor / outdoor living with expansive decking to the front and a covered outdoor eating area off the kitchen. Lots of internal log walls ensure the rustic character continues throughout.

N° OF BEDROOMS	3
EST. FLOOR AREA (M²)	98
SCALE	Do not scale

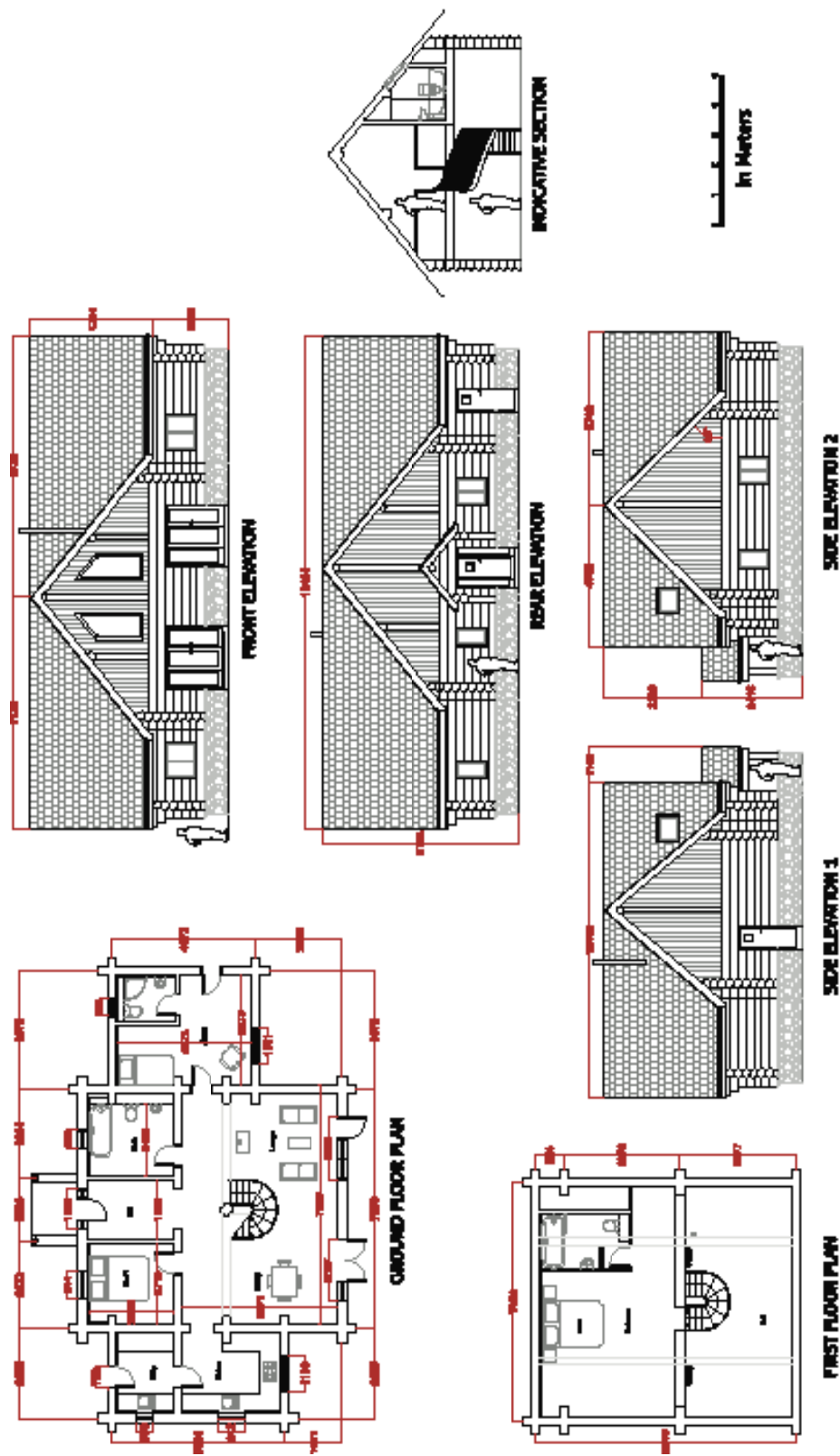


**KAREELA**

Fantastic 4 bedroom, 3 bathroom log home with frontier styling. This home has a post and beam porch to the rear elevation and includes a utility room, and open plan living with carved archways separating the bedroom areas. Lots of exposed log work internally with full log gables also featured on the 2 internal log walls.

N° OF BEDROOMS	4
EST. FLOOR AREA (M²)	117
SCALE	Do not scale

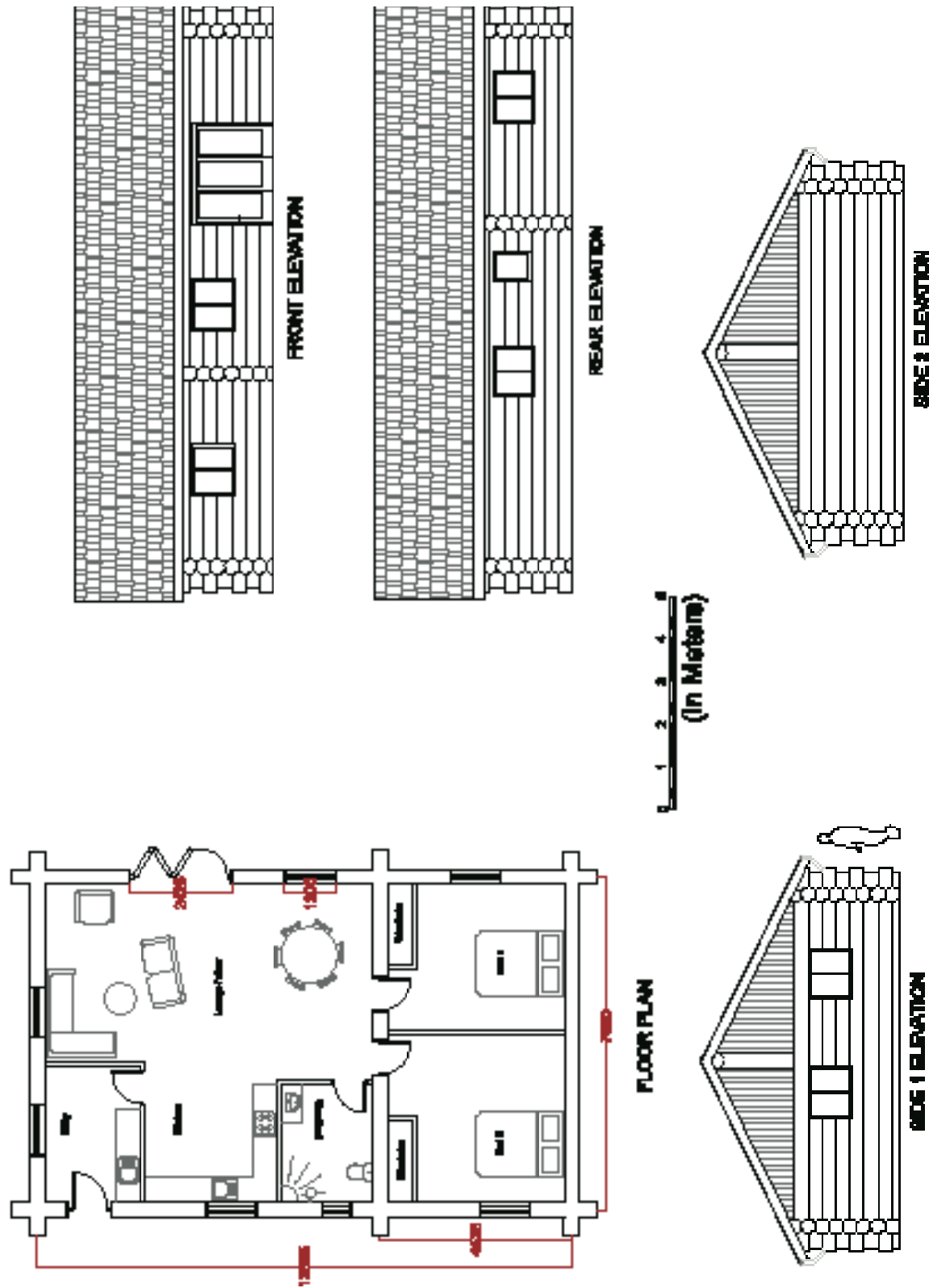




**LLANGEDWYN**

This 3 bedroom, 3 bathroom log home handcrafted log spiral staircase taking you up to a generously proportioned master bedroom with en-suite. The 3rd bedroom is designed as an annexe with its own external door. The door into the utility offers a wet weather entrance.

N° OF BEDROOMS	3
EST. FLOOR AREA (M²)	95 + 40
SCALE	Do not scale

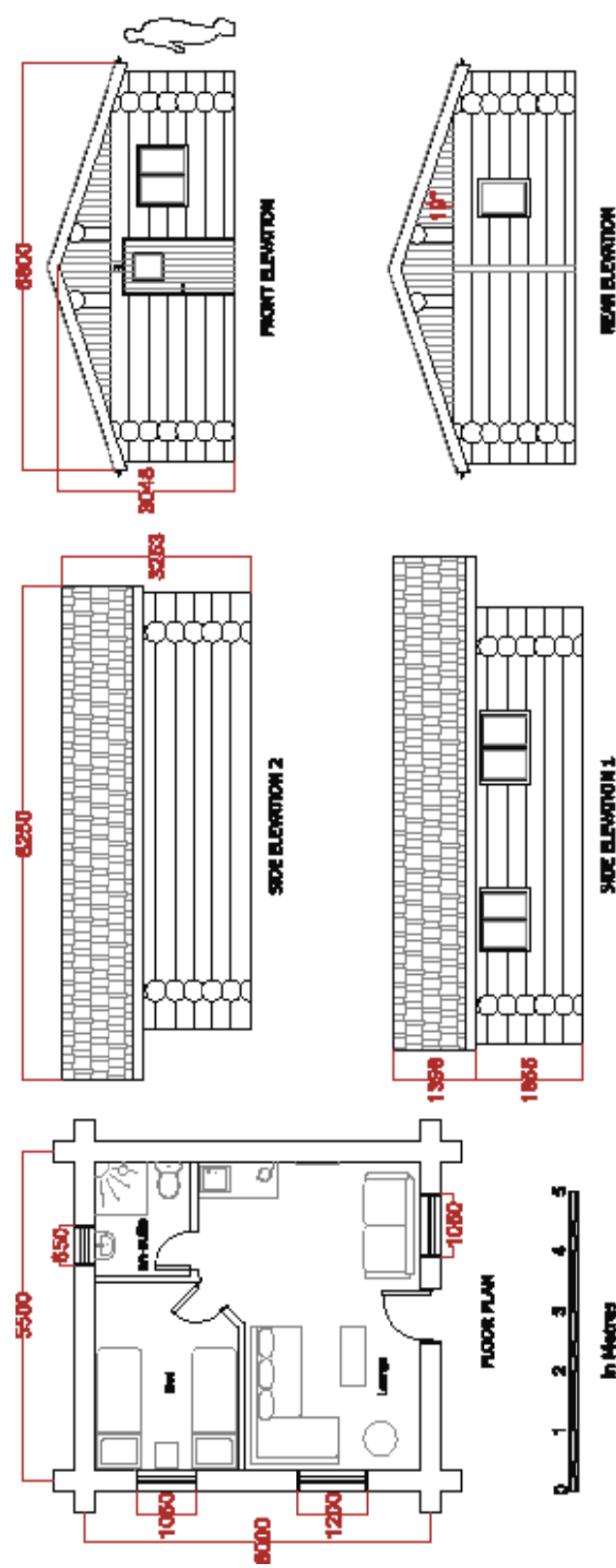


**MOLLYMOOK**

Simple and spacious this 2 bed, 1 bath log home offers open plan living with a rear entrance through into a utility. The spacious lounge feels even more open with the inclusion of bifolding doors.

N° OF BEDROOMS	2
EST. FLOOR AREA (M²)	91
SCALE	Do not scale

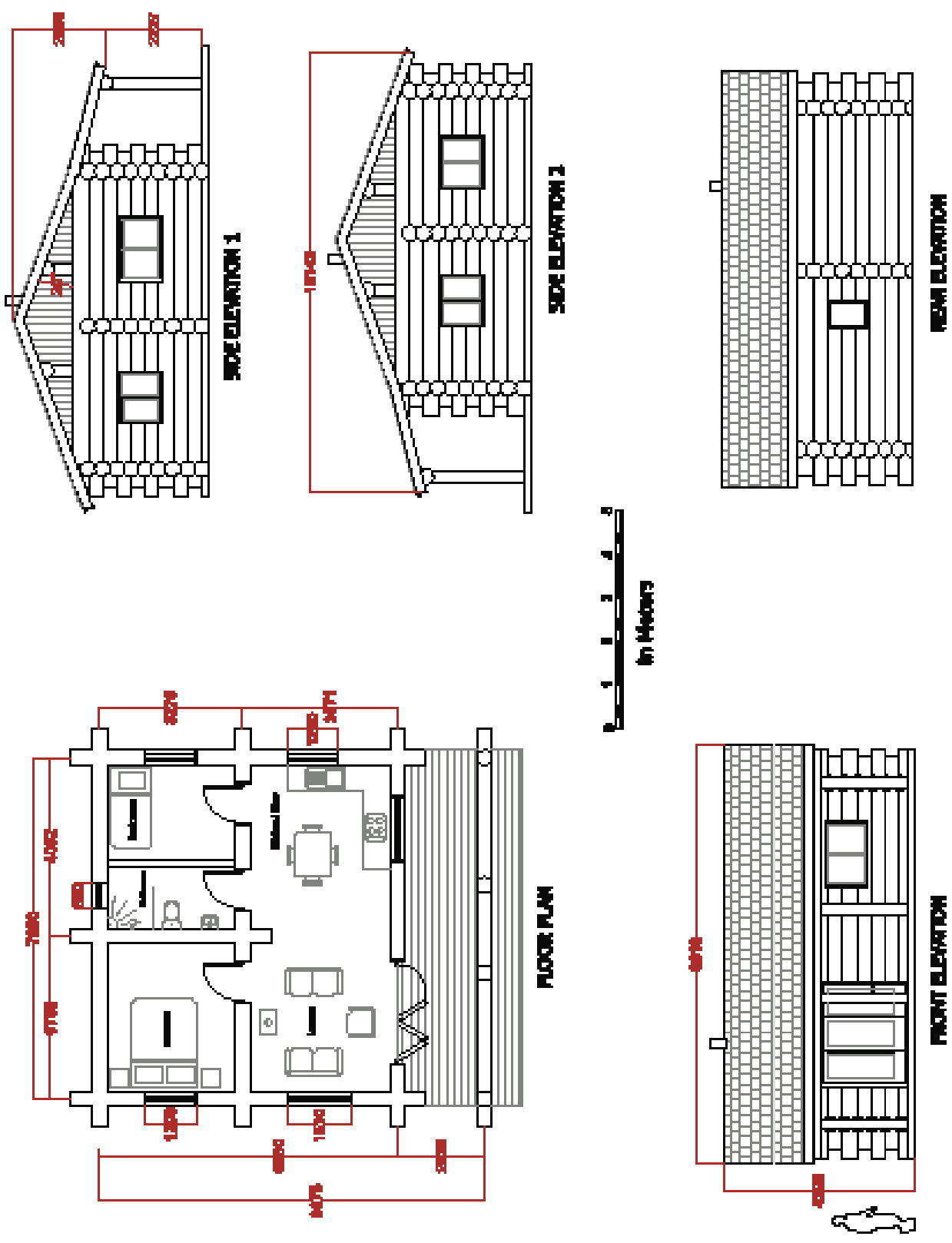




**SIMPLICITY**

Designed as a glamping cabin or garden annexe this cabin can be supplied to conform to the Caravan Act - being delivered in two halves. The intention is to include a sofa bed in the lounge room to accommodate 4 guests. Rustic and basic a micro kitchen built from Western Red Cedar and full bathroom with enclosed shower pod.

N° OF BEDROOMS	1
EST. FLOOR AREA (M²)	29
SCALE	Do not scale

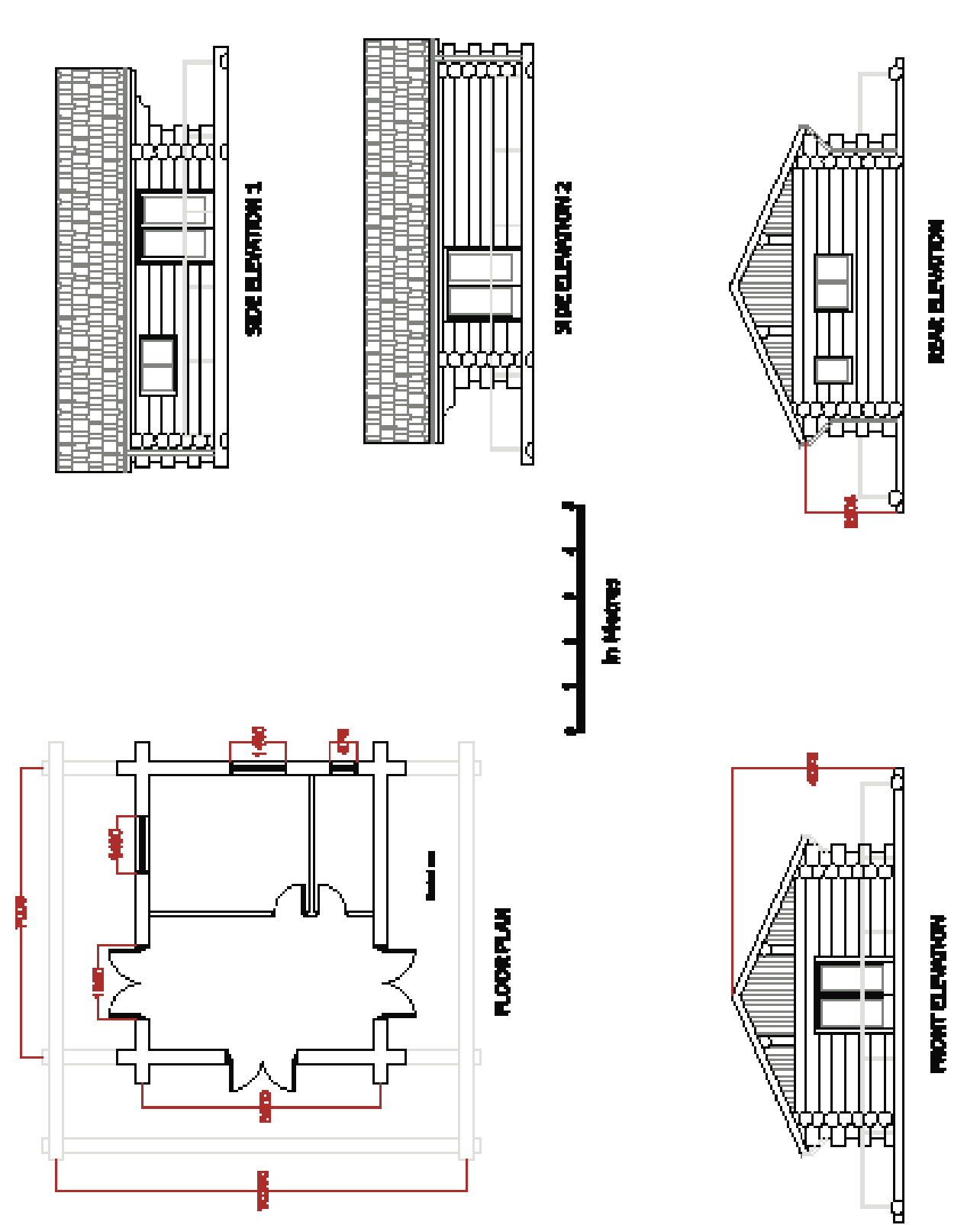


**WOODLAND RETREAT**

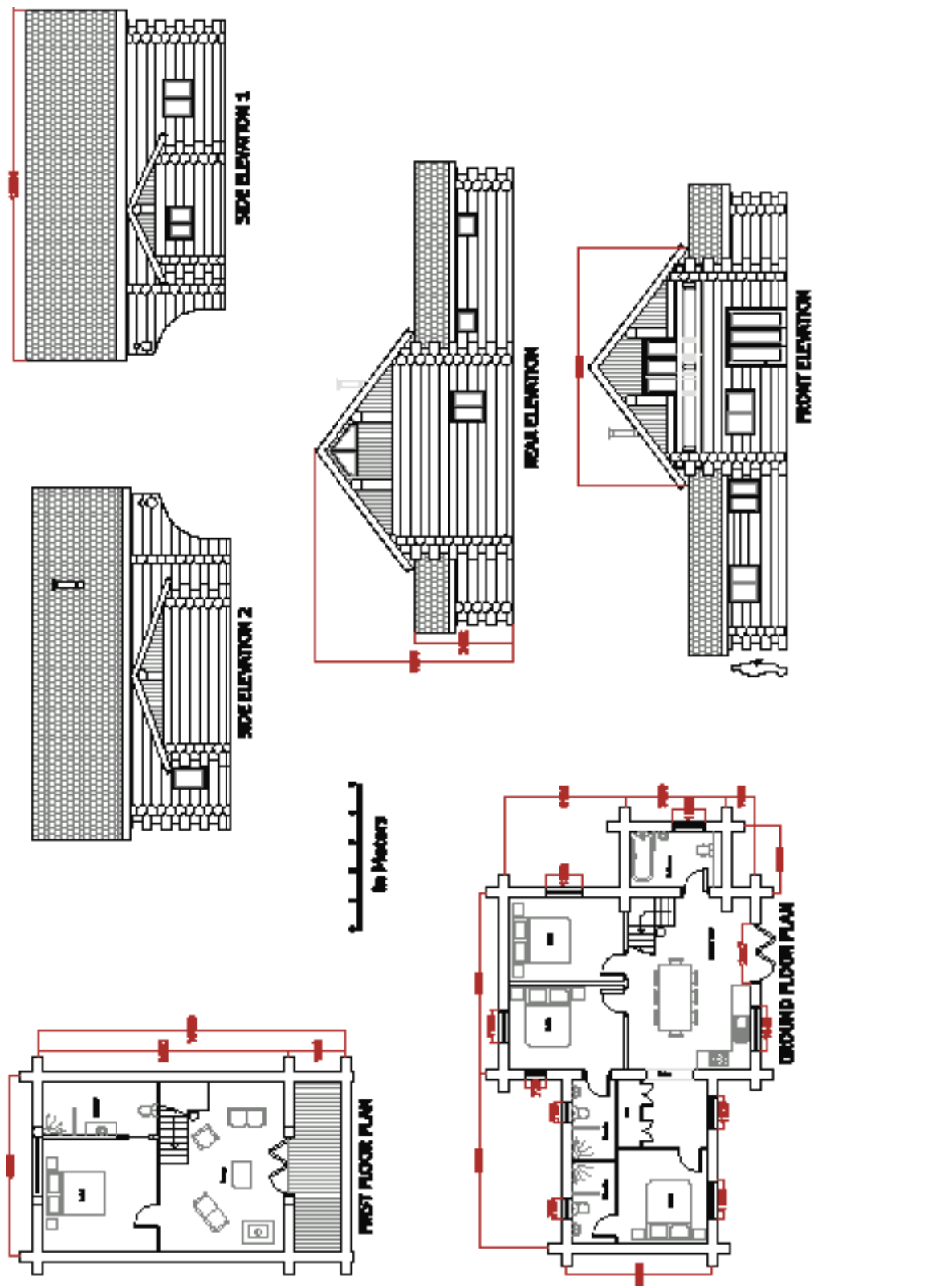
A perfectly proportioned frontier style log home, all you need is a rocking chair! The substantial post and beam porch is a great feature, fantastic for alfresco dining. 1 double bedroom and a bunk room with internal log walls running in both directions.

N° OF BEDROOMS	1.5
EST. FLOOR AREA (M²)	48
SCALE	Do not scale



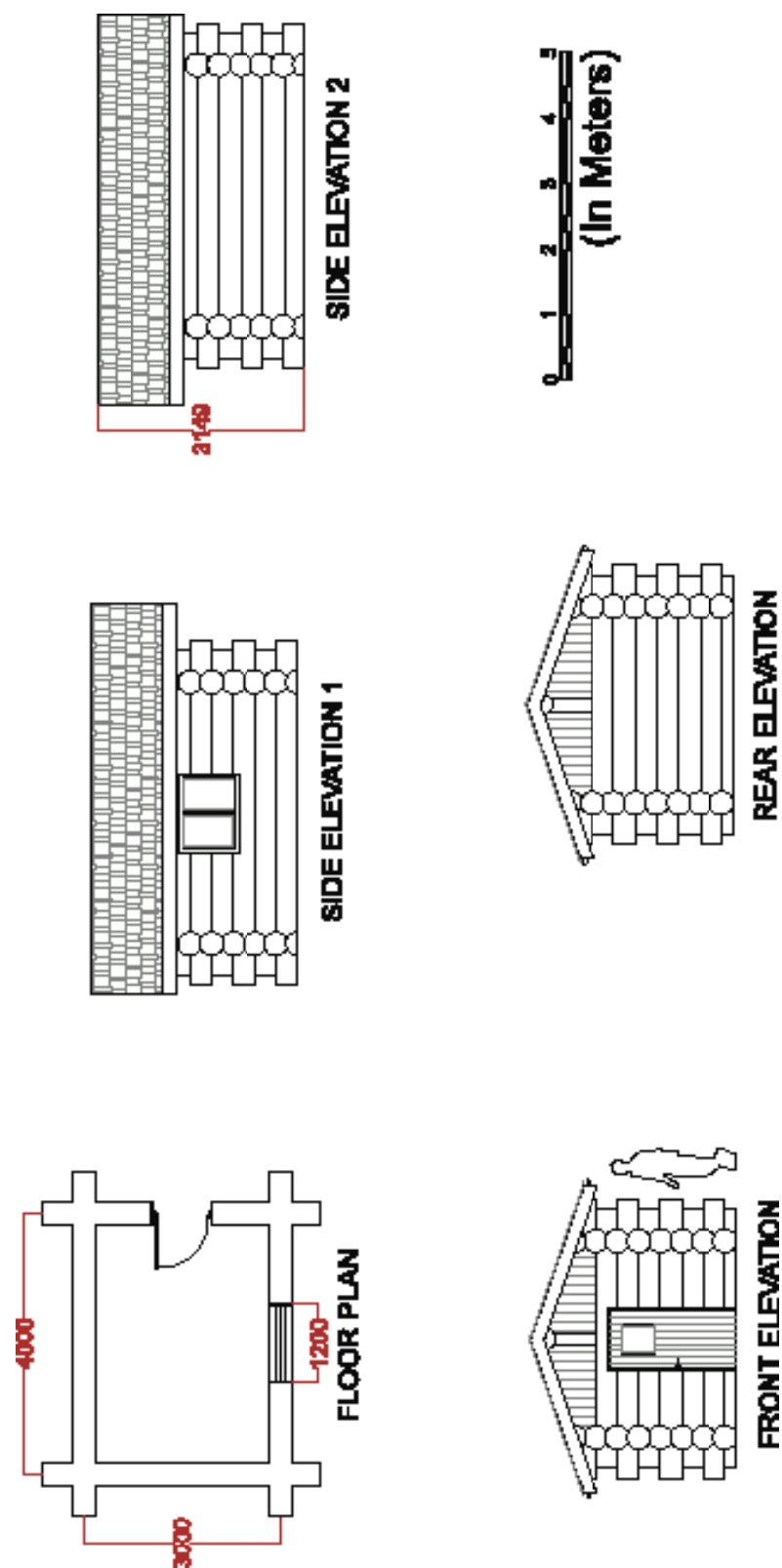


<b>PRAIRIE</b> A flexible floor plan, in this space you could fit a 1 bedroom annexe, a gym or a large home office. The main room opens out onto a wrap around deck supported by the foundation logs. The balustrade can be constructed in tenoned hazel for the rustic effect or toughened glass with a log capping.	<b>N° OF BEDROOMS</b> N/A
<b>EST. FLOOR AREA (M²)</b> 37	
<b>SCALE</b> Do not scale	



<b>FOREST LODGE 4</b> The big brother of the 'Forest Lodge 3' this handcrafted log home has an additional wing offering another bedroom, two en-suite bathrooms and extensive storage. The three separate roof pitches make this a really eye catching design.	<b>N° OF BEDROOMS</b> 4
<b>EST. FLOOR AREA (M²)</b> 80 + 48	
<b>SCALE</b> Do not scale	





<b>SIMPLE 4x3</b> The perfect garden office, summerhouse or woodland shelter. We call this the simple cabin because it only has 4 logs in its design, simple. Simple cabins are available at up to 7m x 7m.	<b>N° OF BEDROOMS</b>	N/A
	<b>EST. FLOOR AREA (M²)</b>	9.7
	<b>SCALE</b>	Do not scale



**PICTURED**  
A boiler house and biomass fuel store in Suffolk

# BOILER HOUSES & TIMBER FRAMED BUILDINGS

We don't just build with logs...

We are skilled in all aspects of carpentry and make custom timber buildings of any construction. Our boiler houses are framed in 150mm x 150mm Douglas Fir and clad with either waney edge (pictured) or v-groove Western Red Cedar cladding. The solid security doors are manufactured by our talented local blacksmith.

Our boiler house design includes two separate rooms, one is the timber framed boiler room and the other is a

concrete block fuel store, both sections are finished externally using the same boards to create a continuous building. The fuel store access is via a large hydraulic lid to allow for easy loading. This design was created in partnership with Nexus Energy, a leading supplier of biomass boilers across the UK. This construction method also lends itself to carports, garages and workshops.

**Please get in touch with your ideas.**





# QUESTIONS & ANSWERS

Here are a few of the most commonly asked questions we get from our customers. If you've any further questions about log building and our processes please get in touch.

## DO I NEED PLANNING?

Any building for use as holiday lets or as a residential dwelling requires planning permission. The only exception to this is under the remit of the Caravan Act 1968. We are able to supply log homes under this requirement but they do have to meet specific criteria. Buildings within the curtilage of your home or in woodlands can be regarded as a permitted development. For planning advice it is best to seek a local planning consultant with an overview of what you would like to achieve. We have planning consultants that we use regularly and will be happy to put you in touch with them. We can also offer to manage the entire process if you prefer.

## WHAT SHOULD I TREAT MY CABIN WITH?

During the construction process we treat every log for wet rot, dry rot, wood boring insects and fungus. We also recommend to treat the cabin against the weather (i.e. sunlight and water). We have used many brands and treatments in the past, the decision is ultimately down to your preference and your desired finish. We recommend using a timber treatment that protects well from the weather, has a satin finish and does not alter the colour of the timber too dramatically. You can always go darker, but going lighter in colour at a later date is very difficult. We have the UK distribution rights to Perma-Chink products; Perma-Chink offer the best all round range of log home treatment, sealant, maintenance and repair products. Get in touch with us or see their website [www.permachink.com](http://www.permachink.com) for more details.

## HOW LONG DOES IT TAKE TO BUILD A LOG HOME?

An average 2/3 bedroom log home will generally take:

- 4/8 weeks to source the timber
- 8/12 weeks to construct in our yard
- 2 weeks to assemble the log work on site
- 3/4 weeks to fit the roof (depending on finish)
- 2 weeks to fit door and windows.

Construction through to completion including kitchen, bathrooms, floor and wall finishes, electrics, plumbing and landscaping has so many variables that it is difficult to quantify, however as a ball park a turnkey project would on average be completed in around 12 months.

## WHAT ARE THE STAGE PAYMENTS?

As an example, for a sealed shell project the stage payments are as follows:

- 40% deposit
- 20% at 4 logs in height in our yard
- 20% on delivery
- 15% when the roof is complete
- 5% on completion

## WHAT TYPE OF FOOTINGS DOES A LOG CABIN NEED?

Handcrafted log cabins are very versatile in the type of footings that can be used. Due to the way that the building is constructed each log acts as its own 'lintel' so a log wall can span between pier footings or strip footings easily.

On a small cabin we generally specify pier footings because they are simple, reasonably inexpensive and work well on both flat and sloping sites. With a full log home we opt for a full footing and concrete slab. This makes it easier to properly insulate (minimising thermal bridging) and allows for installation of underfloor heating within a screed which is our preferred convection method in a log home.

The depth of the footings will depend upon the ground where it will be sited and the foundations will ultimately have to be passed by a structural engineer. However, as an indication - work on the following for a long home: 400mm wide, 1000mm deep reinforced footing under each log wall. 150mm deep reinforced concrete slab throughout. 3 rows of engineering bricks underneath each log wall to bring logs up to finished floor level. (This allows for insulation, underfloor heating and a liquid screed sub floor finish). Footings are not included in any of our example prices due to the variation from site to site.

## CAN YOU GET A MORTGAGE ON A LOG HOME?

Banks will lend for a log home project. As with a lot of self build mortgages you will need structural warranty insurance in place. If you plan to borrow to fund your project then this needs to be taken out in advance (on completion of the design stage). It is much cheaper at this point than it is to add the insurance retrospectively.

## DO YOU HAVE A PER SQUARE METER PRICE?

It is very difficult to quote per square meter as there are so many variables that can affect the cost of a log building. Two cabins could be an identical size but differ in price by 50% due to the complexity of the design.

If you have an idea of the size or a rough plan of what you would like us to build then we can provide you with a speedy estimate and suggest design features that will enhance the building.

For example pricing please see the price guide enclosed, an up to date price guide is always available on our web-site to download.

## WHAT ABOUT CONTRACTS?

We take our contracting very seriously. Our building contract has been written by an established firm of solicitors and is backed by their expertise.

The contract is constantly evolving as we come across different situations and needs of customers. Our contract is written with fairness in mind.

The main thing that a good building contract provides is peace of mind, log building is not a small investment but you can rest assured that it is a safe investment with our contract in place.

## HOW LONG WILL MY LOG CABIN LAST?

The short answer is hundreds of years! There is no reason why a handcrafted log cabin will not be inhabited by your great grandchildren. Handcrafted cabins and homes constructed from Western Red Cedar will certainly outlast any other timber building on the market.

Like any other building a log cabin requires maintenance. The more you look after it, the longer it will last. If treatment is applied every 2/3 years to protect from the weather, foundation timbers are kept out of the ground, gutters kept clean and clear and larger upwards facing checks are filled there is no reason why the building will not last and last.

We give advice to each of our customers as to the best way to look after their cabin and let them know things to look out for when carrying out maintenance work.

Western Red Cedar is renowned as being a premium outdoor timber. If protected properly in a well designed building however a larch or douglas fir building will provide cosy shelter long after we have all disappeared. We offer an unlimited guarantee on our logwork (subject to terms and conditions, including an annual maintenance contract).

”

If you want a quiet life, don't go for a British Log Cabin home... since building ours, we have been inundated by visitors - including complete strangers who want to have a look! Thank- you guys for helping to make our dream come true... we have a completely unique, stunning, energy efficient home.

Karen Corr and Bond Hardman  
2 bedroom log home, Lancashire



# LOG BUILDING COURSES

Thinking about building your own handcrafted log home or log cabin? Fancy a career change? Or just want to try something different?

“Martyn, Dan and team Thank you all again for making the 2 week course so memorable and fulfilling. Difficult to explain the impact it has had except to say that experiencing such enjoyment, great company and wealth of knowledge will stay with me forever and am confident will change the course of my life.

Nick Mitchell  
Log Building Course, June 2015

Log building requires a completely unique set of skills from selecting the logs and stripping off the bark, to scribing and cutting them out accurately and efficiently.

At BLC we want to share our skills and knowledge to help expand our industry in the UK. We want to bring handcrafted log construction into the public eye, and help it to become a more mainstream building method. The materials that we use are sustainable and the structures we build are solid, stunningly beautiful, and last for hundreds of years. Log building is great fun whether you want to use the skills in your own project or if you want to make a career out of it.

We run at least one course each year covering the basics of log construction and are currently developing further courses in advanced log building and short course experiences. Once you have completed a two week course you will have the knowledge and basic skills to be able to build a simple four sided log structure with log gables or post and beam roof.

## THE COURSE COVERS

- Log building hazards and safety
- Log selection
- Log stripping
- The principles of building from log centres
- Cutting your half logs
- Rough scribing and scribing
- The Scandinavian saddle notch
- Cutting out (Chainsaw)
- Cutting out (Axe and hand tools)
- Cutting a roof
- Cutting out and rebating for doors and windows

## PREREQUISITES FOR THE COURSE ARE

- Chainsaw certificate (min. maintenance and crosscut)
- Supply of your own chainsaw appropriate PPE
- Passion to learn new skills
- A reasonable level of physical fitness
- Your own chainsaw (optional)

## INCLUDED IN THE COURSE

- Exclusive written course booklet and lifetime subscription to updates
- Professional Log Builders to teach and supervise the course
- Timber for practicing select skills and for the construction of the course cabin
- All tools and fuel
- Certificate of competence upon completion

There is a lot of information to cover in the two weeks, so it is quite intensive. On the course you will learn the unique skills involved in traditional log building from stripping logs to scribing as well as accurate chainsaw skills and axe work, all using the Scandinavian saddle notch method as approved by the International Log Builders' Association. During the course we will work on the construction of a small handcrafted log cabin using Western Red Cedar or Douglas Fir.

Please see our current price guide for upcoming course dates and pricing.

## PLEASE NOTE

Log building is an inherently dangerous practice. All participants on the course are required to sign a waiver before being allowed to take part. A non-refundable deposit is required to confirm your place on a course. Due to high demand places will be reserved on a first come first serve basis. The courses take place at our yard in Forton, Shropshire.





# TIMBER PRODUCTS

Decking, fencing, furniture rounded timber and custom structural joinery - BLC is the one stop shop for all of your timberwork projects.

**ROUNDED TIMBER**

Using our log lathe we can turn uniform round timber from 150mm - 400mm in diameter and up to 9m in length. The finish of our rounded timber is very smooth and the diameter is accurate to within +/- 1mm.

Our uniform round poles are made to customer specified diameter and length and can be provided in any species, we currently carry Western Red Cedar and Douglas Fir in stock. We have turned round poles for sculpture creation, bridge construction, retail signs, architectural features, high ropes courses and many more interesting projects. If you have a design in mind we can come up with the technical solution. We use AutoCad to present to you exactly what we will provide.

**OFF THE MILL**

We take custom orders on milled timber from waney edge cladding and oversized fence posts to planed v-groove cladding and bespoke profiled boards.

**JOINERY**

We can cut, shape and join timber to any design. We can produce tapered poles, cut flat sides, mortice and tenon and produce many technical timber joints. Delivery is available nationwide.

**LOG BENCH**

The talking point at any barbecue or gathering, our handcrafted picnic tables are always a hit. Constructed from chunky Western Red Cedar logs, they are a long lasting, solid and beautiful addition to any garden. Our chunky picnic bench will last a lifetime and can be custom made to any length.

**BEDS, TABLES AND MORE**

Our catalogue of furniture is growing rapidly, check our website for the latest creations. Each custom made, unique piece is filled with character... it's touches like this that make a log house a log home.

**See our price guide for more details...**





**HANDCRAFTED MARQUEES**  
Something different.  
A wedding reception in  
Worcestershire.



**LEFT**  
Perfect for  
special events.

**BELOW**  
Festoon lights  
create a magical  
atmosphere.



# HANDCRAFTED LOG MARQUEE

**Handcrafted using Western Red Cedar logs  
by our own professional log builders.**

This distinctly unique marquee will make your event stand out with a quality, permanence and level of finish that a standard marquee cannot come close to. A beautiful temporary building to suit any special event.

## THE LOG MARQUEE FEATURES:

- Handcrafted Western Red Cedar posts
- Seamlessly joined Western Red Cedar log rafters offering a unique visual effect in the ceiling of the marquee
- Cedar cladded eaves wall to add a permanent feel
- Custom PVC covers, zipped to create openings wherever required
- Log bar with waney edge Cedar cladding

The marquee pictured is 9m wide and 15m long, this size marquee will seat 100 people for dinner or take **190 standing guests.**

Larger and smaller sizes are available on request. We like to offer a custom service where possible so please let us know your ideas.



**LEFT**  
Substantial log  
rafters create a  
dramatic feature.

## OPTIONS AND EXTRAS FOR HIRE INCLUDE:

- Hard or soft flooring
- Solid patio door entrance
- Decorative and starlight linings
- Handcrafted log benches up to 6m in length
- Log banquet table
- Festoon lighting
- Generator hire and electrical setup
- Log stage platform



# LUXURY SHEPHERD HUTS

We also offer a portable garden or outdoor room to fulfill your need for extra space for home or business. We are inspired by the portable shepherd's hut heritage and traditional form.

The Victorian proportions of our shepherd's huts can prove to be perfect as an extra room, artist's studio, bedroom, glamping venue or simply a whimsical retreat.

It is striking how well our huts sit in any situation. People often comment how the hut 'looks as if it has always been there.' We like that.

We have built shepherds huts for customers across the UK and Europe.

Simple buildings:  
no planning,  
no mess.  
Functional and  
beautiful.



## CEDAR WOOD HOT TUBS & SAUNAS

Transform your garden. Our fantastic hot tubs and saunas are the ultimate outdoor luxury. Perfect for relaxing alone or with friends and family...

**Our hot tubs create a natural and relaxing experience, are great value to buy and cheap to run. In true Canadian style they are also designed to be used all year round - the colder it is outside the better!**

Unlike some cheaper and lower quality suppliers, we specialise in long lasting, efficient and high quality products. This starts with using only the best materials such as Canadian red cedar and marine aluminium. All our products are guaranteed for 12 months (subject to terms and conditions).

**Please contact us for further details...**





# CONTACT US NOW

**[WWW.BRITISHLOGCABINS.COM](http://WWW.BRITISHLOGCABINS.COM)**

## CONTACT US



[www.facebook.com/britishlogcabins](http://www.facebook.com/britishlogcabins)  
[www.plus.google.com/+Britishlogcabins](http://www.plus.google.com/+Britishlogcabins)  
[www.twitter.com/logbuildinguk](http://www.twitter.com/logbuildinguk)  
<https://www.pinterest.com/logbuildinguk/>  
Skype name - britishlogcabins

tel: 0121 2882840

email: [info@britishlogcabins.com](mailto:info@britishlogcabins.com)

