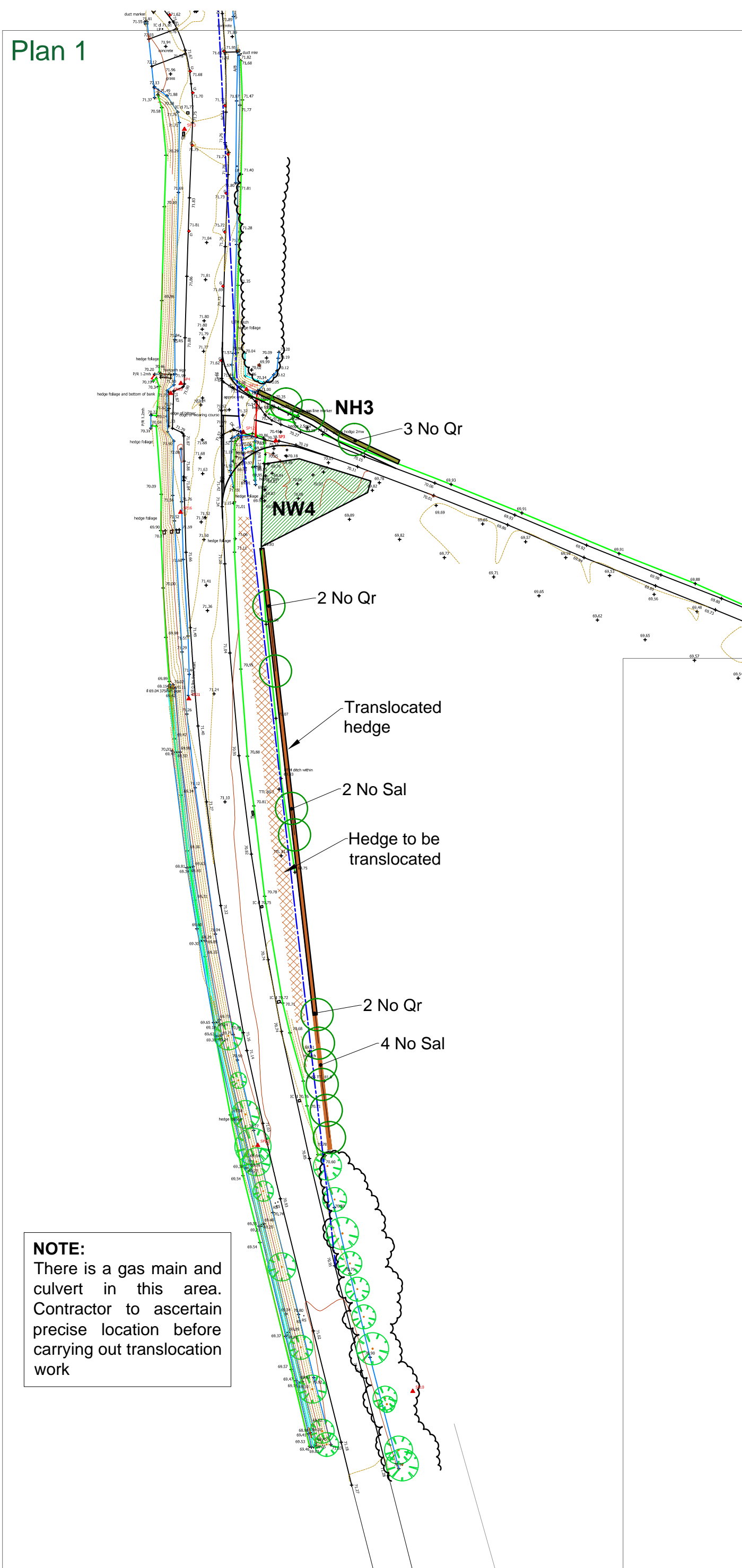


Plan 1



TRANSLOCATION OF HEDGEROW SPECIFICATION

Hedgerow trees - these works to be supervised by a suitably qualified Landscape Professional

Prepare the recipient site by excavating to 750mm deep and cultivating the base of the excavation to a depth of 150mm. Place a layer of friable, free-draining, uncompacted subsoil 150mm deep sourced from the area of the site immediately adjacent to the Hedgerow (and from the equivalent depth) in the base and sides of the excavation.

The trees that are to be transplanted should be cut down to 300mm above ground level. Using an excavator bucket, excavate around the stems to create a rootball that is an appropriate size to move with the excavator and of equivalent depth to the prepared recipient site.

Using suitable machinery so that as much soil as possible is kept with the rootballs, move these trees to the recipient area, arranging them so that they are evenly spaced across the area identified.

Adjust the shape of the recipient excavations to suit the size and shape of each rootball as it is moved so that a close fit is achieved all around the rootball. Backfill the excavation to within 200mm of the surface using loose free-draining, uncompacted subsoil sourced from the equivalent depth around the original site of the Hedgerow, compact lightly by hand. Backfill the excavation to surface level using free-draining, uncompacted topsoil sourced from the original site of the Hedgerow and water in well, adding more backfill soil as required.

Plan 2



Plant Schedules

SPECIES Mixed Native Woodland Planting Schedule

Area of bed lin m	551	355	698	346	
Number of plants per m2	0.44	0.44	0.44	0.44	
Number of plants per area	242	156	307	152	
Planting area	NW1	NW2	NW3	NW4	
TYPE	SIZE(min.)	%	NO. OF PLANTS		TOTAL
Alnus glutinosa	1+1 bare root	600mm	15	36	23
Alnus glutinosa	1+1 bare root	600mm	5	12	8
Betula pubescens	1+1 bare root	600mm	10	24	16
Corylus avellana	1+1 bare root	600mm	10	24	16
Crataegus monogyna	1+1 bare root	600mm	10	24	16
Euonymus europaeus	1+1 bare root	600mm	4	10	6
Ilex aquifolium	1+1 bare root	2L	5	12	8
Malus sylvestris	1+1 bare root	600mm	3	7	5
Quercus robur	1+2 bare root	600mm	15	36	23
Quercus robur	1+2 bare root	600mm	5	12	8
Salix caprea	1+1 bare root	600mm	5	12	8
Sorbus aucuparia	1+1 bare root	600mm	7	17	11
Sorbus aucuparia	1+1 bare root	600mm	2	5	3
Viburnum opulus	1+1 bare root	600mm	4	10	6
Totals			100	242	156

SPECIES Mixed Native Hedge Planting Schedule

Area of bed lin m				37	65	39	
Number of plants per lin m				5	5	5	
Number of plants per area				185	325	195	
Planting area				NH1	NH2	NH3	
	TYPE	SIZE(min.)	%	NO. OF PLANTS			TOTAL
Acer campestre	1+1 bare root	600mm	6	11	20	12	42
Corylus avellana	1+1 bare root	600mm	20	37	65	39	141
Crataegus monogyna	1+1 bare root	600mm	30	56	98	59	212
Ilex aquifolium	1+1 bare root	2L	4	7	13	8	28
Prunus spinosa	1+1 bare root	600mm	30	56	98	59	212
Quercus robur	1+2 bare root	600mm	6	11	20	12	42
Sorbus aucuparia	1+1 bare root	600mm	4	7	13	8	28
Totals			100	185	325	195	705

SPECIES Specimen Trees (distribution as drawing)

CODE	SPECIES	TYPE	SIZE(min.)	TOTAL
Ag	Alnus glutinosa	Standard	200-300cm	10
Bp	Betula pubescens	Standard	200-300cm	10
Qr	Quercus robur	Standard	200-300cm	24
Sa	Sorbus aucuparia	Standard	200-300cm	12
Sal	Salix alba	Standard	200-300cm	17
Sp	Salix pentandra	Standard	200-300cm	6
Totals				79

Planting Specification

PLANTING SPECIFICATION - All works carried out in accordance with BS4428:1989 Code of Practice for General Landscape Operations

Compost: Do not use peat or products containing peat. Compost to comprise well rotted friable organic matter arising from farm operations

Topsoil and Cultivation: Ensure there is 500mm depth of topsoil across planting areas. Cultivate native woodland planting (NW1, NW2, NW3 and NW4) and hedge planting areas (NH1, NH2 and NH3) to minimum 600mm depth to mix topsoil thoroughly with subsoil before pit planting as schedule. Hedge width min. 750mm

Plants: To BS 3936 Part 1:1992
All bare root stock to be planted between Nov and March. To be supplied in accordance with the plant schedules. Plant stock to be healthy, vigorous, free from pests and diseases and suitably hardened off. Stock shall be well formed, fibrous root stock system and be free from perennial weeds. Planting to Horticultural Trades Association 'Handling and establishing landscape plants'. Refer schedule for pit sizes and ameliorants
Native woodland species to be planted in groups of 3, 5 and 7 nr.

Planting instructions:
Native woodland: Plant Oak and Alder in distinct groups to form the core of the planting bed with the remaining species to be planted in random groups around the core.

Native woodland and native hedge species to be planted in groups of 3, 5 and 7 nr.

Watering: To field capacity on completion

Tree pits: Excavate pits to sizes indicated in schedule and break up bottoms of pits to a depth of 150mm, scarify sides. Excavated material to be mixed with compost, polymer and fertiliser as stated in schedule.

Tree stakes: Single or double stake length as table. Position stakes on windward side with galvanised nails as close as possible to stem and drive vertically at least 300mm into bottom of pit before planting. Consolidate material around stakes and cut to approx. 600mm above ground. Secure tree to stake or cross bar firmly but not to rigidly with approved rubber and spacer tie.

Mulch: Medium bark mulch, 75mm deep, free from pests, disease, fungus and weeds, complete mulch cover in woodland planting areas, 1.25m dia circles around specimen trees and 1m wide strip beneath hedges.

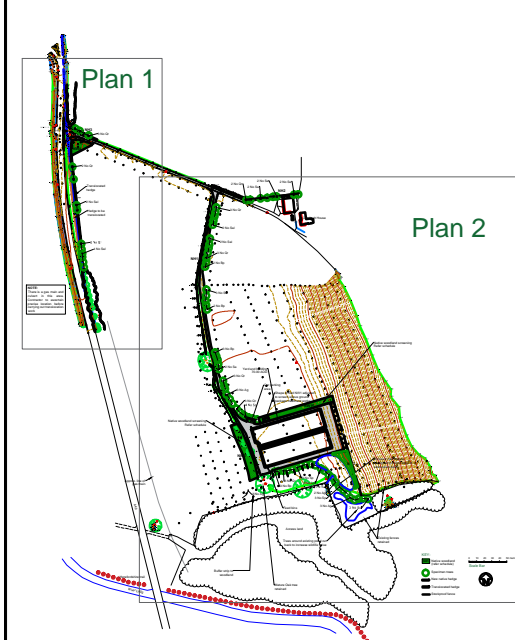
Rabbit Guards: Fit spiral rabbit guards to all whips and transplants

Plant	Tree pit size	Backfilling material mixed with:		Stakes	
To BS 3936 Part 1:1992		Compost	Slow release fertiliser	Overall length of stake	Diameter
Shrub or transplant up to 90cm high	300mm x 300mm x 300mm	5 litres	50g		
Festooned tree	600mm x 600mm x 600mm	16 litres	100g	1.5m	75mm
Standard tree	900mm x 900mm x 600mm or larger	100 litres	300g	1.5m (x2)	75mm (with cross bar 50mm)

KEY:

- Native woodland (refer schedule)
- Specimen trees
- New native hedge
- Translocated hedge
- Stockproof fence

0 10 20 30 40 50 metres
Scale Bar



Key Plan

B 17.05.17 Native woodland areas, specimen trees, schedules and attenuation feature revised
A 16.11.16 Modifications following comment from HCC and Highways works

HAIRE LANDSCAPE CONSULTANTS
UPPER BRECHFA LLANDEFALLE
BRECON POWYS LD3 0NG
Tel: 01874 754066
Email: mikel@hairelandscapeconsultants.co.uk
Website: hairelandscapeconsultants.co.uk

Client: Corbett Farms Ltd
Project name: Eaton Hill Poultry Development, Leominster
Drawing title: Landscape Mitigation
Scale: 1:1000@A1 Date: June '16 Drawn by: KH Checked by: -
Figure 2
Drawing to: B