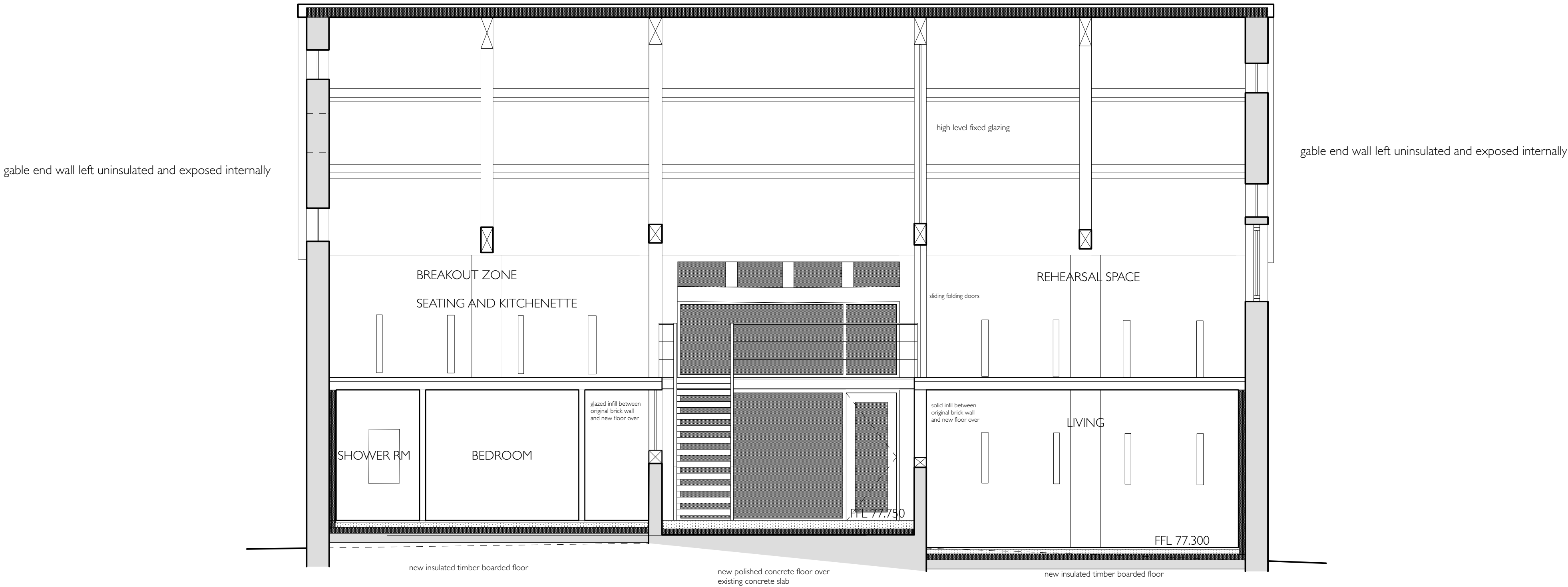


- Key to Materials
- 1 plain clay tiled roof (insulated)
 - 2 red brick walling
 - 3 stone walling
 - 4 existing opening with glazed infill
 - 5 new metal framed screen and doorway
 - 6 timber louvres
 - 7 galvanised metal rainwater goods
 - 8 timber weatherboarding (insulated)
 - 8a timber weatherboarding (uninsulated)
 - 9 profiled metal sheeting (insulated)
 - 10 profiled metal sheeting (uninsulated)
 - 11 bat entry point through ridge
 - 12 bat entry point thorough eaves/soffit
 - 13 bat entry point in gable end
 - 14 bat loft
 - 15 stonework
 - 16 conservation roof glazing
 - 17 corten steel sliding door incorporating ventilation slots and pass door
 - 18 modified opening in existing wall
 - 19 metal bi-fold doors in existing opening
 - 20 timber ledge and braced shutters with window behind
 - 21 timber ledge and braced shutter with door behind
 - 22 metal flue to woodburner. Colour to match roofing sheet
 - 23 missing raking strut reinstated
 - 24 missing oak post reinstated
 - 25 PV panels



Proposed Conversion
Eyton Court Barns
Section as proposed
Drawing no. **99808.P18**
Scale 1:100 at A3 1:50 at A1
August 2024



warren benbow architects

1 Towns End Kingston
Herefordshire
HR5 3AL

01544 239 136

www.warrenbenbow.com
mail@warrenbenbow.co.uk