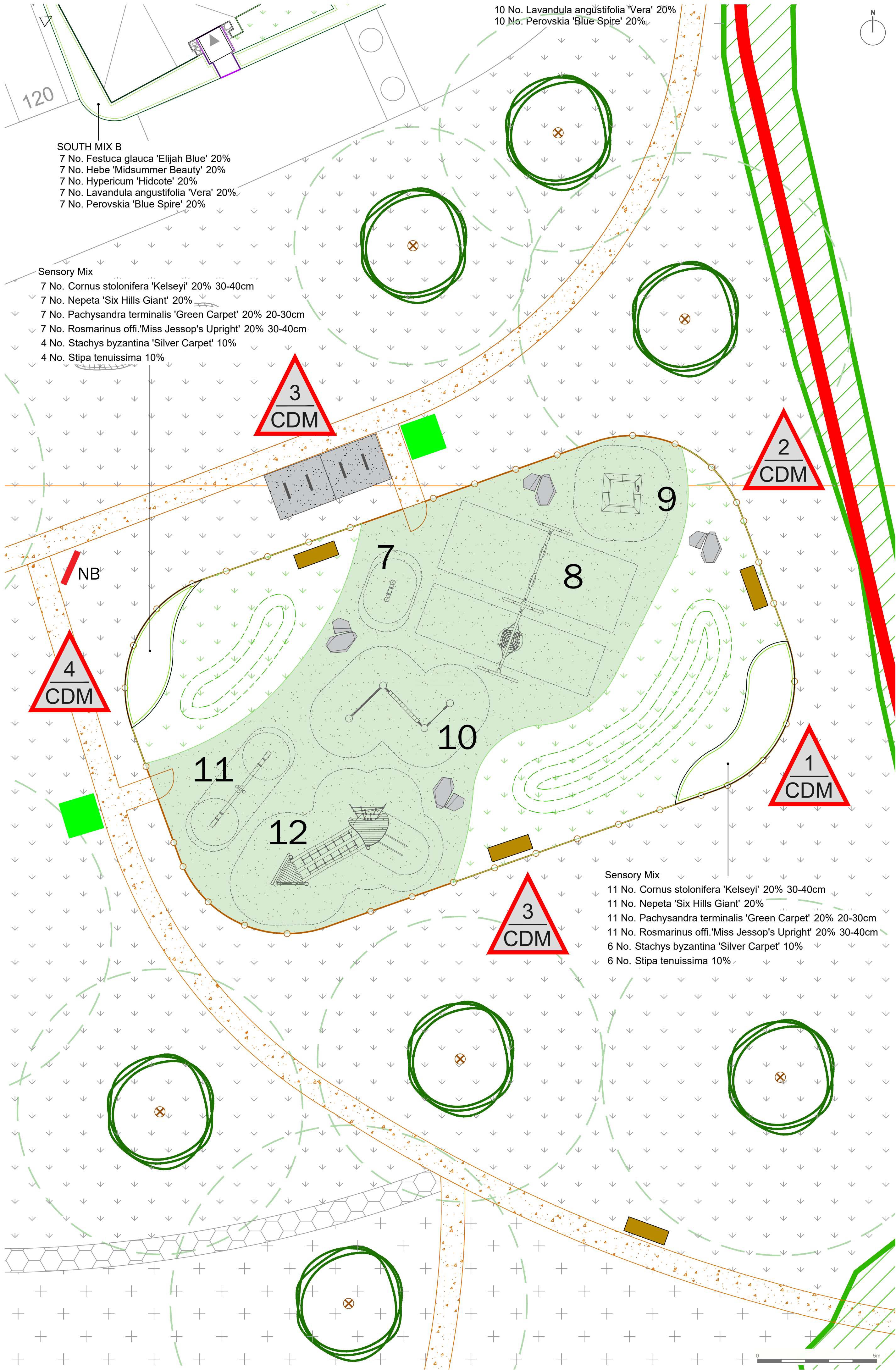


Registered office: 01285 740427 - [www.edp-uk.co.uk](http://www.edp-uk.co.uk) - [info@edp-uk.co.uk](mailto:info@edp-uk.co.uk)





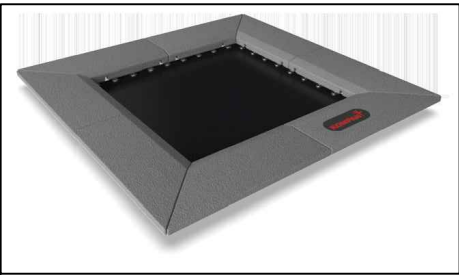
Play Area Equipment



7. Double springer  
Supplier: Kompan  
Product Reference:NR0103  
Age Range: 3-8 + suitable for inclusive play



8. Steel swing and rope seat  
Supplier: Kompan  
Product Reference: KSW92011  
Age Range: 4-10, suitable for inclusive play



9. Jumper  
Supplier: Kompan  
Product Reference: JUM101  
Age Range: 4-15



10. Balance Rope  
Supplier: Kompan  
Product Reference: KPL804  
Age: 3-15



11. Entry seesaw 4 person  
Supplier: Kompan  
Product Reference: NR0106  
Age Range: 4-12



12. Two Towers with bridge  
Supplier: Kompan  
Product Reference: NR02002  
Age Range: 6-12

- Proposed Tree  
Mature Canopy Illustrated
- Proposed Amenity Grass
- Proposed Grass Mounds
- Proposed Sensory Planting
- Proposed Hoggin Path
- Timber Picket Fencing around Play Area  
Height: 1.2m in accordance with LPA requirements
- Timber Pedestrian Gate  
To match fence
- Proposed play safety surfacing  
Bonded rubber mulch safety surfacing. Extent of safety zone for play equipment to be compliant with BS EN 1177 meeting impact absorption requirements for all play specified equipment. Colour: Green
- NB  
Play space information board  
Board is to be located at entrances as shown. Sign to include operational information (rules of the space, incl. no dogs), contact details for reporting issues
- Cycle stands  
Product: Sheffield cycle stands, galvanised steel, root fixed
- Proposed Seats  
Solid timber style with a backrest, to be root fixed.  
Product: Cheshunt Seat for 3 people CHS6
- Proposed Litter Bin  
Product: Hardwood square bin with lockable side  
Supplier: Woodscape
- Feature Boulders  
Stone boulders of varying heights with rounded edges.  
Maximum height of each boulder above ground shall not exceed 600mm.

Notes:  
All equipment within play areas to meet BS EN 1176  
ROSPA Safety Audit to be carried out before Play Area is opened to the public.

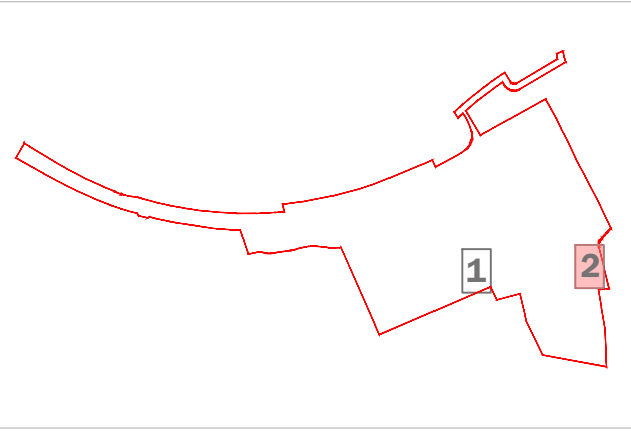
For detail of surrounding Public Open Space and On-Plot planting, see Drawings edp2828\_d072 and edp2828\_d073

A risk assessment has been carried out on this design. Residual risks following this process are listed below. A copy of the full Design Risk Register is also available on request from EDP.

1. Installation and maintenance of play equipment and fencing/gates;
2. Installation and maintenance of safety surfacing;
3. Installation and maintenance of cycle stands, benches and bins;
4. Construction and maintenance of hoggin paths;
5. Working within close proximity of underground services (across the site);
6. Works adjacent to existing or proposed highways (across the site).

For further guidance, refer to HSE Construction (Design and Management) Regulations 2015.

overview



This drawing is to be read in conjunction with all other drawings and specifications within the package. These drawings have been prepared for design development and costing purposes only. All dimensions in millimetres unless otherwise specified. Do not scale off this drawing, written dimensions to be taken only. All base plans used are provided by the client and architect, except where otherwise expressly agreed in writing. EDP shall have no responsibility or liability for any loss direct or consequential. This drawing must not be copied in whole or part without prior written consent from EDP.

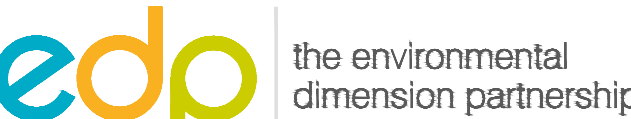
purpose of issue **PLANNING**

a	Various revisions following client review	25.02.2022	RP
-	Original	23.02.2022	RP
rev	description	date	by

client  
**Vistry Homes Limited**

project title  
**Land at Leaddon Way, Ledbury**

drawing title <b>Landscape Detailed Design - Play Areas</b>	<b>Sheet 2 of 2</b>
date 23 FEBRUARY 2022	drawn by RP
drawing number edp2828_d074a	checked LH
scale 1:100 @ A1	QA GY



Registered office: 01285 740427 - www.edp-uk.co.uk - info@edp-uk.co.uk