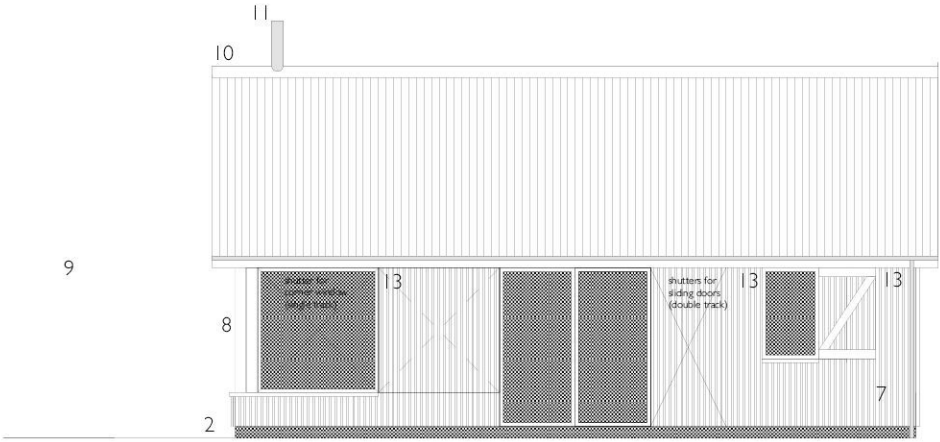
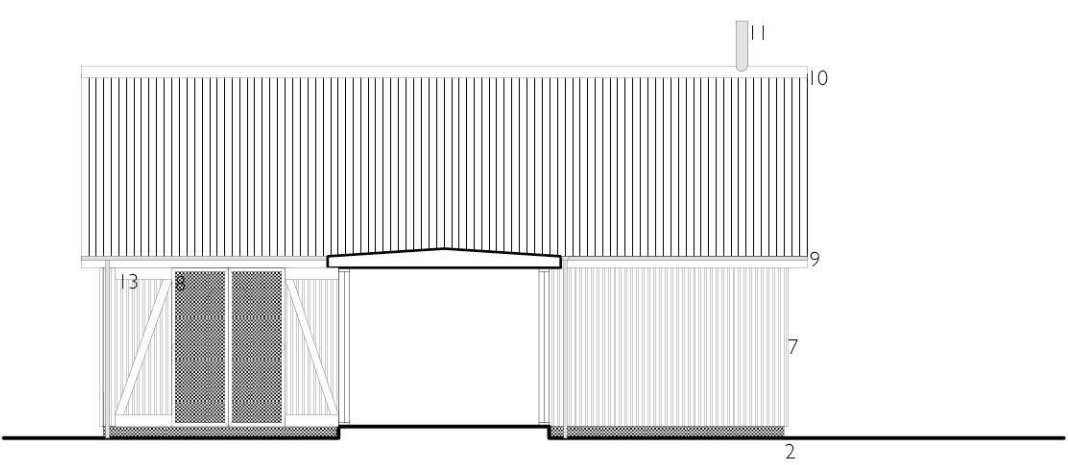


DAY TIME SHUTTERS OPEN



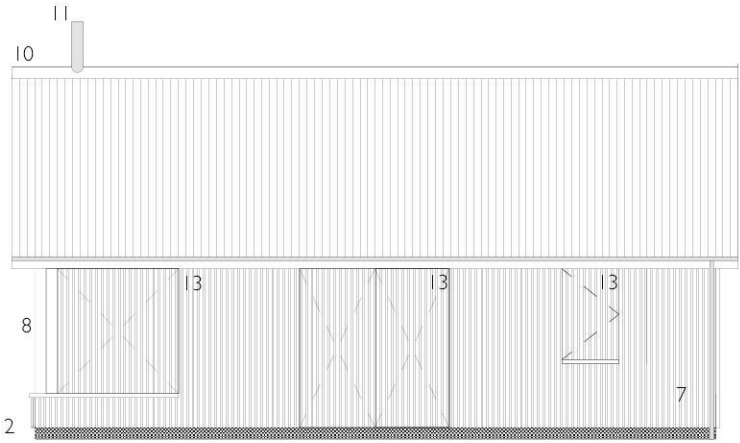
WEST ELEVATION



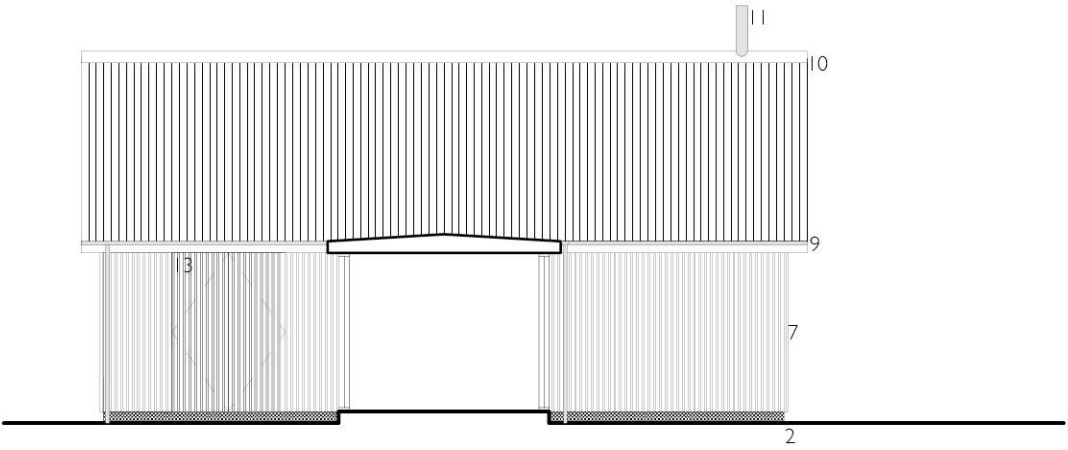
EAST ELEVATION

- Key to Materials
- 1 Exposed black painted structural timber framing
 - 2 Brick
 - 3 Natural stone
 - 4 Render
 - 5 Slate roof
 - 6 Painted timber windows and doors
 - 7 Black stained vertical timber cladding
 - 8 Aluminium/timber hybrid windows
 - 9 Galvanised steel rainwater goods
 - 10 Steel profiled sheet roofing (Corten)
 - 11 Woodburner flue
 - 12 Single ply roofing or lead?
 - 13 Black stained timber shutters

- Revisions
- A 26.10.20
 - Revised in light of Comments from Planning & Conservation



WEST ELEVATION



EAST ELEVATION

NIGHT TIME SHUTTERS CLOSED



Option 2 26.10.20

Proposed Extension
2 Sheepwash Cottages Knill
Elevations as proposed
Drawing no. **99720.P18A**
Scale 1:100 at A3
October 2020



warren benbow architects
21-22 Mill Street Kington
Herefordshire HR5 3AL
01544 239 136
www.warrenbenbow.com
mail@warrenbenbow.co.uk