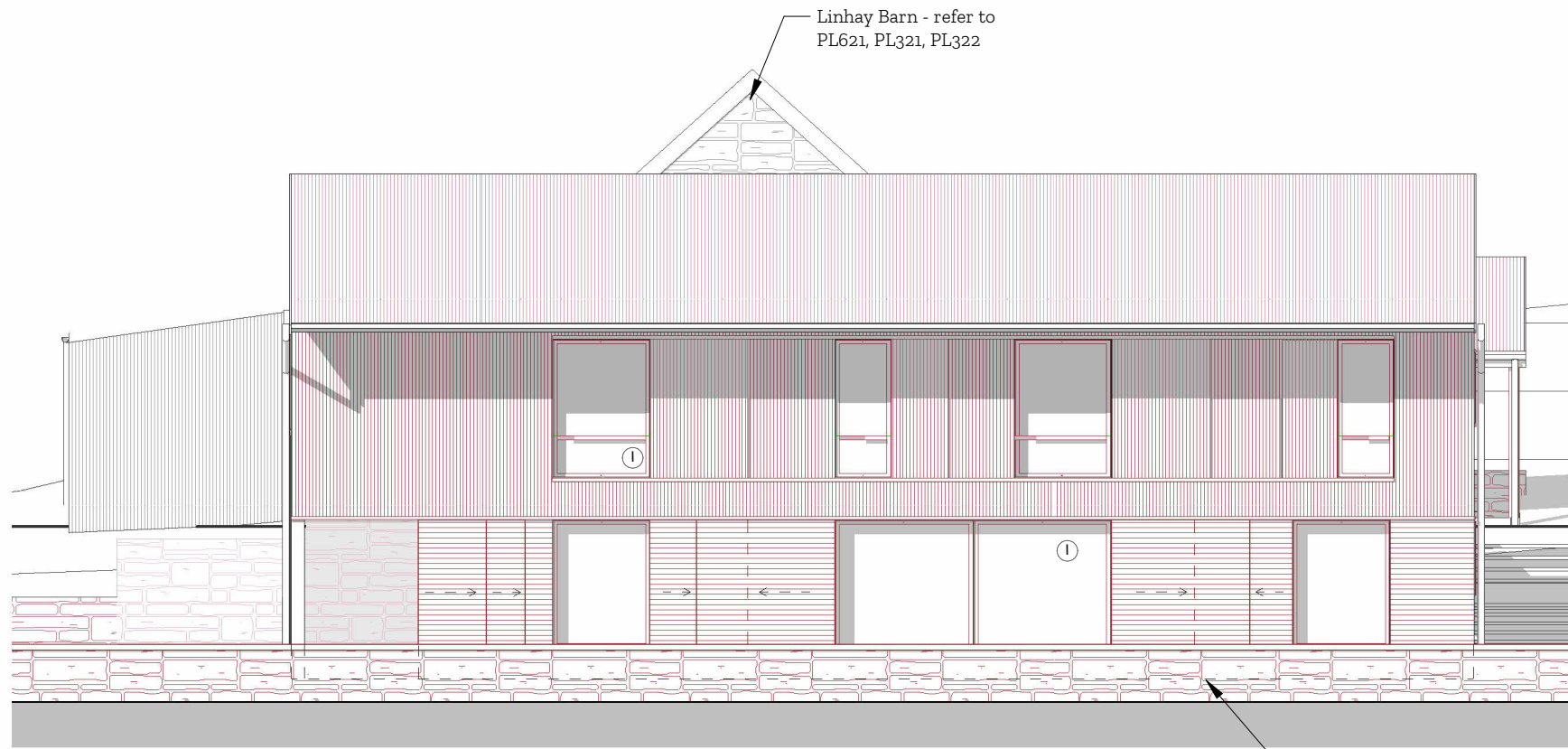


① South Elevation - West Barns (Shutters in closed position)  
1:100



② South Elevation - West Barns (Shutters in open position)  
1:100



#### South West Barns Key:

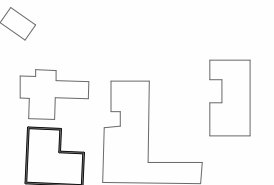
- A - All stonework new & repaired using lime mortar to match existing.
- B - New stonework to match existing.
- C - New timber frame window with powder coated finish in existing opening.
- D - Conservation, flush fitting aluminium conservation rooflights.
- E - Windows and doors to be timber cladding stained grey.
- F - Corrugated metal cladding, colour TBC
- G - Conservation, flush fitting aluminium conservation rooflights.
- H - Corrugated metal roofing to match existing.
- I - Windows and doors to be timber frame with powder coated finish.
- J - All rainwater goods in aluminium PPC, colour TBC
- K - ASHP
- L - Timber structural column.
- M - Corrugated metal sliding shutter.
- N - Horizontal timber cladding
- O - EPDM hidden valley roof
- P - Timber Column
- Q - SVP with Cowl PPC to match roof

ARBOR  
architects

Notes

DESIGNERS HAZARD IDENTIFICATION:

Site Key:



A	16/Oct/24	Planning Clarifications	MG	MH
Rev	Date	Description	DRW	CHK

Project  
Penymoore Farm

Project No. 1037

Date 18/Mar/24	Status PLANNING		
Scale 1:100 at A3	Drawn MG	Checked MH	

Drawing  
Proposed South Elevation - South West Barns

Drawing No. PL632 Rev. A