





MATERIALS KEY

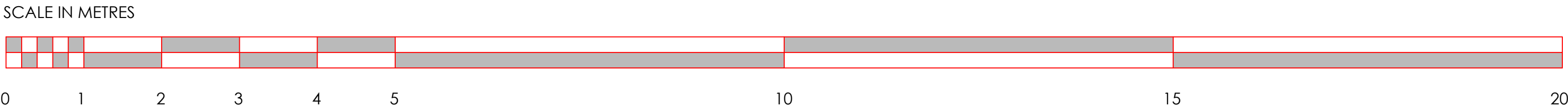
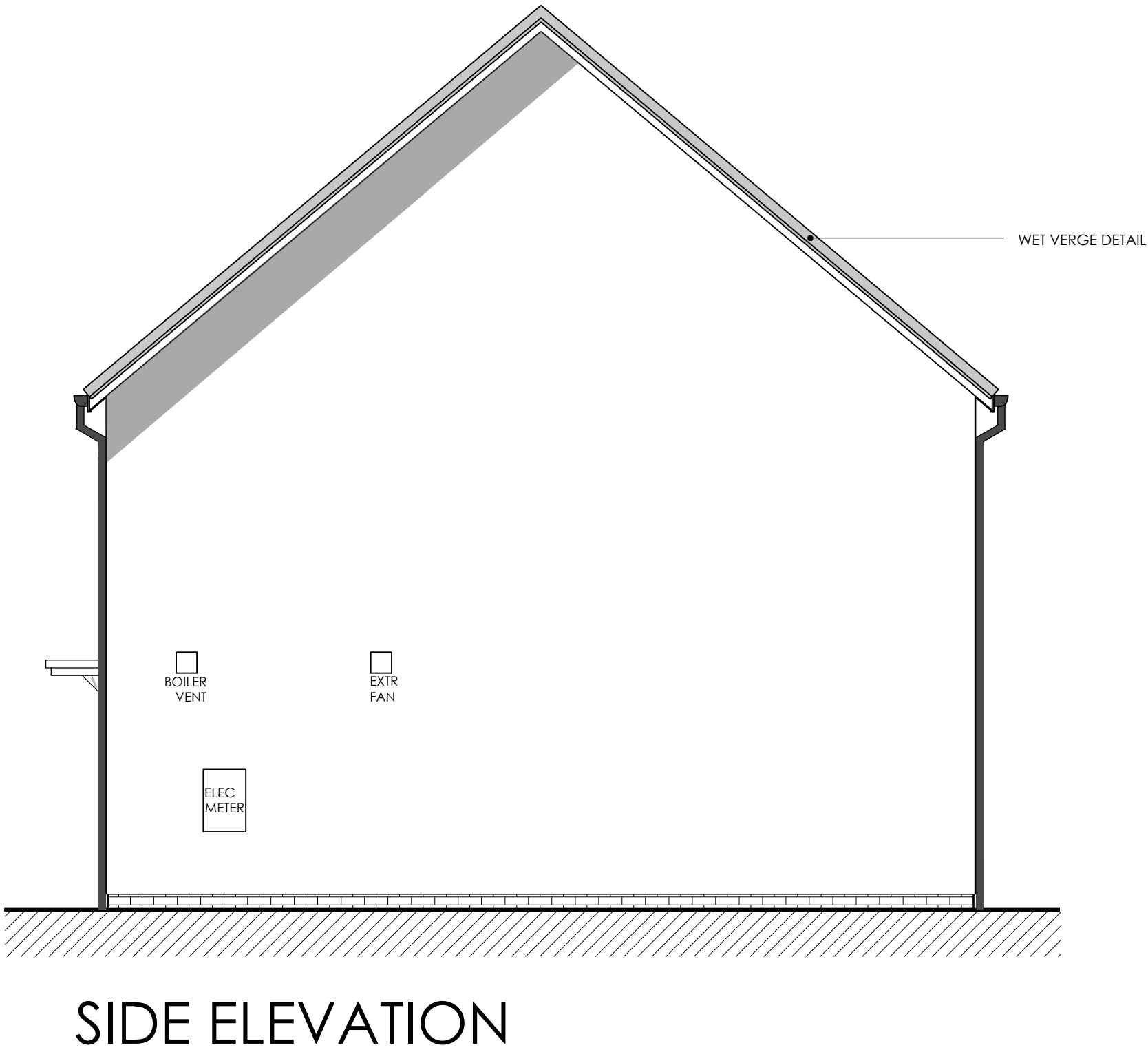
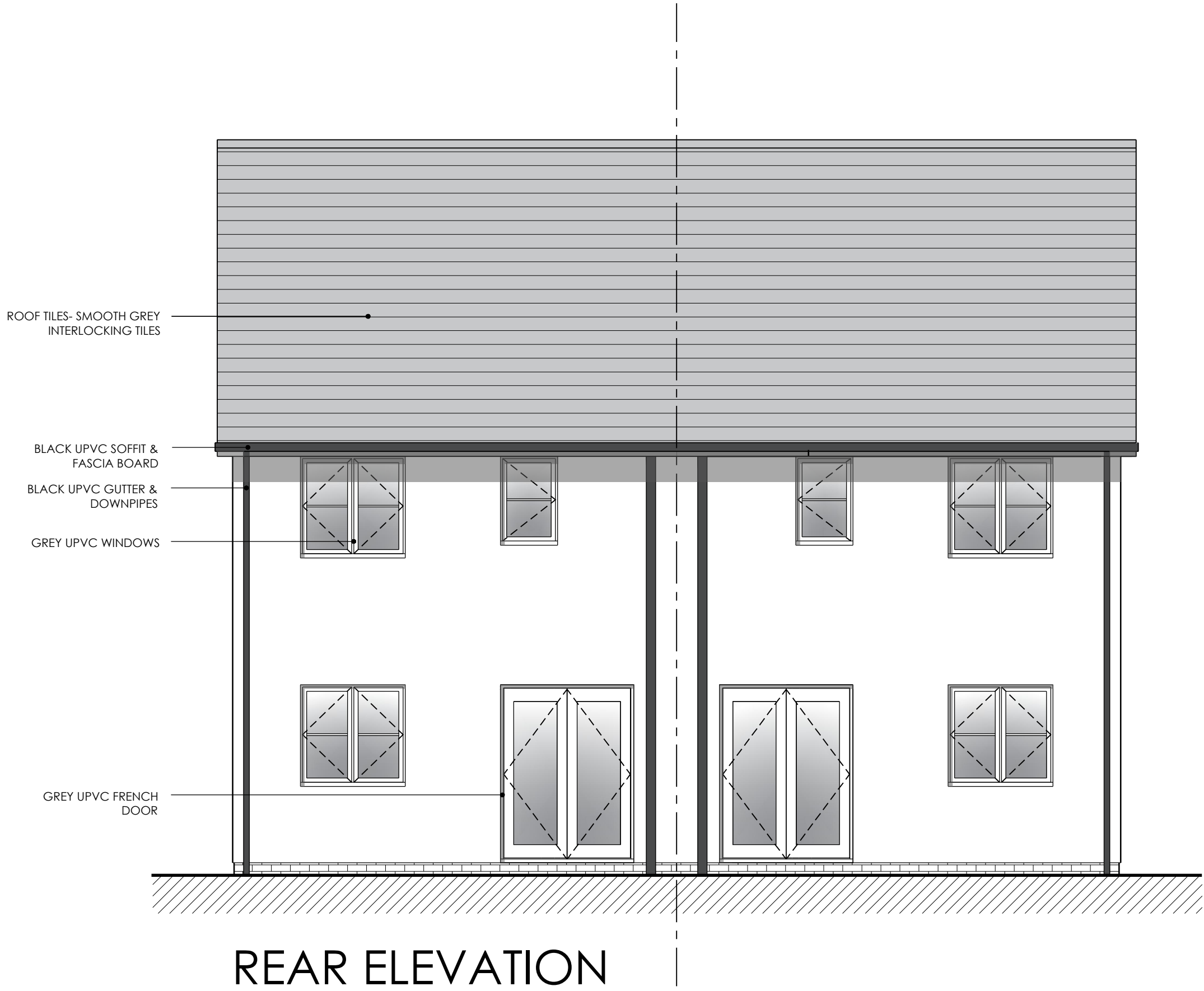
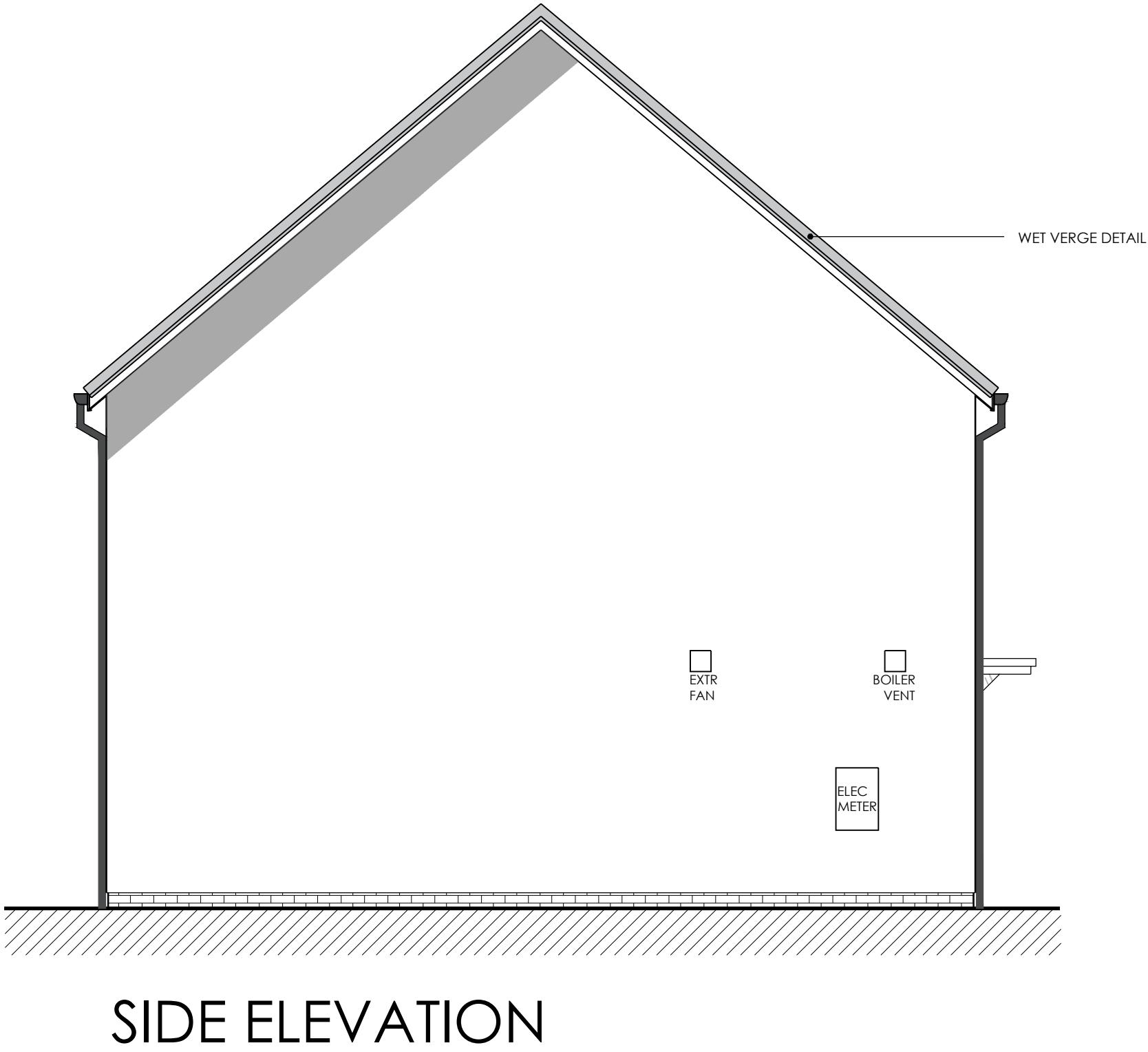
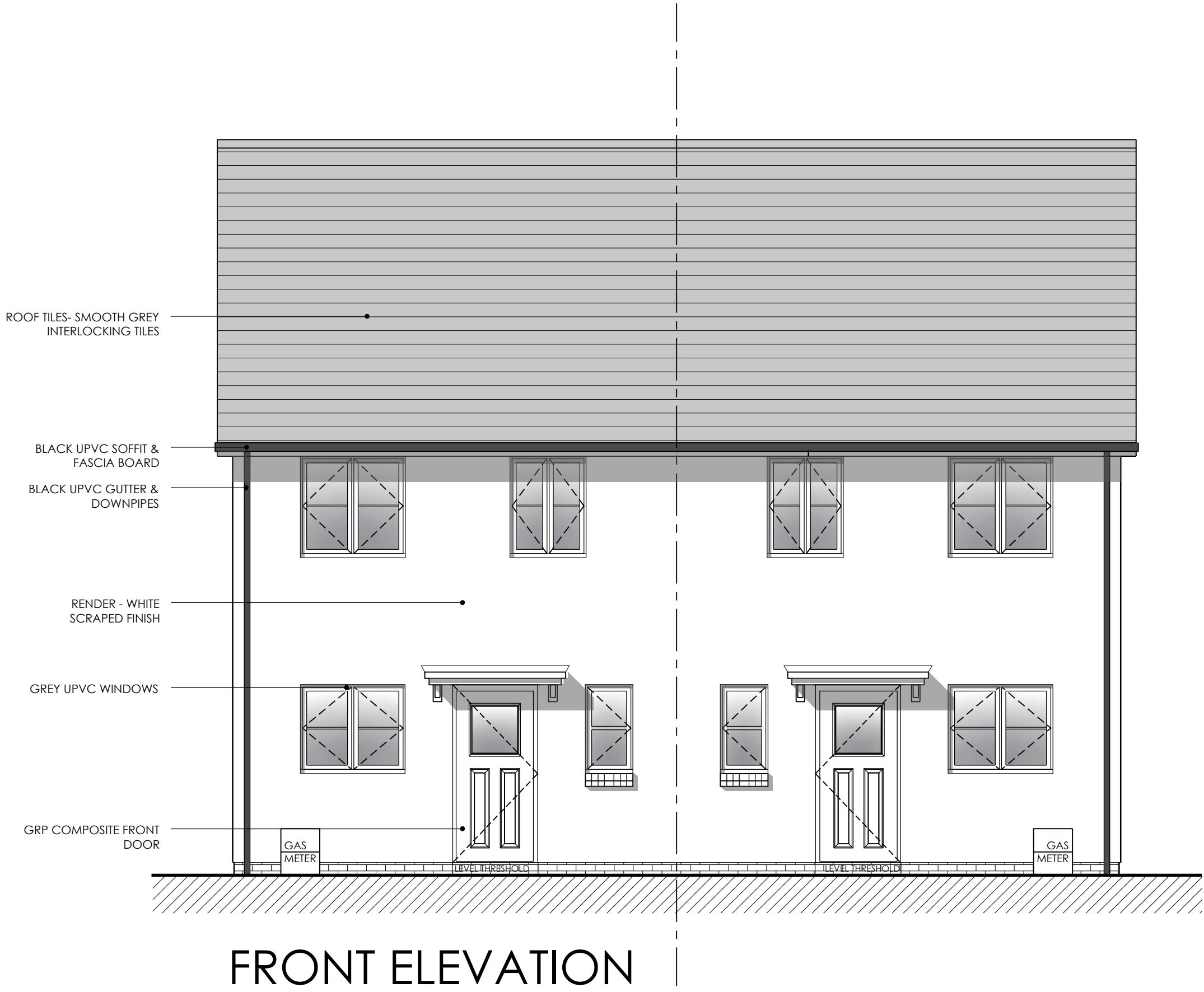
- 

**ROOF TILE**  
FORTICRETE GEMINI -  
SLATE GREY
- 

**RENDER**  
WHITE RENDER -  
SCRAPED FINISH
- 

**WINDOW**  
GREY UPVC WINDOWS
- 

**FRONT DOOR**  
IRISH OAK COLOUR GRP  
COMPOSITE FRONT DOOR



REV	DATE	DESCRIPTION	BY

DRAWING STATUS - INDICATED WITH ✓			
FEASIBILITY	PLANNING	✓	
FOR APPROVAL	BUILDING REGS		
INFORMATION	CONSTRUCTION		



LOWFIELD > MARION > WELHPPOOL > POWYS > SY21 8JX  
TEL > 01453 891858  
E-MAIL > enquiries@sjroberts.com  
WEBSITE > www.sjroberts.com

CLIENT		
T.B.C.		
PROJECT		
Proposed Residential Development Brimfield By-pass, Brimfield Herefordshire		
SCALE		DATE
1:50 @ A1		DECEMBER 2020
1:100 @ A3		DRAWN BY
		SC
DRAWING TITLE		
2 BED - YELLOW ELEVATIONS		
PROJECT NO.	DRAWING NO.	REVISION
FEAS	201	-

NOTES:  
ALL DIMENSIONS TO BE CHECKED AND CONFIRMED ON SITE PRIOR TO ANY WORKS OR FABRICATION.  
DO NOT SCALE OFF THIS DRAWING.  
ANY ERRORS, OMISSIONS OR DISCREPANCIES ARE TO BE BROUGHT TO THE ATTENTION OF SJ ROBERTS IMMEDIATELY.

© THE CONTENTS OF THIS DRAWING ARE THE COPYRIGHT OF SJ ROBERTS GROUP. IT MUST NOT BE REPRODUCED NOR AMENDED BY A THIRD PARTY WITHOUT OUR WRITTEN PERMISSION.

SJ ROBERTS CONSTRUCTION LTD:  
Registered in England & Wales  
Registration No: 3153914  
Vat No. 870 1768 14

