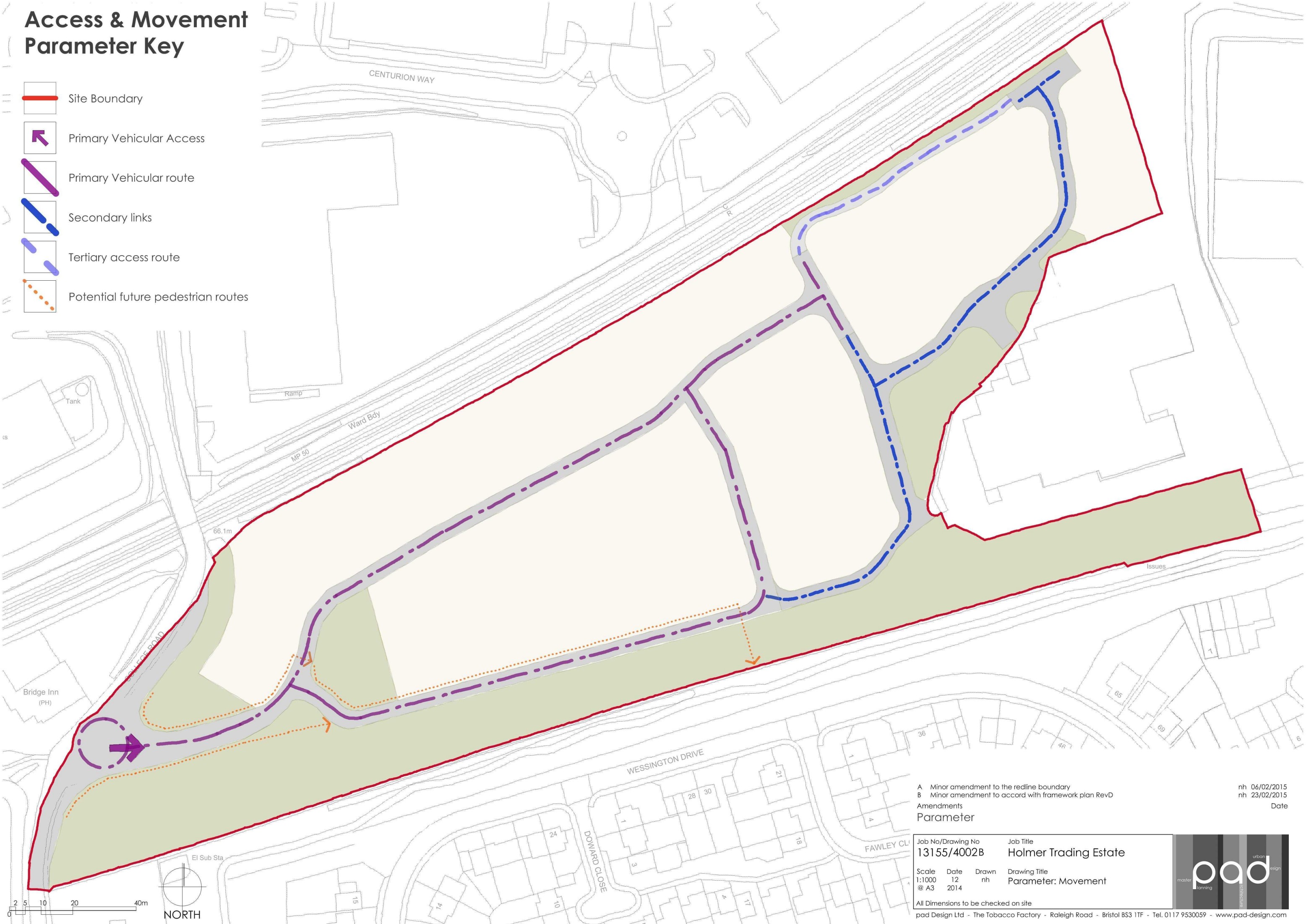


# Access & Movement Parameter Key

- Site Boundary
- Primary Vehicular Access
- Primary Vehicular route
- Secondary links
- Tertiary access route
- Potential future pedestrian routes



A Minor amendment to the redline boundary  
B Minor amendment to accord with framework plan RevD  
Amendments  
Parameter

Job No/Drawing No  
13155/4002B  
Job Title  
Holmer Trading Estate  
Scale  
1:1000  
Date  
12  
Drawn  
nh  
Drawing Title  
Parameter: Movement

nh 06/02/2015  
nh 23/02/2015  
Date

