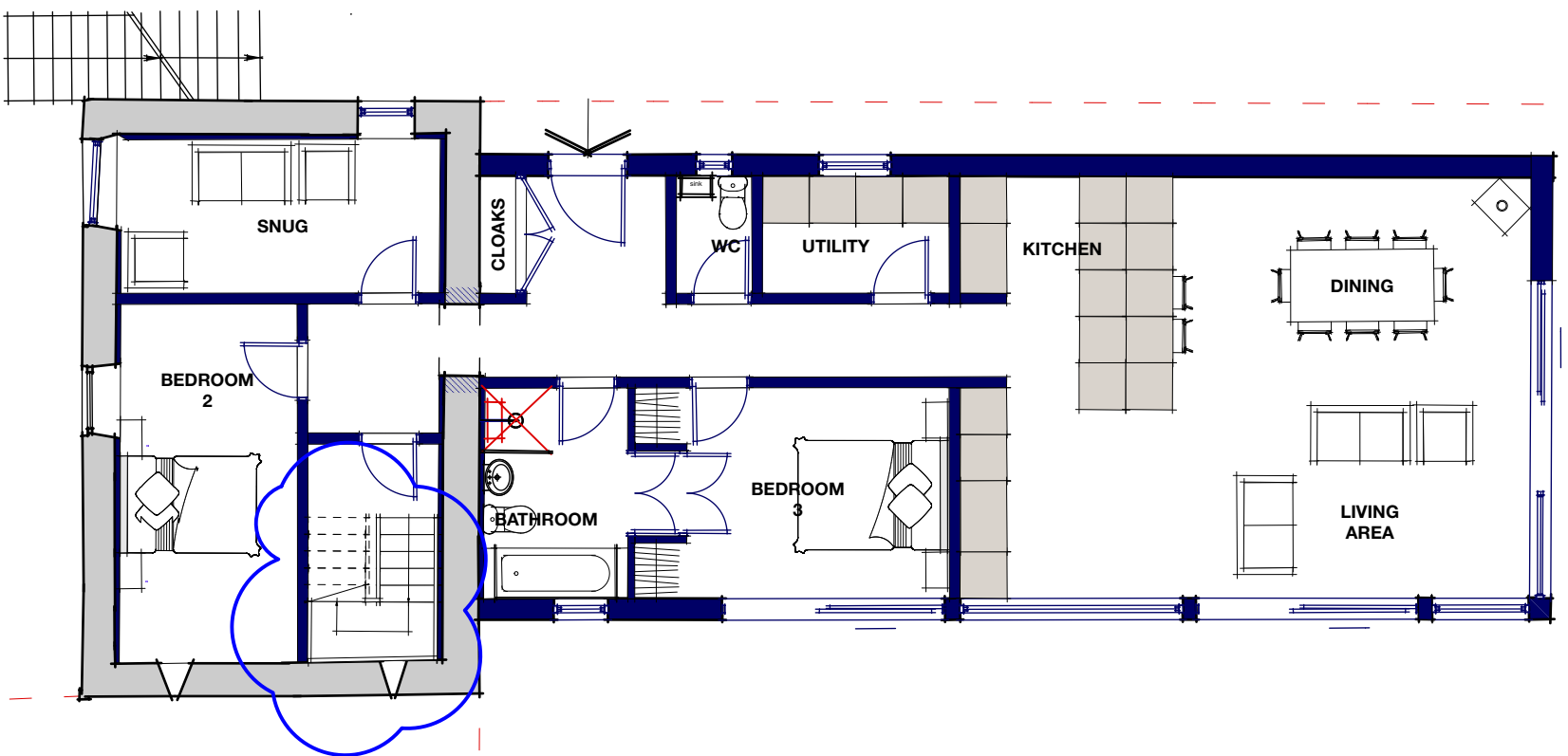
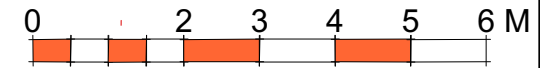
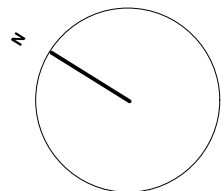


1 First Floor Plan  
1:100@A3



3 Ground Floor Plan  
1:100@A3



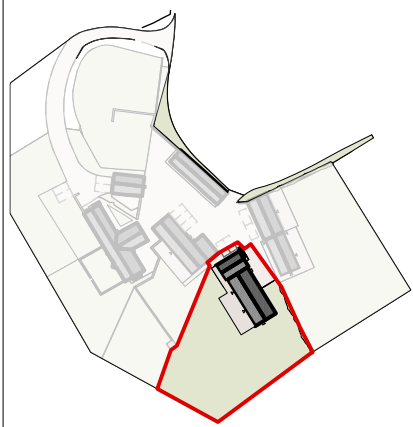
# BARN 2

- 1 Do not scale off this drawing.
- 2 Any discrepancies to be referred to the Architect.
- 3 This drawing is to be read in conjunction with all relevant specifications and other drawings issued by the Architect, and other specialists.
- 4 This drawing is copyright and is not to be reproduced without RRA permission.
- 5 IF IN DOUBT, ASK.

## Area Schedule

### Barn 2

Plot (3 Bed): 1490m<sup>2</sup>  
- Gross Internal Floor Area: 153m<sup>2</sup>



## Barn Location

Revisions following conservation officer comment	20230609-	J
Revisions following meeting with conservation officer	20220912-	I
Revision Description	Date	Check Rev



RRA Architects Ltd  
WorkHere: 4 - 5 High Town  
Hereford  
HR1 2AA  
T 01432 278 707  
E info@rraarchitects.com  
[www.rraarchitects.com](http://www.rraarchitects.com)  
London T 0203 130 0398 Hereford T 01432 278 707  
Ludlow T 01584 519 747 Gloucestershire T 01242 269374

Client :  
Balfour  
Project :  
Tremahaid Farm, Welsh Newton, Monmouth,  
NP25 5RY  
Drawing Title :  
Proposed Barn 2 Floor Plans  
Status: PLANNING Date: July '19 Drawn By: AAJ  
Drawing No: 3003 P(0) 200 J Revision: Scale: As Shown