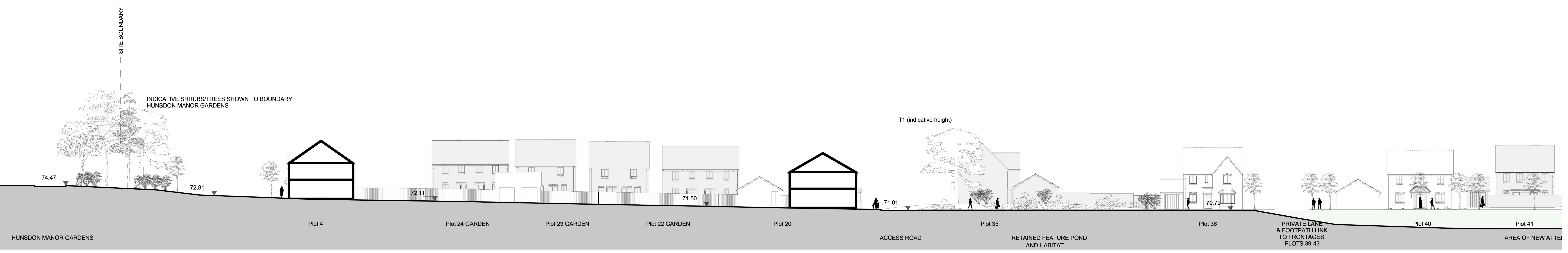


All Intellectual Property Rights (including copyright) in or relating to the drawings, designs, plans, specifications, reports, and other documents prepared by Armstrong Burton Architects Ltd for Armstrong Burton Group, for Armstrong Burton Group, for Armstrong Burton Architects Ltd are reserved by Armstrong Burton Group. No part of this document may be reproduced, stored in a retrieval system, or transmitted in any form or by any means, electronic, mechanical, photocopying, recording, or by any information storage and retrieval system, without the prior written permission of Armstrong Burton Group. Armstrong Burton Group is a limited liability company registered in England and Wales, company number 10000005. Registered office: 10000005, Promont, Licence number: 10000005. E-mail: info@armstrongburton.com. Website: www.armstrongburton.com.

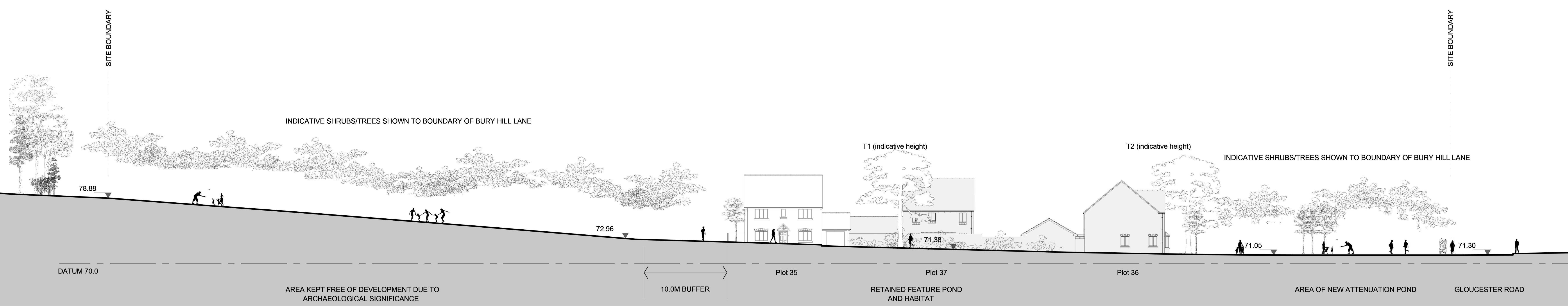


DATUM 60.0

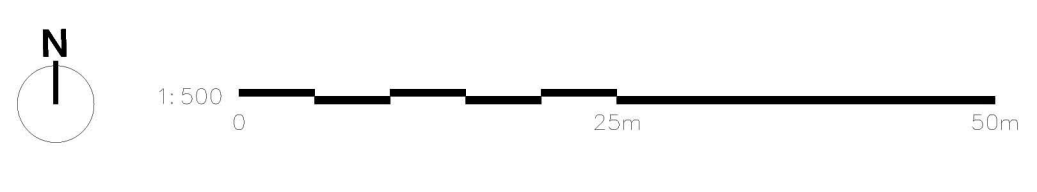
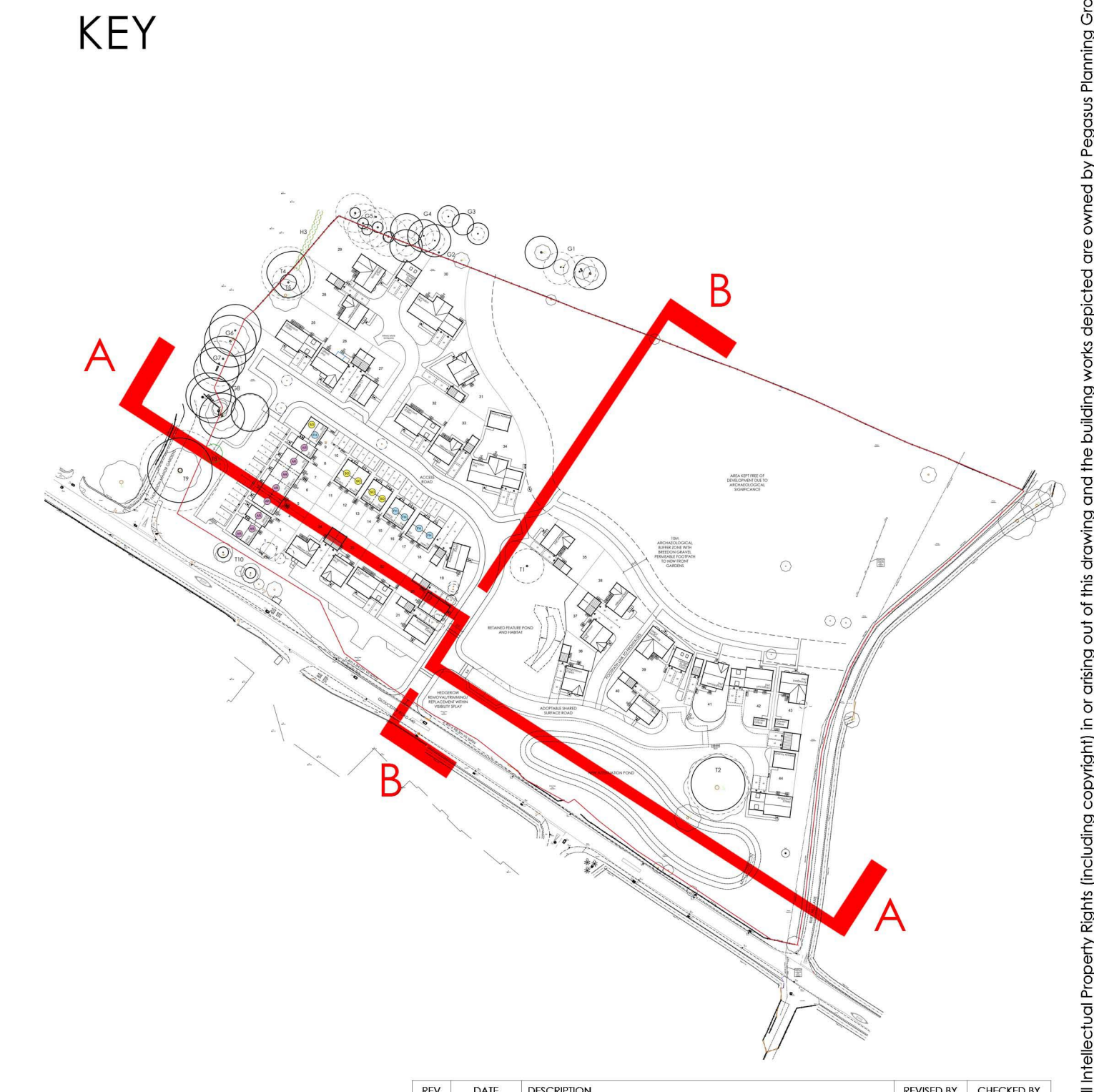
1 SITE SECTION A



2 SITE SECTION A CONTINUED



3 SITE SECTION B



LAND NORTH OF GLOUCESTER ROAD, WESTON UNDER PENYARD
SITE SECTIONS

ABA PROJECT NUMBER: P21-2340
 ABA DRAWING NUMBER: P400
 DRAWING STATUS: PLANNING
 CLIENT: LAGAN HOMES
 SCALE: 1:200@A0
 DATE: 03.02.2023

REVISION: -
 DRAWN BY: GJ
 CHECKED BY: GJ

