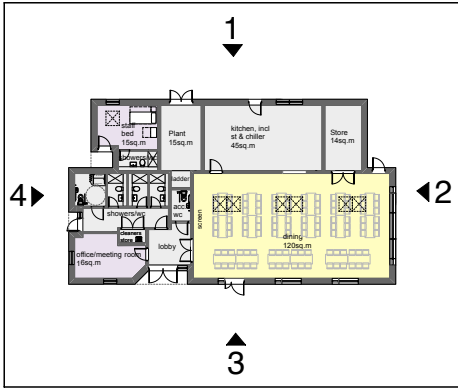


NOTES

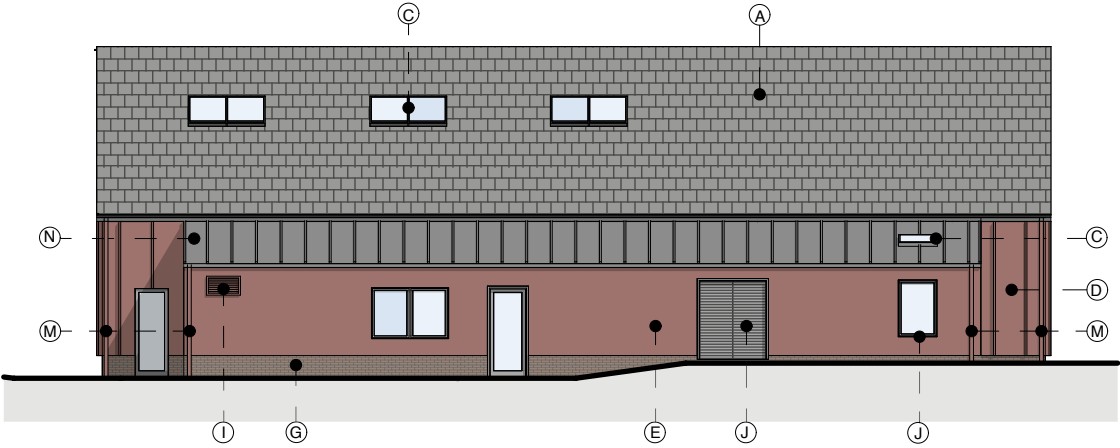
This drawing is the copyright of Quattro Design Architects Ltd and should not be reproduced in whole or in part without written permission. Only figured dimensions to be used for construction. Check all dimensions on site. Any discrepancies are to be reported to the Architect as soon as possible.

REVISIONS

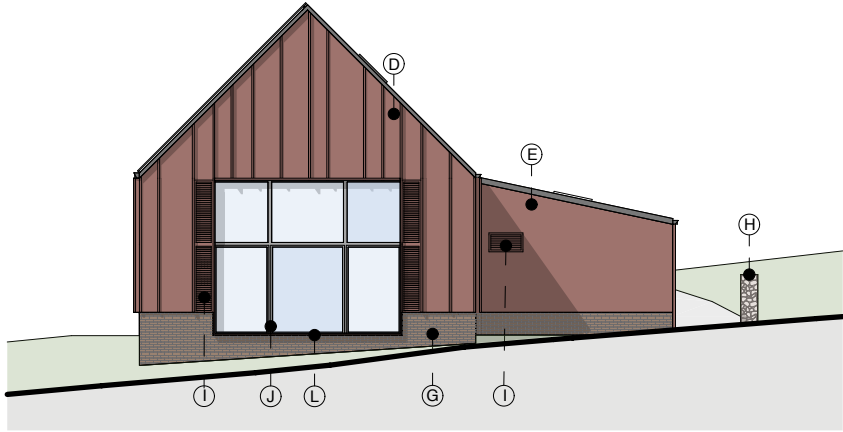
REV. DATE - DRAWN - CHECKED: NOTES  
- 25.07.22 TV - JP: Drawing Created  
A: 05.08.22 KA - JP: Material key added, cladding changed to slate, ,  
louvers added.



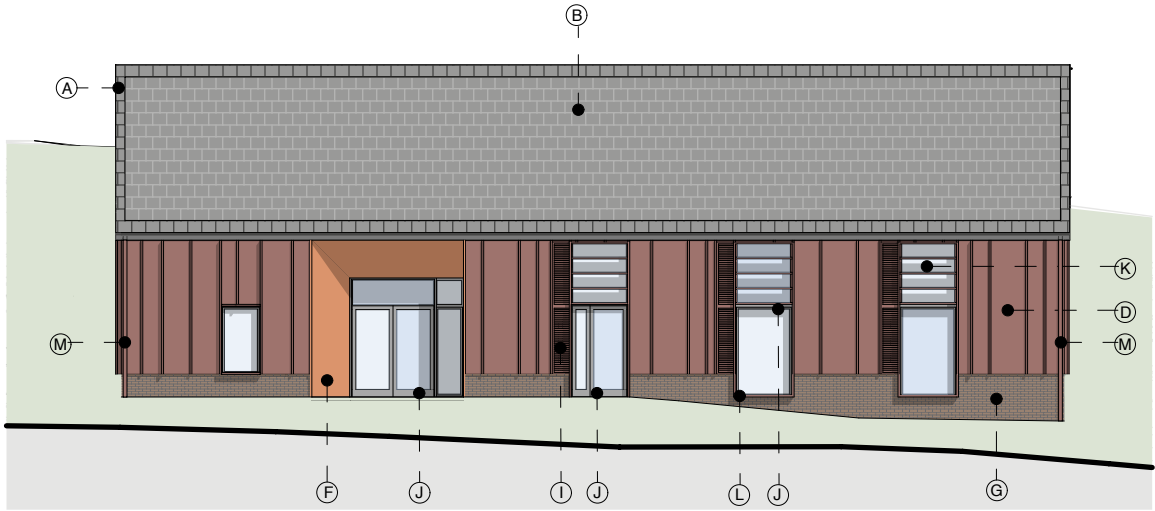
KEY PLAN (not to scale)



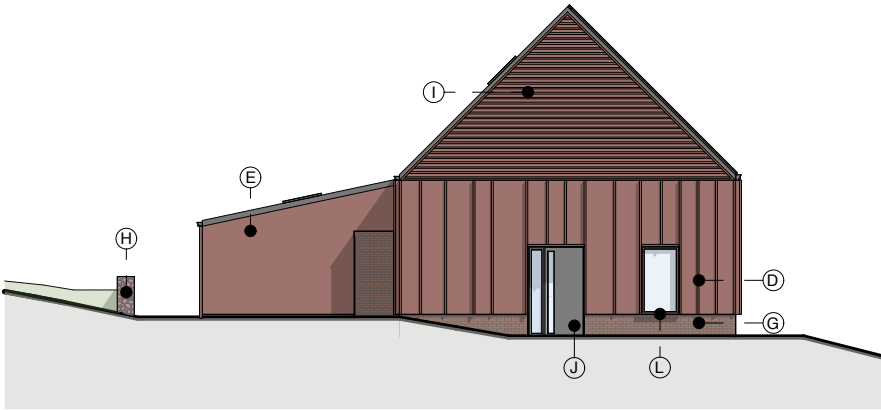
North West Elevation (1)



North East Elevation (2)



South East Elevation (3)

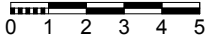


South West Elevation (4)

Material Key

- A: Natural Slate Roof
- B: PV Slate Roof
- C: Roof Lights
- D: Standing Seam Metal Cladding
- E: 'Flat Plank' metal cladding
- F: PPC Aluminium to Front Door Surround
- G: Standstone Masonry Wall
- H: Gabbion Basket Retaining Wall with Natural Stone Infill
- I: PPC Aluminium Louvres to Match Cladding Colour

- J: PPC Aluminium Windows + Doors
- K: PPC Aluminium Brise Soleil to Match Cladding Colour
- L: PPC Aluminium Frame Projection Surround to Match Cladding Colour
- M: Downpipes to Match Cladding Colour
- N: Metal Standing Seam Roof



DRAWING TITLE

Proposed Elevations

PROJECT

'The Lodge'

CLIENT

Longtown Outdoor Learning Trust

SCALE 1:200@A3

DATE July 2022



DRAWING NO. REV

6334-P-700 -

Matthews Warehouse, High Orchard Street  
Gloucester Quays, GL2 5QY T: (01452) 424234