
Nature Conservation Management Plan

ANNEX 3: SUPPORTING INFORMATION

DATA TRAWL

CE07/3249/F

Betts Estates

Nature Conservation Management Plan

CE07 / 3249 / F 7

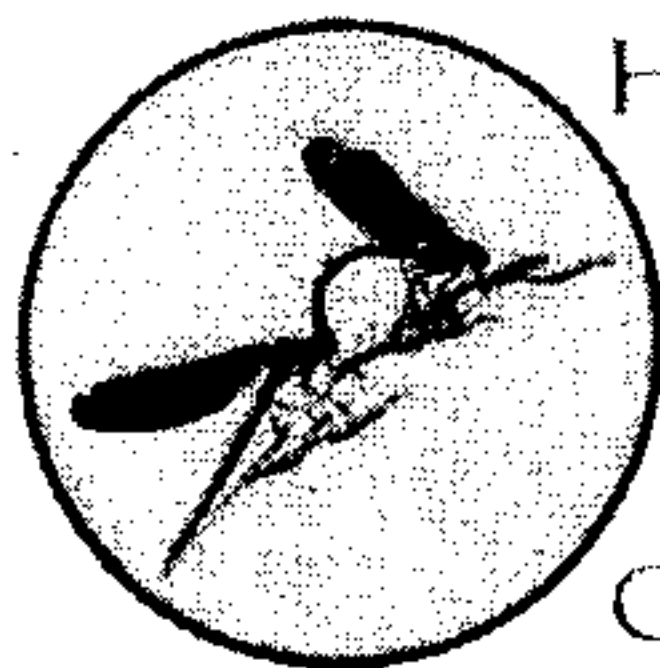
Betts Estates

Nature Conservation Management Plan

PLANTING LIST

Not yet available.

CE07 / 3249 / F



HEREFORDSHIRE
BIOLOGICAL
RECORDS
CENTRE

A partnership project

PO Box 144,
Hereford,
HR1 2YH.

Telephone: (01432) 261538
Fax: (01432) 383354

Email enquiries: hbrc@herefordshire.gov.uk

16th July 2007

George Rudd,
Betts Ecology,
Bank House,
Martley,
Worcester,
WR6 6PB

Our reference: 0632

Dear George

HAMPTON GRANGE NURSING HOME, HAMPTON PARK ROAD, SO528391

Further to your request, I have conducted a search of the database for the area you identified. These records are attached.

In addition, I have produced a map indicating statutory and non statutory sites and have provided citation and register details for the relevant sites.

A Lugg Meadows Site of Special Scientific Interest (SSSI)
The citation details are attached.

B River Lugg Site of Special Scientific Interest (SSSI)
The citation details are attached.

C River Wye Site of Special Scientific Interest (SSSI)
The citation details are attached. In addition, the site is Special Area of Conservation (SAC).
Further information can be found at: -
<http://www.jncc.gov.uk/ProtectedSites/SACselection/sac.asp?EUCode=UK0012642C>

D Tupsley Quarry Local Nature Reserve
No information available

E Broadlands Local Nature Reserve
No information available

F. Lugg Meadows Herefordshire Nature Trust Reserve
Please contact Herefordshire Nature Trust if you require further information

G. Lower House Farm Herefordshire Nature Trust Reserve
Please contact Herefordshire Nature Trust if you require further information

SO53/08 Pool at Rotherwas Special Wildlife Site (SWS)

The register states: "A large pond near an overgrown railway embankment. Oak trees and a dense patch of willow grow at the margins and there is an area of reeds. Coot and moorhen nest on the site"
Date 1990

SO53/09 Rotherwas Park Wood SWS

The register states: "A pure birch woodland. There is a bat roost in the railway tunnel."
Date 1990

SO53/32 Eign Hill Quarry SWS

The register states: "A disused quarry with scrub, woodland, grassland and ponds. The site is managed by Hereford city as an open space and is likely to be designated as a Local Nature Reserve"
Date 1990

SO54/03 Lugg Meadows SWS

Register states: "Lammas land, which is the only recorded site in this part of Britain for the fritillary, which is abundant. The rare narrow-leaved water-dropwort grows in the damper parts. When the meadows flood in winter, large numbers of birds, including swans, are attracted to the site."
Date 1990

SINC_06 Widemarsh Brook

The Register states "It flows the Bulmers site then along side Widemarsh Common. It then becomes the Eign Brook which passes to the rear of the Foley trading estate alongside several adjacent meadows of wildlife value."
Date 1995 - 1996

SINC_20 Land north of Hampton Park Road

No description verified

SINC_21 Litley Court, Hampton Park Road

The Register states "Mainly parkland with scattered trees, shrub layer under the trees consists of rhododendrons, elders, hazel and brambles. The scrub area near to the river is built from the nettle, Indian balsam, hazel, rhododendrons, Chinese gooseberry and columbine. Behind the main building there are some yew hedges adjacent to which is an old walled garden which is no longer used."
Date 1995 - 1996

SINC_22 68 Hampton Park Road

The Register states " (Parkland/Scattered Trees and Semi-Improved Grassland) This is a very rich site with a wide diversity of species present.

Trees of note include willow, poplar and willow. The orchard grassland area and down towards the river has a good variety of plant including hemlock, water dropwort, ground ivy butter cress, barren strawberry clover, stitch-wort, cuckoo pint, meadow sweet, mullein, foxglove, hawkweed, musk mallow, St John's-wort, dock, sorrel, water forget-me-not, speedwell, ragwort, spear/creeping thistle, hairy, tufted and birch vetch, water mint, purple loosestrife, nettle, dandelion, chickweed, toadflax, Indian balsam.

On other parts of the sites wild daffodil, knapweed, birds foot trefoil, cuckoo flower, ragged robin, lady's bed straw, water dropwort, water figwort, and pignut, however, the site had recently been mown when surveyed so some of the plant species listed were not actually present at the time but previously noted by the owner before mowing. Normally the orchard is grazed by sheep.

Fauna present on the site include all three species of woodpecker, moths and butterflies, caddis fly, fox, badger, weasel, stoat, moles, short tailed voles, yellow necked mice, squirrel, coot, kingfisher and the bush cricket.

Date 1995 - 1996

SINC_23 Hampton Grange Nursing Home
The Register states " (Broadleaved Woodland and Neutral Grassland)

Behind the house, the ground slopes steeply to the river bank and is therefore little used. The area is wooded with mature trees lime, elm, willow, cherry, hazel, oak, cedar, copper beech, sycamore, ash and elder.

Other species include wild angelica, campion, water dropwort, ferns, moss, Indian balsam and brambles. Evidence of badger setts also exist in the wooded areas and foxes, kingfishers and lesser spotted woodpeckers."

Date 1995 - 1996

SINC_24 Sewage Works

The register states "An edging of willow on the banks of the River Wye next to the sewage works at Bartonsham. It has a public footpath running through it."

Date 1995 - 1996

SINC_25 Eign Brook

The register states: "Where the brook runs alongside the County Hospital it is densely overgrown with natural mixed vegetation and reed beds which offer rich habitat free from human intrusion."

Date 1995 - 1996

SINC_26 Eign Brook Corridor

The register states: "Several meadows to the rear of Foley trading estate."

Date 1995 - 1996

SINC_27 Scrub aside Eign Brook

The register states: "Banks of Eign Brook along railway line with good low scrub including large patch of raspberry, rose, blackberry, elder, young sycamore. Also teasel, rosebay willow-herb, ivy and fool's parsley. The channel is choked with great willow-herb and bittersweet.

Just above the railway crossing the brook is about 2m wide shallow, gravel bottomed, with earth banks, good scrub cover and a crack willow."

Date 1995 - 1996

SINC_28 Castle Pool

The Register states "Castle Pool forms the remains of the original castle moat and is managed as an ornamental pool. It is frequented by mallards and other duck species."

Date 1995 - 1996

SINC_29 Castle Green River Bank

The Register states "A steep bank next to the River Wye which is part of the Castle Green. Habitat improvement would be beneficial to the river."

Date 1995 - 1996

SINC_54 Active Railway South of Wye

The Register states "Part of the Newport-Shrewsbury railway line which passes through the city. It has several areas of scrub which are of importance to wildlife."

Date 1995 - 1996

SINC_55 Withy Brook

The Register states "It forms a major part of the south-eastern boundary of the city. Parts of the stream near the river have quite dense shrub on the banks."

Date 1995 - 1996

- Grid references containing a combination of letters and numbers, for example 'SO54E' are formulated according to the DINTY system. Such records are often from the botanical recording, whereby a 10km square is divided into twenty-five equal 2km x 2km squares, each alpha-coded, thus:

E	J	P	U	Z
D	I	N	T	Y
C	H	M	S	X
B	G	L	R	W
A	F	K	Q	V

Therefore the correct full grid references for SO54E are as follows:
SO5048, SO5049, SO5148 and
SO5149 i.e. four 1km squares.

Records of badger setts have been revealed within your search area(s). These records (and additional advice and guidance) can be provided by Herefordshire Badger Group. Please contact them for further information:

Peter Whiles, Herefordshire Badger Group, Damson House, Third Avenue, Greytree, Ross-on-Wye, Herefordshire HR9 7HS.
Telephone: (01989) 566018, email: peterwhiles@btinternet.com, or if Peter is unavailable, Louise Hamilton: Tel. (01600) 890830, e-mail louise@cobrasystems.cix.co.uk

Please keep location details of any bat, badger or newt records confidential. Please get in touch if you have any queries. I can confirm that the charge for the retrieval and analysis of your requests is £120 exclusive of VAT. You will receive an invoice from Herefordshire Council shortly: the Council handle all financial accounting on behalf of HBRC.

I hope that this information proves to be useful. I look forwards to receiving new findings and biological records which any survey you undertake yields: help us to improve the information available for natural heritage conservation, research, advice, education and public information.

Yours sincerely,

Rachel Price
Biological Data Assistant
Herefordshire Biological Records Centre

Hampton Grange Nursing Home, Hampton Park Road

SO528391

Protected and Notable Species within 2km

Species		Status, if known	Grid Ref.	Year	Count	Sex/Stage
Common Frog	<i>Rana temporaria</i>	BC3 WCA5(S9(5))	SO53234008	2006	1	Adult
Great Crested Newt	<i>Triturus cristatus</i>	BC2 ECH2,4 WCA5 UKB	SO53234008	2006	5	Adult
Smooth Newt	<i>Triturus vulgaris</i>	BC3 WCA5(S9(5))	SO53234008	2006	4	Adult
Common Frog	<i>Rana temporaria</i>	BC3 WCA5(S9(5))	SO532400	2006	5	Adult
Palmate Newt	<i>Triturus helveticus</i>	BC3 WCA5(S9(5))	SO532400	2006	38	Adult
Smooth Newt	<i>Triturus vulgaris</i>	BC3 WCA5(S9(5))	SO532400	2006	16	Adult
Smooth Newt	<i>Triturus vulgaris</i>	BC3 WCA5(S9(5))	SO532400	2006	4	egg/ovum
Chiroptera	<i>Chiroptera</i>	BC3 BoC2 ECH4 HSP	SO538394	2006	1	Droppings
Common Toad	<i>Bufo bufo</i>	BC3 WCA5(S9(5))	SO510397	2005	4	present
Soprano Pipistrelle	<i>Pipistrellus pygmaeus</i>	BC2 BoC2 ECH4 WCA5,6 UKB	SO513395	2005	131	roosting
Slow-Worm	<i>Anguis fragilis</i>	BC3 WCA5(S9(1) killing/injuring only, S9(5))	SO517398	2005	+	present
Smooth Newt	<i>Triturus vulgaris</i>	BC3 WCA5(S9(5))	SO5178139829	2005	2	present
Common Pipistrelle	<i>Pipistrellus pipistrellus</i>	BC2 BoC2 ECH4 WCA5,6 UKB	SO519399	2005	1	in flight
Common Pipistrelle	<i>Pipistrellus pipistrellus</i>	BC2 BoC2 ECH4 WCA5,6 UKB	SO519399	2005	2	in flight
Common Pipistrelle	<i>Pipistrellus pipistrellus</i>	BC2 BoC2 ECH4 WCA5,6 UKB	SO519399	2005	2	in flight
Common Frog	<i>Rana temporaria</i>	BC3 WCA5(S9(5))	SO519399	2005	1	Adult
Common Frog	<i>Rana temporaria</i>	BC3 WCA5(S9(5))	SO519399	2005	1	Breeding confirmed
Common Frog	<i>Rana temporaria</i>	BC3 WCA5(S9(5))	SO519399	2005	1	Breeding confirmed
Common Frog	<i>Rana temporaria</i>	BC3 WCA5(S9(5))	SO519399	2005	1	Breeding confirmed
Great Crested Newt	<i>Triturus cristatus</i>	BC2 ECH2,4 WCA5 UKB	SO519399	2005	1	Adult
Great Crested Newt	<i>Triturus cristatus</i>	BC2 ECH2,4 WCA5 UKB	SO519399	2005	1	Breeding confirmed
Great Crested Newt	<i>Triturus cristatus</i>	BC2 ECH2,4 WCA5 UKB	SO519399	2005	1	Breeding confirmed
Great Crested Newt	<i>Triturus cristatus</i>	BC2 ECH2,4 WCA5 UKB	SO519399	2005	2	Breeding confirmed
Slow-Worm	<i>Anguis fragilis</i>	BC3 WCA5(S9(1) killing/injuring only, S9(5))	SO519399	2005	1	Adult
Slow-Worm	<i>Anguis fragilis</i>	BC3 WCA5(S9(1) killing/injuring only, S9(5))	SO519399	2005	1	Adult

CE07/3249/F

Herefordshire Biological Records Centre

Slow-Worm	<i>Anguis fragilis</i>	BC3 WCA5(S9(1) killing/injuring only, S9(5))	SO519399	2005	1	Adult
Slow-Worm	<i>Anguis fragilis</i>	BC3 WCA5(S9(1) killing/injuring only, S9(5))	SO519399	2005	1	Breeding confirmed
Smooth Newt	<i>Triturus vulgaris</i>	BC3 WCA5(S9(5))	SO519399	2005	1	Adult
Great Crested Newt	<i>Triturus cristatus</i>	BC2 ECH2,4 WCA5 UKB	SO521392	2005	1	adult
Great Crested Newt	<i>Triturus cristatus</i>	BC2 ECH2,4 WCA5 UKB	SO521392	2005	1	Adult
Brown Long-Eared Bat	<i>Plecotus auritus</i>	BC2 BoC2 ECH4 WCA5,6 HSP	SO522408	2005	1	Droppings
Pipistrelle	<i>Pipistrellus pipistrellus</i>	BC2 BoC2 ECH4 WCA5,6 UKB	SO522408	2005	4	feeding
Slow-Worm	<i>Anguis fragilis</i>	BC3 WCA5(S9(1) killing/injuring only, S9(5))	SO523399	2005	1	Adult
Common Frog	<i>Rana temporaria</i>	BC3 WCA5(S9(5))	SO524410	2005	10+	present
Common Frog	<i>Rana temporaria</i>	BC3 WCA5(S9(5))	SO530391	2005	1	Adult
Common Frog	<i>Rana temporaria</i>	BC3 WCA5(S9(5))	SO530391	2005	1	Adult
Common Frog	<i>Rana temporaria</i>	BC3 WCA5(S9(5))	SO530391	2005	1	Adult
Common Frog	<i>Rana temporaria</i>	BC3 WCA5(S9(5))	SO530391	2005	7	Adult
Common Frog	<i>Rana temporaria</i>	BC3 WCA5(S9(5))	SO530391	2005	4	Adult
Smooth Newt	<i>Triturus vulgaris</i>	BC3 WCA5(S9(5))	SO530391	2005	12	Adult
Smooth Newt	<i>Triturus vulgaris</i>	BC3 WCA5(S9(5))	SO530391	2005	2	Adult
Smooth Newt	<i>Triturus vulgaris</i>	BC3 WCA5(S9(5))	SO530391	2005	5	Breeding confirmed
Smooth Newt	<i>Triturus vulgaris</i>	BC3 WCA5(S9(5))	SO530391	2005	63	Adult
Smooth Newt	<i>Triturus vulgaris</i>	BC3 WCA5(S9(5))	SO530391	2005	1	egg/ovum
Smooth Newt	<i>Triturus vulgaris</i>	BC3 WCA5(S9(5))	SO530391	2005	25	Adult
Smooth Newt	<i>Triturus vulgaris</i>	BC3 WCA5(S9(5))	SO530391	2005	2	Adult
Smooth Newt	<i>Triturus vulgaris</i>	BC3 WCA5(S9(5))	SO530391	2005	43	Adult
Smooth Newt	<i>Triturus vulgaris</i>	BC3 WCA5(S9(5))	SO530391	2005	17	Adult
Smooth Newt	<i>Triturus vulgaris</i>	BC3 WCA5(S9(5))	SO530391	2005	3	Adult
Smooth Newt	<i>Triturus vulgaris</i>	BC3 WCA5(S9(5))	SO530391	2005	52	Adult
Smooth Newt	<i>Triturus vulgaris</i>	BC3 WCA5(S9(5))	SO530391	2005	8	Adult
Common Frog	<i>Rana temporaria</i>	BC3 WCA5(S9(5))	SO532393	2005	20	present
Kestrel	<i>Falco tinnunculus</i>	BC2 BoC2 CITES2	SO539405	2005	2	present
Kestrel	<i>Falco tinnunculus</i>	BC2 BoC2 CITES2	SO539405	2005	1	present
Kestrel	<i>Falco tinnunculus</i>	BC2 BoC2 CITES2	SO539405	2005	1	present
Kestrel	<i>Falco tinnunculus</i>	BC2 BoC2 CITES2	SO539405	2005	2	present
Starling	<i>Sturnus vulgaris</i>		SO539405	2005	2	present
Starling	<i>Sturnus vulgaris</i>		SO539405	2005	2	present
Starling	<i>Sturnus vulgaris</i>		SO539405	2005	1	present

CE07/3249/F

Herefordshire Biological Records Centre

Bullfinch	<i>Pyrrhula pyrrhula</i>		SO508395	2004	1	present
Daubenton's Bat	<i>Myotis daubentoni</i>	BC3 BoC2 ECH4 HSP	SO515386	2004	Present	in flight
Starling	<i>Sturnus vulgaris</i>		SO515387	2004	Present	present
Kestrel	<i>Falco tinnunculus</i>	BC2 BoC2 CITES2	SO516386	2004	1	present
Slow-Worm	<i>Anguis fragilis</i>	BC3 WCA5(S9(1) killing/injuring only, S9(5))	SO517398	2004	+	present
Common Frog	<i>Rana temporaria</i>	BC3 WCA5(S9(5))	SO519404	2004	Present	egg/ovum
Common Frog	<i>Rana temporaria</i>	BC3 WCA5(S9(5))	SO519404	2004	12	present
Bullfinch	<i>Pyrrhula pyrrhula</i>		SO522392	2004	2	male
Kingfisher	<i>Alcedo atthis</i>	BC2 ECB WCA1i	SO529392	2004	1	present
Common Frog	<i>Rana temporaria</i>	BC3 WCA5(S9(5))	SO529404	2004	24	present
Song Thrush	<i>Turdus philomelos</i>	UKB	SO529404	2004	1	present
Starling	<i>Sturnus vulgaris</i>		SO529404	2004	21	present
House Sparrow	<i>Passer domesticus</i>		SO530403	2004	08-Dec	present
Common Frog	<i>Rana temporaria</i>	BC3 WCA5(S9(5))	SO530404	2004	5+	present
Common Frog	<i>Rana temporaria</i>	BC3 WCA5(S9(5))	SO530404	2004	Present	egg/ovum
House Sparrow	<i>Passer domesticus</i>		SO532393	2004	14	present
House Sparrow	<i>Passer domesticus</i>		SO534392	2004	4	present
Common Frog	<i>Rana temporaria</i>	BC3 WCA5(S9(5))	SO534393	2004	Present	egg/ovum
Kestrel	<i>Falco tinnunculus</i>	BC2 BoC2 CITES2	SO539405	2004	1	Present
Reed Bunting	<i>Emberiza schoeniclus</i>	BC2	SO539405	2004	4	Present
Spotted Flycatcher	<i>Muscicapa striata</i>	BC2 BoC2	SO539405	2004	6	present
Common Frog	<i>Rana temporaria</i>	BC3 WCA5(S9(5))	SO511385	2003	1	Adult
Song Thrush	<i>Turdus philomelos</i>	UKB	SO514395	2003	1	present
Reed Bunting	<i>Emberiza schoeniclus</i>	BC2	SO515375	2003	1	present
Song Thrush	<i>Turdus philomelos</i>	UKB	SO515375	2003	1	present
Song Thrush	<i>Turdus philomelos</i>	UKB	SO515375	2003	1	present
Song Thrush	<i>Turdus philomelos</i>	UKB	SO515375	2003	1	present
Song Thrush	<i>Turdus philomelos</i>	UKB	SO515375	2003	1	present
Song Thrush	<i>Turdus philomelos</i>	UKB	SO515375	2003	1	present
Song Thrush	<i>Turdus philomelos</i>	UKB	SO515375	2003	1	present
Song Thrush	<i>Turdus philomelos</i>	UKB	SO515375	2003	1	present
Song Thrush	<i>Turdus philomelos</i>	UKB	SO515375	2003	2	present
Song Thrush	<i>Turdus philomelos</i>	UKB	SO515375	2003	1	present
Starling	<i>Sturnus vulgaris</i>		SO515375	2003	7	present
Starling	<i>Sturnus vulgaris</i>		SO515375	2003	20	present
Starling	<i>Sturnus vulgaris</i>		SO515375	2003	40	present
Starling	<i>Sturnus vulgaris</i>		SO515375	2003	1	present
Starling	<i>Sturnus vulgaris</i>		SO515375	2003	30	present

CE07/3249/F

Herefordshire Biological Records Centre

Starling	<i>Sturnus vulgaris</i>		SO515375	2003	30	present
Starling	<i>Sturnus vulgaris</i>		SO515375	2003	26	present
Starling	<i>Sturnus vulgaris</i>		SO515375	2003	30	present
Starling	<i>Sturnus vulgaris</i>		SO515375	2003	26	present
Starling	<i>Sturnus vulgaris</i>		SO515375	2003	7	present
Starling	<i>Sturnus vulgaris</i>		SO515375	2003	30	present
Starling	<i>Sturnus vulgaris</i>		SO515375	2003	3	present
Kestrel	<i>Falco tinnunculus</i>	BC2 BoC2 CITES2	SO515392	2003	1	present
Kestrel	<i>Falco tinnunculus</i>	BC2 BoC2 CITES2	SO515392	2003	1	present
Starling	<i>Sturnus vulgaris</i>		SO515392	2003	Approx 500	present
Starling	<i>Sturnus vulgaris</i>		SO515392	2003	Approx 500	present
Common Frog	<i>Rana temporaria</i>	BC3 WCA5(S9(5))	SO516394	2003	20	Adult
Slow-Worm	<i>Anguis fragilis</i>	BC3 WCA5(S9(1) killing/injuring only, S9(5))	SO517398	2003	1	Adult
Common Frog	<i>Rana temporaria</i>	BC3 WCA5(S9(5))	SO518406	2003	1	present
Common Frog	<i>Rana temporaria</i>	BC3 WCA5(S9(5))	SO519399	2003	2	juvenile
Common Frog	<i>Rana temporaria</i>	BC3 WCA5(S9(5))	SO519399	2003	4	adult
Common Frog	<i>Rana temporaria</i>	BC3 WCA5(S9(5))	SO519404	2003	Present	egg/ovum
Common Frog	<i>Rana temporaria</i>	BC3 WCA5(S9(5))	SO519404	2003	12	present
Common Frog	<i>Rana temporaria</i>	BC3 WCA5(S9(5))	SO520405	2003	6	Adult
Common Frog	<i>Rana temporaria</i>	BC3 WCA5(S9(5))	SO521405	2003	30	present
Common Frog	<i>Rana temporaria</i>	BC3 WCA5(S9(5))	SO522396	2003	28	Adult
Common Frog	<i>Rana temporaria</i>	BC3 WCA5(S9(5))	SO522396	2003	20	Adult
Starling	<i>Sturnus vulgaris</i>		SO522403	2003	50000	roosting
Starling	<i>Sturnus vulgaris</i>		SO525397	2003	12	present
Starling	<i>Sturnus vulgaris</i>		SO525397	2003	Approx 60	present
Starling	<i>Sturnus vulgaris</i>		SO525397	2003	Approx 200	present
Great Crested Newt	<i>Triturus cristatus</i>	BC2 ECH2,4 WCA5 UKB	SO526399	2003	6	Breeding confirmed
Smooth Newt	<i>Triturus vulgaris</i>	BC3 WCA5(S9(5))	SO526399	2003	25	Breeding confirmed
Common Frog	<i>Rana temporaria</i>	BC3 WCA5(S9(5))	SO527391	2003	Present	egg/ovum
Common Frog	<i>Rana temporaria</i>	BC3 WCA5(S9(5))	SO527392	2003	Present	egg/ovum
Common Frog	<i>Rana temporaria</i>	BC3 WCA5(S9(5))	SO527392	2003	08/10/2006	Adult
Common Toad	<i>Bufo bufo</i>	BC3 WCA5(S9(5))	SO527392	2003	1	Adult
Common Frog	<i>Rana temporaria</i>	BC3 WCA5(S9(5))	SO527399	2003	Present	egg/ovum
Common Frog	<i>Rana temporaria</i>	BC3 WCA5(S9(5))	SO527399	2003	Present	egg/ovum
Common Frog	<i>Rana temporaria</i>	BC3 WCA5(S9(5))	SO527399	2003	Present	egg/ovum
Common Frog	<i>Rana temporaria</i>	BC3 WCA5(S9(5))	SO527399	2003	Present	egg/ovum
House Sparrow	<i>Passer domesticus</i>		SO528399	2003	1	present

CE07/3249/F

Herefordshire Biological Records Centre

House Sparrow	<i>Passer domesticus</i>		SO528399	2003	1	present
Common Frog	<i>Rana temporaria</i>	BC3 WCA5(S9(5))	SO529396	2003	Present	egg/ovum
Common Frog	<i>Rana temporaria</i>	BC3 WCA5(S9(5))	SO529396	2003	35	present
Common Frog	<i>Rana temporaria</i>	BC3 WCA5(S9(5))	SO529396	2003	20	Adult
Common Frog	<i>Rana temporaria</i>	BC3 WCA5(S9(5))	SO530402	2003	1	Adult
Common Frog	<i>Rana temporaria</i>	BC3 WCA5(S9(5))	SO530404	2003	3	Adult
Common Frog	<i>Rana temporaria</i>	BC3 WCA5(S9(5))	SO530405	2003	20	Adult
Common Frog	<i>Rana temporaria</i>	BC3 WCA5(S9(5))	SO530405	2003	20	present
Common Frog	<i>Rana temporaria</i>	BC3 WCA5(S9(5))	SO532392	2003	Many	present
Common Frog	<i>Rana temporaria</i>	BC3 WCA5(S9(5))	SO532393	2003	2	present
Common Frog	<i>Rana temporaria</i>	BC3 WCA5(S9(5))	SO532394	2003	20+	present
Common Frog	<i>Rana temporaria</i>	BC3 WCA5(S9(5))	SO5337	2003	1	present
Spotted Flycatcher	<i>Muscicapa striata</i>	BC2 BoC2	SO5337	2003	1	present
Turtle Dove	<i>Streptopelia turtur</i>		SO535403	2003	02-May	present
Club-Tailed Dragonfly	<i>Gomphus vulgatissimus</i>		SO535403	2003	8	Adult
Common Frog	<i>Rana temporaria</i>	BC3 WCA5(S9(5))	SO535403	2003	3	Adult
Common Frog	<i>Rana temporaria</i>	BC3 WCA5(S9(5))	SO535404	2003	1	present
Song Thrush	<i>Turdus philomelos</i>	UKB	SO536383	2003	Present	present
Bullfinch	<i>Pyrrhula pyrrhula</i>		SO536383	2003	Present	present
Song Thrush	<i>Turdus philomelos</i>	UKB	SO536383	2003	2	present
Starling	<i>Sturnus vulgaris</i>		SO536393	2003	60	Adult
Common Frog	<i>Rana temporaria</i>	BC3 WCA5(S9(5))	SO536393	2003	Present	egg/ovum
Common Frog	<i>Rana temporaria</i>	BC3 WCA5(S9(5))	SO536402	2003	+	Burrow
Badger	<i>Meles meles</i>	BC3 PBA WCA6	SO538391	2003	3	roosting
Common Pipistrelle	<i>Pipistrellus pipistrellus</i>	BC2 BoC2 ECH4 WCA5,6 UKB	SO538391	2003	4	roosting
Common Pipistrelle	<i>Pipistrellus pipistrellus</i>	BC2 BoC2 ECH4 WCA5,6 UKB	SO538392	2003	1	dead
Common Toad	<i>Bufo bufo</i>	BC3 WCA5(S9(5))	SO538406	2003	1	present
Kingfisher	<i>Alcedo atthis</i>	BC2 ECB WCA1i	SO540376	2003	Present	present
Lesser Horseshoe Bat	<i>Rhinolophus hipposideros</i>	BC2 BoC2 ECH2,4 WCA5,6 UKB HSP	SO5438	2003	Present	present
Kingfisher	<i>Alcedo atthis</i>	BC2 ECB WCA1i	SO514395	2002	1	present
Linnet	<i>Carduelis cannabina</i>	BC2	SO514395	2002	5	present
Song Thrush	<i>Turdus philomelos</i>	UKB	SO514395	2002	2	present
Song Thrush	<i>Turdus philomelos</i>	UKB	SO514395	2002	2	present
Song Thrush	<i>Turdus philomelos</i>	UKB	SO514395	2002	2	present
Bullfinch	<i>Pyrrhula pyrrhula</i>		SO515375	2002	2	adult
Song Thrush	<i>Turdus philomelos</i>	UKB	SO515375	2002	2	present
Song Thrush	<i>Turdus philomelos</i>	UKB	SO515375	2002	1	present
Song Thrush	<i>Turdus philomelos</i>	UKB	SO515375	2002	1	present
Song Thrush	<i>Turdus philomelos</i>	UKB	SO515375	2002	1	present
Song Thrush	<i>Turdus philomelos</i>	UKB	SO515375	2002	2	present

CE07/3249/F

Herefordshire Biological Records Centre

Song Thrush	<i>Turdus philomelos</i>	UKB	SO515375	2002	1	present
Song Thrush	<i>Turdus philomelos</i>	UKB	SO515375	2002	1	present
Song Thrush	<i>Turdus philomelos</i>	UKB	SO515375	2002	3	present
Song Thrush	<i>Turdus philomelos</i>	UKB	SO515375	2002	2	present
Song Thrush	<i>Turdus philomelos</i>	UKB	SO515375	2002	1	present
Song Thrush	<i>Turdus philomelos</i>	UKB	SO515375	2002	1	present
Song Thrush	<i>Turdus philomelos</i>	UKB	SO515375	2002	3	present
Song Thrush	<i>Turdus philomelos</i>	UKB	SO515375	2002	1	present
Song Thrush	<i>Turdus philomelos</i>	UKB	SO515375	2002	1	present
Song Thrush	<i>Turdus philomelos</i>	UKB	SO515375	2002	1	present
Spotted Flycatcher	<i>Muscicapa striata</i>	BC2 BoC2	SO515375	2002	1	present
Spotted Flycatcher	<i>Muscicapa striata</i>	BC2 BoC2	SO515375	2002	1	present
Spotted Flycatcher	<i>Muscicapa striata</i>	BC2 BoC2	SO515375	2002	1	present
Starling	<i>Sturnus vulgaris</i>		SO515375	2002	20 Max	present
Starling	<i>Sturnus vulgaris</i>		SO515375	2002	9 Max	present
Starling	<i>Sturnus vulgaris</i>		SO515375	2002	5 Max	present
Starling	<i>Sturnus vulgaris</i>		SO515375	2002	4 Max	present
Starling	<i>Sturnus vulgaris</i>		SO515375	2002	13	Breeding confirmed
Starling	<i>Sturnus vulgaris</i>		SO515375	2002	14 Max	present
Starling	<i>Sturnus vulgaris</i>		SO515375	2002	30 Max	present
Starling	<i>Sturnus vulgaris</i>		SO515375	2002	2 Max	present
Starling	<i>Sturnus vulgaris</i>		SO515375	2002	10 Max	present
Starling	<i>Sturnus vulgaris</i>		SO515375	2002	50 Max	present
Starling	<i>Sturnus vulgaris</i>		SO515375	2002	20 Max	present
Kestrel	<i>Falco tinnunculus</i>	BC2 BoC2 CITES2	SO515392	2002	1	present
Linnet	<i>Carduelis cannabina</i>	BC2	SO515392	2002	2	present
Starling	<i>Sturnus vulgaris</i>		SO515392	2002	140	present
Starling	<i>Sturnus vulgaris</i>		SO515392	2002	c.100	present
Song Thrush	<i>Turdus philomelos</i>	UKB	SO521377	2002	2	present
Barn Owl	<i>Tyto alba</i>	BC2 CITES2 WCA1i HSP	SO5237	2002	1	present
Bullfinch	<i>Pyrrhula pyrrhula</i>		SO5237	2002	2	adult
Bullfinch	<i>Pyrrhula pyrrhula</i>		SO525397	2002	2	adult
Bullfinch	<i>Pyrrhula pyrrhula</i>		SO525397	2002	2	adult
Bullfinch	<i>Pyrrhula pyrrhula</i>		SO525397	2002	2	adult
Starling	<i>Sturnus vulgaris</i>		SO525397	2002	12	present
Starling	<i>Sturnus vulgaris</i>		SO525397	2002	47	present
Starling	<i>Sturnus vulgaris</i>		SO525397	2002	17	present

CE07 / 3249 / F

Herefordshire Biological Records Centre

Starling	<i>Sturnus vulgaris</i>		SO525397	2002	c.14	Breeding confirmed
Barn Owl	<i>Tyto alba</i>	BC2 CITES2 WCA1i HSP	SO5339	2002	1	present
Linnet	<i>Carduelis cannabina</i>	BC2	SO539405	2002	c.100	present
Peregrine	<i>Falco peregrinus</i>	BC2 BoC2 CITES1 ECB WCA1i	SO539405	2002	1	female
Starling	<i>Sturnus vulgaris</i>		SO539405	2002	8	present
Starling	<i>Sturnus vulgaris</i>		SO539405	2002	4	present
Starling	<i>Sturnus vulgaris</i>		SO539405	2002	2	present
Starling	<i>Sturnus vulgaris</i>		SO5439	2002	c.200	present
Song Thrush	<i>Turdus philomelos</i>	UKB	SO515375	2001	2	present
Song Thrush	<i>Turdus philomelos</i>	UKB	SO515375	2001	2	Breeding confirmed
Song Thrush	<i>Turdus philomelos</i>	UKB	SO515375	2001	1	present
Song Thrush	<i>Turdus philomelos</i>	UKB	SO515375	2001	1	present
Song Thrush	<i>Turdus philomelos</i>	UKB	SO515375	2001	1	present
Song Thrush	<i>Turdus philomelos</i>	UKB	SO515375	2001	1	present
Song Thrush	<i>Turdus philomelos</i>	UKB	SO515375	2001	1	present
Song Thrush	<i>Turdus philomelos</i>	UKB	SO515375	2001	1	present
Starling	<i>Sturnus vulgaris</i>		SO515375	2001	30	present
Starling	<i>Sturnus vulgaris</i>		SO515375	2001	8	present
Starling	<i>Sturnus vulgaris</i>		SO515375	2001	30	present
Starling	<i>Sturnus vulgaris</i>		SO515385	2001	Aprox 100	present
Kestrel	<i>Falco tinnunculus</i>	BC2 BoC2 CITES2	SO515387	2001	1	present
Spotted Flycatcher	<i>Muscicapa striata</i>	BC2 BoC2	SO515387	2001	1	Breeding confirmed
Spotted Flycatcher	<i>Muscicapa striata</i>	BC2 BoC2	SO515387	2001	5	Breeding confirmed
Kestrel	<i>Falco tinnunculus</i>	BC2 BoC2 CITES2	SO515392	2001	1	present
Kestrel	<i>Falco tinnunculus</i>	BC2 BoC2 CITES2	SO515392	2001	1	Adult Female
Otter	<i>Lutra lutra</i>	BC2 ECH2,4 CITES1 WCA5,6 UKB	SO52233926	2001	+	Droppings
Black Poplar	<i>Populus nigra betulifolia</i>		SO523376	2001	1	present
Mistletoe	<i>Viscum album</i>		SO523380	2001	Present	present
Mistletoe	<i>Viscum album</i>		SO523381	2001	+	present
Badger	<i>Meles meles</i>	BC3 PBA WCA6	SO523388	2001	Present	present
Badger	<i>Meles meles</i>	BC3 PBA WCA6	SO523389	2001	+	Burrow
Bullfinch	<i>Pyrrhula pyrrhula</i>		SO5238	2001	Present	probable breeding

CE 07 / 32249 / F

Herefordshire Biological Records Centre

House Sparrow	<i>Passer domesticus</i>		SO5238	2001	Present	proved breeding
Kestrel	<i>Falco tinnunculus</i>	BC2 BoC2 CITES2	SO5238	2001	Present	possible breeding
Kingfisher	<i>Alcedo atthis</i>	BC2 ECB WCA1i	SO5238	2001	Present	possible breeding
Marsh Tit	<i>Parus palustris</i>	BC2	SO5238	2001	Present	probable breeding
Slow-Worm	<i>Anguis fragilis</i>	BC3 WCA5(S9(1) killing/injuring only, S9(5))	SO5238	2001	9	adult
Song Thrush	<i>Turdus philomelos</i>	UKB	SO5238	2001	Present	probable breeding
Starling	<i>Sturnus vulgaris</i>		SO5238	2001	Present	probable breeding
Lesser Horseshoe Bat	<i>Rhinolophus hipposideros</i>	BC2 BoC2 ECH2,4 WCA5,6 UKB HSP	SO524376	2001	Present	present
Common Frog	<i>Rana temporaria</i>	BC3 WCA5(S9(5))	SO524380	2001	1	Adult
Common Toad	<i>Bufo bufo</i>	BC3 WCA5(S9(5))	SO524380	2001	1	Adult
Common Frog	<i>Rana temporaria</i>	BC3 WCA5(S9(5))	SO524382	2001	Present	present
Common Frog	<i>Rana temporaria</i>	BC3 WCA5(S9(5))	SO524382	2001	1	Adult
Common Frog	<i>Rana temporaria</i>	BC3 WCA5(S9(5))	SO524382	2001	+	present
Common Toad	<i>Bufo bufo</i>	BC3 WCA5(S9(5))	SO524382	2001	Present	present
Common Toad	<i>Bufo bufo</i>	BC3 WCA5(S9(5))	SO524382	2001	+	present
Smooth Newt	<i>Triturus vulgaris</i>	BC3 WCA5(S9(5))	SO524382	2001	1	Adult
Mistletoe	<i>Viscum album</i>		SO524384	2001	Present	present
Mistletoe	<i>Viscum album</i>		SO524384	2001	+	present
Starling	<i>Sturnus vulgaris</i>		SO525397	2001	27	present
Lesser Horseshoe Bat	<i>Rhinolophus hipposideros</i>	BC2 BoC2 ECH2,4 WCA5,6 UKB HSP	SO528374	2001	Present	present
Lesser Horseshoe Bat	<i>Rhinolophus hipposideros</i>	BC2 BoC2 ECH2,4 WCA5,6 UKB HSP	SO528379	2001	Present	present
Slow-Worm	<i>Anguis fragilis</i>	BC3 WCA5(S9(1) killing/injuring only, S9(5))	SO528383	2001	9	Adult
Brown Long-Eared Bat	<i>Plecotus auitus</i>	BC2 BoC2 ECH4 WCA5,6 HSP	SO528386	2001	Present	present
Natterer's Bat	<i>Myotis nattereri</i>	BC2 BoC2 ECH4 WCA5,6 HSP	SO528386	2001	Present	present
Natterer's Bat	<i>Myotis nattereri</i>	BC2 BoC2 ECH4 WCA5,6 HSP	SO528386	2001	Present	present
Lesser Horseshoe Bat	<i>Rhinolophus hipposideros</i>	BC2 BoC2 ECH2,4 WCA5,6 UKB HSP	SO528387	2001	Present	present
Natterer's Bat	<i>Myotis nattereri</i>	BC2 BoC2 ECH4 WCA5,6 HSP	SO528387	2001	Present	present
Slow-Worm	<i>Anguis fragilis</i>	BC3 WCA5(S9(1) killing/injuring only, S9(5))	SO529383	2001	1	Adult
Slow-Worm	<i>Anguis fragilis</i>	BC3 WCA5(S9(1) killing/injuring only, S9(5))	SO529383	2001	present	Breeding confirmed
Lesser Horseshoe Bat	<i>Rhinolophus hipposideros</i>	BC2 BoC2 ECH2,4 WCA5,6 UKB HSP	SO529386	2001	Present	present

CE07 / 3249 / F

Herefordshire Biological Records Centre

Natterer's Bat	<i>Myotis nattereri</i>	BC2 BoC2 ECH4 WCA5,6 HSP	SO529386	2001	Present	present
Daubenton's Bat	<i>Myotis daubentoni</i>	BC3 BoC2 ECH4 HSP	SO530373	2001	Present	present
Badger	<i>Meles meles</i>	BC3 PBA WCA6	SO530374	2001	Present	present
Brown Long-Eared Bat	<i>Plecotus auritus</i>	BC2 BoC2 ECH4 WCA5,6 HSP	SO530374	2001	Present	present
Lesser Horseshoe Bat	<i>Rhinolophus hipposideros</i>	BC2 BoC2 ECH2,4 WCA5,6 UKB HSP	SO530374	2001	Present	present
Natterer's Bat	<i>Myotis nattereri</i>	BC2 BoC2 ECH4 WCA5,6 HSP	SO530374	2001	2	present
Mistletoe	<i>Viscum album</i>		SO530382	2001	Present	present
Lesser Horseshoe Bat	<i>Rhinolophus hipposideros</i>	BC2 BoC2 ECH2,4 WCA5,6 UKB HSP	SO530384	2001	Present	present
Badger	<i>Meles meles</i>	BC3 PBA WCA6	SO531374	2001	+	Burrow
Kingfisher	<i>Alcedo atthis</i>	BC2 ECB WCA1i	SO5338	2001	2	present
Badger	<i>Meles meles</i>	BC3 PBA WCA6	SO535380	2001	+	present
Bullfinch	<i>Pyrrhula pyrrhula</i>		SO535380	2001	+	probable breeding
House Sparrow	<i>Passer domesticus</i>		SO535380	2001	+	Breeding confirmed
Kestrel	<i>Falco tinnunculus</i>	BC2 BoC2 CITES2	SO535380	2001	+	possible breeding
Kingfisher	<i>Alcedo atthis</i>	BC2 ECB WCA1i	SO535380	2001	+	possible breeding
Marsh Tit	<i>Parus palustris</i>	BC2	SO535380	2001	+	probable breeding
Song Thrush	<i>Turdus philomelos</i>	UKB	SO535380	2001	+	probable breeding
Starling	<i>Sturnus vulgaris</i>		SO535380	2001	+	probable breeding
Kingfisher	<i>Alcedo atthis</i>	BC2 ECB WCA1i	SO535388	2001	2	present
Common Frog	<i>Rana temporaria</i>	BC3 WCA5(S9(5))	SO536380	2001	Present	present
Common Toad	<i>Bufo bufo</i>	BC3 WCA5(S9(5))	SO536380	2001	Present	present
Common Toad	<i>Bufo bufo</i>	BC3 WCA5(S9(5))	SO536380	2001	1	Adult
Common Toad	<i>Bufo bufo</i>	BC3 WCA5(S9(5))	SO536380	2001	100	Breeding confirmed
Common Frog	<i>Rana temporaria</i>	BC3 WCA5(S9(5))	SO537380	2001	1	Adult
Common Toad	<i>Bufo bufo</i>	BC3 WCA5(S9(5))	SO537380	2001	1	Adult
Black Poplar	<i>Populus nigra betulifolia</i>		SO538382	2001	Present	present
Mistletoe	<i>Viscum album</i>		SO538382	2001	occasional	present
Daubenton's Bat	<i>Myotis daubentoni</i>	BC3 BoC2 ECH4 HSP	SO540376	2001	1	present
Lesser Horseshoe Bat	<i>Rhinolophus hipposideros</i>	BC2 BoC2 ECH2,4 WCA5,6 UKB HSP	SO540376	2001	Present	present
Natterer's Bat	<i>Myotis nattereri</i>	BC2 BoC2 ECH4 WCA5,6 HSP	SO540376	2001	Present	present
Black Poplar	<i>Populus nigra betulifolia</i>		SO540379	2001	1	present

CE07/3249/F

Herefordshire Biological Records Centre

Mistletoe	<i>Viscum album</i>		SO541380	2001	abundant	present
Reed Bunting	<i>Emberiza schoeniclus</i>	BC2	SO5439	2001	1	male
Tree Sparrow	<i>Passer montanus</i>	HSP	SO513397	2000	Aprox 30	present
Song Thrush	<i>Turdus philomelos</i>	UKB	SO514395	2000	1	present
Song Thrush	<i>Turdus philomelos</i>	UKB	SO514395	2000	1	present
Song Thrush	<i>Turdus philomelos</i>	UKB	SO514395	2000	3	present
Song Thrush	<i>Turdus philomelos</i>	UKB	SO514395	2000	6	present
Song Thrush	<i>Turdus philomelos</i>	UKB	SO514395	2000	1	present
Spotted Flycatcher	<i>Muscicapa striata</i>	BC2 BoC2	SO514395	2000	2	present
Spotted Flycatcher	<i>Muscicapa striata</i>	BC2 BoC2	SO514395	2000	5	present
Spotted Flycatcher	<i>Muscicapa striata</i>	BC2 BoC2	SO514395	2000	4	present
Bullfinch	<i>Pyrrhula pyrrhula</i>		SO515375	2000	1	male
Song Thrush	<i>Turdus philomelos</i>	UKB	SO515375	2000	1	present
Song Thrush	<i>Turdus philomelos</i>	UKB	SO515375	2000	1	present
Song Thrush	<i>Turdus philomelos</i>	UKB	SO515375	2000	1	present
Song Thrush	<i>Turdus philomelos</i>	UKB	SO515375	2000	1	present
Song Thrush	<i>Turdus philomelos</i>	UKB	SO515375	2000	1	present
Song Thrush	<i>Turdus philomelos</i>	UKB	SO515375	2000	1	present
Song Thrush	<i>Turdus philomelos</i>	UKB	SO515375	2000	2	present
Song Thrush	<i>Turdus philomelos</i>	UKB	SO515375	2000	1	present
Song Thrush	<i>Turdus philomelos</i>	UKB	SO515375	2000	1	present
Song Thrush	<i>Turdus philomelos</i>	UKB	SO515375	2000	1	present
Song Thrush	<i>Turdus philomelos</i>	UKB	SO515375	2000	1	present
Song Thrush	<i>Turdus philomelos</i>	UKB	SO515375	2000	1	present
Song Thrush	<i>Turdus philomelos</i>	UKB	SO515375	2000	1	present
Song Thrush	<i>Turdus philomelos</i>	UKB	SO515375	2000	1	present
Song Thrush	<i>Turdus philomelos</i>	UKB	SO515375	2000	1	present
Song Thrush	<i>Turdus philomelos</i>	UKB	SO515375	2000	1	present
Spotted Flycatcher	<i>Muscicapa striata</i>	BC2 BoC2	SO515375	2000	2	present
Spotted Flycatcher	<i>Muscicapa striata</i>	BC2 BoC2	SO515375	2000	1	present
Spotted Flycatcher	<i>Muscicapa striata</i>	BC2 BoC2	SO515375	2000	1	present
Starling	<i>Sturnus vulgaris</i>		SO515375	2000	10	present
Starling	<i>Sturnus vulgaris</i>		SO515375	2000	4	present
Starling	<i>Sturnus vulgaris</i>		SO515375	2000	4	present
Starling	<i>Sturnus vulgaris</i>		SO515375	2000	3	present
Starling	<i>Sturnus vulgaris</i>		SO515375	2000	4	present
Starling	<i>Sturnus vulgaris</i>		SO515375	2000	c.100	present
Starling	<i>Sturnus vulgaris</i>		SO515375	2000	6	present
Starling	<i>Sturnus vulgaris</i>		SO515375	2000	15	present

CE07/3249/F

Herefordshire Biological Records Centre

Starling	<i>Sturnus vulgaris</i>		SO515375	2000	10 max	present
Starling	<i>Sturnus vulgaris</i>		SO515375	2000	4	present
Starling	<i>Sturnus vulgaris</i>		SO515375	2000	30 Max	present
Starling	<i>Sturnus vulgaris</i>		SO515375	2000	3 max	present
Daubenton's Bat	<i>Myotis daubentoni</i>	BC3 BoC2 ECH4 HSP	SO515386	2000	Present	in flight
Daubenton's Bat	<i>Myotis daubentoni</i>	BC3 BoC2 ECH4 HSP	SO515386	2000	Present	in flight
Reed Bunting	<i>Emberiza schoeniclus</i>	BC2	SO515387	2000	1	male
Spotted Flycatcher	<i>Muscicapa striata</i>	BC2 BoC2	SO515387	2000	1	present
Spotted Flycatcher	<i>Muscicapa striata</i>	BC2 BoC2	SO515387	2000	1	present
Spotted Flycatcher	<i>Muscicapa striata</i>	BC2 BoC2	SO515387	2000	1	present
Kestrel	<i>Falco tinnunculus</i>	BC2 BoC2 CITES2	SO515392	2000	1	present
Kestrel	<i>Falco tinnunculus</i>	BC2 BoC2 CITES2	SO515392	2000	1	present
Kestrel	<i>Falco tinnunculus</i>	BC2 BoC2 CITES2	SO515392	2000	1	present
Kestrel	<i>Falco tinnunculus</i>	BC2 BoC2 CITES2	SO515392	2000	1	present
Kestrel	<i>Falco tinnunculus</i>	BC2 BoC2 CITES2	SO515392	2000	1	present
Song Thrush	<i>Turdus philomelos</i>	UKB	SO515392	2000	1	present
Daubenton's Bat	<i>Myotis daubentoni</i>	BC3 BoC2 ECH4 HSP	SO519384	2000	10	in flight
Daubenton's Bat	<i>Myotis daubentoni</i>	BC3 BoC2 ECH4 HSP	SO519384	2000	3	in flight
Common Frog	<i>Rana temporaria</i>	BC3 WCA5(S9(5))	SO520405	2000	01-Nov	Adult
Common Toad	<i>Bufo bufo</i>	BC3 WCA5(S9(5))	SO520405	2000	10	Adult
Smooth Newt	<i>Triturus vulgaris</i>	BC3 WCA5(S9(5))	SO520405	2000	01-Sep	Adult
Otter	<i>Lutra lutra</i>	BC2 ECH2,4 CITES1 WCA5,6 UKB	SO522392	2000	1	present
Common Frog	<i>Rana temporaria</i>	BC3 WCA5(S9(5))	SO523408	2000	3	larva
Great Crested Newt	<i>Triturus cristatus</i>	BC2 ECH2,4 WCA5 UKB	SO523408	2000	5	adult
Great Crested Newt	<i>Triturus cristatus</i>	BC2 ECH2,4 WCA5 UKB	SO523408	2000	17	adult
Smooth Newt	<i>Triturus vulgaris</i>	BC3 WCA5(S9(5))	SO523408	2000	14	adult
Starling	<i>Sturnus vulgaris</i>		SO525397	2000	21	present
Starling	<i>Sturnus vulgaris</i>		SO525397	2000	c.100	present
Common Frog	<i>Rana temporaria</i>	BC3 WCA5(S9(5))	SO527398	2000	1000	larva
Smooth Newt	<i>Triturus vulgaris</i>	BC3 WCA5(S9(5))	SO527398	2000	3	adult
Common Frog	<i>Rana temporaria</i>	BC3 WCA5(S9(5))	SO527399	2000	1000	larva
Common Frog	<i>Rana temporaria</i>	BC3 WCA5(S9(5))	SO527399	2000	Present	egg/ovum
Common Frog	<i>Rana temporaria</i>	BC3 WCA5(S9(5))	SO527400	2000	1000	larva
Common Frog	<i>Rana temporaria</i>	BC3 WCA5(S9(5))	SO527400	2000	Present	egg/ovum
Great Crested Newt	<i>Triturus cristatus</i>	BC2 ECH2,4 WCA5 UKB	SO527400	2000	17	egg/ovum
Great Crested Newt	<i>Triturus cristatus</i>	BC2 ECH2,4 WCA5 UKB	SO527400	2000	3	adult
Great Crested Newt	<i>Triturus cristatus</i>	BC2 ECH2,4 WCA5 UKB	SO527400	2000	54	larva
Smooth Newt	<i>Triturus vulgaris</i>	BC3 WCA5(S9(5))	SO527400	2000	11	adult
Smooth Newt	<i>Triturus vulgaris</i>	BC3 WCA5(S9(5))	SO527400	2000	4	adult

CE07 / 3249 / F

Herefordshire Biological Records Centre

Smooth Newt	<i>Triturus vulgaris</i>	BC3 WCA5(S9(5))	SO527400	2000	47	larva
Starling	<i>Sturnus vulgaris</i>		SO528398	2000	70	present
Badger	<i>Meles meles</i>	BC3 PBA WCA6	SO529391	2000	1	present
Lesser Horseshoe Bat	<i>Rhinolophus hipposideros</i>	BC2 BoC2 ECH2,4 WCA5,6 UKB HSP	SO530380	2000	1	roosting
Lesser Horseshoe Bat	<i>Rhinolophus hipposideros</i>	BC2 BoC2 ECH2,4 WCA5,6 UKB HSP	SO530380	2000	1	roosting
Chiroptera	<i>Chiroptera</i>	BC3 BoC2 ECH4 HSP	SO531395	2000	Present	present
Linnet	<i>Carduelis cannabina</i>	BC2	SO5339	2000	7	present
Reed Bunting	<i>Emberiza schoeniclus</i>	BC2	SO5339	2000	1	male
Peregrine	<i>Falco peregrinus</i>	BC2 BoC2 CITES1 ECB WCA1i	SO539405	2000	1	present
Reed Bunting	<i>Emberiza schoeniclus</i>	BC2	SO539405	2000	Present	present
Reed Bunting	<i>Emberiza schoeniclus</i>	BC2	SO539405	2000	Present	present
Skylark	<i>Alauda arvensis</i>	UKB	SO539405	2000	6	present
Starling	<i>Sturnus vulgaris</i>		SO539405	2000	12	present
Starling	<i>Sturnus vulgaris</i>		SO539405	2000	4	present
Starling	<i>Sturnus vulgaris</i>		SO539405	2000	3	present
Kestrel	<i>Falco tinnunculus</i>	BC2 BoC2 CITES2	SO5439	2000	1	present
Kestrel	<i>Falco tinnunculus</i>	BC2 BoC2 CITES2	SO5439	2000	1	present
Kestrel	<i>Falco tinnunculus</i>	BC2 BoC2 CITES2	SO5439	2000	2	present
Kestrel	<i>Falco tinnunculus</i>	BC2 BoC2 CITES2	SO5439	2000	1	present
Kestrel	<i>Falco tinnunculus</i>	BC2 BoC2 CITES2	SO5439	2000	1	present
Kestrel	<i>Falco tinnunculus</i>	BC2 BoC2 CITES2	SO5439	2000	1	present
Peregrine	<i>Falco peregrinus</i>	BC2 BoC2 CITES1 ECB WCA1i	SO5439	2000	1	present
Peregrine	<i>Falco peregrinus</i>	BC2 BoC2 CITES1 ECB WCA1i	SO5439	2000	1	present
Reed Bunting	<i>Emberiza schoeniclus</i>	BC2	SO5439	2000	1 adult	male
Skylark	<i>Alauda arvensis</i>	UKB	SO5439	2000	c.29	present
Skylark	<i>Alauda arvensis</i>	UKB	SO5439	2000	c.23	present
Skylark	<i>Alauda arvensis</i>	UKB	SO5439	2000	20	present
Skylark	<i>Alauda arvensis</i>	UKB	SO5439	2000	18	present
Skylark	<i>Alauda arvensis</i>	UKB	SO5439	2000	c.15	present
Skylark	<i>Alauda arvensis</i>	UKB	SO5439	2000	10	present
Song Thrush	<i>Turdus philomelos</i>	UKB	SO5439	2000	1	present
Song Thrush	<i>Turdus philomelos</i>	UKB	SO5439	2000	1	present
Starling	<i>Sturnus vulgaris</i>		SO5439	2000	3	present
Starling	<i>Sturnus vulgaris</i>		SO5439	2000	2	present
Starling	<i>Sturnus vulgaris</i>		SO5439	2000	30	present
Yellowhammer	<i>Emberiza citrinella</i>	BC2	SO5439	2000	1	present
Yellowhammer	<i>Emberiza citrinella</i>	BC2	SO5439	2000	1	present
Yellowhammer	<i>Emberiza citrinella</i>	BC2	SO5439	2000	1	present
Yellowhammer	<i>Emberiza citrinella</i>	BC2	SO5439	2000	2	present

CE07/3249/F

Herefordshire Biological Records Centre

Yellowhammer	<i>Emberiza citrinella</i>	BC2	SO5439	2000	1	present
Lesser Horseshoe Bat	<i>Rhinolophus hipposideros</i>	BC2 BoC2 ECH2,4 WCA5,6 UKB HSP	SO530380	1999	1	roosting
Chiroptera	<i>Chiroptera</i>	BC3 BoC2 ECH4 HSP	SO532377	1999	Present	present
Slow-Worm	<i>Anguis fragilis</i>	BC3 WCA5(S9(1) killing/injuring only, S9(5))	SO535403	1999	5	Adult
Slow-Worm	<i>Anguis fragilis</i>	BC3 WCA5(S9(1) killing/injuring only, S9(5))	SO538394	1999	1	Adult
Bluebell	<i>Hyacinthoides non-scripta</i>	WCA8(S13(2))	SO5140	1998	present	Present
Daffodil	<i>Narcissus pseudonarcissus</i>		SO5140	1998	present	Present
	<i>pseudonarcissus</i>					
Common Frog	<i>Rana temporaria</i>	BC3 WCA5(S9(5))	SO520405	1998	1	egg/ovum
Brown Long-Eared Bat	<i>Plecotus auritus</i>	BC2 BoC2 ECH4 WCA5,6 HSP	SO524410	1998	1	male
Daubenton's Bat	<i>Myotis daubentoni</i>	BC3 BoC2 ECH4 HSP	SO515386	1997	Present	in flight
Daubenton's Bat	<i>Myotis daubentoni</i>	BC3 BoC2 ECH4 HSP	SO515386	1997	Present	in flight
Great Crested Newt	<i>Triturus cristatus</i>	BC2 ECH2,4 WCA5 UKB	SO526399	1997	1	female
Smooth Newt	<i>Triturus vulgaris</i>	BC3 WCA5(S9(5))	SO526399	1997	2	male
Black Poplar	<i>Populus nigra betulifolia</i>		SO538395	1996	Present	present
Chiroptera	<i>Chiroptera</i>	BC3 BoC2 ECH4 HSP	SO537393	1994	Present	present
Badger	<i>Meles meles</i>	BC3 PBA WCA6	SO528391	1993	Present	present
Kingfisher	<i>Alcedo atthis</i>	BC2 ECB WCA1i	SO528391	1993	Present	present
Lesser Spotted Woodpecker	<i>Dendrocopos minor</i>	BC2	SO528391	1993	Present	present
Badger	<i>Meles meles</i>	BC3 PBA WCA6	SO529391	1993	Present	present
Badger	<i>Meles meles</i>	BC3 PBA WCA6	SO529391	1993	Present	present
Daffodil	<i>Narcissus pseudonarcissus</i>		SO529391	1993	Present	present
	<i>pseudonarcissus</i>					
Daffodil	<i>Narcissus pseudonarcissus</i>		SO529391	1993	Present	present
	<i>pseudonarcissus</i>					
Kingfisher	<i>Alcedo atthis</i>	BC2 ECB WCA1i	SO529391	1993	Present	present
Kingfisher	<i>Alcedo atthis</i>	BC2 ECB WCA1i	SO529391	1993	Present	present
Lesser Spotted Woodpecker	<i>Dendrocopos minor</i>	BC2	SO529391	1993	Present	present
Lesser Spotted Woodpecker	<i>Dendrocopos minor</i>	BC2	SO529391	1993	Present	present
Chiroptera	<i>Chiroptera</i>	BC3 BoC2 ECH4 HSP	SO530394	1993	Present	present
Badger	<i>Meles meles</i>	BC3 PBA WCA6	SO539396	1993	Present	present
Brown Hare	<i>Lepus capensis</i>	BC3 UKB	SO539396	1993	Present	present
Polecat	<i>Mustela putorius</i>	BC3 ECH5 WCA6 HSP	SO543388	1992	1	female
Pipistrelle	<i>Pipistrellus pipistrellus</i>	BC2 BoC2 ECH4 WCA5,6 UKB	SO516384	1991	20	adult
Pipistrelle	<i>Pipistrellus pipistrellus</i>	BC2 BoC2 ECH4 WCA5,6 UKB	SO516384	1991	40	juvenile
Pipistrelle	<i>Pipistrellus pipistrellus</i>	BC2 BoC2 ECH4 WCA5,6 UKB	SO516384	1991	60	roosting
Unidentified Bat	<i>Myotis</i>	BC2 BoC2 ECH4	SO523392	1990	Present	present
Chiroptera	<i>Chiroptera</i>	BC3 BoC2 ECH4 HSP	SO5238	1990	Present	present
Xyletinus longitarsis	<i>Xyletinus longitarsis</i>		SO5340	1990	Jun-20	adult

CE07/3249/F

Herefordshire Biological Records Centre

Bluebell	<i>Hyacinthoides non-scripta</i>	WCA8(S13(2))	SO53E	1990	Present	present
Mistletoe	<i>Viscum album</i>		SO53E	1990	Present	present
Mistletoe	<i>Viscum album</i>		SO53J	1990	Present	present
Chiroptera	<i>Chiroptera</i>	BC3 BoC2 ECH4 HSP	SO540376	1990	Present	present
Lesser Horseshoe Bat	<i>Rhinolophus hipposideros</i>	BC2 BoC2 ECH2,4 WCA5,6 UKB HSP	SO540376	1990	2	present
Black Poplar	<i>Populus nigra betulifolia</i>		SO54F	1990	Present	present
Mistletoe	<i>Viscum album</i>		SO54F	1990	Present	present
Chiroptera	<i>Chiroptera</i>	BC3 BoC2 ECH4 HSP	SO526394	1989	Present	present
Stonefly	<i>Brachyptera putata</i>		SO526404	1989	Present	female
Xyletinus longitarsis	<i>Xyletinus longitarsis</i>		SO5340	1989	21-100	adult
Mistletoe	<i>Viscum album</i>		SO5438	1989	Present	present
Chiroptera	<i>Chiroptera</i>	BC3 BoC2 ECH4 HSP	SO532403	1988	Present	present
Daubenton's Bat	<i>Myotis daubentoni</i>	BC3 BoC2 ECH4 HSP	SO5138	1987	Present	present
Pipistrelle	<i>Pipistrellus pipistrellus</i>	BC2 BoC2 ECH4 WCA5,6 UKB	SO5138	1987	Present	present
Unidentified Bat	<i>Myotis</i>	BC2 BoC2 ECH4	SO508389	1985	50-60	roosting
Chiroptera	<i>Chiroptera</i>	BC3 BoC2 ECH4 HSP	SO512398	1985	Present	present
Hydroptila lotensis	<i>Hydroptila lotensis</i>		SO5139	1984	1	female
Hydroptila lotensis	<i>Hydroptila lotensis</i>		SO5139	1984	2	male
Pipistrelle	<i>Pipistrellus pipistrellus</i>	BC2 BoC2 ECH4 WCA5,6 UKB	SO516384	1984	Present	present
Stonefly	<i>Brachyptera putata</i>		SO529391	1984	Present	female
Hydroptila lotensis	<i>Hydroptila lotensis</i>		SO5239	1983	Present	present
Hydroptila lotensis	<i>Hydroptila lotensis</i>		SO529391	1983	Present	adult
Stonefly	<i>Brachyptera putata</i>		SO529391	1983	Present	female
Water Shrew	<i>Neomys fodiens</i>	BC3 WCA6	SO5438	1981	Present	present
Common Toad	<i>Bufo bufo</i>	BC3 WCA5(S9(5))	SO529391	1980	Present	present
Badger	<i>Meles meles</i>	BC3 PBA WCA6	SO535375	1977	Present	present
Bluebell	<i>Hyacinthoides non-scripta</i>	WCA8(S13(2))	SO535375	1977	Present	present
Water Vole	<i>Arvicola terrestris</i>	WCA5(S9(4a, 4b)) UKB HSP	SO5239	1976	Present	present
Water Vole	<i>Arvicola terrestris</i>	WCA5(S9(4a, 4b)) UKB HSP	SO5239	1974	Present	present
Slow-Worm	<i>Anguis fragilis</i>	BC3 WCA5(S9(1) killing/injuring only, S9(5))	SO529391	1974	Present	present
Deptford Pink	<i>Dianthus armeria</i>	WCA8 (England & Wales only)	SO5339	1889	Present	present
Mole Cricket	<i>Gryllotalpa gryllotalpa</i>	WCA5	SO5139	1863	Present	present

CE07/3249/F

COUNTY: HEREFORD AND WORCESTER/POWYS

SITE NAME: RIVER
LUGG/AFON LLUGWY

SITE REF: 15 PGL

Status: Site of Special Scientific Interest (SSSI) notified under Section 28 of the Wildlife and Countryside Act 1981 as amended

Local Planning Authorities: HEREFORD AND WORCESTER COUNTY COUNCIL,
Leominster District Council, Hereford City Council, South Herefordshire District Council,
Powys County Council, Radnorshire District Council

National Grid References: SO 173751-SO 565372

Length (approximate)	Area (approximate)
English Length: 74.17 (km.)	English Area: 210.05 (ha.)
Welsh Length: 26.90 (km.)	Welsh Area: 26.90 (ha.)
Total Length: 101.07 (km.)	Total Area: 236.95 (ha.)

Ordnance Survey Sheets:

1:50,000: 148, 149

1:10,000: SO 17 NE, SE, SO 26 NE, NW, SO 27 SW, SO 36 NW, NE, SE, SW,
SO 46 NW, SW, SE, SO 45 NE, SO 53 NE, SO 54 NW, SE, SW,
SO 55 NW, SW

Date Notified (Under 1981 Act): 2 February 1995

Other Information:

This is a new site.

The site interest includes the following species covered by Council Directive 92/43/EEC on the conservation of natural habitats and of wild flora and fauna:

Atlantic Stream Crayfish *Austropotamobius pallipes* – Annex IICommon Otter *Lutra lutra* – Annex II and IVAtlantic Salmon *Salmo salar* – Annex IVBullhead *Cottus gobio* – Annex IVTwaiite Shad *Alosa fallax* – Annex II

Atlantic Stream Crayfish and Common Otter are also listed in Schedule 5 of the Wildlife and Countryside Act 1981 as amended.

The site overlaps with the River Lugg Meanders SSSI selected under the Geological Conservation Review.

Flora

The headwaters on Pool Hill are characterised by a range of aquatic and semi-aquatic bryophytes including the golden-brown moss *Cratoneuron commutatum* in stony flushes and *Cinclidotus fontinaloides* on streamside rocks.There are a few higher plants present, especially in the peaty pools near to the river's source where intermediate water-starwort *Callitriche hamulata*, water-purslane *Lythrum portula* and round-leaved crowfoot *Ranunculus omiophyllus* can be found. The large pool at the source supports the nationally scarce pillwort *Pilularia globulifera*.The river banks and surrounds in the headwaters support a range of semi-natural vegetation including heather moorland, dry calcareous grassland, base-rich flushes typically with small sedges and brown mosses and damp pasture. The latter is characterised by purple moor-grass *Molinia caerulea*, quaking grass *Briza media*, sharp-flowered rush *Juncus acutiflorus*, devil's-bit scabious *Succisa pratensis*, Marsh valerian *Valeriana dioica* and rusty willow *Salix cinerea* subsp. *oleifolia* scrub with a rich ground flora that includes water avens *Geum rivale*.

In the upper Lugg there is little vegetation where the flow is greatest and the bed is unstable. Characteristic plants include encrusting and filamentous algae, the liverworts *Pellia epiphylla* and *Solenostoma triste* and the moss *Rhynchostegium riparioides*. The species diversity for such small, shaded, sandstone streams is typically poor with lower plants constituting over one-third of plant species present. The only truly aquatic higher plants of this community are branched bur-reed *Sparganium erectum*, which grows in silt at the channel edge, and brook water-crowfoot *Ranunculus penicillatus* subsp. *pseudofluitans* on riffles.

Most of the middle and lower reaches have species-rich, calcareous, lowland river communities due to the downstream influence of the drainage from the Silurian mudstones, siltstones and limestones. In the middle reaches from Leominster to the Vern Railway bridge the transitional nature of the river is shown by the lowland species, typical of a clay bedded channel, growing alongside water crowfoots and a variety of bryophytes requiring coarser substrates. Below the confluence with the Arrow, the dominant higher plant of the upper river – brook water-crowfoot – gradually gives way to extensive beds of river water-crowfoot *Ranunculus fluitans*, a species largely confined to rivers with a large flow volume. There is an increasingly eutrophic influence downstream with spiked water-milfoil *Myriophyllum spicatum*, horned pondweed *Zannichellia palustris* and the green algae *Cladophora glomerata* and *Enteromorpha* frequent. Marginal vegetation is sparse with only branched bur-reed and reed canary-grass *Phalaris arundinacea* commonly present.

In the lower reaches of the Lugg the vegetation assemblages are increasingly characteristic of southern clay rivers but retain the influence of coarse substrates. Upstream of weirs and where the flow is sluggish, several species occur which are typical of slow moving, soft bottomed rivers, for example yellow water-lily *Nuphar lutea*, unbranched bur-reed *Sparganium emersum* and common club-rush *Scirpus lacustris*. The nutrient-rich nature of the lowermost reaches is shown by the appearance of fennel pondweed *Potamogeton pectinatus*, perfoliate pondweed *P. perfoliatus* and arrowhead *Sagittaria sagittifolia*. Along the river's edge, great yellow-cress *Rorippa amphibia* and flowering rush *Butomus umbellatus* occur, at or near to their western limit of distribution.

Parts of the site within Wales at Pool Hill and within England at Presteigne are managed by the Radnorshire Wildlife Trust as the Beacon Hill and Withybeds nature reserves, respectively.

The Welsh section of the river lies within the Radnor Environmentally Sensitive Area (ESA).

Description and Reasons for Notification:

From its upland source in Powys in mid-Wales to its confluence with the Wye below Hereford in England, the River Lugg is considered to be one of the best British mainland examples of both a clay river and a river displaying a transition from nutrient-poor to naturally nutrient-rich water chemistry. Despite being canalised in some small sections of its 101 km length and running through an intensively farmed catchment in its middle and lower reaches, it is a largely unpolluted natural river and supports river plant communities and otter populations of special interest.

The Lugg rises at 500 m on Pool Hill in Powys and descends rapidly to flow through a more gentle landscape and eventually onto a broad alluvial floodplain joining the River Wye. It runs for most of its length through pasture with some areas of arable. Only around its source and at the Lugg Meadow SSSI does adjoining semi-natural vegetation constitute significant land cover. The river is tree lined for most of its length, alder *Alnus glutinosa* and willows *Salix* spp. being the main species. The SSSI boundary incorporates short stretches of adjacent wet woodland and includes all fringing tree lines. The channel itself is quite active, especially in the upper and middle reaches, with migrating meanders which deposit shingle banks and cut vertical bank faces up to 3 m high. Through its long history

of use the river also has several mill leats and flood flow channels, the most notable of the latter being the Kenwater through Leominster. These stretches complement the biological interest found in the main channel and have been included in the site, even though they have extensive bank protection or canalised sections.

Geology and Topography

Near to its source the infant river drains an upland area based on Silurian mudstones and siltstones, where the bedrock geology is the dominant influence on channel form. Numerous peaty flushes and small springs on the valley sides feed the headwaters and combine to cut a steep-sided and rock-bottomed section, descending over 200 m in the first 3 km. The Lugg's upper catchment is underlain by these same Silurian rocks and the river adopts a typically high-energy erosive character.

From the border with England, the underlying rocks are predominantly non-calcareous and are principally Old Red Sandstone of Devonian age on the valley sides, with some limestone outcropping at the Aymestry Gorge. Changes in bedrock and river gradient are reflected in the channel substrate. Along the stretch from the border to Leominster the average flow is quite fast, with a well developed pool and riffle system and a river bed predominantly of cobbles, pebbles and gravels. From Kingsland and particularly below the confluence with the River Arrow, the river meanders across an alluvial plain. These lower reaches are characterised by deeper water and slower flows and the river is clay bedded with silt deposits.

Such variations in geology, flow and substrate have given rise to an interesting downstream variation in river plant communities, ranging from naturally species-poor communities of upland channels prone to spate, to those representative of mature lowland rivers. These types combine in the Lugg's lower reaches to produce a plant assemblage of unusual occurrence in England.

The high naturalness and diversity of the aquatic communities is demonstrated by the occurrence of the pollution intolerant red algae, *Lemanea fluviatilis* and *Hildenbrandia rivularis* along the entire course of the Lugg and the presence of a total of 121 river plant species.

Mammals

Field signs of common otter *Lutra lutra* are numerous and widespread along the length of the river and indicate a healthy population. It is one of the few rivers in central England that retained a strong population during the widespread decline of the 1980s. The Lugg, therefore, is considered a core refuge area for otters and has played a key role in the species recolonisation of the River Wye catchment.

Invertebrates

Extensive populations of the native atlantic stream crayfish *Austropotomobius pallipes* are present, a species which is in decline across Europe. Limited sampling to date has identified a variety of rare and scarce invertebrates from the lower Lugg, including the nationally rare pea mussel *Pisidium tenuilineatum*, a species requiring unpolluted conditions. The nationally scarce species present include two aquatic beetles *Riolus cupreus* and *R. subviolaceus* which live on stones in flowing water, and the alderfly *Sialis nigripes*, a species with an aquatic larva living in silts in large river systems. A range of mayflies *Ephemeroptera* including species with localised distributions are also recorded. The common hawker *Aeshna juncea* is common along the headwaters of the river.

The change in river bed substrate and flow rate can be mapped by the distribution of two damselflies, the banded demoiselle *Calopteryx splendens* and the beautiful demoiselle *C. virgo*. The latter is present above and around Leominster but is replaced by the banded demoiselle down to the confluence with the Wye.

Fisheries

Though not of special interest, the fish community has many natural characteristics and contributes to the nature conservation value of the river. The Lugg upstream of Leominster is predominantly a brown trout *Salmo trutta* fishery with some grayling *Thymallus thymallus* present. Few coarse fish are found above Aymestry which marks the upper limit of atlantic salmon *Salmo salar* migration. Coarse fish including chub *Leuciscus cephalus*, roach *Rutilus rutilus*, pike *Esox lucius*, twaite shad *Alosa fallax*, eels *Anguilla anguilla* and barbel *Barbus barbus* become more plentiful downstream of Leominster. Stoneloach *Noemacheilus barbatulus*, minnows *Phoxinus phoxinus* and bullheads *Cottus gobio* are present throughout the river.

Breeding Birds

The River Lugg provides good habitat for a range of typical river birds. Dipper *Cinclus cinclus* is found on the upper reaches, with kingfisher *Alcedo atthis* occurring more on the middle and lower stretches. Grey wagtail *Motacilla cinerea* occur throughout. Several pairs of mute swan *Cygnus olor* and common sandpiper *Actitis hypoleucos* also breed on the river, as do mallards *Anas platyrhynchos* which are plentiful. Some active cutting faces of the meanders hold colonies of sand martins *Riparia riparia*.

COUNTY: HEREFORD & WORCESTER

SITE NAME: LUGG MEADOWS

DISTRICT: SOUTH HEREFORD

Status: Site of Special Scientific Interest (SSSI) notified under Section 28 of the Wildlife and, Countryside Act 1981

Local Planning Authority: HEREFORD & WORCESTER COUNTY COUNCIL, South Hereford District Council

National Grid Reference: SO 531411

Area: 15.62 (ha.) 38.6 (ac.)

Ordnance Survey Sheet 1:50,000: 149

1:10,000: SO 54 SW

Date Notified (Under 1949 Act): 1969

Date of Last Revision: 1975

Date Notified (Under 1981 Act): 1984

Date of Last Revision: -

Other Information:
Common land.

Reasons for Notification:

This site is part of the Lugg Meadows Commons complex which lie to the east of the City of Hereford in the alluvial valley of the River Lugg.

This part of the complex has been managed since historic times as a hay meadow with aftermath grazing. This form of management, produces a characteristic flora. The Lugg Meadows represent one of the few examples of this type of meadow surviving in this part of Britain.

The meadows are dominated by grasses such as meadow foxtail *Alopecurus pratensis* sweet vernal grass *Anthoxanthum odoratum*, soft brome *Bromus mollis*, red fescue *Festuca rubra* and crested dog's-tail *Cynosurus cristatus*.

The herbaceous flora includes plants such as yarrow *Achillea millefolium*, pepper saxifrage *Silaum silaus* and hawkbits *Leontodon hispidus* and *L. autumnalis*. In the wetter parts of the site species such as ladies smock *Cardamine pratensis*, the water dropworts *Oenanthe fistulosa* and *O. silaifolia* and the marsh marigold *Caltha palustris* occur.

The most notable plant of the meadows is the snakeshead fritillary *Fritillaria meleagris*. This is the only recorded site for this plant surviving in this part of Britain.

During the winter months flooding often occurs in the meadows. This flooding attracts considerable numbers of birds, including such species as Bewick Swan *Cygnus columbianus* and Whooper Swan *Cygnus cygnus* on passage to their traditional overwintering grounds.


[sitemap](#) | [legal](#)

Search for an SAC

Search

Search

Menu

[News](#) | [Jobs](#) | [Publications](#) | [About JNCC](#) | [Accessibility](#) | [Contacts](#)

UK SAC summary

UK SAC site list

England site list

Northern Ireland

Scotland

Wales

SAC selection

Summary

Background to site selection

Latest changes to the UK SAC list

Annex I Habitat accounts

Annex II Species accounts

Browse cSACs on a map

Notes on nomenclature

Search for a SAC

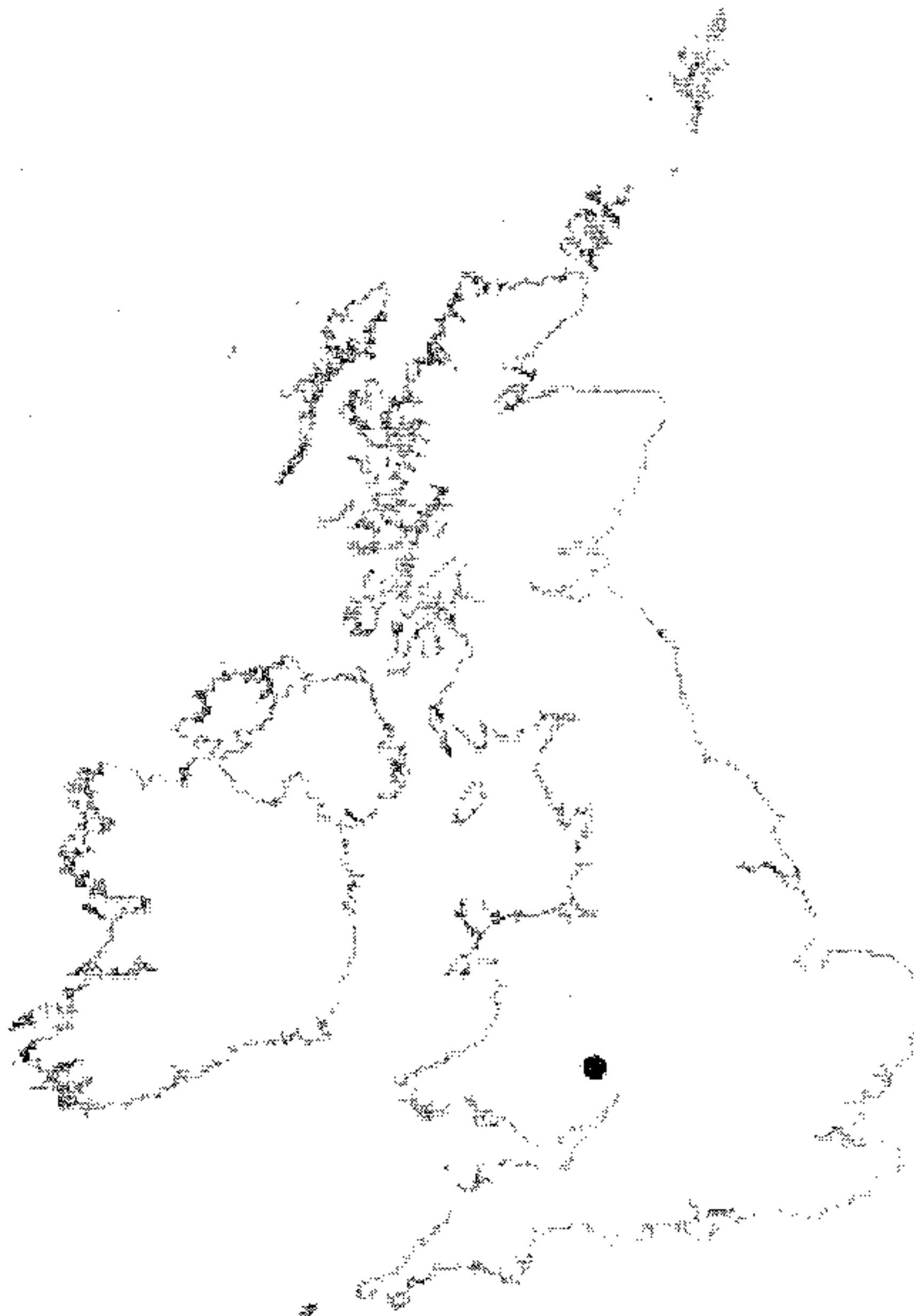
Other designations on UK SACs

cSACs in NI which adjoin
cSACs in the RoIAnnex I habitats and Annex II
species occurring in the UK

Abbreviations and acronyms

River Wye/ Afon Gwy

Site details



Location of River Wye/ Afon Gwy SAC/SCI/cSAC

Country	England/Wales
Unitary Authority	Fynwy/ Monmouthshire; Gloucestershire; Herefordshire; Powys
Grid Ref*	SO109369
Latitude	52 01 24 N
Longitude	03 17 59 W

Acknowledgements

References

Download spatial and summary data

Download GIS data

Marine SACs

SAC EU code UK0012642

Status Designated Special Area of Conservation (SAC)

Area (ha) 2234.89

* This is the approximate central point of the SAC. In the case of large, linear or composite sites, this may not represent the location where a feature occurs within the SAC.

General site character

Tidal rivers. Estuaries. Mud flats. Sand flats. Lagoons (including saltwork basins) (9.5%)
 Salt marshes. Salt pastures. Salt steppes (1.5%)
 Inland water bodies (standing water, running water) (52.5%)
 Bogs. Marshes. Water fringed vegetation. Fens (3.1%)
 Heath. Scrub. Maquis and garrigue. Phygrana (1%)
 Dry grassland. Steppes (5.3%)
 Humid grassland. Mesophile grassland (2.4%)
 Improved grassland (10.4%)
 Broad-leaved deciduous woodland (12.3%)
 Inland rocks. Scree. Sands. Permanent snow and ice (0.2%)
 Other land (including towns, villages, roads, waste places, mines, industrial sites) (1.8%)

[Boundary map](#) and associated biodiversity information on the NBN Gateway.

[Natura 2000 data form](#) for this site as submitted to Europe (PDF format, size 30kb).

Annex I habitats that are a primary reason for selection of this site

3260 Water courses of plain to montane levels with the *Ranunculus fluitantis* and *Callitriche-Batrachion* vegetation

The Wye, on the border of England and Wales, is a large river representative of sub-type 2. It has a geologically mixed catchment, including shales and sandstones, and there is a clear transition between the upland reaches, with characteristic bryophyte-dominated vegetation, and the lower reaches, with extensive *Ranunculus* beds. There is a varied water-crowfoot *Ranunculus* flora; stream water-crowfoot *R. penicillatus* ssp. *pseudofluitans* is abundant, with other *Ranunculus* species – including the uncommon river water-crowfoot *R. fluitans* – found locally. Other species characteristic of sub-type 2 include flowering-rush *Butomus umbellatus*, lesser water-parsnip *Berula erecta* and curled pondweed *Potamogeton crispus*. There is an exceptional range of aquatic flora in the catchment including river jelly-lichen *Collema dichotum*. The river channel is largely unmodified and includes some excellent gorges, as well as significant areas of associated woodland.

Annex I habitats present as a qualifying feature, but not a primary reason for selection of this site

7140 Transition mires and quaking bogs

Annex II species that are a primary reason for selection of this site

1092 White-clawed (or Atlantic stream) crayfish *Austropotamobius pallipes*

The Welsh River Wye system is the best site known in Wales for **white-clawed crayfish *Austropotamobius pallipes***. The tributaries are the main haven for the species, particularly at the confluences of the main river and the Edw, Dulas Brook, Sgithwen and Clettwr Brook.

1095 Sea lamprey *Petromyzon marinus*

The Wye is an extensive river system crossing the border between England and Wales and the **sea lamprey *Petromyzon marinus*** population is found in the main stem below Llyswen. The site provides exceptionally good quality habitat for sea lamprey and supports a healthy population.

1096 Brook lamprey *Lampetra planeri*

The Wye is an extensive river system spanning the border between England and Wales and the **brook lamprey *Lampetra planeri*** population is widely distributed in its catchment. The river provides exceptionally good quality habitat for brook lamprey and supports a healthy population.

1099 River lamprey *Lampetra fluviatilis*

The Wye is an extensive river system crossing the border between England and Wales, and the **river lamprey *Lampetra fluviatilis*** population is widely distributed in the catchment. The Wye provides exceptionally good quality habitat for river lamprey and supports a healthy population.

1103 Twaite shad *Alosa fallax*

Twaite shad *Alosa fallax* have long been abundant in the Wye, an extensive river system spanning the border between England and Wales. Twaite shad often spawn at or just above the tidal limit, but in the Wye they migrate over 100 km upstream, the highest spawning site being at Builth Wells. Data held by the Environment Agency indicate that, of the three selected rivers, the largest spawning areas for this species occur on the Wye. The river has relatively good water quality, adequate flows through an unobstructed main channel and a wide range of aquatic habitats conducive to supporting this fish species. In particular, there are a number of deep pools essential for congregation before spawning.

1106 Atlantic salmon *Salmo salar*

Historically, the Wye is the most famous and productive river in Wales for **Atlantic salmon *Salmo salar***, with high-quality spawning grounds and juvenile habitat in both the main channel and tributaries; water quality in the system is generally favourable. It is also one of the most diverse river systems in the UK, with a transition from hard geology, high gradients, rapid flow fluctuations and low nutrient-content in its upper reaches, to a more nutrient-rich river with lower gradient, more stable flow and softer geology in the lowlands. The effect of river engineering work on migration and spawning has been limited, although there is a localised influence from the Elan Valley reservoirs, through inundation of spawning and nursery habitat and fluctuations in flow and water levels in the upper Wye. The most important tributaries for spawning are included in the SAC. Although in the past non-native salmon may have been released to the system, the impact of this is likely to have been minimal. The Wye salmon population is particularly notable for the very high proportion (around 75%) of multi sea winter (MSW) fish, a stock component which has declined sharply in recent years throughout the UK. This pattern has also occurred in the Wye, with a consequent marked decline in the population since the 1980s. However, the Wye salmon population is still of considerable importance in UK terms.

1163 Bullhead *Cottus gobio*

The Wye represents **bullhead *Cottus gobio*** in an extensive river system crossing the border between England and Wales. The Wye is one of the most diverse river systems in the UK, with a range of nutrient conditions and aquatic habitats and generally good water quality for fish species. The diversity of habitat types in the Wye means that it is likely to represent most of the habitat conditions in which bullhead occurs in Britain, highlighting the conservation importance of this river.

1355 Otter *Lutra lutra*

The Wye holds the densest and most well-established **otter *Lutra lutra*** population in Wales, representative of otters occurring in lowland freshwater habitats in the borders of Wales. The river has bank-side vegetation cover, abundant food supply, clean water and undisturbed areas of dense scrub suitable for breeding, making it particularly favourable as otter habitat. The population remained even during the lowest point of the UK decline, confirming that the site is particularly favourable for this species and the population likely to be highly stable.

Annex II species present as a qualifying feature, but not a primary reason for site selection

1102 Allis shad *Alosa alosa*

Many designated sites are on private land: the listing of a site in these pages does not imply any right of public access.

CE07 / 3249 / F

Betts Estates

Nature Conservation Management Plan

Nature Conservation Management Plan

BADGERS AND DISTURBANCE

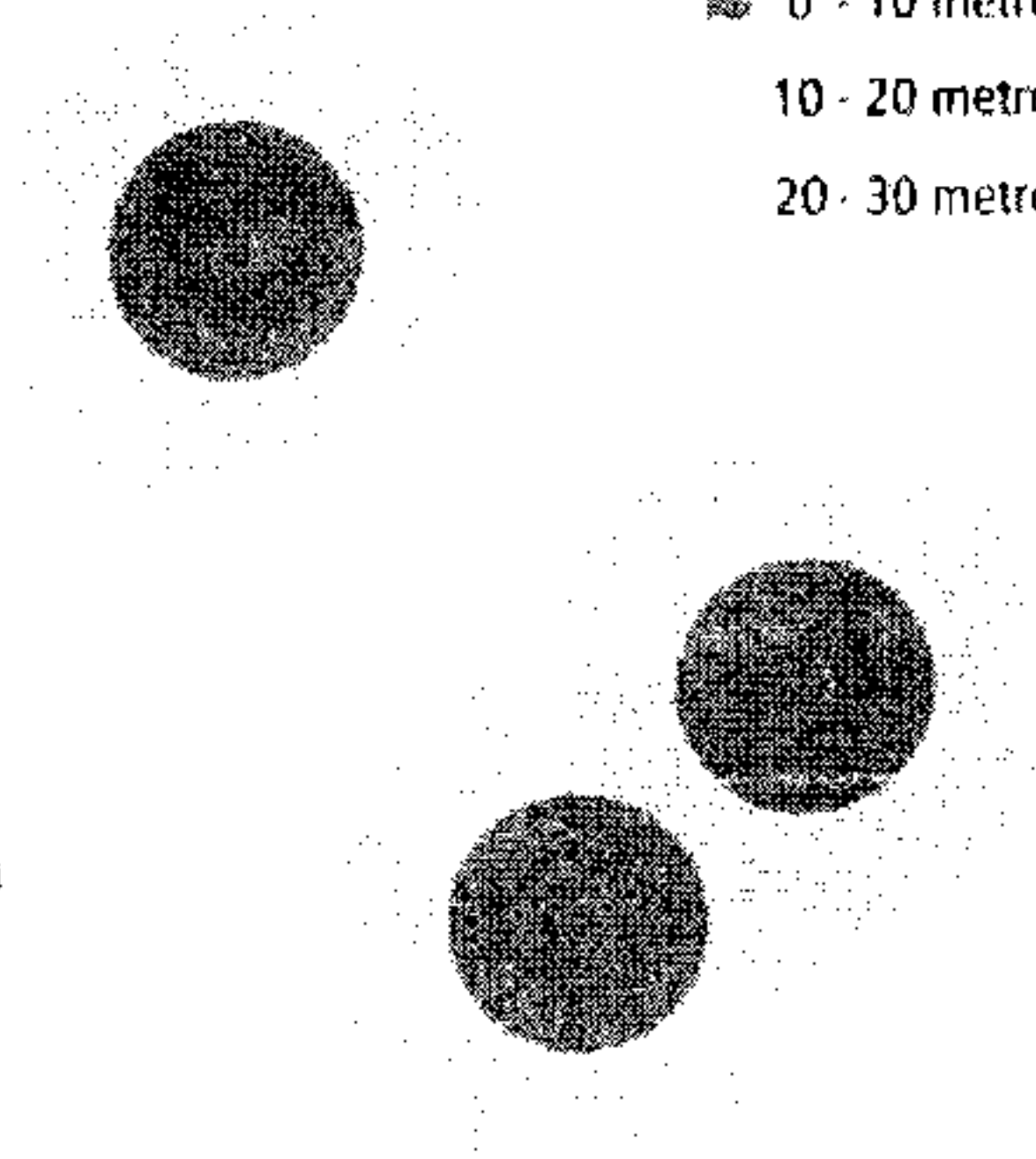
This is undergoing a review. New guidelines are expected in the next few months.

Badger disturbance

Work that disturbs badgers whilst occupying a sett is illegal without a licence. Badgers could be disturbed by work near the sett even if there is no direct interference or damage to the sett. Disturbance is difficult to determine and only the Courts can decide what constitutes disturbance under the Act. In order to aid developers in planning work English Nature has guidelines on the types of activity which it considers should be licensed within certain distances of sett entrances. For example the following may require a licence:

- using very heavy machinery (generally tracked vehicles) within 30 metres of any entrance to an active sett;
- using lighter machinery (generally wheeled vehicles), particularly for any digging operation, within 20 metres;
- light work such as hand digging or scrub clearance within 10 metres.

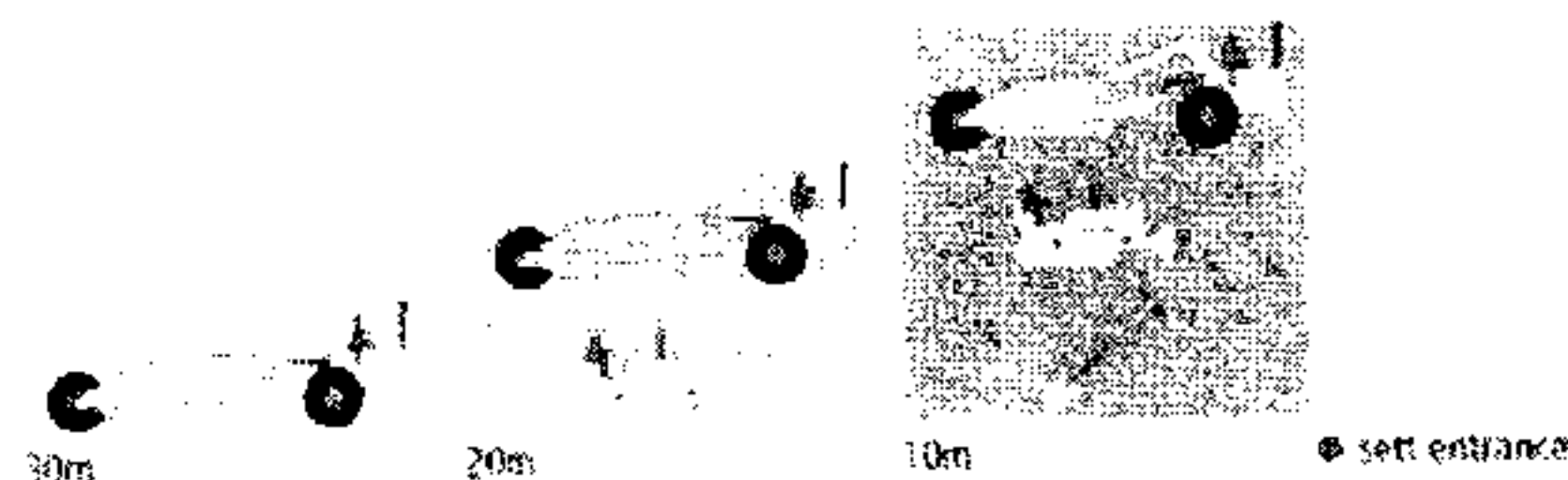
- sett entrance
- 0 - 10 metres
- 10 - 20 metres
- 20 - 30 metres



These distances do not indicate the amount of land which badgers need to sustain their long-term survival after development.

The above illustration shows how areas around sett entrances can overlap

There are some activities which may cause disturbance at greater distances (such as using explosives or pile driving) and these should be given individual consideration. In considering whether or not a licence is necessary, English Nature will take into account the likely affect on badgers. We will not issue licences 'just in case' badgers are disturbed.



Examples of activities requiring a licence near a badger sett

CF07/3249/F

Betts Estates

Nature Conservation Management Plan

CAPABILITY and QUALITY ASSURANCE

The Christopher Betts Practice ("Betts Ecology") was founded in 1985 to provide high quality professional services to meet an increasing market demand in applied environmental science, especially environmental biology. The Practice stems from the Betts family business which was established in 1760 for the refining and recycling of high value industrial wastes and mineral ores. Betts Ecology thus offers an unusual blend of technical, academic and practical expertise in a range of environmental scientific disciplines, allied particularly to the biological conservation legislation and biodiversity policies of the 1980s and 1990s. Contracts undertaken cover a wide range of projects at local, national and international levels in the construction, extractive, agricultural, leisure, energy and general industrial sectors. The Practice is a member of the Institute of Environmental Management and Assessment. Scientific staff belong to appropriate professional institutes by whose codes of practice they abide.

Katey Stephen BSc(Hons), MIEEM (Senior Ecologist) has a first degree in environmental biology and many years' field ecology experience. Katey has extensive NVC experience in survey of all lowland habitats to Phase I and II levels; she prepared the chapter on NVC in Worcestershire for the Worcestershire Flora. She has practical experience in submission of successful Entry and Higher Level Environmental Stewardship Schemes, Farm Environment Plans and Countryside Stewardship Schemes and has undertaken woodland ecological survey work to Forestry Commission standards in England and Wales, independent assessments setting out mitigation and compensation reports for planning applications, impact assessment work, site-based surveys, strategic landscape-based surveys and licence work, project management of wildlife works including Wildlife and Countryside Act licence work, habitat creation and translocation. Her wealth of knowledge and experience allows her successfully to represent clients at Public Inquiries. Katey is proficient in the use of modern field technology such as GPS and GIS.

Christopher Betts Environmental Biology Ltd
Bank House
Martley
Worcester WR6 6PB
United Kingdom

T +44 (0)1866 888445
F +44 (0)1866 888782
E nature@bettsecology.com

More information is available at www.bettsecology.com

Betts Ecology 
Betts Environment Betts Estates Betts Expert Services

 **iema**
corporate
member