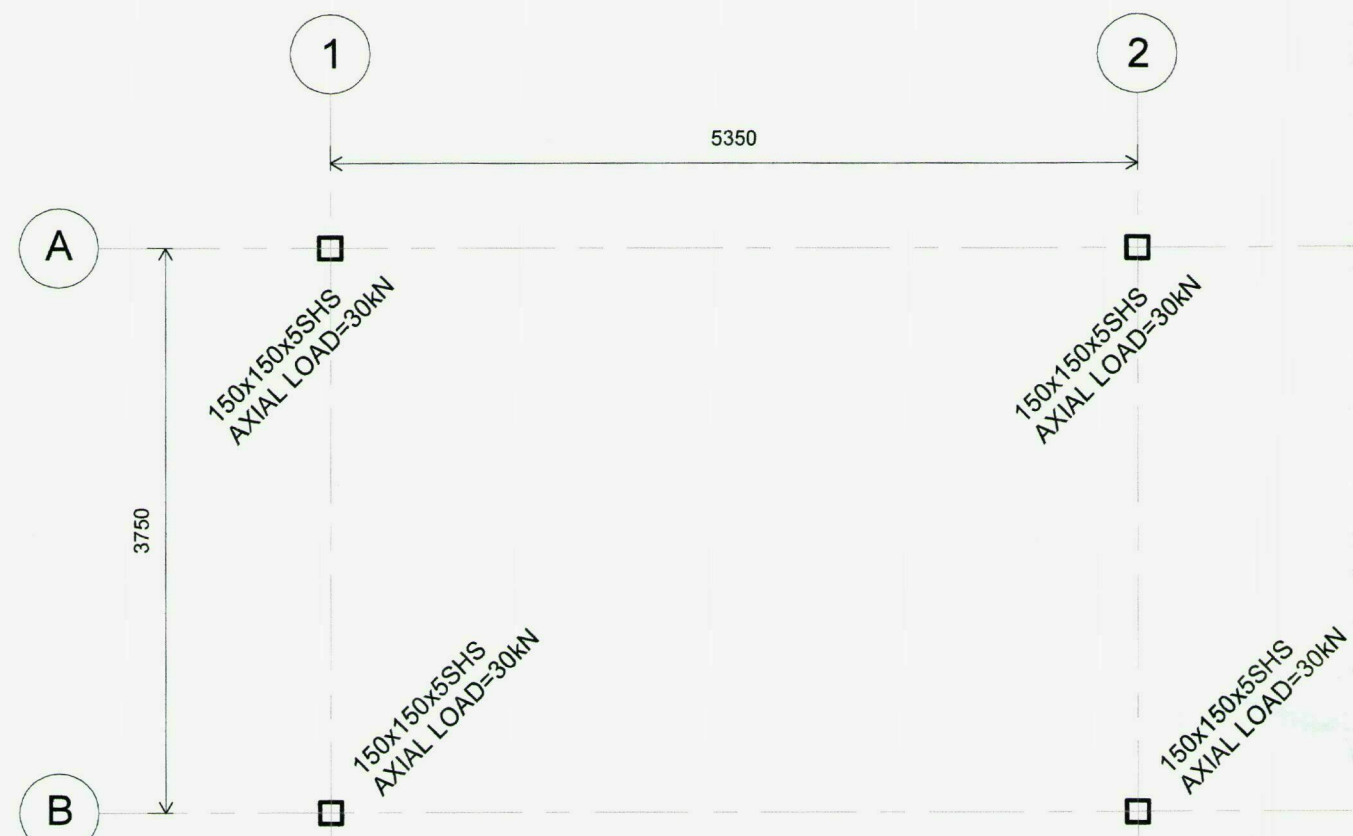


1 Foundation GA
1 : 50

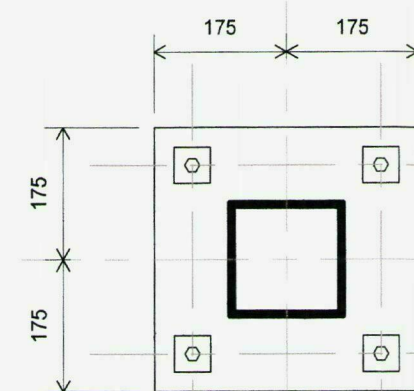


2 Column GA
1 : 50

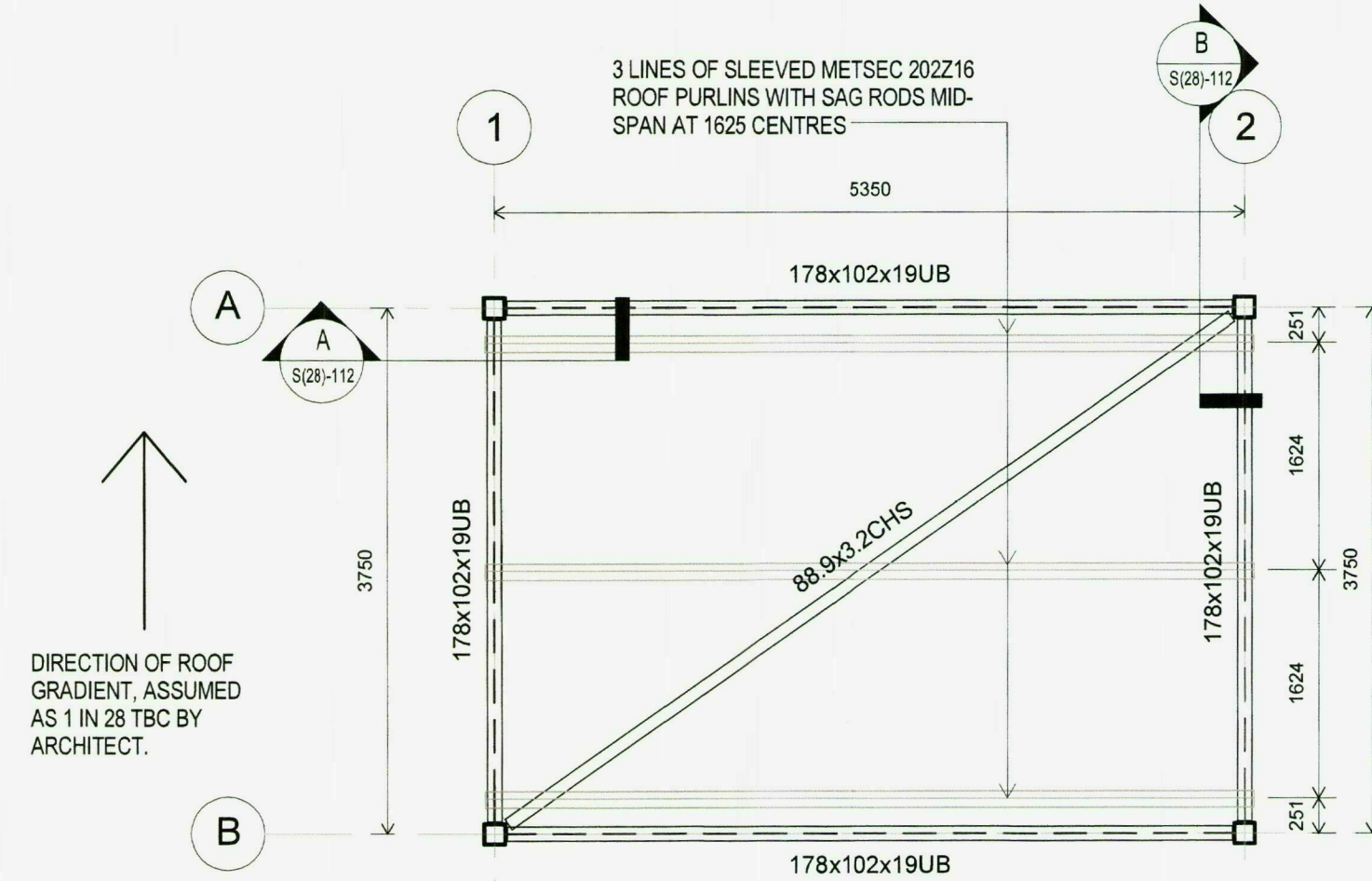
PLATE THICKNESS AND BOLT SIZE TO BE DETERMINED BY THE STEELWORK FABRICATOR.

4 No. SSOX HOLDING DOWN BOLTS

Min. BOLTS TO BE M16x300mm LONG

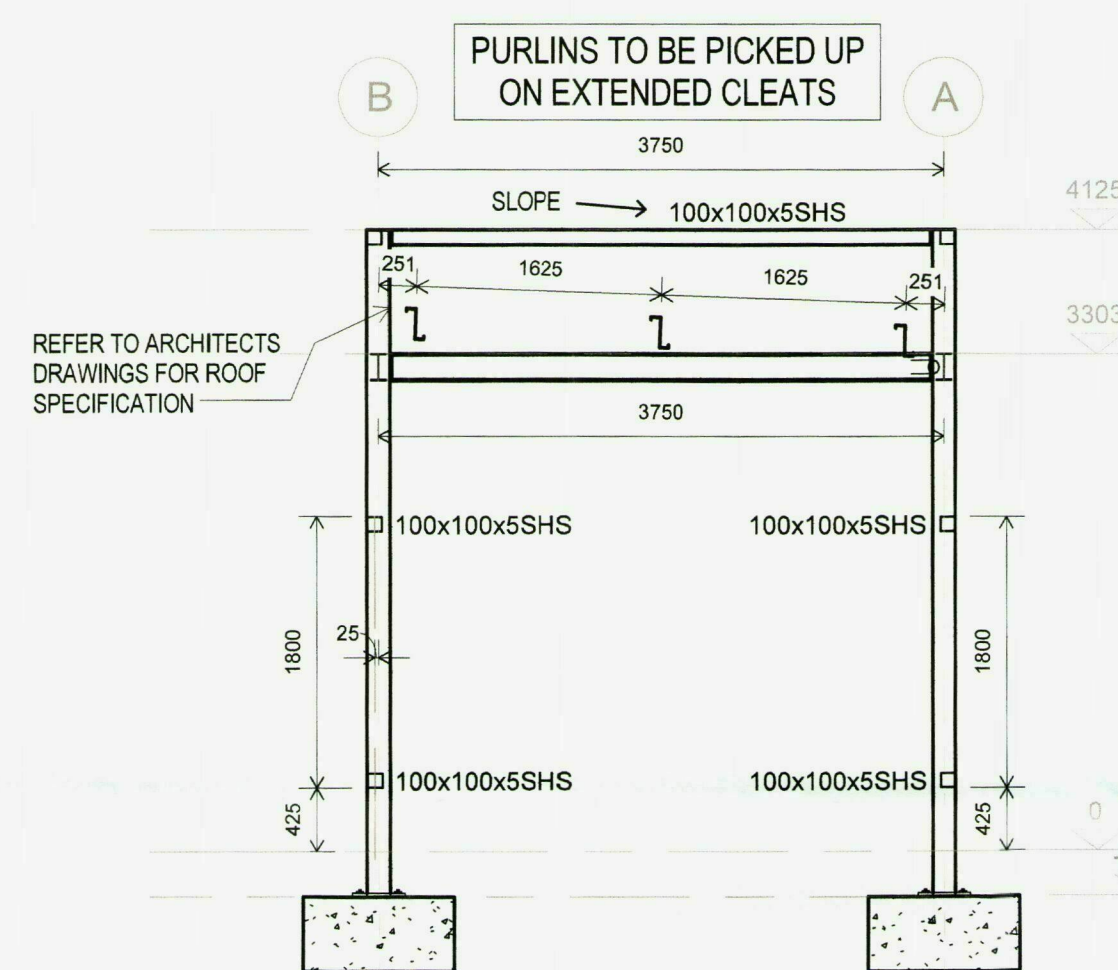


7 Baseplate Detail
1 : 10

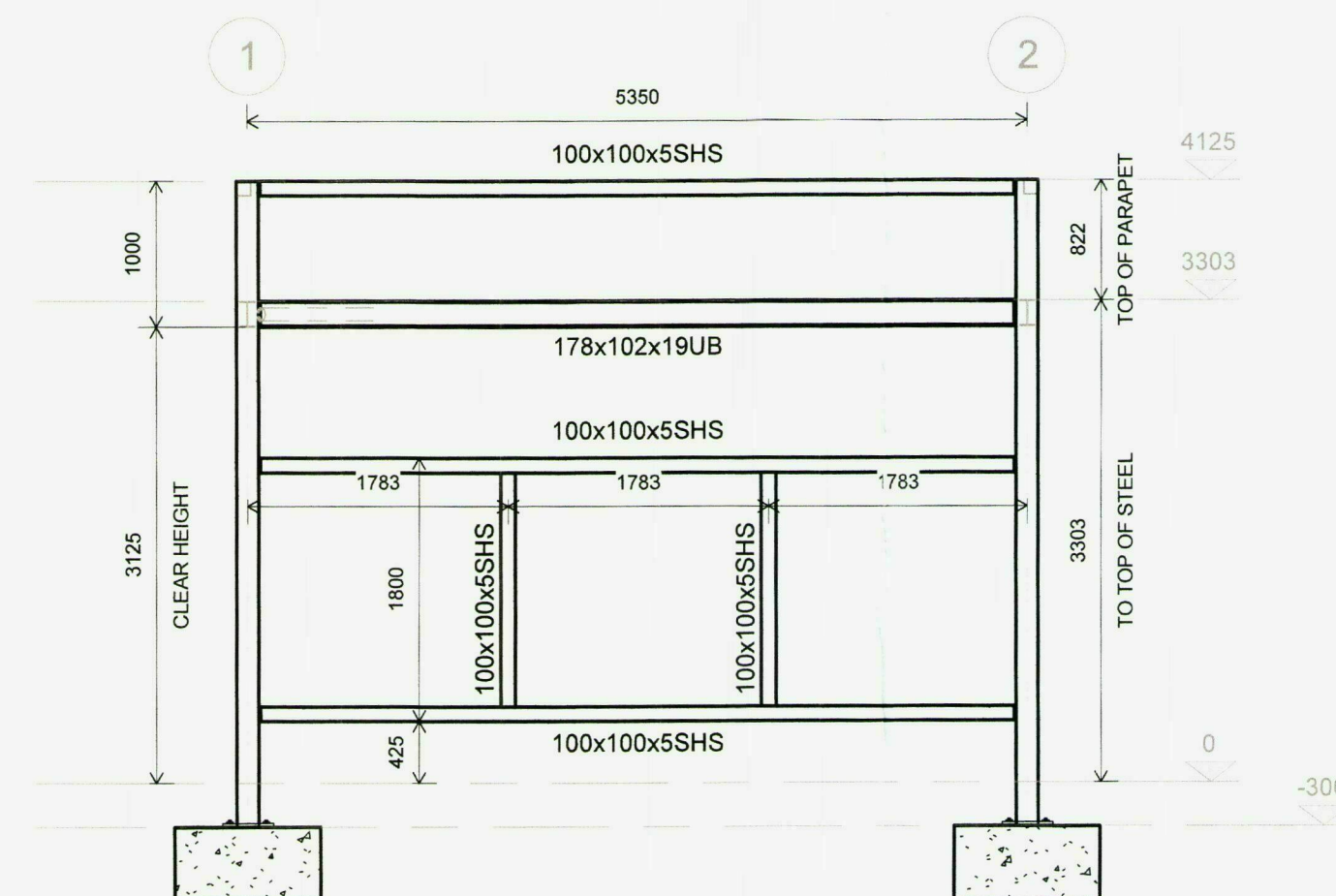


3 Roof GA
1 : 50

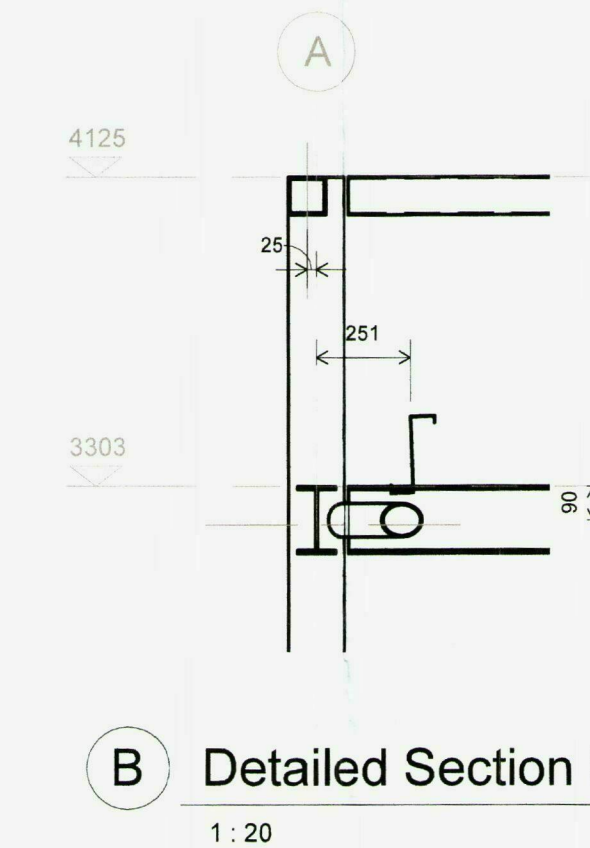
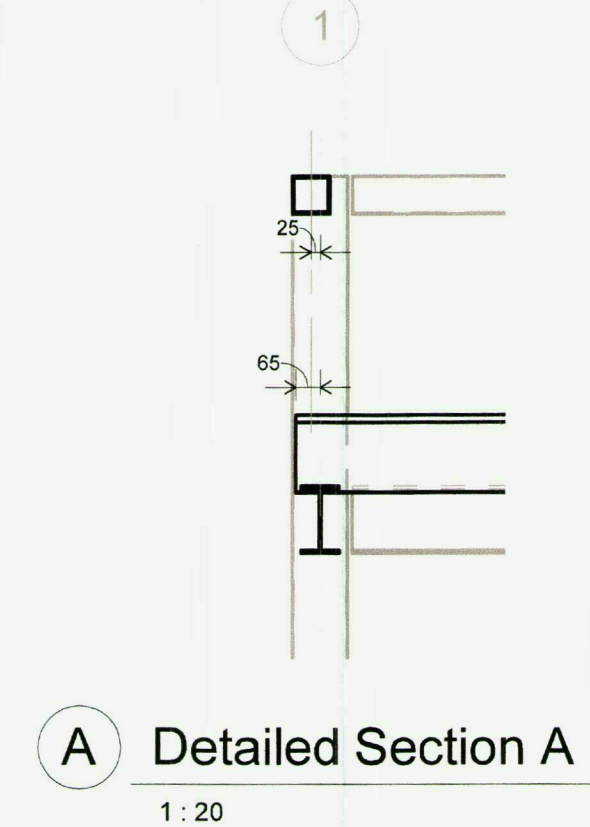
ALL ROOF BEAM CONNECTIONS TO VERTICAL POSTS (BOTH DIRECTIONS) TO BE DESIGNED TO SUPPORT THE FOLLOWING VERTICAL LOAD AND MOMENT :-
V=30kN
M=30kNm



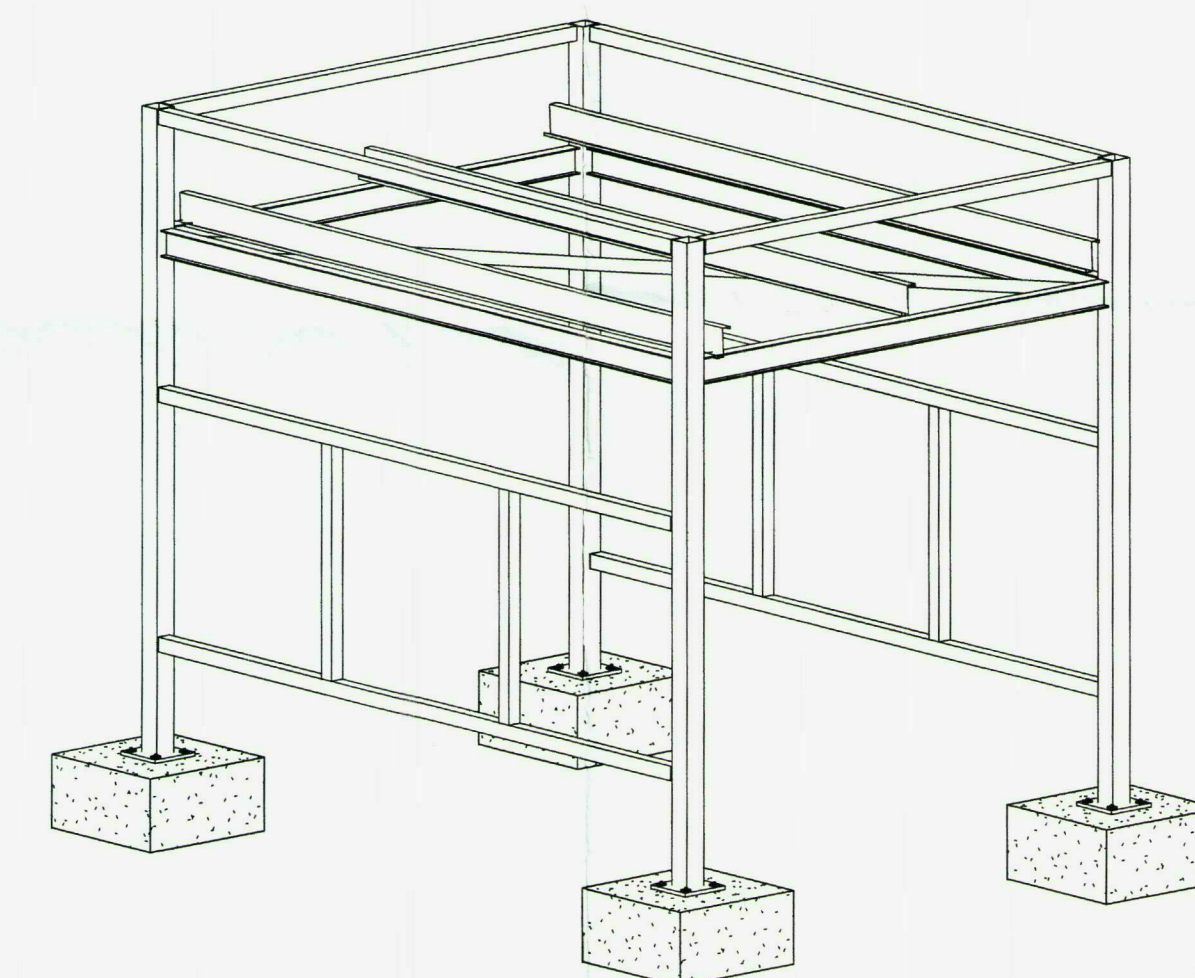
4 Elevation Grid 1/2
1 : 50



5 Elevation Grid A/B
1 : 50



B Detailed Section B
1 : 20



6 3D View

NOTE
FOUNDATION LEVELS AND COLUMNS LENGTHS TO BE DETERMINED BY SITE SPECIFIC LEVELS (Min. 300mm BELOW GROUND)

THIS DRAWING TO BE READ IN CONJUNCTION WITH ALL RELEVANT ARCHITECTS DRAWINGS

THE DESIGN OF THE CANOPY IS BASED ON A STORE LOCATED IN A COSTAL REGION WITH A WIND SPEED OF 27m/s AND AN ALLOWABLE GROUND BEARING PRESSURE OF 50kN/m²

STRUCTURAL STEELWORK NOTES (MJM DESIGN)

- ALL STEELWORK TO BE IN ACCORDANCE WITH MJM CONSULTING ENGINEERS NBS-SECTION G10
- ALL STEELWORK SUBJECT TO NORMAL TEMPERATURES TO HAVE MINIMUM GRADE OF S355 (INTERNAL STEELWORK) & S355JO (EXTERNAL STEELWORK) TO BS EN 10025, DESIGNED & FABRICATED TO BS 5950
- ALL STEELWORK TO RECEIVE A PROTECTIVE COATING SYSTEM AS INDICATED BELOW, IN ACCORDANCE WITH MJM CONSULTING ENGINEERS NBS-SECTION G10-600 :-

STEELWORK LOCATION	PROTECTION SYSTEM
INTERNAL	CLAUSE 641
EXTERNAL - NON-GALVANISED	CLAUSE 644
EXTERNAL - GALVANISED	CLAUSE 620

- ALL BELOW GROUND STEELWORK TO BE ENCASED IN MINIMUM 100mm CONCRETE BY MAIN CONTRACTOR
- GROUTING OF COLUMN BASES TO BE IN ACCORDANCE WITH MJM CONSULTING ENGINEERS NBS-SECTION G10-443
- ANY CLADDING SUPPORT MEMBERS NOT SHOWN ON THESE DRAWINGS TO BE SUPPLIED BY CLADDING SUB-CONTRACTOR

- ALL CONCRETE WORK IS TO BE IN ACCORDANCE WITH MJM CONSULTING ENGINEERS NBS-SPECIFICATION SECTION E
- RELEVANT CONCRETE MIX DESIGN:-

CONCRETE ELEMENT	DESIGN CHEMICAL CLASS	SPEC. CLAUSE No.
BURIED CONC.	DC-1	130C

- ALL FOUNDATION CONCRETE TO BE C28/35
- FOUNDATION DESIGN BASED ON AN ASSUMED BEARING PRESSURE OF 50kN/m²
- ALL FOUNDATIONS TO BE LOCATED ON GRID INTERSECTIONS

A	28.03.13	AMENDED TO SUIT COMMENTS	JB	LK
Rev	Date	Amendment		
Drawing Status				
CONSTRUCTION				
<p>MJM CONSULTING ENGINEERS LTD Southgate House Southgate, Wakefield United Kingdom, WF1 1TL Tel: 01924 811000 Fax: 01924 811118 E-mail: info@mjm.co.uk Web: www.mjm.co.uk</p>				
<p>CIVIL & STRUCTURAL GEOTECHNICAL & ENVIRONMENTAL TRAFFIC & HIGHWAYS</p>				
<p>Project ASDA Click and Collect Canopy</p>				
<p>Client ASDA part of the WAL-MART family</p>				
<p>Dwg Title Canopy GA Plans and Details - Grocery Collection Option Two</p>				
Scale	As Indicated @A1	2x SCALE @A3	DDG	LK
Date	Feb' 2013	Path W:\DATA\5530-ASDA Click and Collect\Drawings\5530-MJM-Grocery Collection - Option 2.dwg		JPL
Project No	5530	Dwg No	S(28)-112	Rev
				A