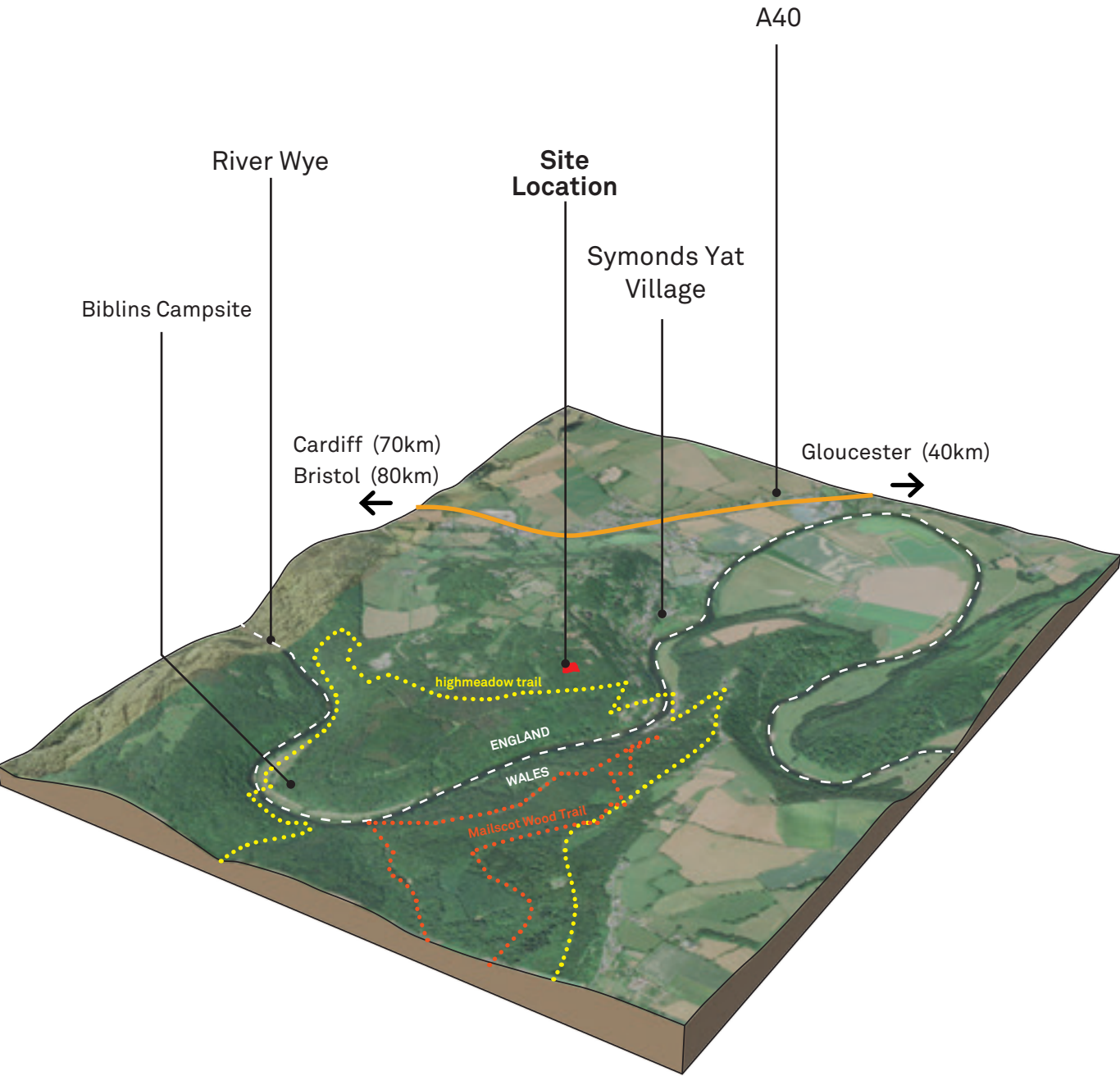
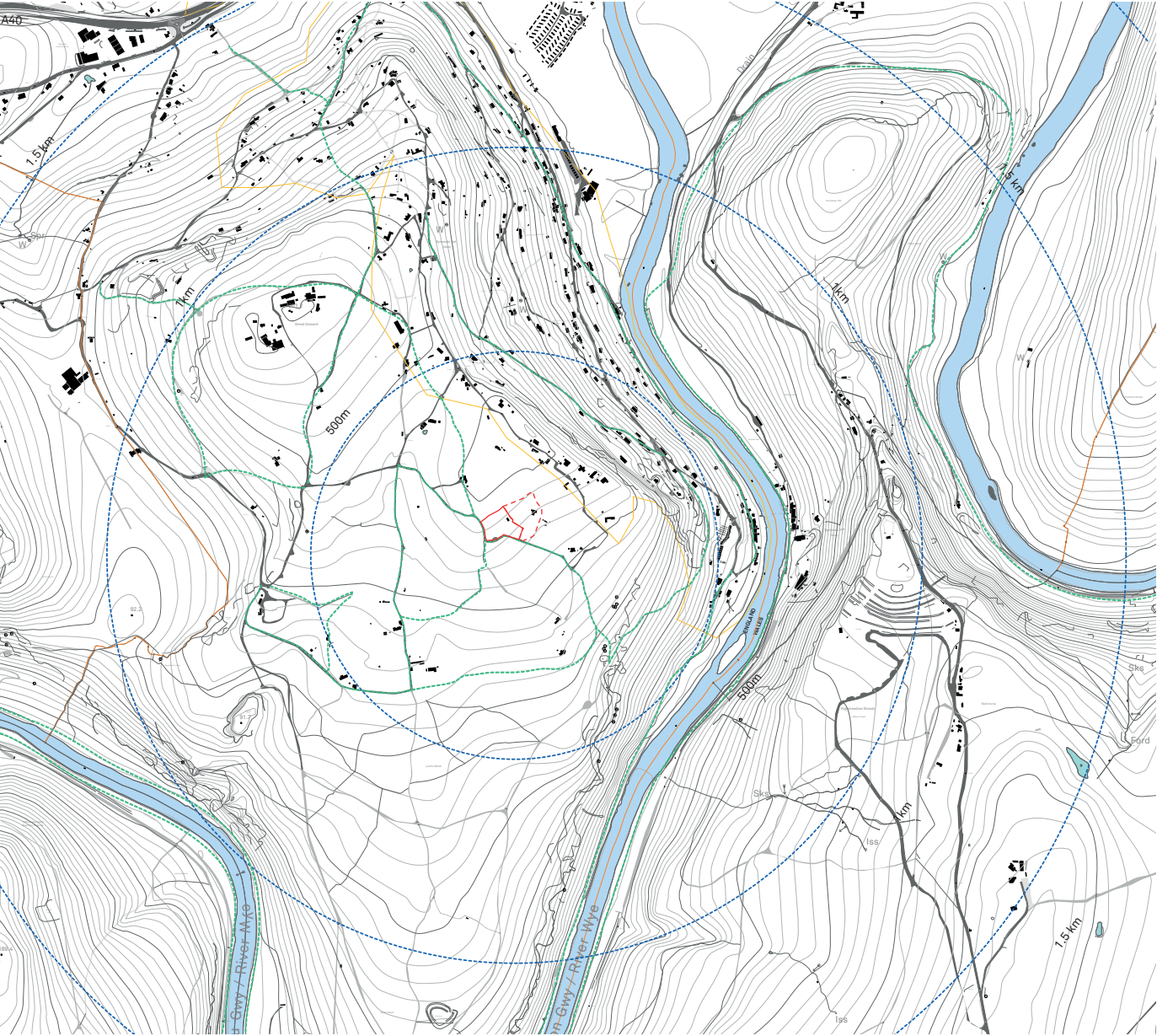


CONTEXT
SITE LOCATION



WIDER CONTEXT

Symonds Yat is a villiage divided into two parts (East and West) by the River Wye. Inhabitants cross from one side to the other using two cable 'pull' ferries operated by hand by ferrymen. The site is situated up the vally on the west side of Symonds Yat West. Because of this the site is slightly inclined to the south east.



KEY

- Regional Boundary
- Symonds Yat Urban Extent
- Public Footpath
- Site Boundary
- Proximity

Local Stakeholders

To ensure the building is as successful as possible in meeting its targets we hope to be a reliable client of and an honest neighbour to many local business' and organisations.

History

The local area is rich with historical precedent of interesting material sourcing. Predominantly mining coal but also harvesting timber. This proposal does its best to respect and re-vitalise that history.