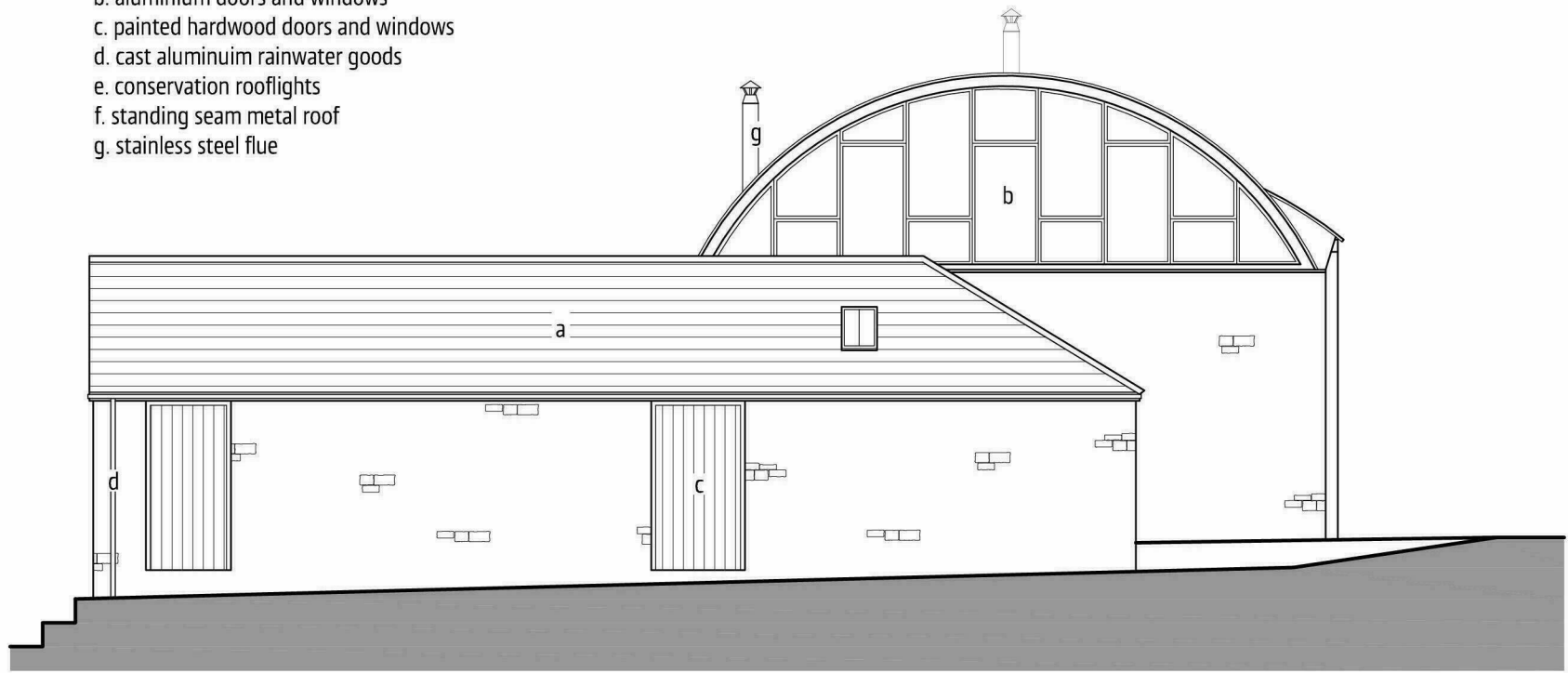
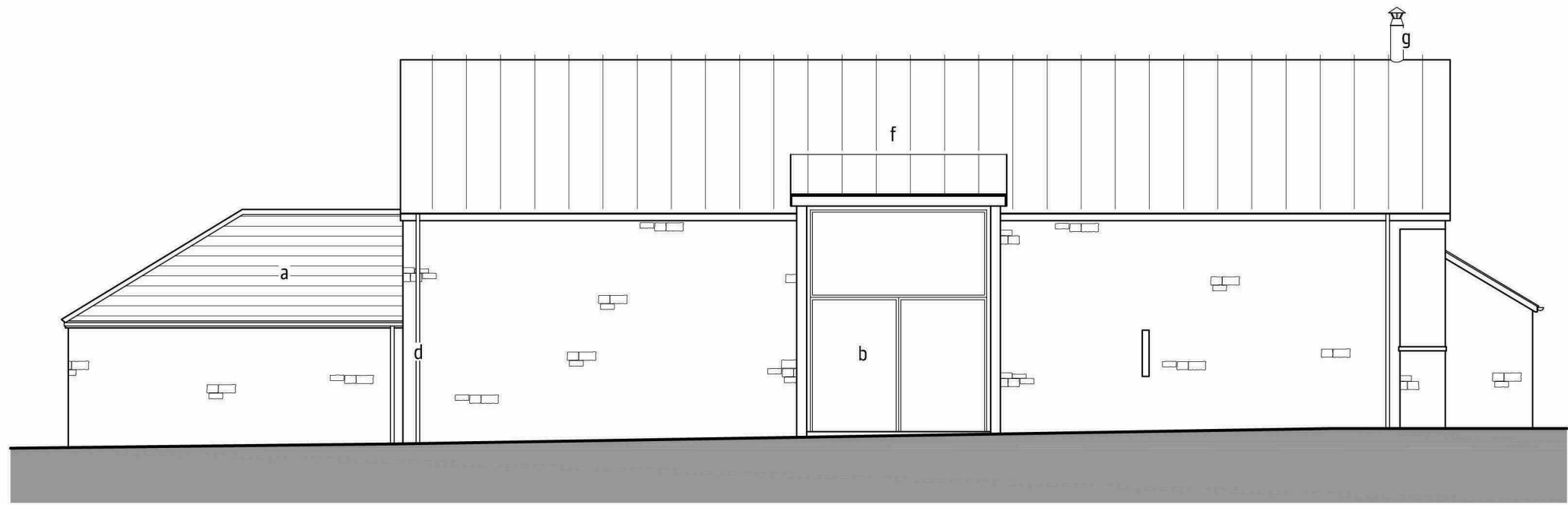


KEY TO MATERIALS

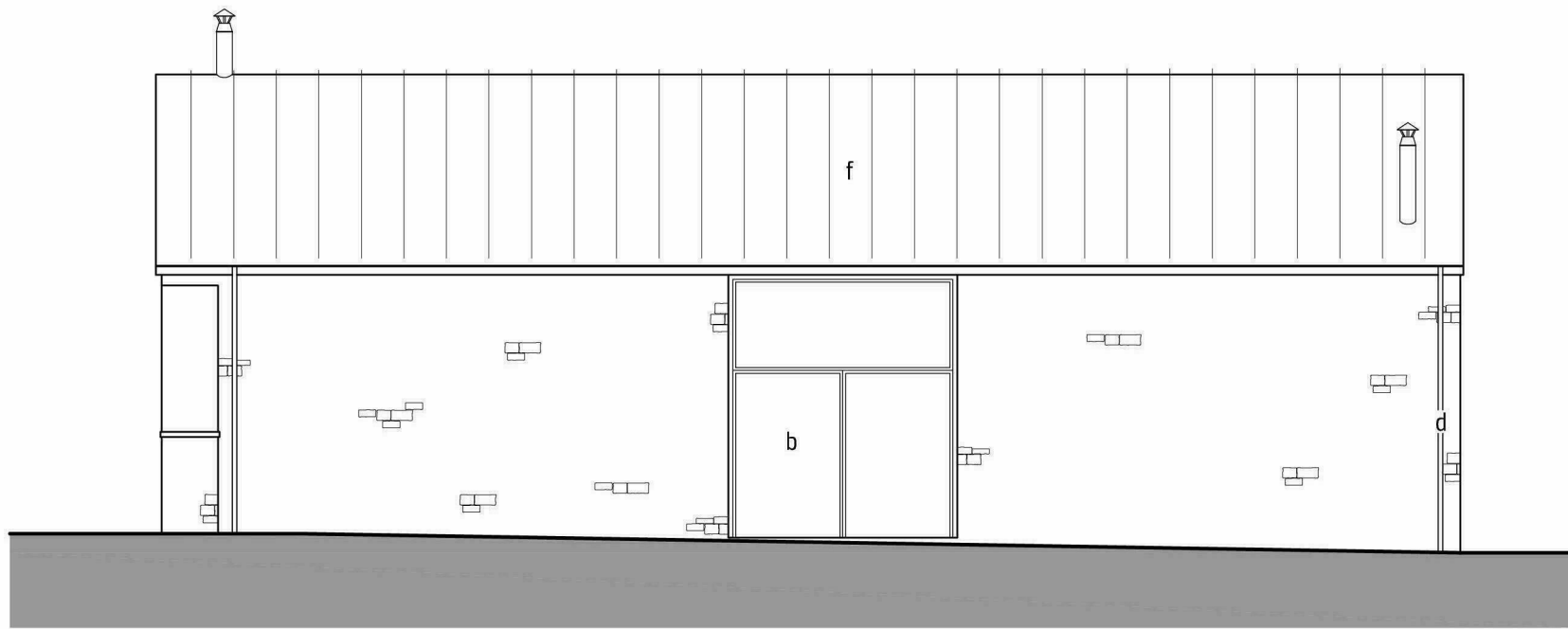
- a. natural slate roofing
- b. aluminium doors and windows
- c. painted hardwood doors and windows
- d. cast aluminium rainwater goods
- e. conservation rooflights
- f. standing seam metal roof
- g. stainless steel flue



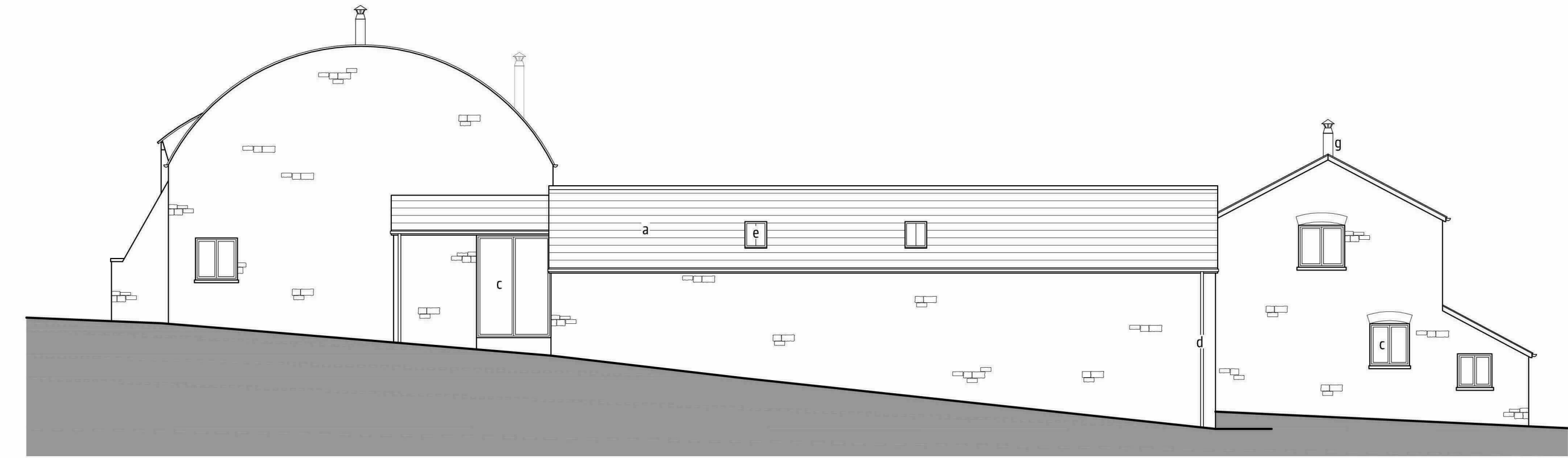
EAST ELEVATION (H)



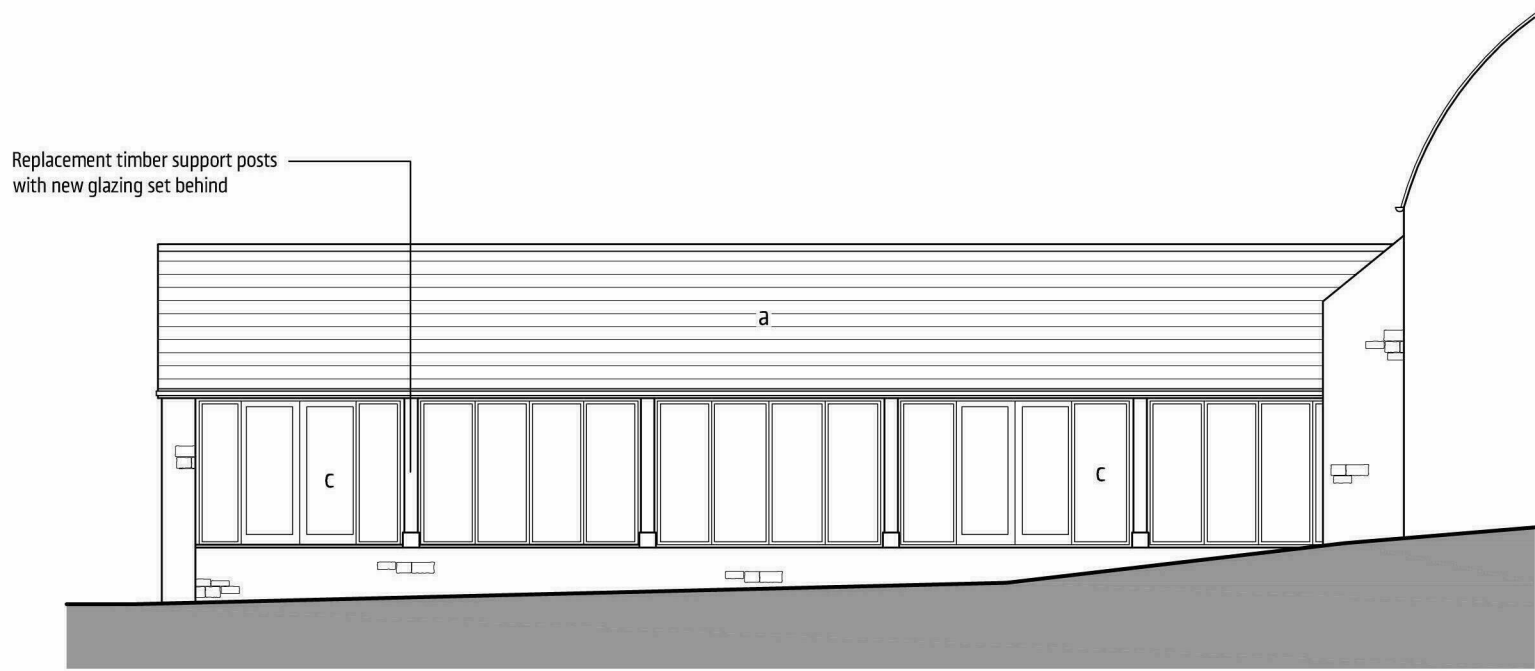
NORTH ELEVATION (A)



SOUTH ELEVATION (B)



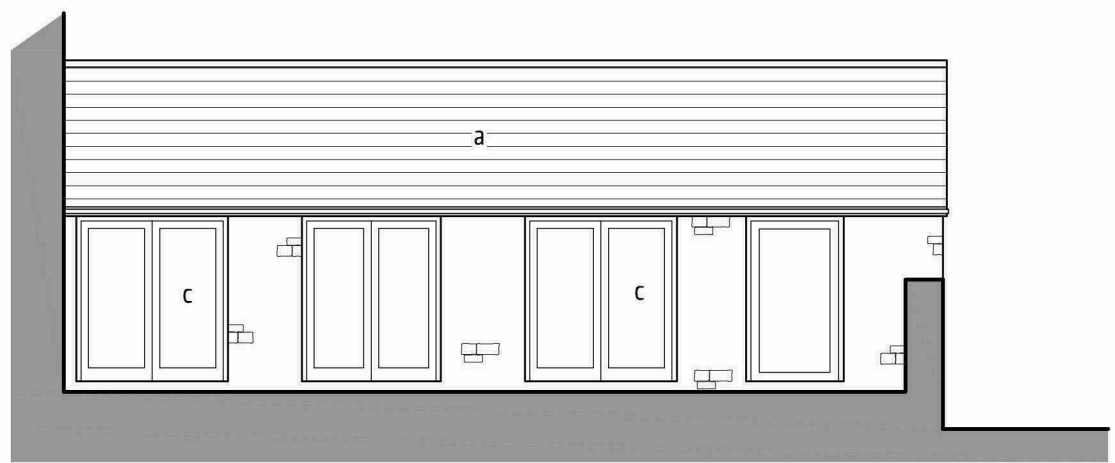
WEST ELEVATION (C)



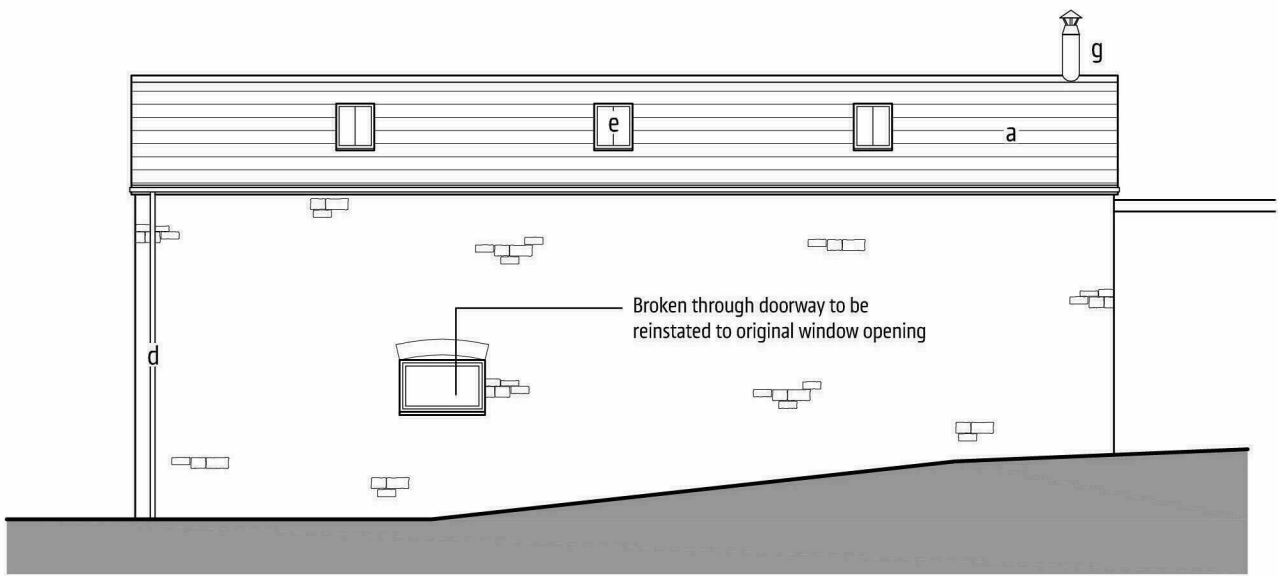
EAST ELEVATION (F)



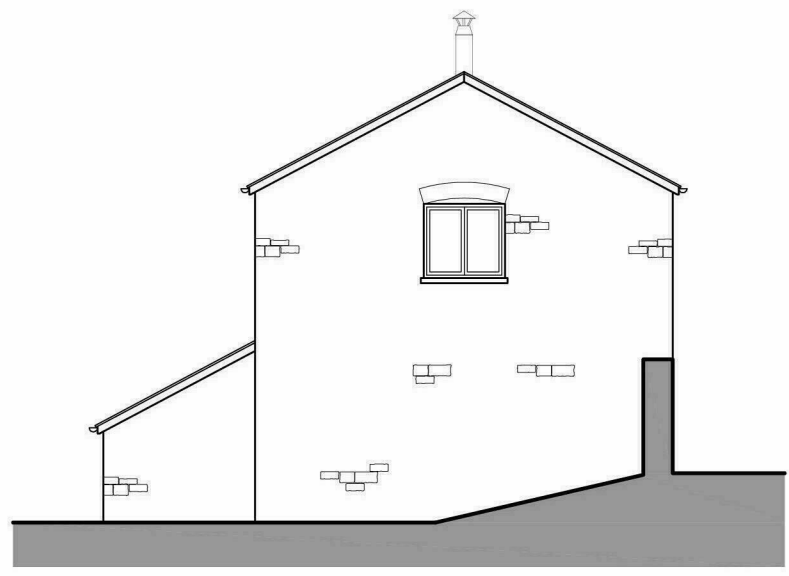
SOUTH ELEVATION (E)



WEST ELEVATION (G)



NORTH ELEVATION (D)



EAST ELEVATION (I)

EXTERNAL JOINERY

All external joinery to be finished in mid grey/blue RAL 7000

RAINWATER GOODS

New rainwater goods to be Yeoman Rainguard cast aluminium Black textured polyester powder coated plain half round gutters and matching 75mm dia downpipes.

EXTERNAL MASONRY

Existing stone walls re-pointed in NHL2 lime mortar

ROOFLIGHTS

New rooflights to be recessed/flush Conservation rooflights by 'The Rooflight Company' with central glazing bar.

FLUE

New flues where visible/penetrating through roof line to be finished in matt black