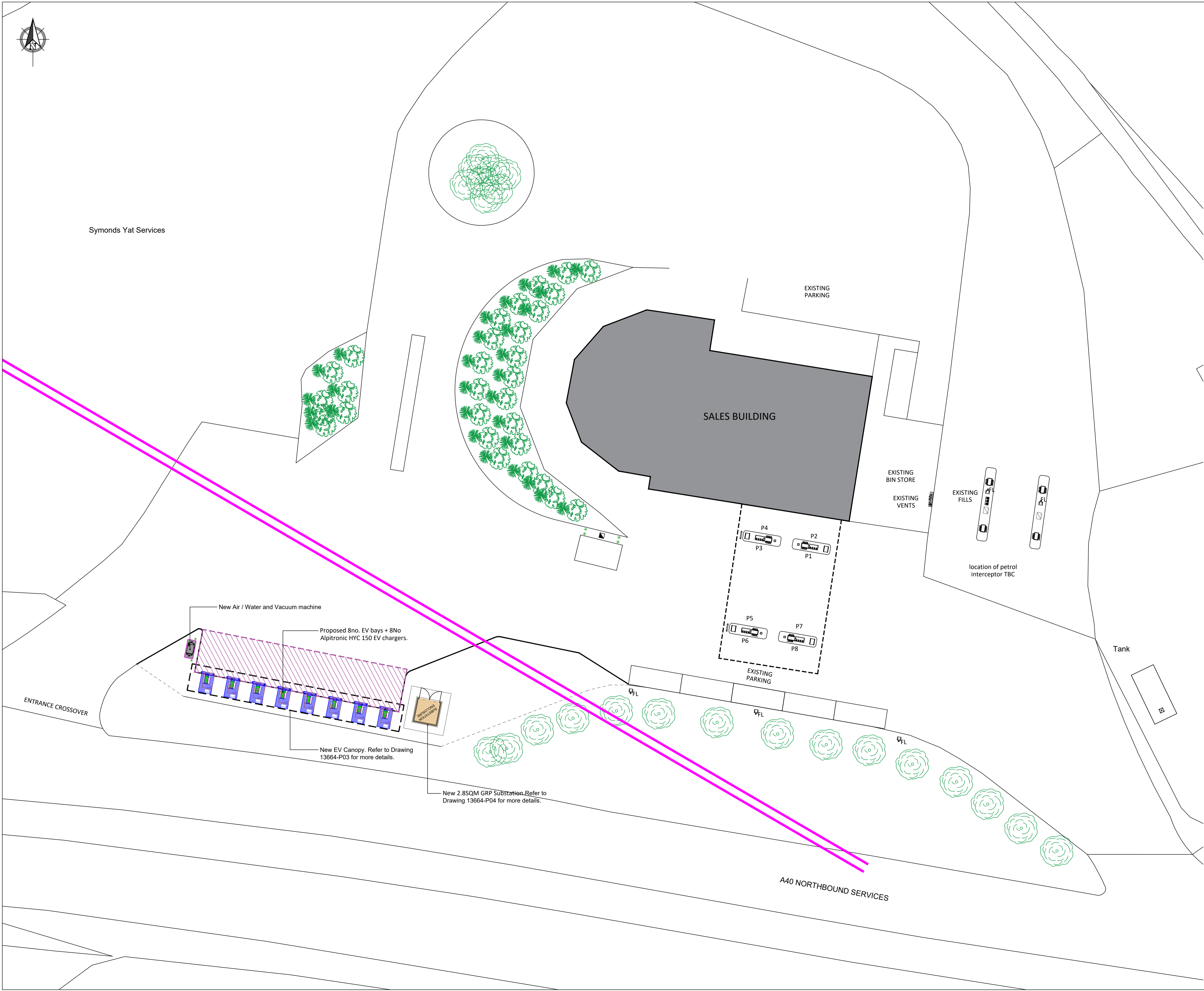




Symonds Yat Services

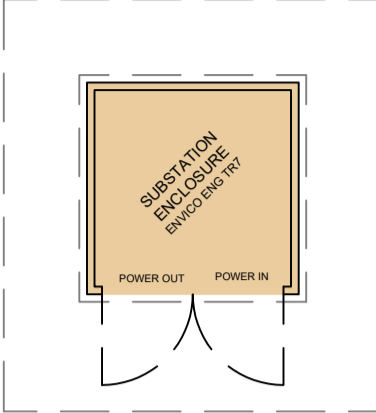


DRAWING NOTES

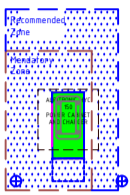
COPYRIGHT ©
This drawing and the details herein are the copyright of MBH Design Studio Ltd. and must not be reproduced, altered or passed to any third party without prior written consent.

This drawing has been produced for the project listed below, is submitted in support of this application application to the Local Planning Authority and is not intended for use by any other person or for any other purpose.

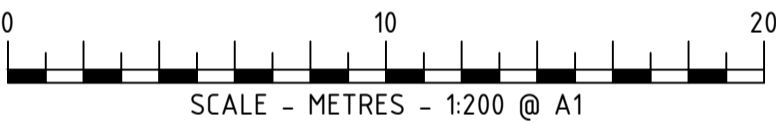
Every effort has been made to ensure the accuracy of these drawings, however MBH Design Studio Ltd. accept no responsibility for any discrepancies arising from the reuse of survey information and preliminary drawings commissioned by the Applicant from others.



DENOTES DNO HV/LV
SUBSTATION
Typical GRP Enclosure 2.8m x
2.8m. All to service provider
standard details.



DENOTES
CHARGING POST
ALPITRONICS HYC
150



B	04.08.2022	Public Footpath Shown	RRB/AM
A	15.07.2022	Updated Red Line	RRB/JR
REV	DATE	DESCRIPTION	DRAWN/CHECKED
REVISION NOTES			

PLANNING



MBH Design Studio Ltd.
Rosemount House, Rosemount Avenue, West Byfleet, Surrey, KT14 6LB
www.mbhtd.com t: 01932 352 727 f: 01932 351 545

CLIENT



PROJECT

FS425 SYMONDS YAT SERVICE STATION
A40 NORTHBOUND SERVICES
WHITCHURCH, HEREFORDSHIRE
HR9 6DP

DRAWING TITLE

PROPOSED SITE LAYOUT

DRAWN BY	DATE	SCALE	PAPER SIZE
EJ	07.02.2022	1:200	A1
CHECKED BY	DRAWING NUMBER	REV.	
JN	13664-P02-425	B	