



KEY | GS

Key GeoSolutions Ltd

Nova House
Audley Avenue
Newport
Shropshire
TF10 7DW

Tel: 01952 822960
Fax: 01952 822961

email: info@keygs.com
web: www.keygs.com

June 2, 2021

Ref: 20-215-L-001

Darwin Group Limited
FAO A Brindley

Email only

Dear Adam

re: John Kyle High School – Environmental Health Consultee Comments

Further review of information available reveals the following;

The ground investigation undertaken in 2012 identified loose asbestos fibres in a sample taken for WAC analysis, the sample came from Trial Pit 3. The sample was taken from the lower part of the made ground identified in Trial Pit 3 (log attached). The made ground was a total of 1.0m thick, at 0.8m depth below ground level pieces of cement bound asbestos sheet were encountered in a layer of ash (see trial pit log and Photograph 6).

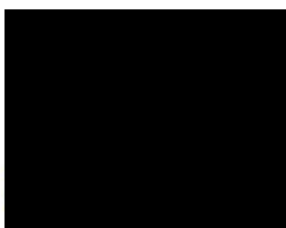
Trial Pit 3 was excavated at the eastern end of a building which on the OS Maps is identified as a pavilion, at the time of the 2012 investigation the building was a brick built store with a corrugated steel roof and wooden extension (Photographs 5 and 7). The school, including the pavilion was constructed between 1964 and 1968. From the construction of the roof on the brick section it is likely that the roof has been replaced at some point, possibly between 2001 and 2006 as the appearance of the roof changes on GoogleEarth images (see Photographs 1 to 4).

Prior to construction of the school in the 1960's the site had only previously been in use as agricultural land, hence it is likely that the asbestos sheet is from the replacement of the roof / partial demolition of the brick building.

The pavilion was demolished in 2012 to make way for the construction of the new L-shaped classroom block at the north-western corner of the MUGA (Photograph 4), hence the location of Trial Pit 3 and the pavilion is now beneath the new classroom block.

No asbestos was identified in the trial pits excavated in 2020 for the Science Block, a recommendation was made for suitable precautions to be taken by the groundworks contractor to mitigate against the potential presence of asbestos.

Yours faithfully



Brian Duthie

UK Registered Ground Engineering Advisor

Key GeoSolutions Limited


Site Name: John Kyrle High School		Date: 05-Jul-12	Easting: 360407	Pit No.: TP3			
Contract No.: 12-242		Drill Rig: Trial Pits	Northing: 225318	Client: Built Offsite			
Weather: Warm, slightly overcast		Logged by: W.Roberts	Elevation:	Draft			
Depth (m)		Lithology			Sample(s) B=Bulk U=Undisturbed C=Chemical	Shear Vane Test Results (kN/m2)	
From	To	Strata	Description			Shear Vane	Average
0.00	0.20	TOPSOIL	Brown slightly silty sandy TOPSOIL with frequent rootlets and occasional roots Ø = c.30mm				
0.20	1.20	MADE GROUND	Brown slightly silty slightly gravelly fine SAND. Gravel is fine to medium sub-rounded to sub-angular and of a variety of lithologies from 0.30 to 0.33m; band of black fine to coarse sand to gravel sized ASH from 0.40 to 0.50m; band of black fine to coarse sand to gravel sized ASH from 0.70m; becomes very silty. Gravel is fine to medium sub-angular to very angular and of sandstone at 0.80m; thick lamination of black fine to coarse sand sized ASH including sheets of probable asbestos		B & C B & C		
1.20	2.30	SAND	Red brown very silty fine SAND				
2.30	2.40	weathered SANDSTONE	Extremely weak dark red brown/grey fine to medium grained weathered SANDSTONE				
Comments: End of hole at 2.40m bgl Ground-water was not encountered during excavation.							Key GeoSolutions Ltd. Suite 6, Nova House Audley Avenue Enterprise Park Newport, Shropshire TF10 7DW Tel. 01952 822960 E-mail: info@keygs.co.uk



Photo 1. GoogleEarth aerial image dated December 2001. Showing “pavilion” roof as a patchwork of light grey and white sections.

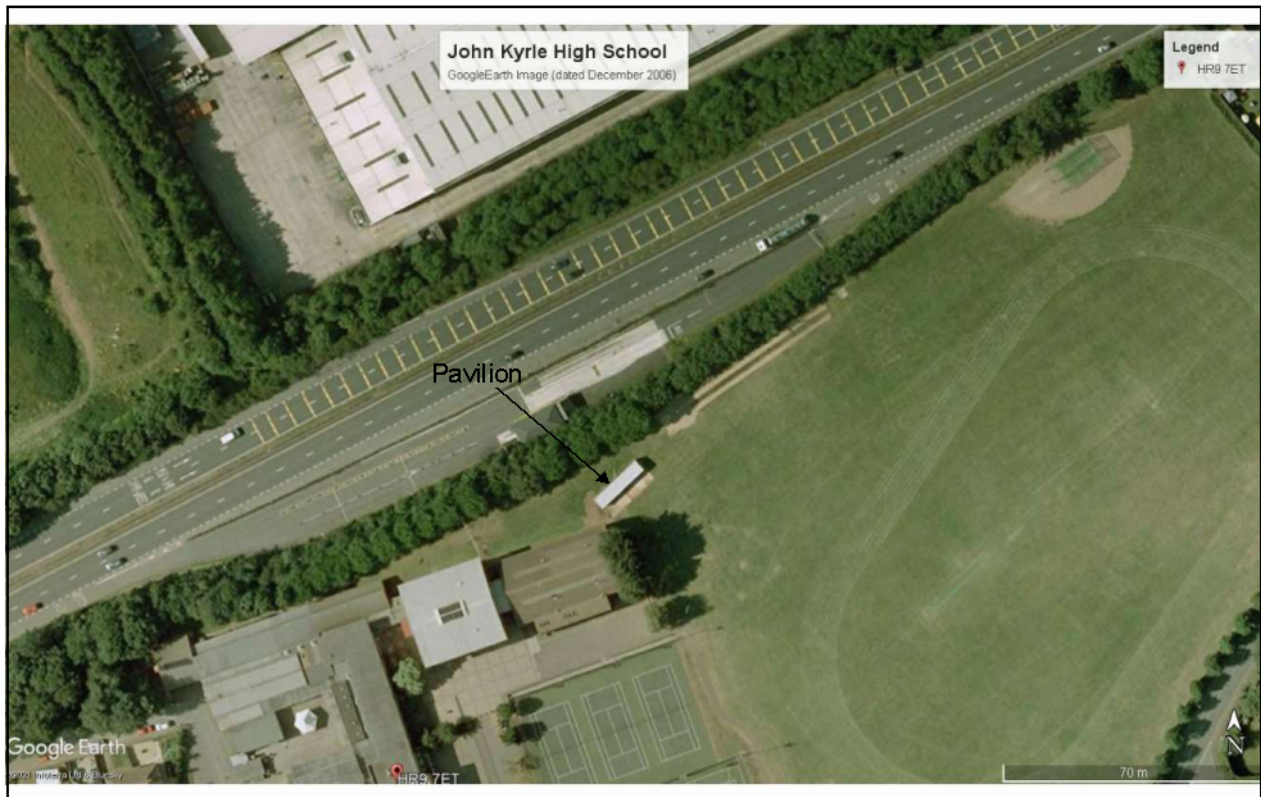


Photo 2. GoogleEarth aerial image dated December 2006. Showing “pavilion” roof as uniformly white.

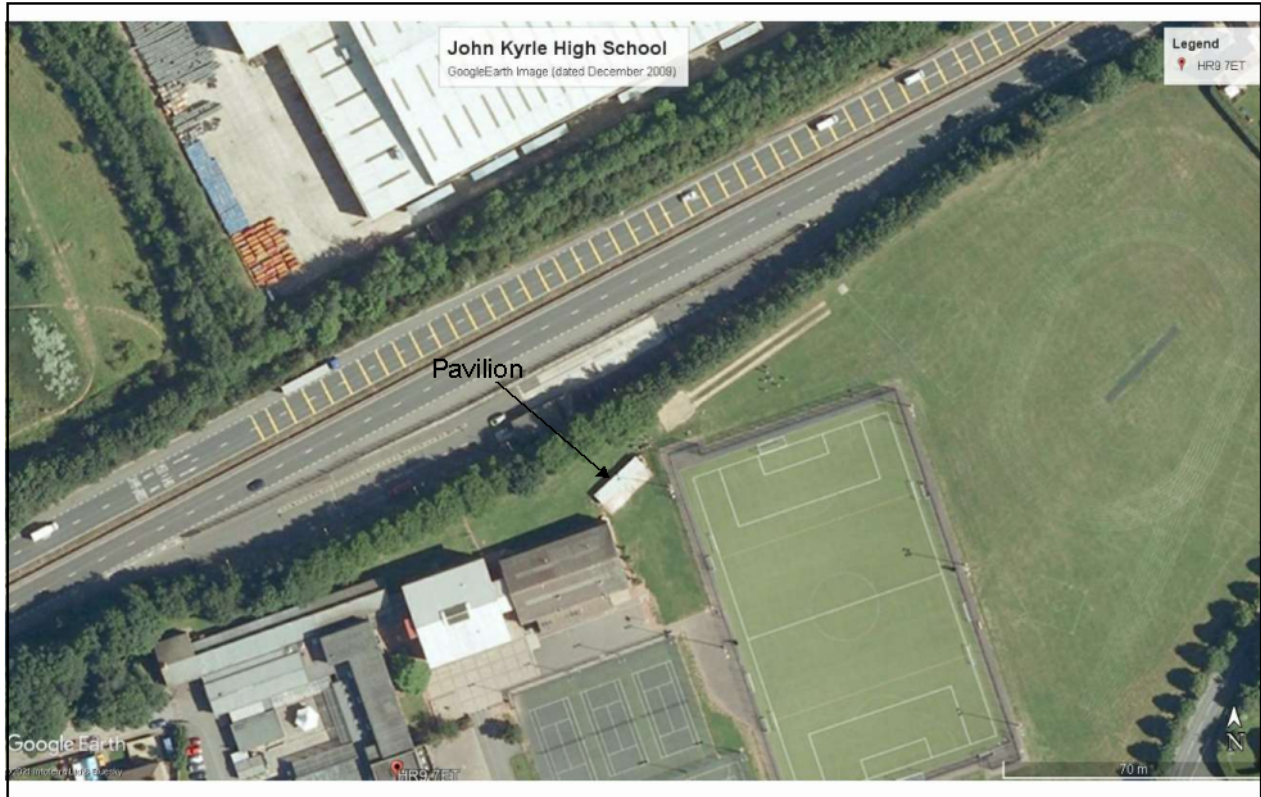


Photo 3. GoogleEarth aerial image dated December 2009. Showing “pavilion” roof as uniformly white.



Photo 4. GoogleEarth aerial image dated July 2013. Showing “pavilion” having been removed and replaces with a new school building.



Photo 5. View of “pavilion” from North East at time of July 2012 site investigation. Showing arisings from trial pit TP03 and “pavilion” with corrugated metal roof.

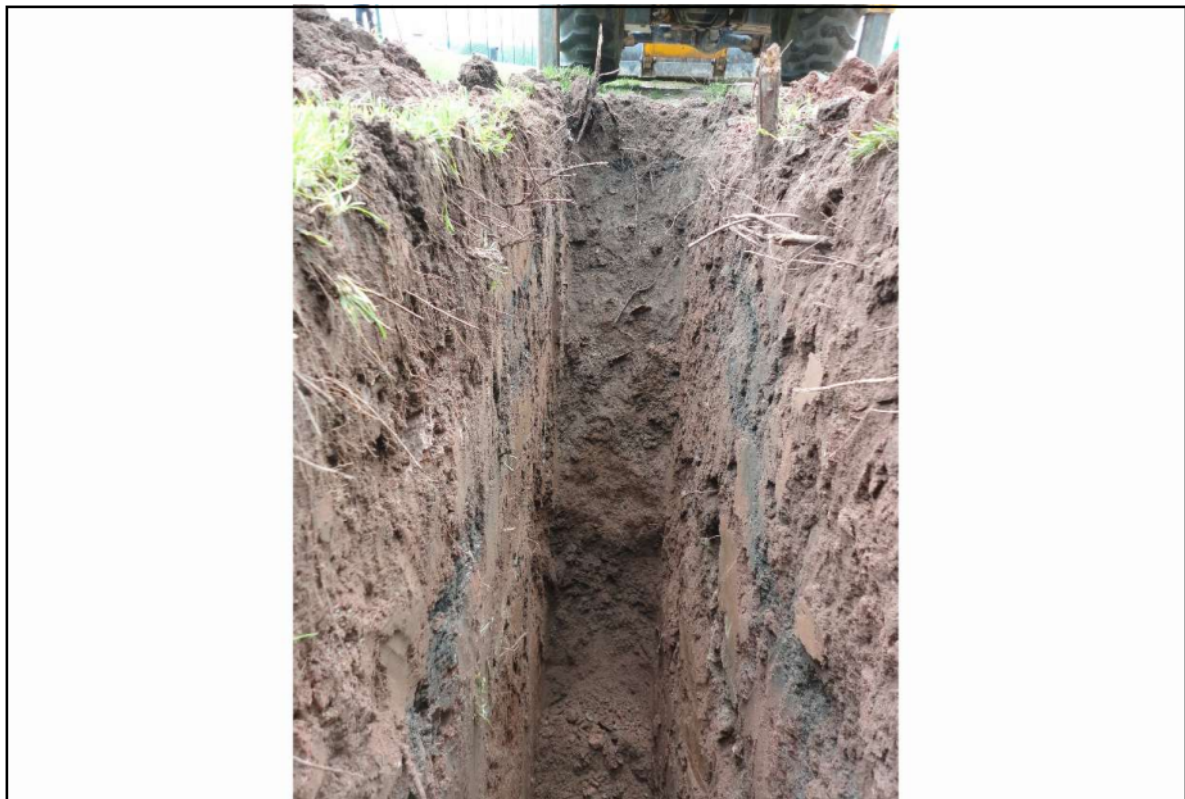


Photo 6. View of section through trial pit TP03 at time of July 2012 site investigation.



Photo 7. View of “pavilion” from West at time of July 2012 site investigation. Showing “pavilion” with corrugated metal roof and an additional green wooden extension.