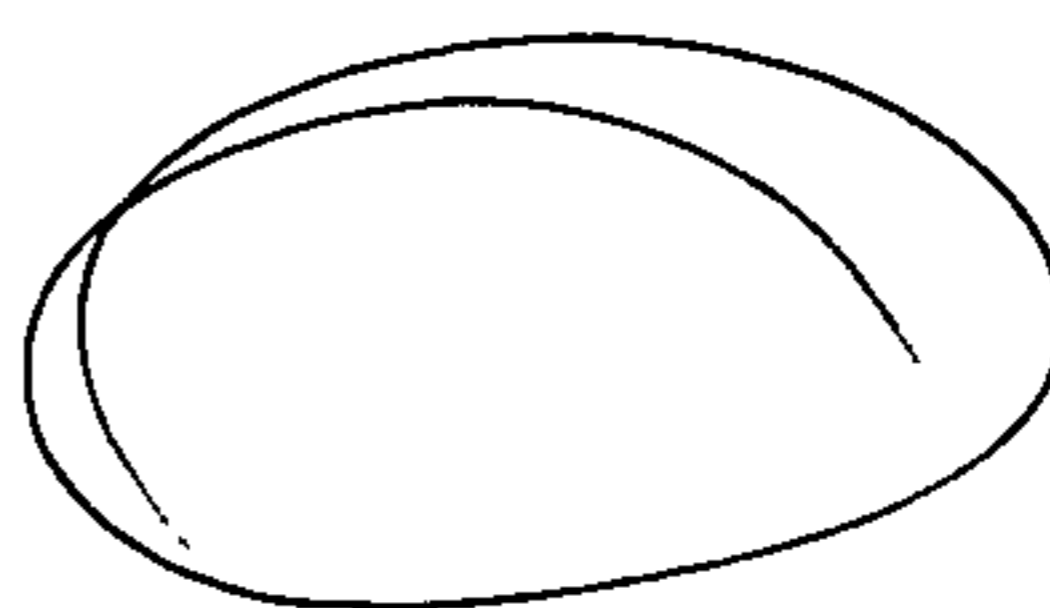
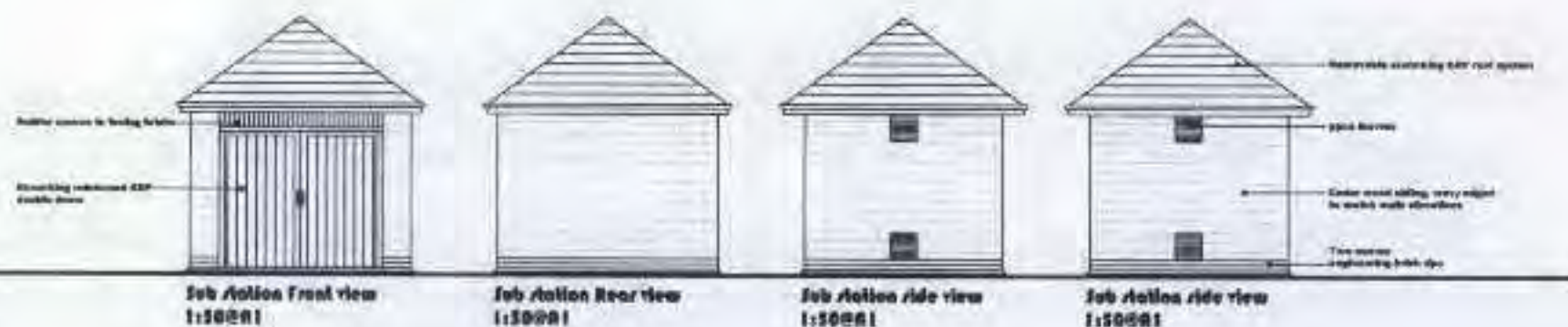
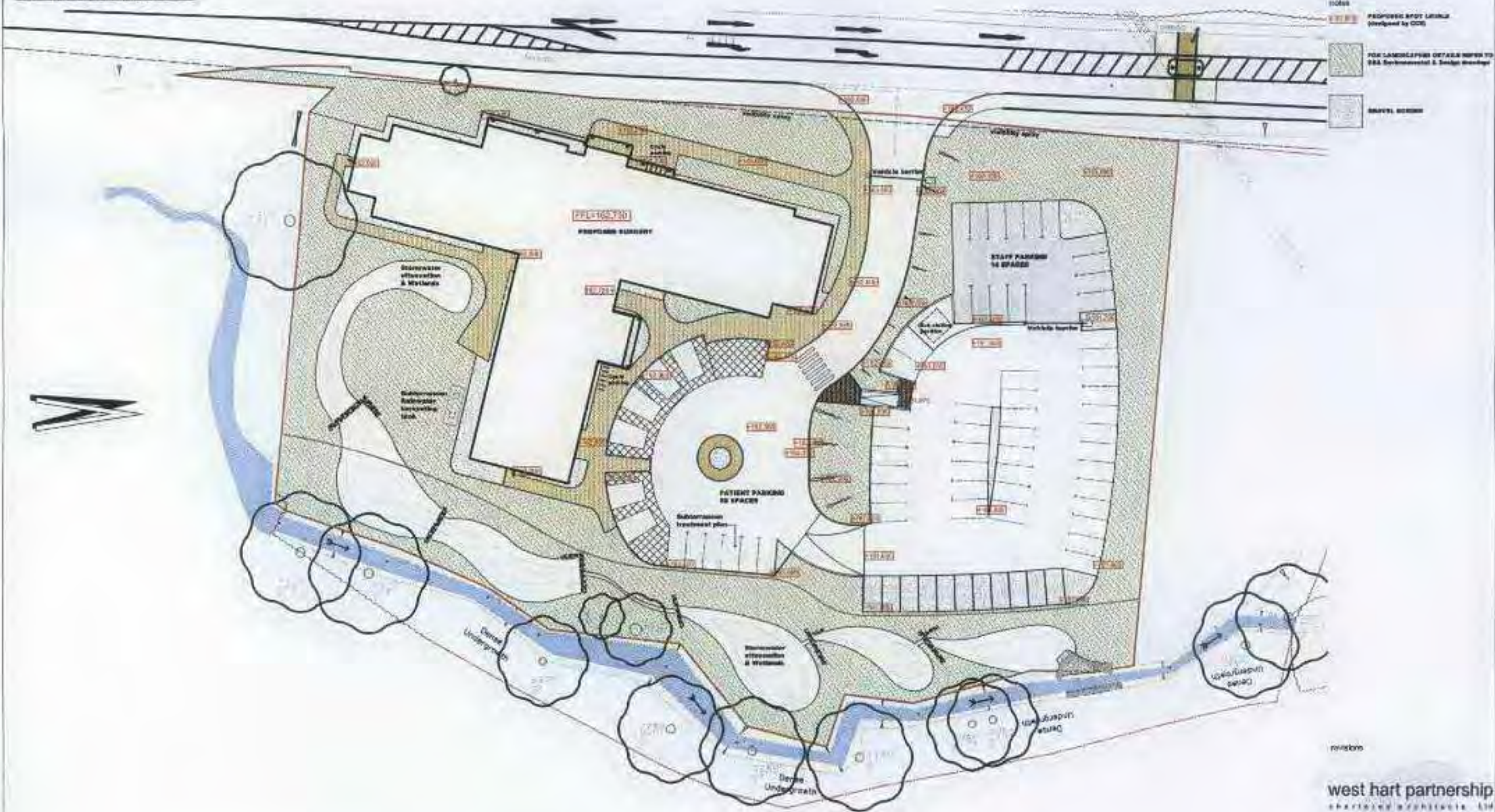


## Appendix A

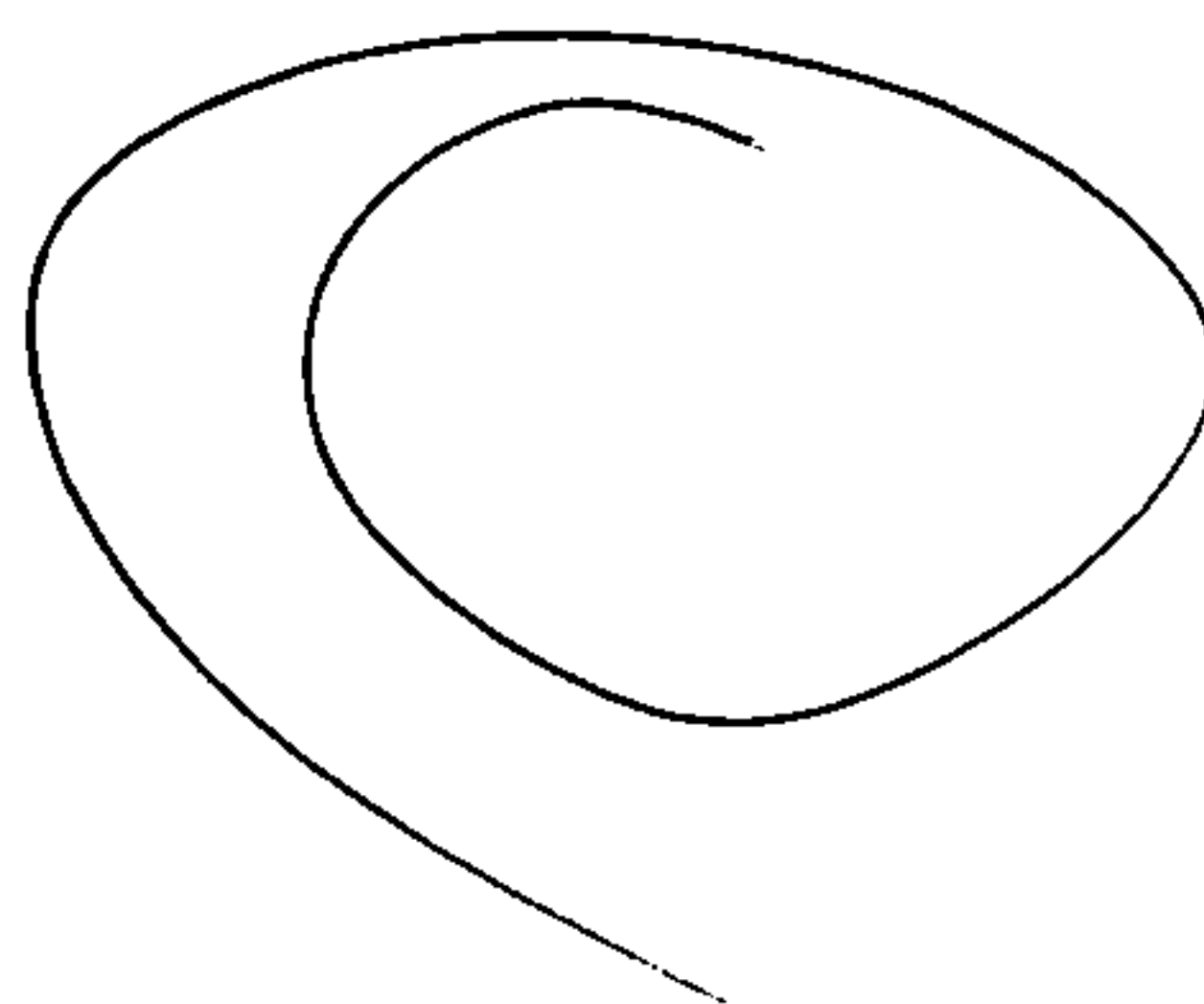


## PLANNING

west hart partnership  
chartered architects ltd

E: <a href="mailto:enquiries@kingshew.co.uk">enquiries@kingshew.co.uk</a> , tel: 01753 754 01753 754123 fax: 01753 754121 <a href="http://www.kingshew.co.uk">www.kingshew.co.uk</a>	
client THE SURGERY, KINGSTON project NEW HEALTH CENTRE title PROPOSED SITE PLAN dsg. no. <span style="float: right;">revision</span>	
<div style="display: flex; justify-content: space-between;"> <span style="font-size: 2em; font-weight: bold;">416-102</span> <span style="font-size: 2em; font-weight: bold;">H</span> </div>	
email 250@A1 date JMJ	date Sept 09 date JEH
<small>         Kingshew, Ltd. is a company limited by guarantee and is not a company as defined in the Companies Act 1985. It is a company limited by guarantee and is not a company as defined in the Companies Act 1985. It is a company limited by guarantee and is not a company as defined in the Companies Act 1985. It is a company limited by guarantee and is not a company as defined in the Companies Act 1985.       </small>	

## Appendix B



# A4111 Kington Speed Survey

Produced By DTS Consultancy (England) Ltd

All Speeds recordings are from Free Flowing vehicles.

Weather  
Sunny

Thu 24 July 2008  
1330-1530

Northbound				Southbound			
Speeds(mph)		Speeds(mph)		Speeds(mph)		Speeds(mph)	
1	41	51	49	1	34	51	44
2	41	52	50	2	35	52	44
3	42	53	50	3	35	53	44
4	42	54	50	4	36	54	45
5	42	55	50	5	36	55	45
6	42	56	50	6	36	56	45
7	42	57	50	7	36	57	45
8	42	58	50	8	37	58	45
9	42	59	50	9	37	59	45
10	42	60	50	10	37	60	46
11	42	61	50	11	37	61	46
12	43	62	51	12	37	62	46
13	43	63	51	13	38	63	47
14	44	64	51	14	38	64	47
15	44	65	51	15	38	65	47
16	44	66	51	16	38	66	47
17	44	67	51	17	38	67	47
18	45	68	51	18	39	68	47
19	45	69	51	19	39	69	48
20	45	70	51	20	39	70	48
21	45	71	51	21	39	71	48
22	45	72	51	22	39	72	48
23	45	73	52	23	39	73	48
24	45	74	52	24	39	74	48
25	46	75	52	25	39	75	48
26	46	76	52	26	39	76	48
27	46	77	52	27	39	77	49
28	46	78	52	28	40	78	49
29	47	79	52	29	40	79	49
30	47	80	52	30	41	80	49
31	47	81	52	31	41	81	49
32	47	82	53	32	41	82	50
33	47	83	53	33	41	83	51
34	47	84	53	34	42	84	51
35	48	85	53	35	42	85	51
36	48	86	53	36	42	86	51
37	48	87	53	37	42	87	51
38	48	88	54	38	42	88	51
39	48	89	54	39	42	89	52
40	48	90	54	40	43	90	52
41	49	91	54	41	43	91	52
42	49	92	54	42	43	92	52
43	49	93	54	43	43	93	52
44	49	94	54	44	43	94	53
45	49	95	54	45	44	95	53
46	49	96	55	46	44	96	53
47	49	97	55	47	44	97	53
48	49	98	55	48	44	98	53
49	49	99	55	49	44	99	53
50	49	100	55	50	44	100	55

ROAD SURFACE - DRY

Average Northbound	48.8	Average Southbound	44.3
85th%ile Northbound	53.0	85th%ile Southbound	51.0
% > Speed Limit Northbound	0.0	% > Speed Limit Southbound	0.0
% > 15mph over Speed Limit Northbound	0.0	% > 15mph over Speed Limit Southbound	0.0

SPEED  
LIMIT

60

SPEED  
LIMIT

60

# Kington ATC, A4111

Produced by DTS Consultancy (England) Ltd.

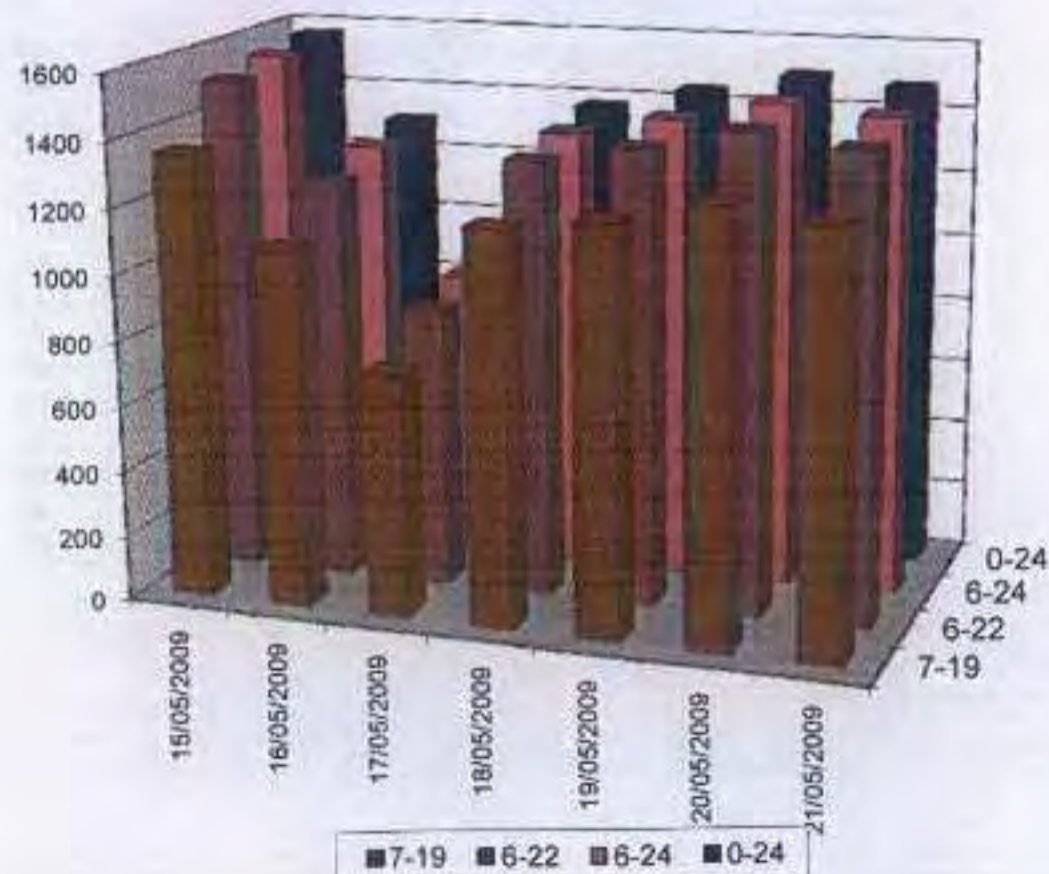
Channel 1 - Northbound

Vehicle Flow

Week 1

Hr Ending	15/05/2009 Friday	16/05/2009 Saturday	17/05/2009 Sunday	18/05/2009 Monday	19/05/2009 Tuesday	20/05/2009 Wednesday	21/05/2009 Thursday	5 Day Ave	7 Day Ave
1	1	5	8	2	3	5	2	3	3
2	0	2	8	2	2	2	2	2	3
3	1	1	4	2	1	1	1	1	2
4	0	5	2	1	2	0	2	1	2
5	5	2	3	5	7	7	7	6	5
6	17	11	0	15	15	12	16	15	12
7	22	22	6	28	26	23	21	24	21
8	73	15	9	52	68	68	75	67	51
9	130	55	24	131	121	129	130	128	103
10	102	65	40	78	102	101	114	99	86
11	114	98	55	105	81	95	81	95	90
12	83	133	88	100	84	77	79	85	89
13	107	83	95	94	95	109	84	98	95
14	108	124	82	99	95	102	94	100	101
15	130	103	78	100	98	111	90	108	101
16	141	113	94	117	125	127	131	128	121
17	128	103	94	111	136	140	146	132	123
18	133	123	51	152	143	158	145	146	129
19	109	77	57	59	85	89	94	87	81
20	85	53	54	49	52	61	53	56	55
21	48	43	29	39	31	33	26	35	35
22	28	19	25	15	40	25	49	31	29
23	17	28	19	22	22	19	26	21	22
24	12	23	10	4	10	10	13	10	12
7-19	1358	1092	745	1198	1233	1305	1263	1272	1171
6-22	1519	1229	859	1328	1382	1448	1412	1418	1311
6-24	1546	1280	889	1355	1414	1477	1451	1449	1345
0-24	1572	1308	911	1382	1444	1504	1481	1477	1371

Vehicle Flow (Channel 1)



Kington ATC, A4111

Produced by DTS Consultancy (England) Ltd.

Channel 1 - Northbound				Average Speed			Week 1
Hr Ending	15/05/2009 Friday	16/05/2009 Saturday	17/05/2009 Sunday	18/05/2009 Monday	19/05/2009 Tuesday	20/05/2009 Wednesday	21/05/2009 Thursday
1	58.0	51.0	45.5	54.2	50.5	44.0	43.0
2	-	53.0	47.4	53.0	50.5	53.0	53.0
3	48.0	43.0	49.2	43.0	15.5	43.0	15.5
4	-	50.0	53.0	58.0	48.0	-	48.0
5	46.0	56.8	48.0	50.5	47.3	49.1	47.3
6	42.1	49.8	-	44.7	42.8	47.2	42.8
7	52.2	47.8	46.3	46.7	48.9	46.5	48.7
8	45.2	48.0	44.7	47.2	45.7	46.1	44.9
9	44.6	45.1	49.7	44.6	46.3	43.4	45.9
10	42.5	45.4	44.8	45.4	41.7	45.7	42.6
11	42.1	41.9	45.5	41.3	42.4	44.8	43.6
12	43.7	41.9	45.0	41.4	43.8	43.4	42.8
13	42.8	45.9	44.2	43.6	41.8	42.8	42.3
14	43.9	45.0	44.2	43.2	42.2	42.1	42.7
15	41.4	43.9	42.7	44.9	43.4	41.5	43.8
16	44.5	46.0	43.3	43.1	43.5	44.0	43.3
17	45.1	45.1	46.8	45.0	45.0	44.9	45.5
18	43.8	42.5	46.0	46.1	45.6	43.7	45.5
19	45.2	44.6	47.4	45.0	47.3	46.6	46.9
20	48.2	46.6	48.7	48.6	47.4	44.8	48.8
21	46.3	44.9	49.6	49.6	46.4	49.3	46.7
22	47.0	44.6	50.6	50.5	50.1	47.2	47.1
23	48.1	46.8	46.6	48.5	48.7	44.8	49.9
24	48.2	48.3	46.0	40.5	50.0	48.5	48.4
10-12	42.8	41.9	45.2	41.4	43.1	44.2	43.2
14-18	43.0	45.0	43.1	43.9	43.4	42.9	43.5
0-24	44.2	44.6	45.7	44.7	44.7	44.3	44.8

7 Day Ave	44.7
-----------	------

85th Percentile

Hr Ending	15/05/2009 Friday	16/05/2009 Saturday	17/05/2009 Sunday	18/05/2009 Monday	19/05/2009 Tuesday	20/05/2009 Wednesday	21/05/2009 Thursday
1	58.7	53.3	53.3	65.9	66.1	66.0	53.0
2	-	53.6	53.9	58.1	53.5	58.4	53.3
3	48.5	43.6	59.0	43.6	15.7	43.1	16.3
4	-	58.3	53.4	58.7	53.9	-	53.3
5	53.6	65.8	53.3	66.4	48.7	66.2	48.2
6	53.3	53.8	-	48.8	48.5	58.9	48.5
7	65.8	53.8	53.2	53.0	53.4	58.5	53.3
8	53.8	58.6	48.2	53.5	53.1	58.1	53.3
9	53.0	54.0	58.6	48.9	53.8	53.8	53.0
10	48.8	53.9	53.4	53.4	53.5	53.4	53.5
11	53.8	53.2	53.4	48.7	53.8	53.5	53.2
12	48.7	48.7	53.7	48.5	53.6	53.5	53.9
13	48.0	54.0	53.3	48.5	48.8	48.2	48.6
14	53.4	53.2	53.6	48.5	53.0	48.3	53.8
15	48.9	48.5	53.2	48.4	53.2	48.1	53.9
16	53.8	53.1	53.2	53.4	53.1	53.6	53.3
17	53.4	54.0	53.6	48.3	53.1	53.2	53.5
18	54.0	53.7	53.1	53.1	53.3	53.9	53.1
19	53.9	53.0	53.5	53.2	58.1	53.1	53.6
20	53.1	53.6	53.9	59.0	58.0	53.4	58.4
21	58.9	53.1	53.3	58.1	58.5	58.3	59.0
22	53.4	53.1	66.3	58.4	58.7	53.9	58.1
23	53.5	66.3	53.4	53.4	66.0	53.8	66.4
24	58.8	58.3	53.3	48.5	66.3	53.3	66.1
10-12	53.1	53.0	53.9	48.2	53.1	53.7	53.3
14-18	53.6	53.3	53.6	53.5	53.2	48.3	53.1
0-24	53.5	53.4	53.6	53.3	53.7	53.1	53.5

Overall 85th	52.3
--------------	------

# Kington ATC, A4111

Produced by DTS Consultancy (England) Ltd.

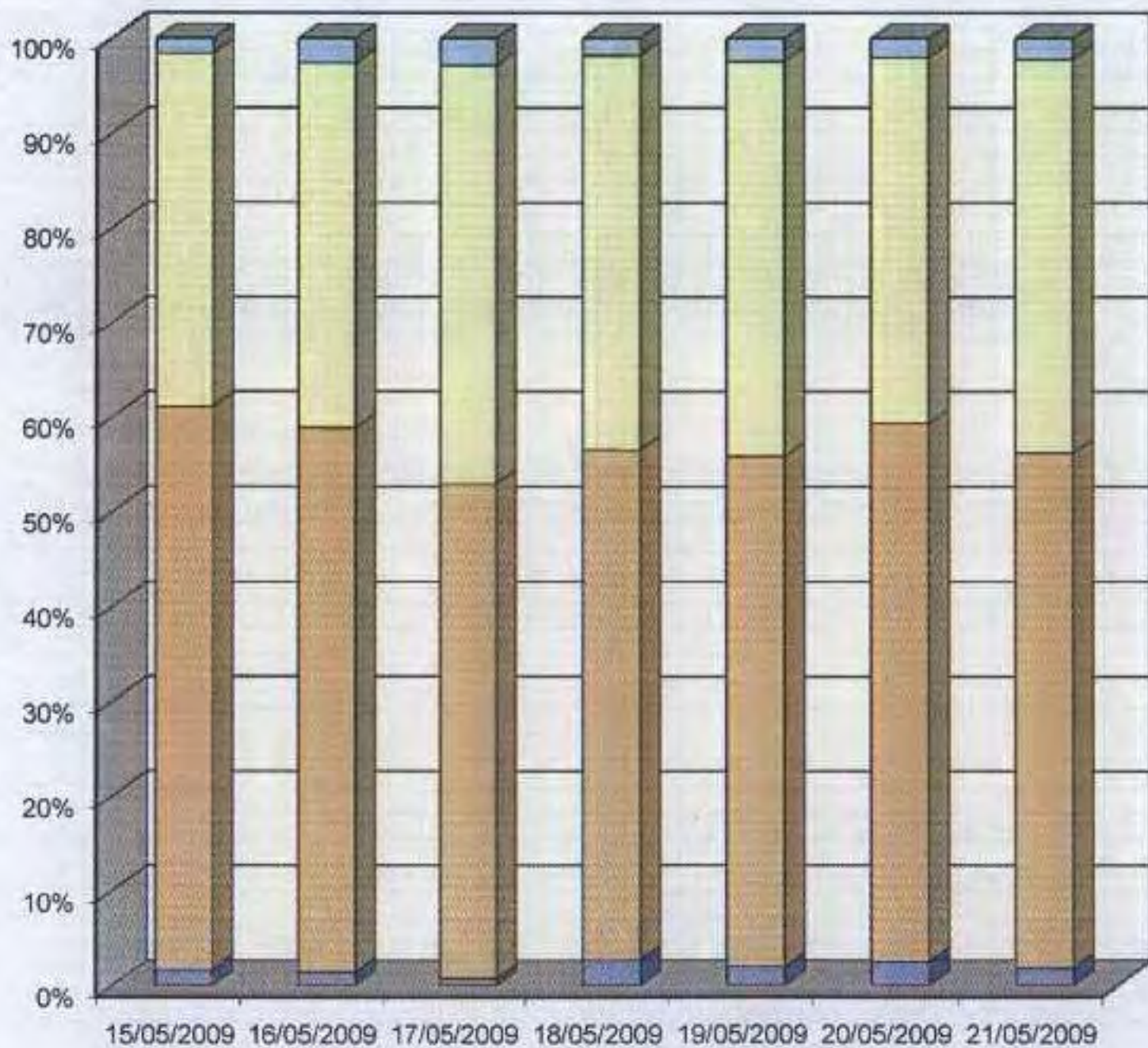
Channel 1 - Northbound

Speed Summary

Week 1

Speed (MPH)	15/05/2009 Friday	16/05/2009 Saturday	17/05/2009 Sunday	18/05/2009 Monday	19/05/2009 Tuesday	20/05/2009 Wednesday	21/05/2009 Thursday
0-30	27	19	7	38	29	39	28
31-45	934	750	478	744	778	854	805
46-60	588	503	402	575	602	581	615
61-120	25	34	26	25	35	30	33
<b>TOTAL</b>	<b>1572</b>	<b>1306</b>	<b>911</b>	<b>1382</b>	<b>1444</b>	<b>1504</b>	<b>1481</b>

Speed Summary (MPH)



■ 0-30 ■ 31-45 □ 46-60 ■ 61-120

# Kington ATC, A4111

Produced by DTS Consultancy (England) Ltd.

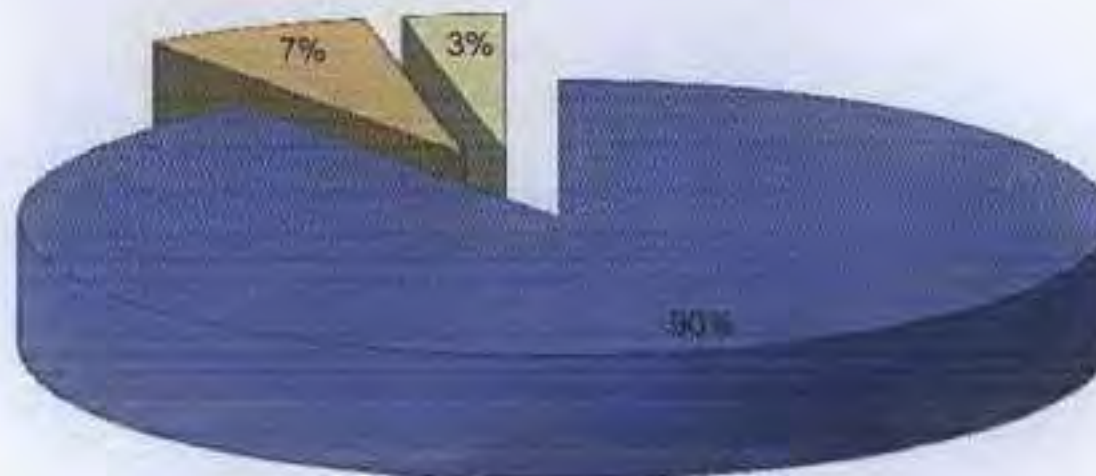
Channel 1 - Northbound

Vehicle Class

Week 1

Classes Day / Time	Car / LGV / Caravan - 1	OGV1 / Bus - 2,3,5,6,7,12	OGV2 - 4,8,9,10,11,13	TOTAL - 1-13
15/05/2009				
7-19	1203	109	46	1358
8-22	1359	112	48	1519
8-24	1391	112	49	1548
0-24	1401	115	56	1572
16/05/2009				
7-19	1061	25	6	1092
8-22	1183	28	8	1229
8-24	1201	28	8	1280
0-24	1201	30	15	1306
17/05/2009				
7-19	728	15	2	745
8-22	841	18	2	859
8-24	859	17	2	888
0-24	891	18	2	911
18/05/2009				
7-19	1055	112	31	1198
8-22	1176	121	38	1329
8-24	1191	122	38	1355
0-24	1214	125	43	1382
19/05/2009				
7-19	1095	97	40	1233
8-22	1238	108	48	1382
8-24	1259	108	48	1414
0-24	1271	114	59	1444
20/05/2009				
7-19	1143	118	43	1308
8-22	1275	123	48	1448
8-24	1299	125	48	1477
0-24	1320	132	52	1504
21/05/2009				
7-19	1114	106	43	1263
8-22	1243	113	51	1412
8-24	1265	115	51	1451
0-24	1296	121	64	1481
Average				
7-19	1057	83	30	1171
8-22	1185	88	34	1311
8-24	1222	90	35	1345
0-24	1236	94	42	1371

Total Vehicle Class Distribution



# Kington ATC, A4111

Produced by DTS Consultancy (England) Ltd.

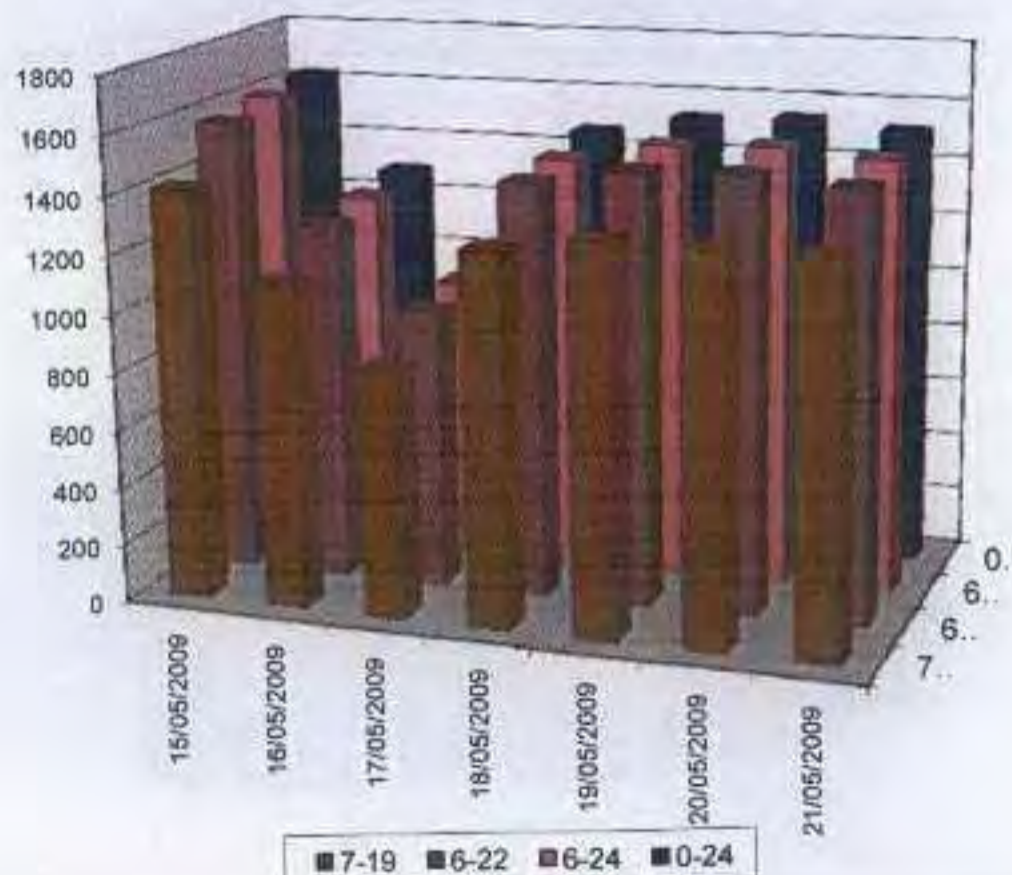
Channel 2 - Southbound

Vehicle Flow

Week 1

Hr Ending	15/05/2009 Friday	16/05/2009 Saturday	17/05/2009 Sunday	18/05/2009 Monday	19/05/2009 Tuesday	20/05/2009 Wednesday	21/05/2009 Thursday	5 Day Ave	7 Day Ave
1	3	6	9	2	2	1	2	2	4
2	0	3	4	1	5	2	5	3	3
3	1	4	3	1	5	2	4	3	3
4	1	0	3	4	1	2	2	2	2
5	3	5	2	9	5	5	3	5	5
6	15	6	2	12	7	18	7	11	9
7	51	22	11	42	47	54	42	47	38
8	93	32	9	97	88	103	97	96	74
9	127	70	12	120	116	125	111	120	97
10	117	111	57	109	117	124	123	118	108
11	119	138	97	116	99	108	92	107	110
12	112	136	88	97	115	116	102	108	109
13	118	116	105	105	131	98	133	117	115
14	125	107	85	101	98	91	103	104	101
15	107	75	89	108	120	122	136	119	108
16	135	68	87	100	103	121	111	114	104
17	162	87	79	120	137	129	127	135	120
18	132	79	76	125	131	120	124	126	112
19	69	100	67	77	75	64	66	70	74
20	59	55	49	48	55	49	54	53	53
21	36	24	33	38	28	32	23	31	31
22	13	19	23	23	22	32	22	22	22
23	17	19	12	10	12	20	15	15	15
24	12	8	4	2	9	7	10	6	7
7-19	1416	1119	651	1275	1330	1321	1325	1333	1234
6-22	1575	1239	967	1426	1482	1488	1466	1487	1376
6-24	1604	1286	883	1438	1503	1515	1491	1510	1400
0-24	1627	1290	1006	1467	1628	1543	1514	1536	1425

Vehicle Flow (Channel 2)



Kington ATC, A4111

Produced by DTS Consultancy (England) Ltd.

Channel 2 - Southbound				Average Speed			Week 1
Hr Ending	15/05/2009 Friday	16/05/2009 Saturday	17/05/2009 Sunday	18/05/2009 Monday	19/05/2009 Tuesday	20/05/2009 Wednesday	21/05/2009 Thursday
1	53.8	58.0	48.0	50.5	48.0	43.0	48.0
2	-	46.3	48.0	48.0	46.0	48.0	46.0
3	15.5	46.8	53.0	53.0	45.0	53.0	45.5
4	48.0	-	53.8	52.4	43.0	50.5	43.0
5	53.0	62.0	54.2	40.5	47.0	49.0	44.7
6	46.8	52.2	49.2	45.3	52.6	49.1	52.6
7	46.2	44.1	47.1	47.9	47.9	44.2	46.3
8	46.4	46.4	49.1	45.1	46.5	46.8	46.0
9	47.3	46.5	46.5	45.0	46.3	47.3	46.3
10	45.8	47.2	47.1	44.3	44.4	46.8	43.8
11	44.5	46.3	46.9	44.7	44.9	44.2	45.2
12	44.7	47.8	47.5	44.2	44.5	46.2	43.9
13	43.7	45.3	47.6	44.7	43.6	44.7	43.2
14	45.4	47.8	47.5	46.2	46.6	45.8	46.1
15	46.2	47.2	48.8	45.2	44.8	44.7	44.7
16	45.6	45.9	48.0	45.3	45.7	47.7	45.6
17	48.0	47.3	48.3	46.1	47.8	47.7	47.6
18	47.6	47.0	48.5	48.8	49.0	49.1	48.7
19	49.3	48.4	49.1	51.0	48.9	50.9	49.2
20	46.0	50.7	52.2	50.6	49.3	50.0	49.7
21	47.5	45.5	49.8	49.4	49.1	49.7	49.3
22	49.9	49.3	46.4	48.0	49.5	48.5	52.4
23	48.3	46.3	47.6	44.5	53.8	45.8	53.8
24	50.1	48.6	53.0	56.8	49.7	49.1	50.5
10-12	44.6	47.0	47.2	44.4	44.7	45.2	44.5
14-16	45.9	46.5	48.4	45.3	45.2	46.2	45.1
0-24	46.3	47.2	48.2	46.2	46.4	46.9	46.2
7 Day Ave						46.8	

85th Percentile							
Hr Ending	15/05/2009 Friday	16/05/2009 Saturday	17/05/2009 Sunday	18/05/2009 Monday	19/05/2009 Tuesday	20/05/2009 Wednesday	21/05/2009 Thursday
1	65.7	76.1	58.4	53.7	53.4	43.2	53.3
2	-	53.5	53.5	48.3	58.7	48.2	58.3
3	16.5	58.7	58.1	53.4	53.1	53.5	53.2
4	48.1	-	65.6	65.9	43.8	58.4	43.3
5	58.0	101.4	65.7	53.9	53.7	53.1	48.0
6	58.3	75.9	65.5	65.6	66.0	65.8	66.2
7	58.5	53.3	53.7	66.1	58.2	58.6	58.8
8	53.9	58.3	53.5	53.3	58.2	53.8	53.3
9	53.5	53.2	53.6	53.1	53.3	53.5	53.7
10	53.4	53.5	58.2	53.2	53.8	58.2	53.4
11	53.8	53.2	53.5	53.1	53.1	53.9	53.8
12	53.8	53.6	53.7	53.4	53.5	53.4	58.7
13	53.7	53.4	58.8	54.0	53.8	53.3	53.4
14	58.7	58.9	53.4	53.5	53.8	53.8	53.1
15	59.0	58.5	58.9	53.5	53.3	53.2	53.4
16	53.3	53.2	58.7	54.0	54.0	58.4	53.3
17	58.5	58.7	58.1	53.2	58.8	53.2	58.7
18	53.4	53.7	53.6	58.4	58.7	58.9	58.3
19	58.7	53.6	58.7	58.4	58.9	58.6	58.8
20	53.2	66.3	58.0	58.3	58.9	58.4	58.2
21	53.4	53.2	58.4	58.5	58.4	58.4	58.6
22	58.5	58.8	53.4	58.1	53.1	58.9	66.5
23	53.8	58.2	53.3	48.5	66.5	53.6	65.7
24	53.5	54.0	59.0	66.5	58.8	66.4	58.9
10-12	53.4	53.1	53.8	53.0	53.0	53.5	53.1
14-16	53.2	53.1	58.7	52.0	53.4	53.3	53.8
0-24	53.2	53.8	58.4	53.7	53.0	53.9	53.6
Overall 85th						53.2	

# Kington ATC, A4111

Produced by DTS Consultancy (England) Ltd.

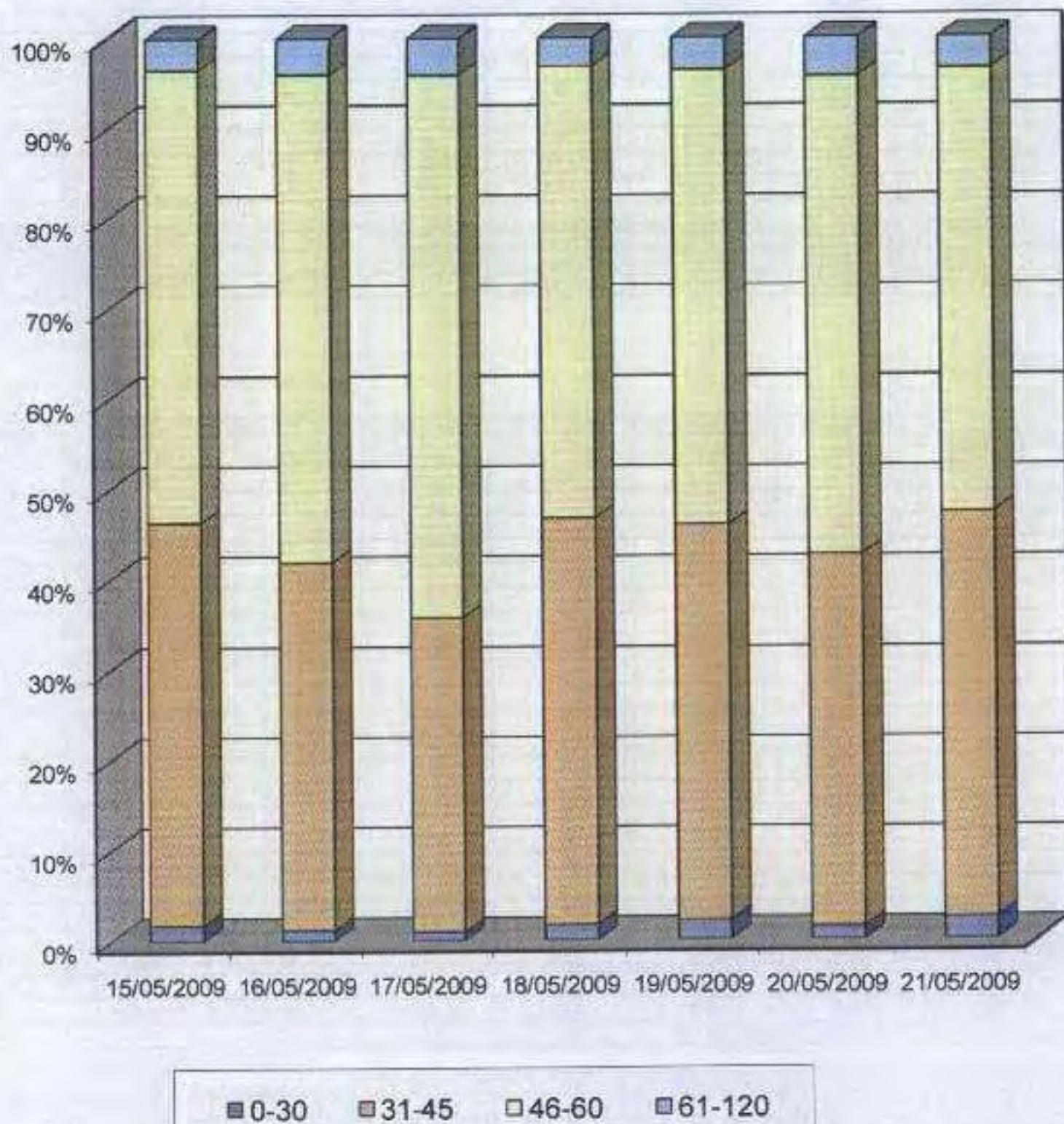
Channel 2 - Southbound

Speed Summary

Week 1

Speed (MPH)	15/05/2009 Friday	16/05/2009 Saturday	17/05/2009 Sunday	18/05/2009 Monday	19/05/2009 Tuesday	20/05/2009 Wednesday	21/05/2009 Thursday
0-30	29	16	10	26	34	23	38
31-45	726	525	350	661	670	636	680
46-60	815	697	805	734	769	818	743
61-120	57	52	41	46	55	68	53
<b>TOTAL</b>	<b>1627</b>	<b>1290</b>	<b>1006</b>	<b>1467</b>	<b>1528</b>	<b>1543</b>	<b>1514</b>

Speed Summary (MPH)



# Kington ATC, A4111

Produced by DTS Consultancy (England) Ltd.

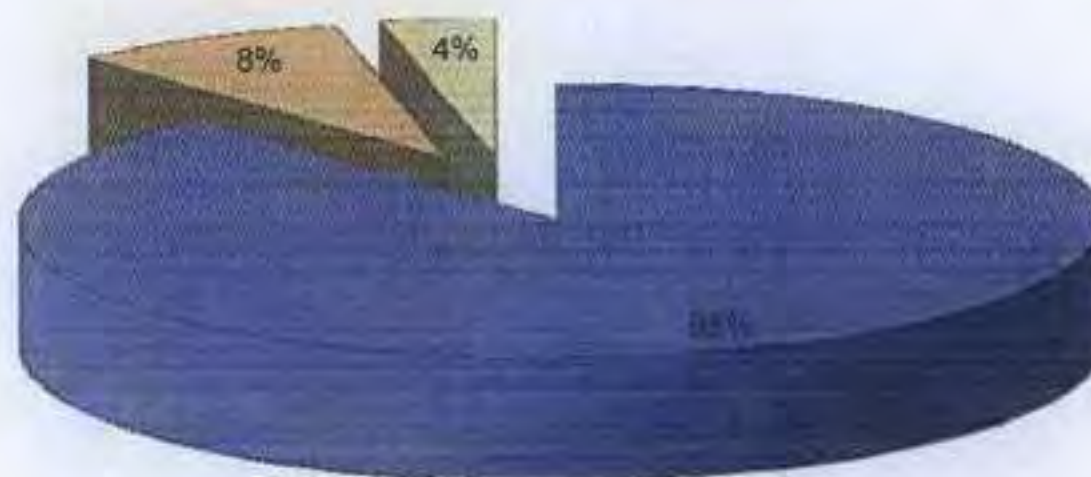
Channel 2 - Southbound

Vehicle Class

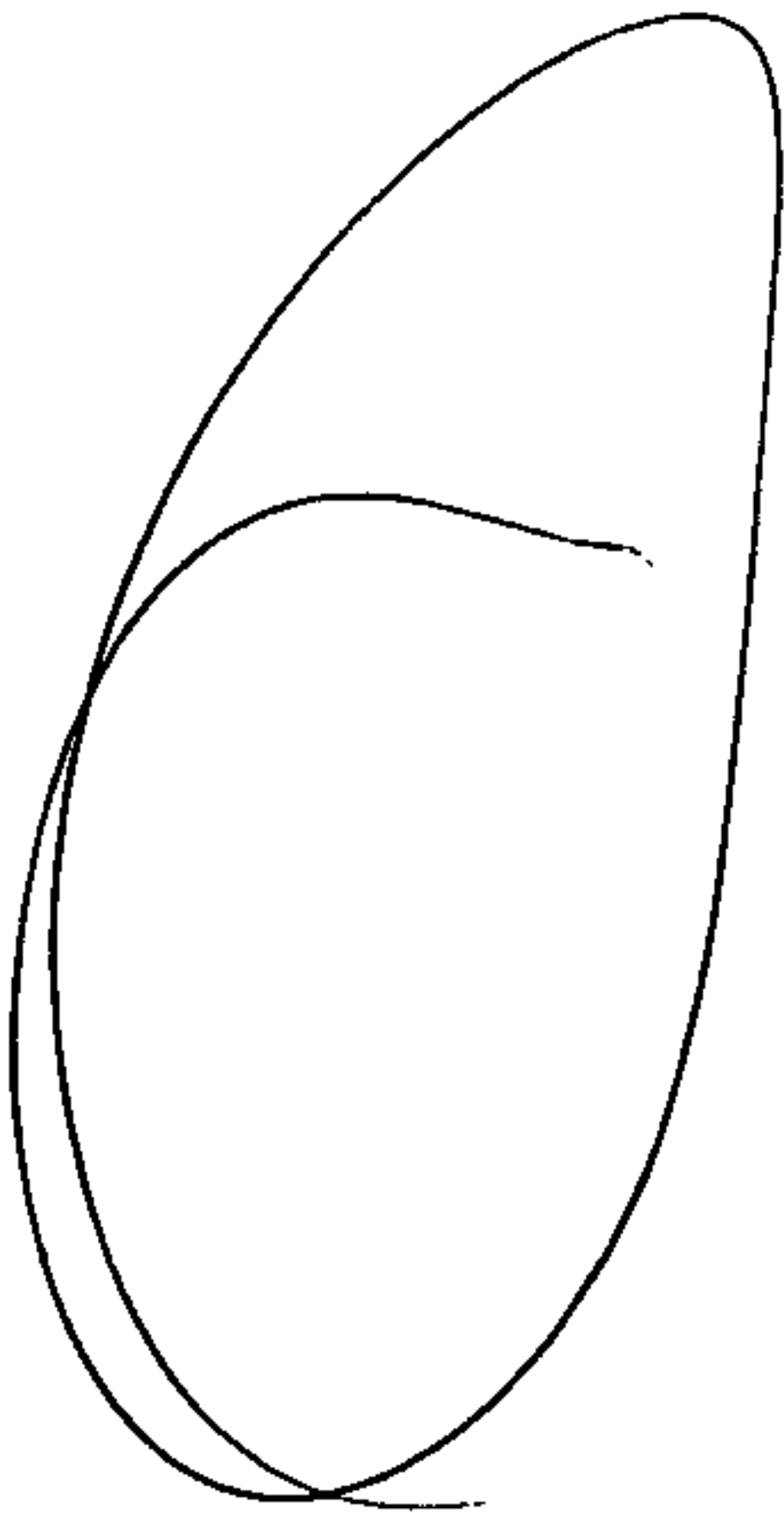
Week 1

Classes Day / Time	Car / LGV / Caravan - 1	OGV1 / Bus - 2,3,5,6,7,12	OGV2 - 4,8,9,10,11,13	TOTAL - 1-13
15/05/2009				
7-19	1217	139	60	1416
8-22	1351	153	71	1575
8-24	1379	153	72	1604
0-24	1395	154	78	1627
16/05/2009				
7-19	1071	40	8	1119
8-22	1178	46	15	1239
8-24	1195	46	15	1266
0-24	1225	48	17	1290
17/05/2009				
7-19	828	24	1	851
8-22	840	26	1	867
8-24	853	26	1	883
0-24	878	27	1	1006
18/05/2009				
7-19	1087	140	48	1275
8-22	1216	152	58	1426
8-24	1229	152	58	1438
0-24	1252	152	63	1467
19/05/2009				
7-19	1157	125	48	1330
8-22	1259	138	58	1462
8-24	1265	140	58	1503
0-24	1320	148	62	1528
20/05/2009				
7-19	1151	130	40	1321
8-22	1290	145	53	1488
8-24	1290	147	54	1515
0-24	1335	150	58	1543
21/05/2009				
7-19	1153	125	47	1325
8-22	1271	137	58	1466
8-24	1278	136	58	1491
0-24	1307	145	62	1514
Average				
7-19	1095	103	38	1234
8-22	1219	114	45	1378
8-24	1230	115	45	1400
0-24	1259	117	49	1425

**Total Vehicle Class Distribution**



**Appendix C**



**KINGTON, HEREFORDSHIRE**  
**GHOST ISLAND RIGHT TURN LANE**  
**ROAD SAFETY AUDIT STAGE 1**

**TMS 8705**

---

**KINGTON, HEREFORDSHIRE**  
**GHOST ISLAND RIGHT TURN LANE**  
**ROAD SAFETY AUDIT STAGE 1**

---

**1. INTRODUCTION**

- 1.1 This report describes a Stage 1 Road Safety Audit carried out on a proposed ghost island right turn lane facility, on behalf of David Tucker Associates. The audit was carried out on 1<sup>st</sup> October 2009 in the offices of TMS Consultancy.
- 1.2 The audit team members were as follows:-
- Darren Newbold, BSc (Hons), MIHT;  
Engineer, TMS Consultancy
- Harinder Aulak, BSc (Hons), IEng, FIHIE, MCIT, MILT  
Senior Engineer, TMS Consultancy
- 1.3 The audit comprised an examination of the drawing and other information relating to the scheme supplied by the design office (as listed in **Appendix A**). The site was visited by the Audit Team on 1<sup>st</sup> October 2009. The weather was fine and dry. Traffic flows were light. Pedestrian and cycle flows were light.
- 1.4 The terms of reference of the audit are as described in HD 19/03. The team has examined and reported only on the road safety implications of the scheme as presented and has not examined or verified the compliance of the design to any other criteria.
- 1.5 All of the problems described in this report are considered by the audit team to require action in order to improve the safety of the scheme and minimise accident occurrence.
- 1.6 The scheme consists of a proposed ghost island right turn lane facility on the A4111 to serve access to a new medical centre, together with a pedestrian crossing facility on the major road.

---

## **2. ITEMS RESULTING FROM THIS STAGE 1 AUDIT**

### **2.1 PROBLEM**

***Location – Pedestrian crossing facility on major road***

***Summary: Lack of lighting could result in accidents at crossing.***

The A4111 is currently unlit. The provision of a pedestrian crossing facility (which appears controlled) is not recommended on unlit roads. This is because drivers may fail to perceive the road layout and pedestrians attempting to cross during the red man phase may not be visible to drivers. There is also the risk of the refuge island in the middle of the road being hit by vehicles, resulting in loss of control type accidents.

### **RECOMMENDATION**

If the pedestrian crossing facility is to be controlled, lighting should be provided. A street lighting engineer should be consulted as to whether the crossing alone could be lit, or whether the whole of the ghost island would require lighting.

---

**3. AUDIT TEAM STATEMENT**

I certify that the terms of reference of the audit are as described in HD 19/03.

**AUDIT TEAM LEADER:**

Darren Newbold, BSc (Hons), MIHT;  
Engineer, TMS Consultancy

signed..........

date.....6<sup>th</sup> October 2009.....

**AUDIT TEAM MEMBER:**

Harminder Aulak, BSc (Hons), IEng, FIHIE, MCIT, MILT;  
Senior Engineer, TMS Consultancy

TMS Consultancy  
Vanguard Centre  
University of Warwick Science Park  
Sir William Lyons Road  
Coventry  
CV4 7EZ

Tel. 024 76 690900  
Fax. 024 76 690274  
Email: [info@tmsconsultancy.co.uk](mailto:info@tmsconsultancy.co.uk)  
Website: [www.tmsconsultancy.co.uk](http://www.tmsconsultancy.co.uk)

---

## **APPENDIX A**

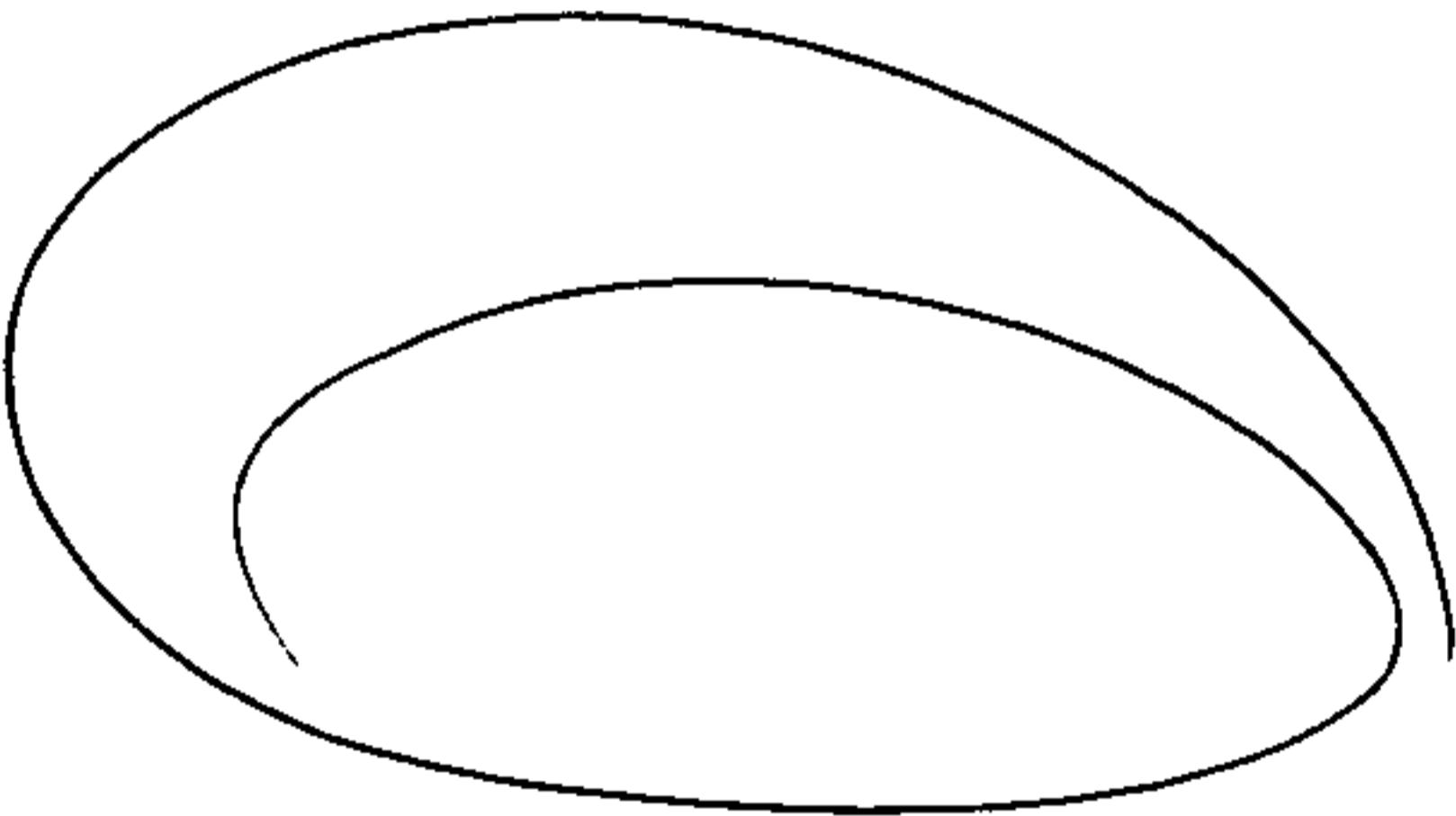
### **List of Drawings Examined:**

- Drawing No. 10109-06 Rev A

### **Other Information Provided:**

- Transport Assessment (prepared by David Tucker Associates)
- Site Location Plan

**Appendix D**



# Contributory Factors Report Summary - A4111 JW A44 Kington Area

Date Range: 15/02/2008 - 15/02/2008  
Grid Coordinate Range: 330298,255577 - 330298,255577  
Query Conditions: 01/01/2003 - 31/05/2008      Search Conditions: select \* from accident  
where (easting between 330196.8 and 330489.5 and northing between

## Accident Severity

	2008	Total
Fatal	1	1
Total	1	1

## Casualty Severity

	2008	Total
Fatal	1	1
Total	1	1

## Casualty KSI

	2008	Total
Adult KSI	1	1
Total	1	1

A4111 JW A44 Kington Area

Query Conditions: 01/01/2003 - 31/05/2008      Search Conditions: select \* from  
accident where (easting between 330196.8 and 330489.5 and northing between

Accident Reference:08EA87071      Fatal      A 4111 KINGTON OUTSIDE 'GREENACRES'      Accident 1 of 1

Friday 15/02/2008 18:50      Grid Coords 330298/255577      Daylight Dark/no lights  
Surface Dry      Weather Fine without high winds

Contributory Factors

	Participant	Confidence	Did a police officer attend?
607 Inexperience with vehicle type (Driver/Rider - Behaviour)	Vehicle 001	Possible	Yes
602 Careless/Reckless (Driver/Rider - Behaviour)	Vehicle 001	Possible	
605 Inexperienced or learner driver/rider (Driver/Rider - Behaviour)	Vehicle 001	Very likely	
410 Loss of control (Driver/Rider - Error)	Vehicle 001	Very likely	

Accident Description

DR V1 LOSES CONTROL EXITING LH BEND, V1 LEAVES CW TO NS AND OVERTURNS COMING TO REST IN NS DRIVEWAY.

Vehicles

1 Car      Going ahead left hand bend      Skid & O/T      Not provided      N to SE      Male Age 17

Casualties

1 Driver or Rider      Fatal      Vehicle no.1      Male 17