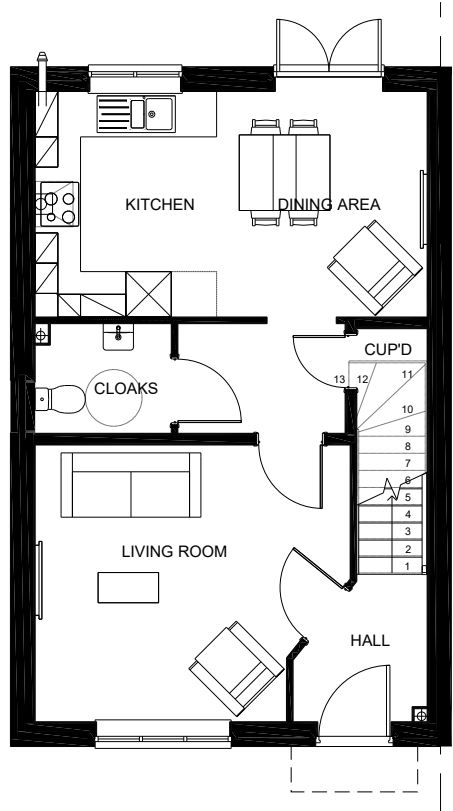


Notes:
The contractor must verify all dimensions on site before commencing any work on shop drawings, do not scale from this drawing
McBains Ltd copyright

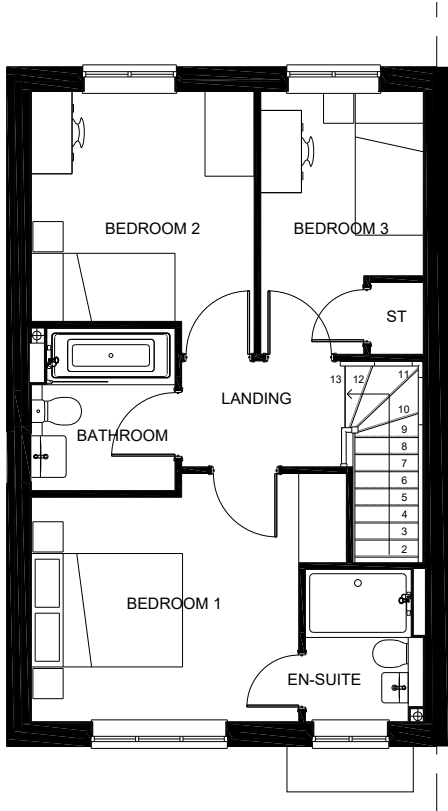
BIM Transmittal Disclaimer
McBains Ltd makes no express or implied warranties with respect to the character, function, or capabilities of the data (inclusive of 3rd party data incorporated within), or the suitability of the data for any particular purpose beyond those originally intended by McBains Ltd. Please refer to our standard terms and conditions for further details.

NOTE:
ALL BATHROOMS & ENSUITE WINDOWS TO HAVE OBSCURED GLASS.

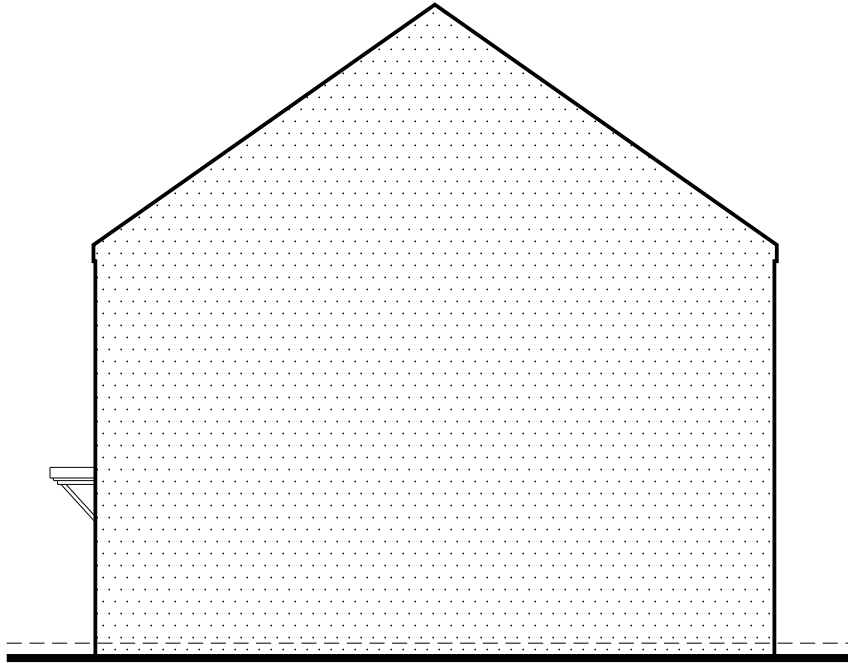
REFER TO EXTERNAL MATERIALS PLAN FOR SPECIFIC MATERIALS, WINDOWS COLOURS AND DOOR COLOURS



GROUND FLOOR PLAN



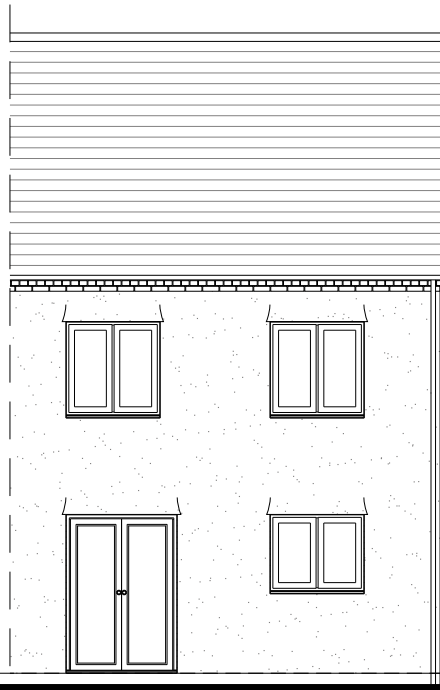
FIRST FLOOR PLAN



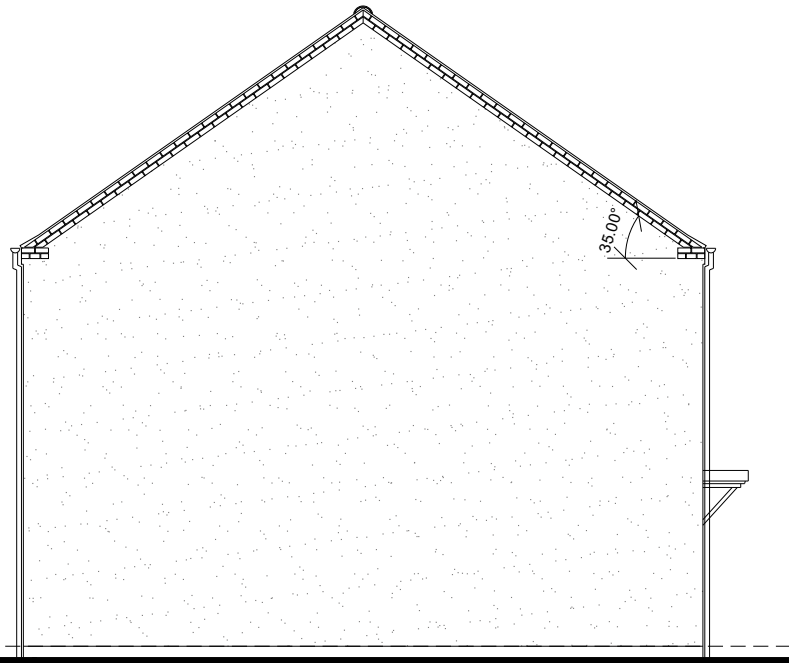
SECTION



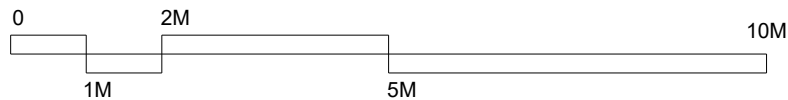
FRONT ELEVATION



REAR ELEVATION



LEFT ELEVATION



P1 Issued for planning 11-02-2022

| Revision | Amendment | Date |
|------------|--------------|-------------|
| JP/VS | FC/SC | POR |
| Drawn by | Reviewed by | Approved by |
| 60738 | JUN 2021 | 1:100 @ A3 |
| MCB Number | Date created | Scale @ A3 |

McBains

McBains Ltd
5th Fl, 26 Finsbury Square London EC2A 1DS
+44 (0)20 7786 7900 mcbains.co.uk

Client
Vistry Group

Project
LAND AT LEADON WAY
LEDBURY

Drawing Title
HOUSETYPE PLANS & ELEVATIONS
X305
PLOTS 60 as shown
PLOTS --- handed

ARCHITECTURE

| Drawing / Document Reference | Status |
|---|----------------------|
| LLWVG - MCB - ZZ - ZZ - DR - A - 0134 | D5 - P1 |
| Project Idem Originator Zone Level Type Discipline Number | Suitability Revision |