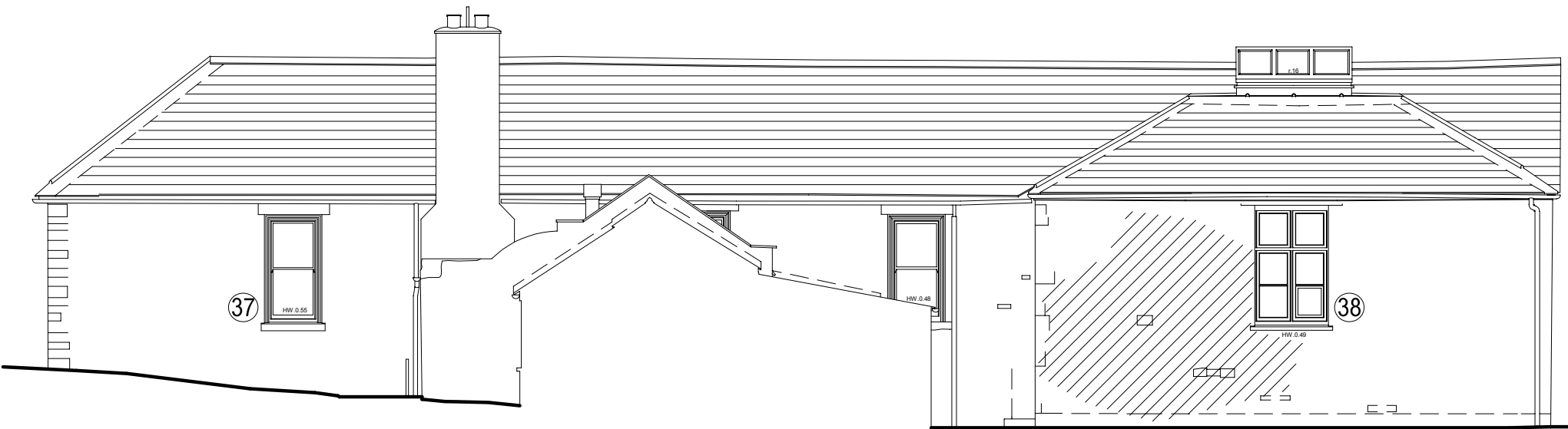


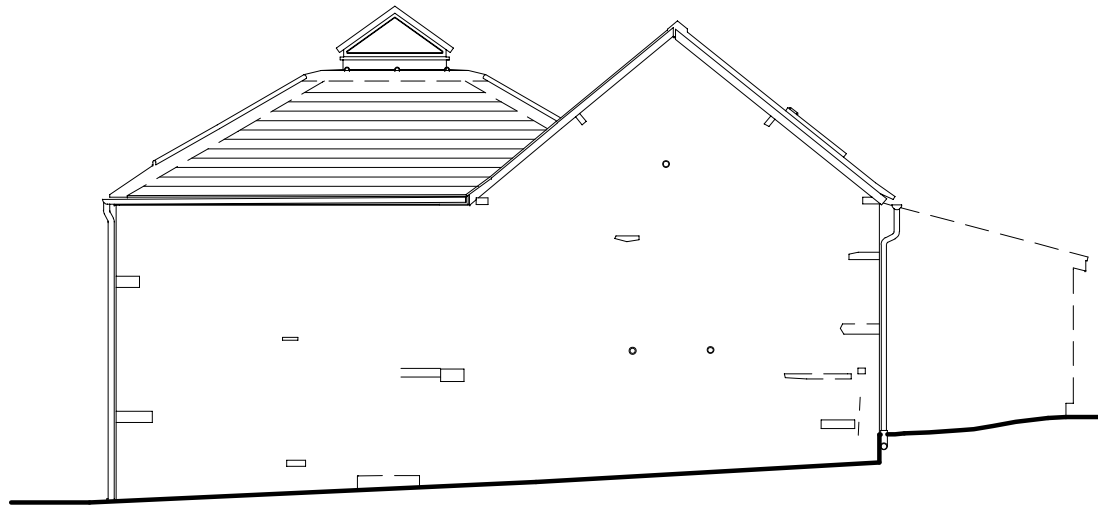
no. 12 north west elevation



no. 13 south west elevation



no. 14 south east elevation



no. 15 north east elevation

- 21 new low profile metal rooflights over (The Rooflight Company web: <http://www.the-rooflightcompany.co.uk/the-conservation-rooflight-product>)

28 existing classroom extension to be reclad using a planed vertical board

29 existing windows replaced with new double-glazed, powder-coated aluminium frame windows

35 new HW framed, ledged and braced vertical boarded door
- 36 existing roof finish replaced with corrugated/ profile metal sheet roofing system

37 existing single-glazed, sliding sash timber windows to be repaired, overhauled and upgraded to full working order and redecorated

38 single glazed timber casement windows to be repaired, overhauled and upgraded to full working order and redecorated
- isolated patch repointing, using a 1:2.5 NHL 2.5 naturally hydraulic lime mortar mix using purpose made / proper pointing tools that fit the joint width to ensure good compaction and remove all mortar droppings immediately

plaster repair to decorative cornice using a 1:2.5 NHL 2.5 naturally hydraulic lime mortar mix

masonry to be cleaned by specialist contractor to remove organic growth following removal of dead creepers/ root systems using DOFF/JOSS/TORC cleaning system

all roofs, ledges, gutters and valleys to be cleaned and all moss/ lichen growth to be removed and area treated using ROUNDUP PRO VANTAGE

B	04/03/19	CgH	Drawing amended to suit revised layout
A	29/07/17	JLL	Annotation added
Rev	Date	Drawn	Description
<div><div><div>ctdarchitects</div><div><div>Client</div><div>UNIQUE VENUES LTD</div></div></div><div><div><div>Clerk Bank House Clerk Bank LEEK Staffordshire ST13 5HE</div><div>t : 01538 373477 f : 01538 386503</div><div>e : <a href="mailto:info@ctdarchitects.co.uk">info@ctdarchitects.co.uk</a> w : <a href="http://www.ctdarchitects.co.uk">www.ctdarchitects.co.uk</a></div></div><div><div><div>Project</div><div>Bredenbury Court HEREFORDSHIRE</div></div><div><div>Title</div><div>Accommodation Block Elevations 'as proposed'</div></div></div><div><div><div>ctd architects © 2019</div><div><ul style="list-style-type: none"><li>• This drawing is copyright.</li><li>• All dimensions to be checked on site before proceeding.</li><li>• Contractor must notify the architect of any discrepancies before proceeding.</li><li>• Contractor to check/adjust dimensions of new work to suit existing conditions. Do not assume existing structure or details are plumb, square or level.</li><li>• All drawings to be read in conjunction with all other consultants drawings and specs.</li></ul></div></div><div><div><div>Scale</div><div>1:100</div></div><div><div>Size</div><div>A2</div></div><div><div>Drawn</div><div>--</div></div><div><div>Chk'd</div><div>JLL</div></div><div><div>Date</div><div>07/07/17</div></div></div><div><div>Status</div><div>PROPOSAL DRAWING</div></div><div><div>Job No.</div><div>1680</div></div><div><div>Drawing No.</div><div>AL61</div></div><div><div>Rev.</div><div>B</div></div></div></div><div><div>architects   historic building advisors   project managers   landscape &amp; urban designers</div></div></div>			