

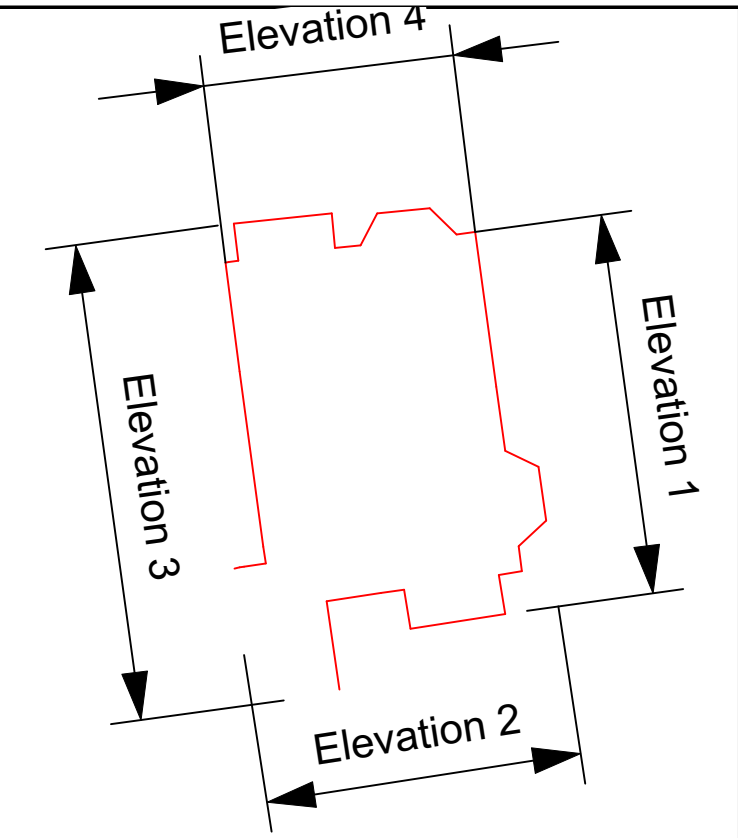
Datum 53.000m

Elevation 3



Datum 53.000m

Elevation 4



Topography Legend	Drawing Notes
Embankment Top	Embankment Bottom
Building Footprint	Building Hatch
Building Ridge/Eaves	Concrete
Contours	Ditch
Drainage	Fencing
Gates	Kerb Lines
Levels	Misc. Features
Misc. Text	Overhead/Overhang
Overhead Electric Line	Overhead Telecom Line
Road Markings	Service Cover
Staywire	Steps / Stairs / Slopes
Street Furniture	Surface Change
Survey Station	Tree Dimensions
Girth/Spread/Height	MB - Multiple Trunks/Stems
Vegetation	Vegetation Hatch
Walls / Columns	Top of Wall (Tow)
Waterline	Windows
C - Cell level	H - Head level

Leg	endPS
AB	Air Brick
ACU	Air Conditioning Unit
AV	Air Valve
A/R	Assumed Route
BB	Belisha Beacon
BO	Bollard
BX	Box
BS	Bus Stop Sign
BT	British Telecom Cover
CA	Camera
CE	Ceiling
CL	Cover Level
CSU	Ceiling Slopes Up
DPC	Damp Proof Course
DR	Drain
DH	Door Height
ER	Earth Rod
EC	Electricity Cover
EP	Electricity Pole
FH	Fire Hydrant
FL	Flood Light
GA	Gas Valve
GU	Gully
IC	Inspection Cover
IL	Invert Level
KI	Kerb Inlet
LP	Lamp Post
MH	Manhole/Marker Post
MK	Mooring
MO	No Pipe Visible
NPV	No Service Visible
NSV	Post Box
PB	Post
PO	Post & Rail
PM	Parking Meter
Private Sign	Rodding Eye
RP	Reflector Post
RS	Road Sign
RWP	Rainwater Pipe
SO	Soffit Level
SP	Sign Post
ST	Stop Tap
SV	Stop Valve
SVP	Soil Vent Pipe
TB	Telephone Box
TC	Tactile Paving
TH	Threshold Level
TM	Telephone Mast
TOB	Top of Beam
TOR	Top of Rafter
TP	Telegraph Pole
TL	Traffic Light
TV	Cable TV Cover
VP	Vent Pipe
WL	Water Level
WM	Water Meter
WO	Wash Out
UTL	Unable To Lift
USB	Underside of Beam
USR	Underside of Rafter

Precise Land Surveys Land & Measured Building Surveyors 395 Pickersleigh Road Malvern Worcestershire WR14 2QL Tel: 01684 577046 E-Mail: info@preciselandsurveys.co.uk www.preciselandsurveys.co.uk	
--	---

Drawing No.	Date	Revision
E_FL5175_E2	MAY 19	1
© Copyright Precise Land Surveys		
Drawing:- <b>ELEVATIONS</b>		Scale:- <b>1:50</b>
Project Title:- <b>The Wainhouse, Symonds Yat, Ross-On-Wye, HR9 6BN</b>		