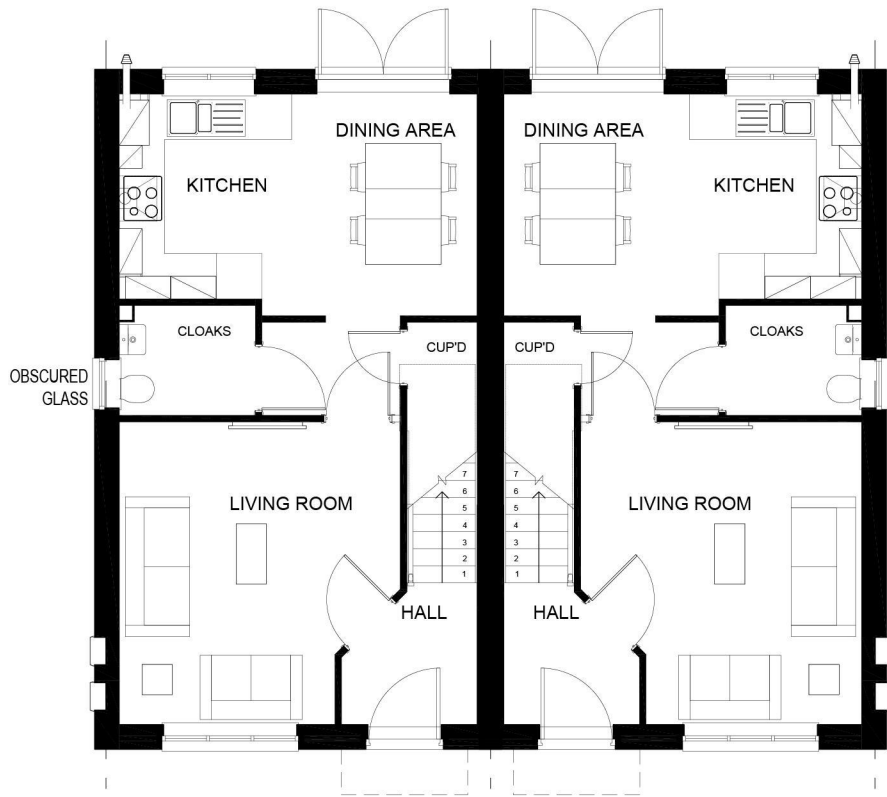


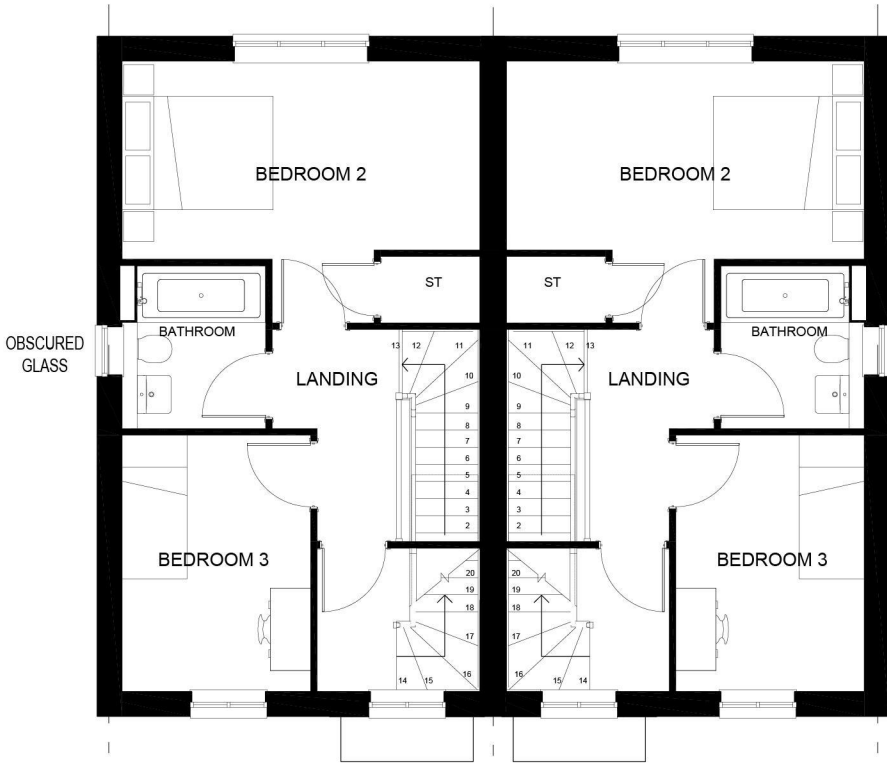
Notes:
The contractor must verify all dimensions on site before commencing any work.
on shop drawings, do not scale from this drawing
McBains Ltd copyright

BIM Transmittal Disclaimer
McBains Ltd makes no express or implied warranties with respect to the character, function, or capabilities of the data (inclusive of 3rd party data incorporated within), or the suitability of the data for any particular purpose beyond those originally intended by McBains Ltd. Please refer to our standard terms and conditions for further details.

NOTE:
ALL BATHROOMS & ENSUITE WINDOWS TO HAVE OBSCURED GLASS.
REFER TO EXTERNAL MATERIALS PLAN FOR SPECIFIC MATERIALS, WINDOWS COLOURS AND DOOR COLOURS



GROUND FLOOR PLAN



FIRST FLOOR PLAN



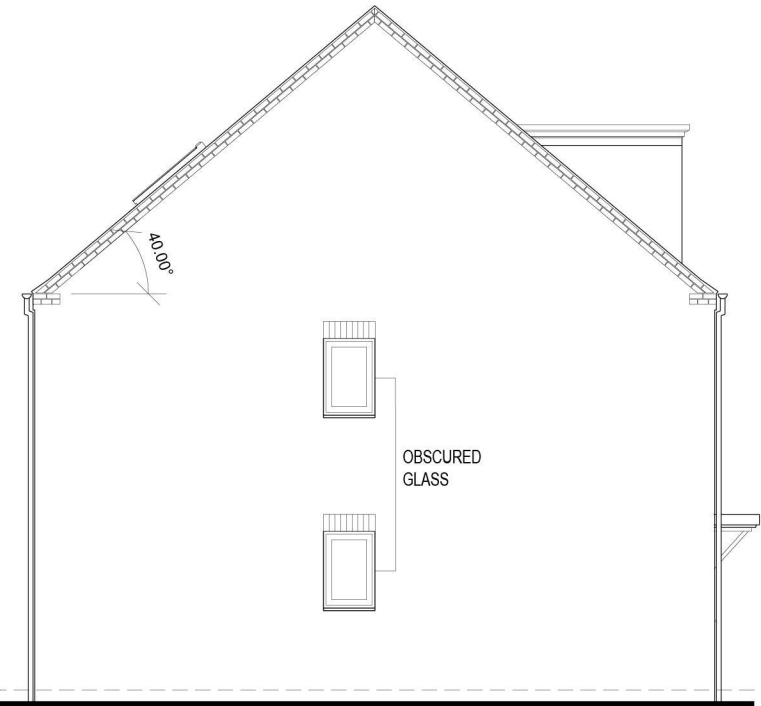
SECOND FLOOR PLAN



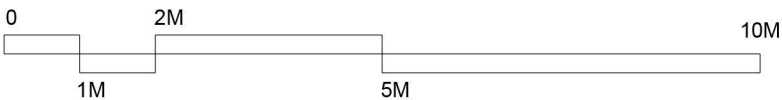
FRONT ELEVATION



REAR ELEVATION



SIDE ELEVATION



P2 Amended to suit comments 02-08-2022
P1 Issued for planning 11-02-2022

Revision	Amendment	Date
JP/VS	FC/SC	POR
Drawn by	Reviewed by	Approved by
60738	JUN 2021	1:100 @ A3
MCB Number	Date created	Scale @ A3

McBains

McBains Ltd
5th FL, 26 Finsbury Square London EC2A 1DS
+44 (0)20 7786 7900 mcbains.co.uk

Client
Vistry Group

Project
LAND AT LEADON WAY
LEDBURY

Drawing Title
HOUSETYPE PLANS & ELEVATIONS
X309 BEECH
PLOTS 20 as shown
PLOTS 19 handed

ARCHITECTURE

Drawing / Document Reference							Status
LLWVG - MCB - ZZ - ZZ - DR - A - 0110							D5 - P2
Project Idn	Originator	Zone	Level	Type	Discipline	Number	Suitability Revision