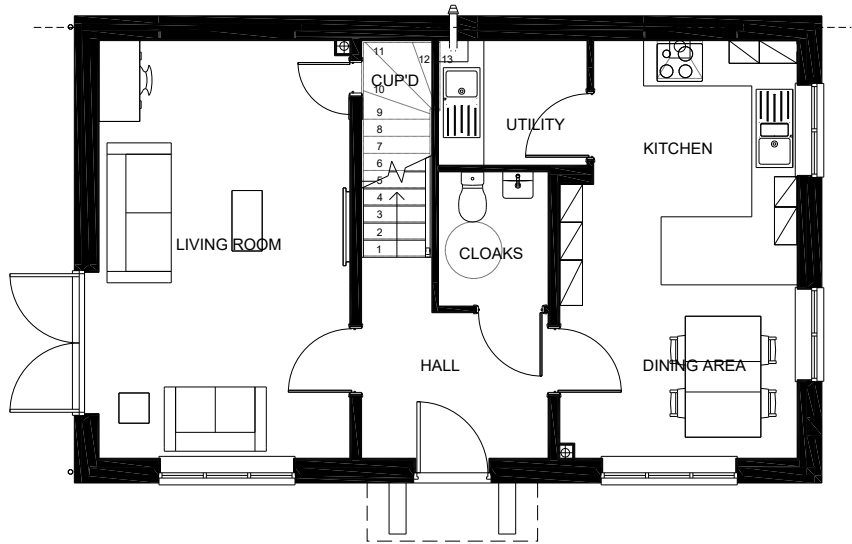


Notes:
The contractor must verify all dimensions on site before commencing any work on shop drawings, do not scale from this drawing
McBains Ltd copyright

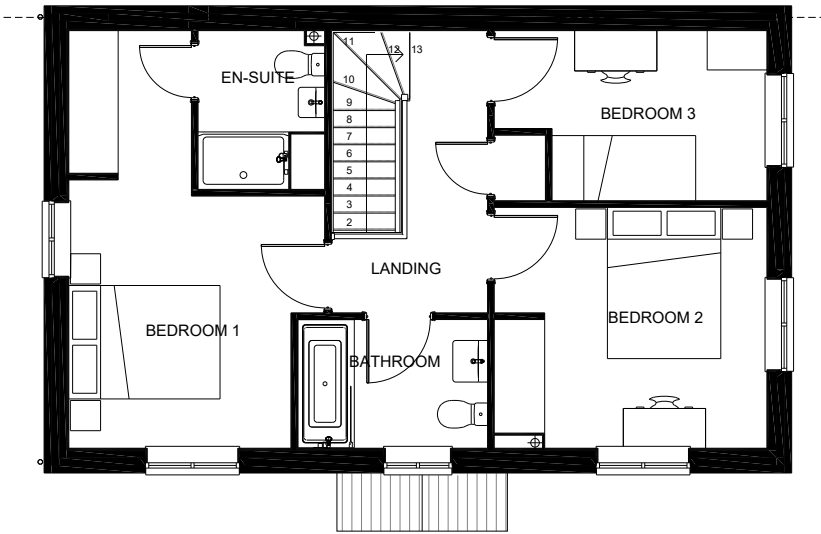
BIM Transmittal Disclaimer
McBains Ltd makes no express or implied warranties with respect to the character, function, or capabilities of the data (inclusive of 3rd party data incorporated within), or the suitability of the data for any particular purpose beyond those originally intended by McBains Ltd. Please refer to our standard terms and conditions for further details.

NOTE:
ALL BATHROOMS & ENSUITE WINDOWS TO HAVE OBSCURED GLASS.

REFER TO EXTERNAL MATERIALS PLAN
FOR SPECIFIC MATERIALS, WINDOWS
COLOURS AND DOOR COLOURS



GROUND FLOOR PLAN



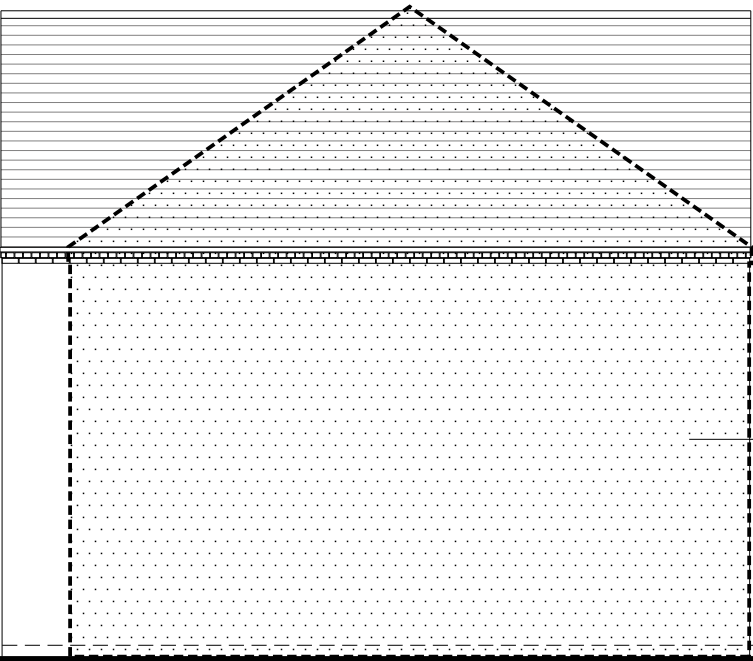
FIRST FLOOR PLAN



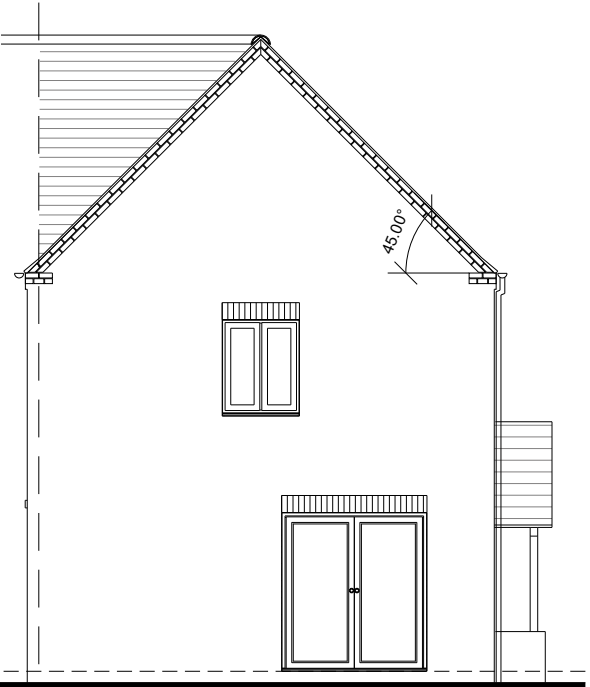
RIGHT ELEVATION



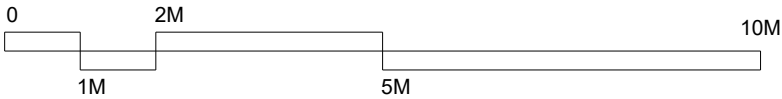
FRONT ELEVATION



REAR ELEVATION/ SECTION



LEFT ELEVATION



P1 Issued for planning 11-02-2022

Revision	Amendment	Date
JP/VS	FC/SC	POR
Drawn by	Reviewed by	Approved by
60738	JUN 2021	1:100 @ A3
MCB Number	Date created	Scale @ A3

McBains

McBains Ltd
5th Fl, 26 Finsbury Square London EC2A 1DS
+44 (0)20 7786 7900
mcbains.co.uk

Client
Vistry Group

Project
LAND AT LEADON WAY
LEDBURY

Drawing Title
HOUSETYPE PLANS & ELEVATIONS
X307 SPRUCE
PLOTS 10,32 as shown
PLOTS 8,11,81,128 handed

ARCHITECTURE

Drawing / Document Reference	Status
LLWVG - MCB - ZZ - ZZ - DR - A - 0112	D5 - P1
Project Idem Originator Zone Level Type Discipline Number	Suitability Revision