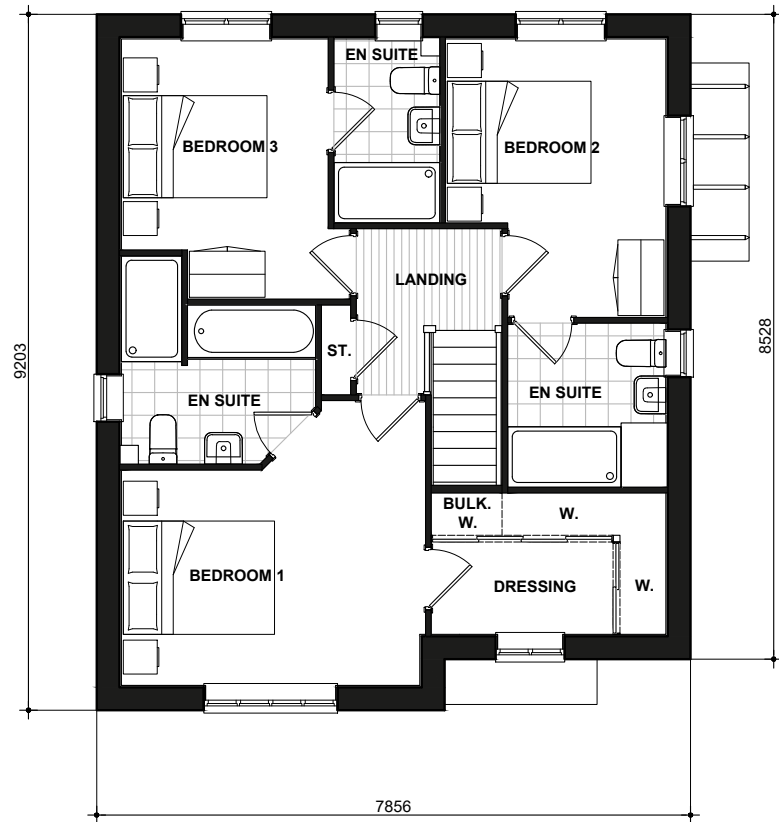


GROUND FLOOR PLAN



FIRST FLOOR PLAN

National Space Standards		
NSS.3B4P	Actual Area	NSS Requirement
Ground Floor Plan	60.82m²	
First Floor Plan	59.37m²	
Total floor area m²	120.19m²	84.00m²
Total floor area ft²	1294ft²	904ft²
Bedroom 1	12.99m²	11.5m²
Bedroom 2	9.71m²	7.5m²
Bedroom 3	9.12m²	7.5m²
Store Stairs	0.95m²	
Store Hall	1.03m²	
Store Landing	0.46m²	
Store Bedroom 1	1.82m²	
Built in store total	4.25m²	2.5m²

Worsley

308.PL-05

DATE: APR 2022
SCALE: 1:100 @ A3

REV:

DRAWN: MJE
CHECKED: GPM

121.81m²
1311ft²

