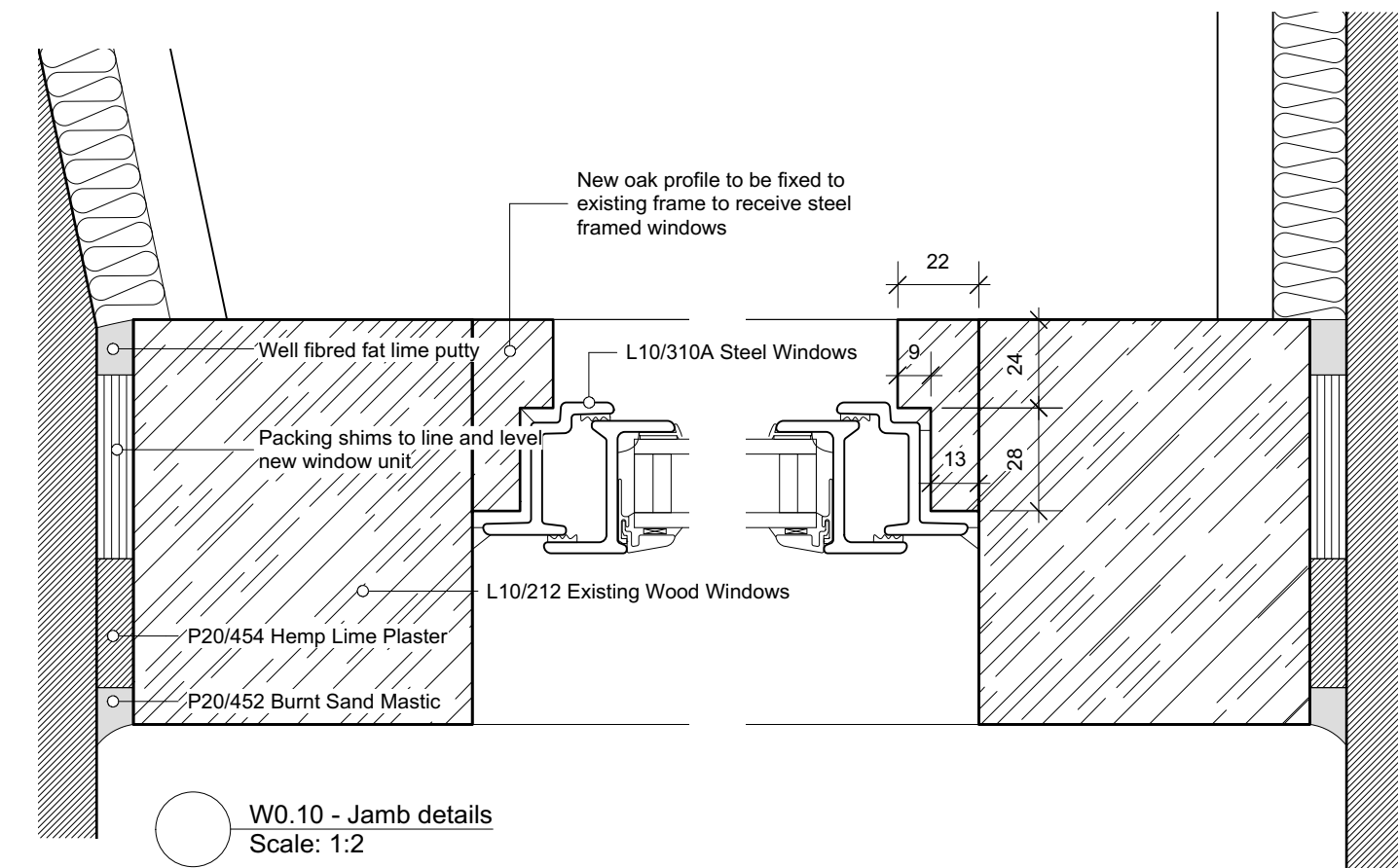


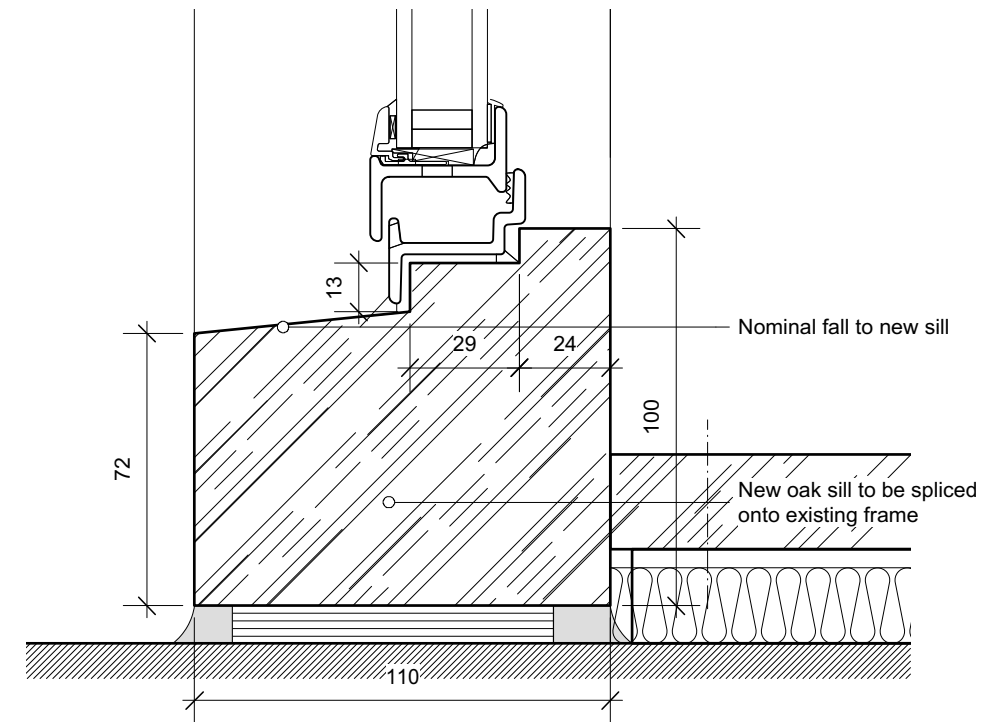
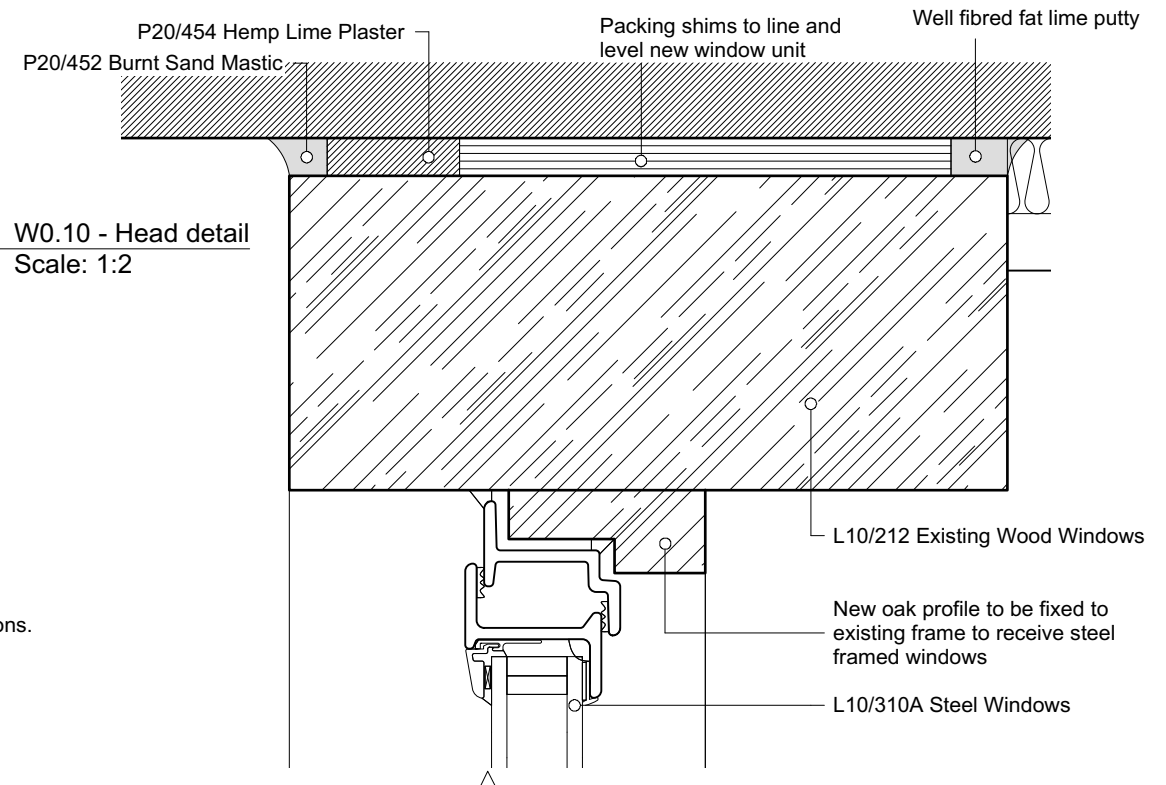
W0.10 External elevation
Scale: 1:10

Existing oak frame to be repaired and adapted to receive steel frame units. The majority of repairs to be spliced timber which will be angle cut so that if any water gets into the repair it is directed away from the building. Sensitive repairs to retain as much of the sound timber fabric and historic detailing as possible. All repair work directed towards the rear of the frame where achievable and in accordance with Historic England recommendations. All new joints a peg details to match existing.



W0.10 - Jamb details
Scale: 1:2

W0.10 - Head detail
Scale: 1:2



W0.10 - Sill detail
Scale: 1:2

Rural Office for Architecture

Tel +44 (0) 1559 505008
www.ruralofficeforarchitecture.co.uk

14 King Street, Carmarthen, SA31 1BH

revisions	date	revision notes	general notes
A	14.12.2018	Existing frames reset behind new	
C1	19.02.2019	Issued for information	
C2	19.03.2019	Frames updated following meeting on site	
C3	29.03.2019	Details altered to suit HCC officers requirements	

project
Lower Ponthendre, Longtown,
Herefordshire, HR2 0NY

client
Tif Hunter

drawing title
Proposed window W0.10 (Fixed unit)

drawing status
INFORMATION

scale
1:2 & 1:10 @ A3

job no.
095

date
12.11.18

drawing no.
5-3034

drawn by
GS

checked by
PR
revision
C3