

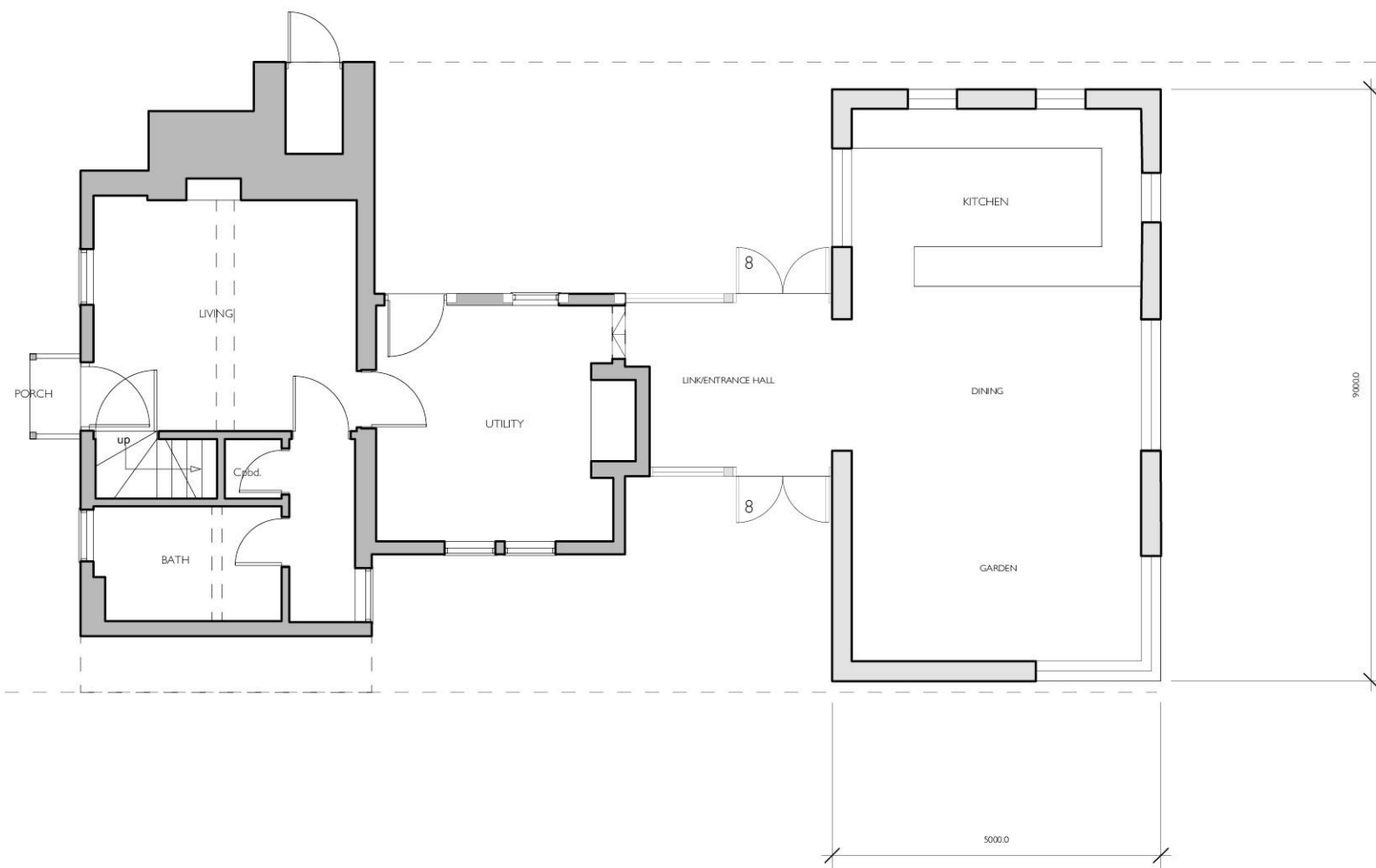
Key to Materials

- 1 Exposed black painted structural timber framing
- 2 Brick
- 3 Natural stone
- 4 Render
- 5 Slate roof
- 6 Painted timber windows and doors
- 7 Black stained vertical timber cladding
- 8 Aluminium/timber hybrid windows
- 9 Galvanised steel rainwater goods
- 10 Steel profiled sheet roofing (Corten)
- 11 Woodburner flue
- 12 Single ply roofing or lead?
- 13 Black stained timber shutters

Revisions

A 26.10.20

Revised in light of Comments
from Planning & Conservation



Option 2 26.10.20

Proposed Extension
2 Sheepwash Cottages Knill
Side (North West) Elevation as proposed
Drawing no. 99720.P17A
Scale 1:100 at A3
October 2020



warren benbow architects

21-22 Mill Street Kington
Herefordshire HR5 3AL

01544 239 136

www.warrenbenbow.com
mail@warrenbenbow.co.uk